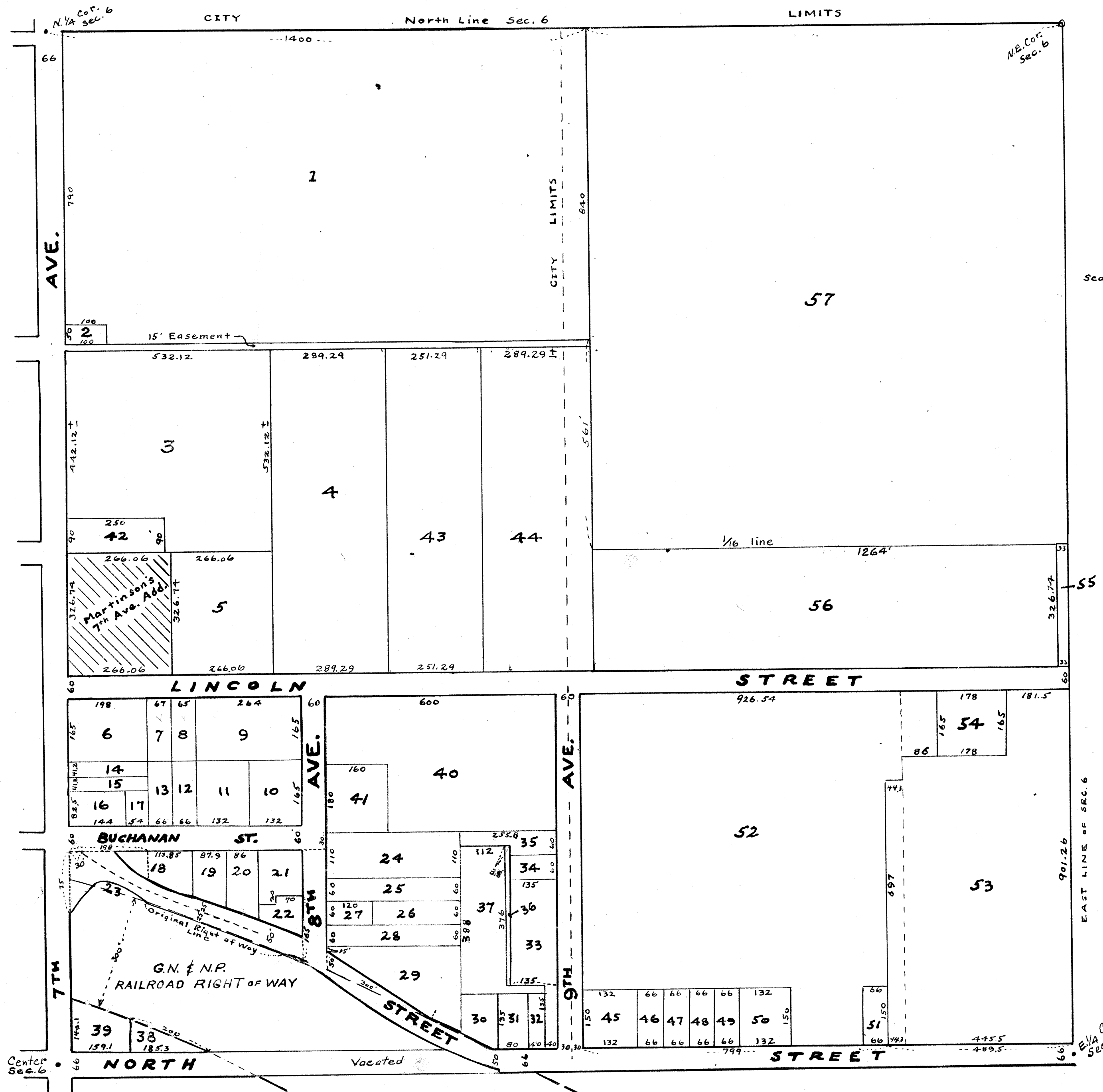


SECOND REVISION AUDITOR'S SUBDIVISION NUMBER 9

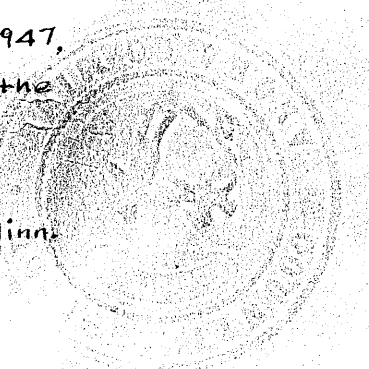


Scale: 1 inch = 200 feet

I, Kenneth W. Campbell, County Auditor of Anoka County, Minnesota, hereby certify that pursuant to Minnesota Statutes of 1923, Section 2219 and as amended by Chapter 494, Laws of 1947, I have caused the annexed plat, as described in the Engineer's Certificate, to be prepared and the same to be known as "SECOND REVISION of AUDITOR'S SUBDIVISION NUMBER 9,"

Kenneth W. Campbell
County Auditor, Anoka County, Minn.
R. Peterson, Deputy

Dated 3-31-52



I hereby certify that in accordance with Section 2219, Chapter II, General Statutes of 1923 and as amended by Chapter 494 Laws of 1947 and in accordance with the order of the County Auditor of Anoka County, Minnesota, made pursuant to the resolution of the Board of County Commissioners for said Anoka County, Dated Sept. 4-51 I have plotted the following described land in said Anoka County, to-wit: Northeast one-quarter (N.E. 1/4) of Section six (6) Township 31, Range 24, except tract plotted as Martinson's Seventh Avenue Addition and known as Revised Auditor Subdivision No. 9; that the annexed plat is a correct delineation of said platting and is to be known as "SECOND REVISION, AUDITOR'S SUBDIVISION NUMBER 9" and distances are shown in feet and decimals of a foot and conform to those shown on the original Subdivision and to those stated in the instruments of conveyance.

Dated 3-31-52

R. Peterson
Registered Engineer No. 378.

11498

1149880
OFFICE OF REGISTER OF DEEDS,
STATE OF MINNESOTA, COUNTY OF ANOKA

I hereby certify that the within instrument was filed in this office for record on the 1st day of APR 1 1952 A. D. 1952 at 2:30 o'clock P. M., and was duly recorded in book 11 of Plat page 26.

Caroline Wisner
Register of Deeds

OFFICE OF REGISTRAR OF TITLES
STATE OF MINNESOTA
COUNTY OF ANOKA

I hereby certify that the within instrument was filed in this office on the 1st day of APR 1 1952 day of APR 1 1952 at 3:30 o'clock P. M.

James Wisner
Registrar of Titles

DEPUTY REGISTRAR OF TITLES