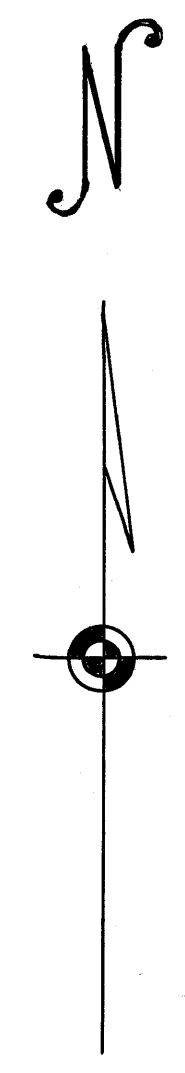


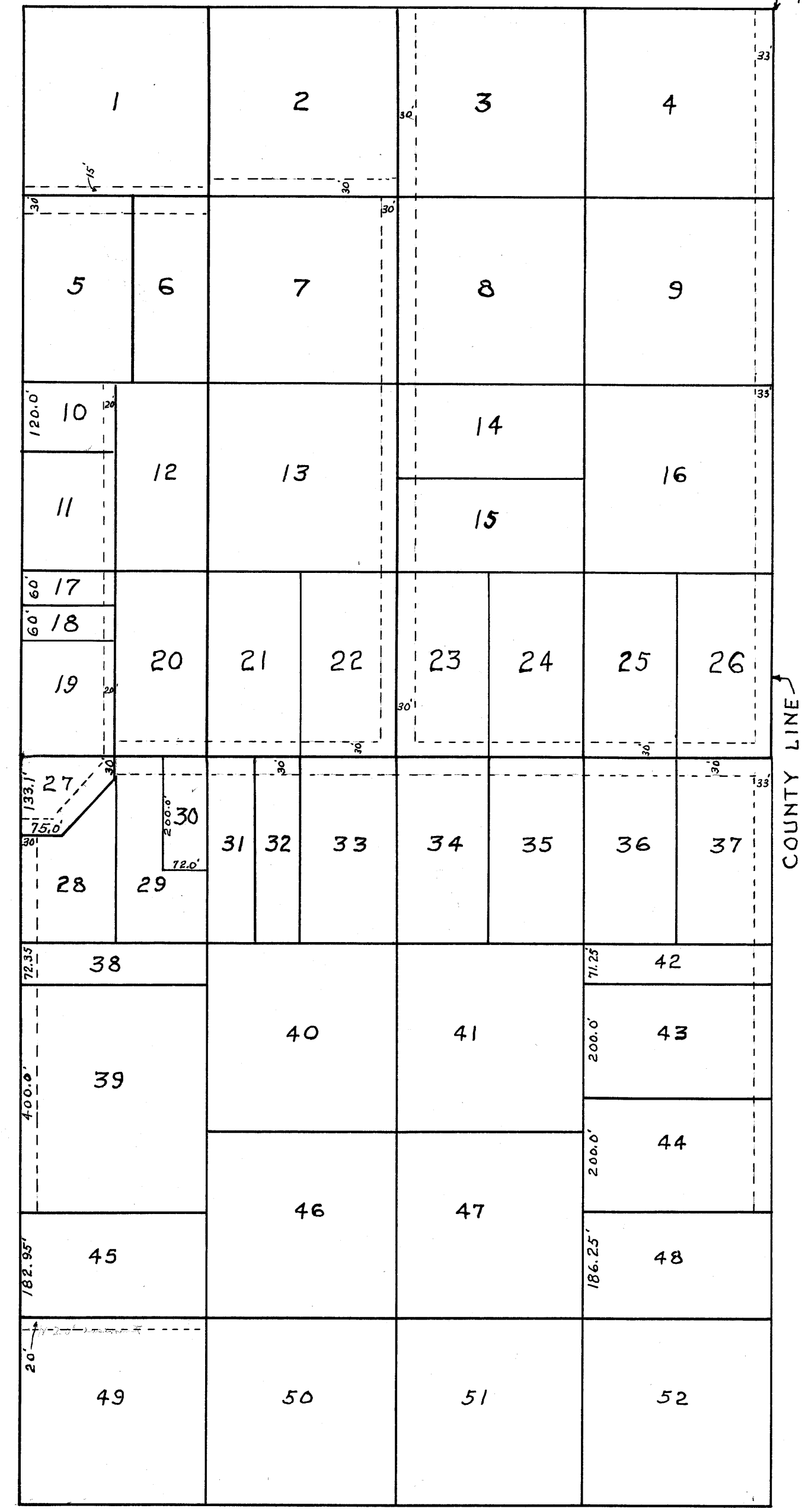
# AUDITOR'S SUBDIVISION No. 92

SCALE 1" = 200'

STATE OF MINNESOTA  
 COUNTY OF ANOKA  
 REC'D OF COUNTY AUDITOR  
 April 1949  
 4 of Plate  
 28  
*Eva Brandell*  
 Registrar of Deeds



N.E. Corner of Sec. 24, T 30, R 24.



I hereby certify that in accordance with Section 2219, Chapter 11, General Statutes of 1923 and as amended by Chapter 494 Laws of 1947 and in accordance with the order of the County Auditor of Anoka County, Minnesota and made pursuant to the resolution of the Board of County Commissioners for Anoka County, Minnesota dated Dec. 6, 1948, I have platted the following described land in the County of Anoka, State of Minnesota to-wit: The Northeast quarter of the Northeast quarter (N.E. 1/4 of N.E. 1/4) and the Southeast quarter of the Northeast quarter (S.E. 1/4 of N.E. 1/4) of Section twenty-four, (24) Township thirty, (30) Range twenty-four (24). That the Plat on this sheet is a correct delineation of said platting and is to be known as AUDITOR'S SUBDIVISION No. 92 and that all distances shown are in feet and decimals of a foot and the measurements shown hereon conform to those stated in the instruments of conveyance describing the tracts hereon shown.

March 9-1949  
Dated

*R. Sturtevant*  
 Registered Engineer No. 378

I, E. A. Carlson, County Auditor of Anoka County, Minnesota hereby certify that pursuant to Minnesota Statutes of 1923 Section 2219 Chapter 11 and as amended by Chapter 494 Laws of 1947, I have caused the foregoing plat, as described in the Engineers Certificate, to be prepared and the same to be known as AUDITOR'S SUBDIVISION No. 92.

March 9, 1949  
Dated.

*E. A. Carlson*  
 County Auditor Anoka County Minn.  
 by *J. Krinner*, Register