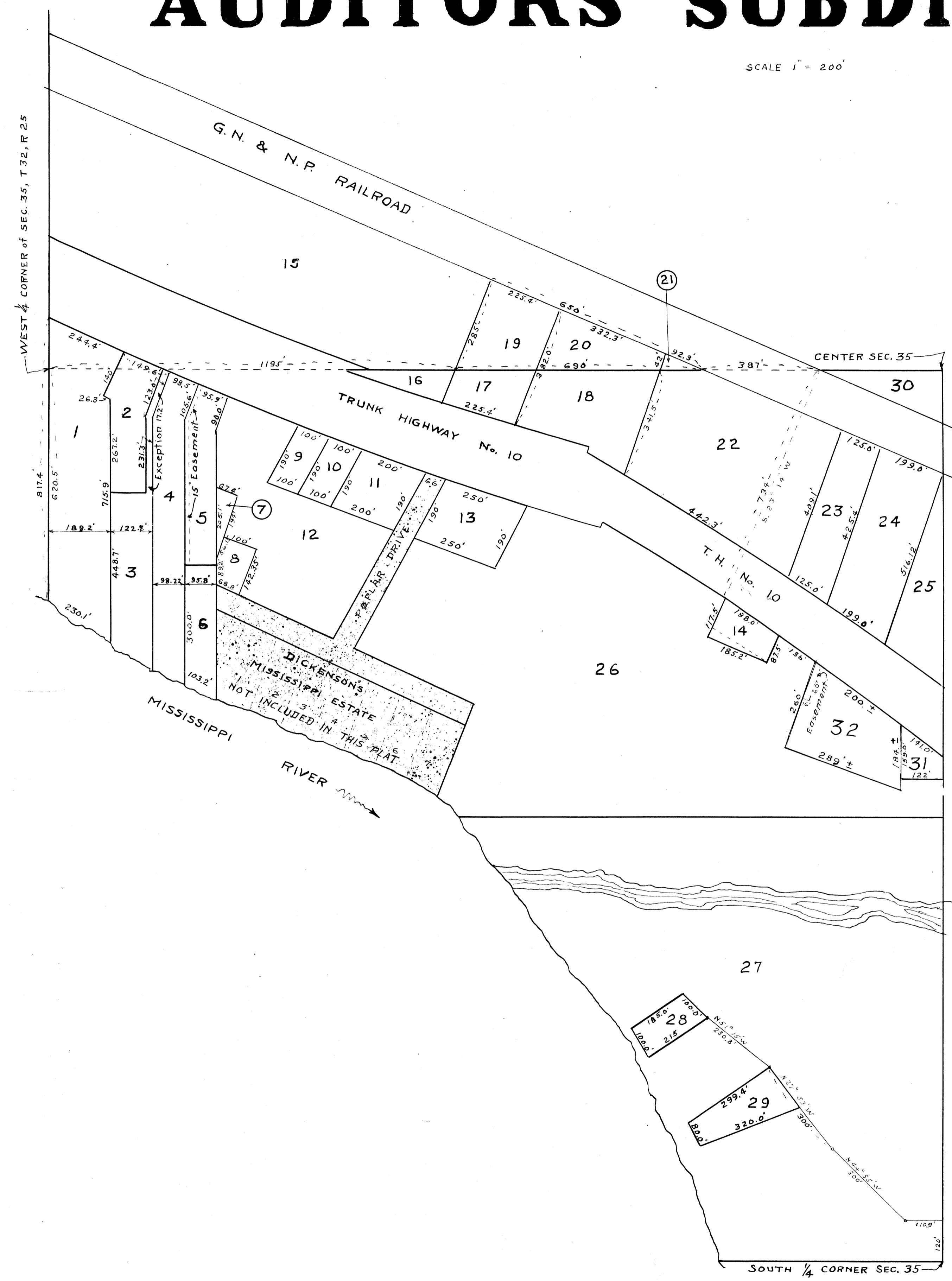


(Original)

AUDITOR'S SUBDIVISION No. 96

SCALE 1" = 200'



I hereby certify that in accordance with Section 2219, Chapter 11, General Statutes of 1923 and as amended by Chapter 494 Laws of 1947 and in accordance with the order of the County Auditor of Anoka County, Minnesota I have platted the following described land in Anoka County, Minnesota to-wit: All of the land now included in Auditor's Subdivision No. 29 and all that part of the N.W. 1/4 of Section 35, T 32, R 25 lying south of the G.N. and N.P. Railroad Right of way. All distances shown on this Plat are in feet and decimals of a foot and all measurements shown hereon conform to those stated in the instruments of conveyance or as shown on the original Plat of Auditor's Subdivision No. 29 now on file and of record in the office of the Register of deeds for Anoka County Minnesota. This Plat is to be known as Auditor's SUBDIVISION No. 96.

October 11, 1950
dated

R. S. Streetly
Registered Engineer No. 378

I, E.A. Carlson County Auditor of Anoka County Minnesota hereby certify that pursuant to Minnesota Statutes of 1923, Section 2219, Chapter 11 and as amended by chapter 494 laws of 1947 I have caused the foregoing plat, as described in the Engineers Certificate, to be prepared and the same to be known as AUDITOR'S SUBDIVISION No. 96.

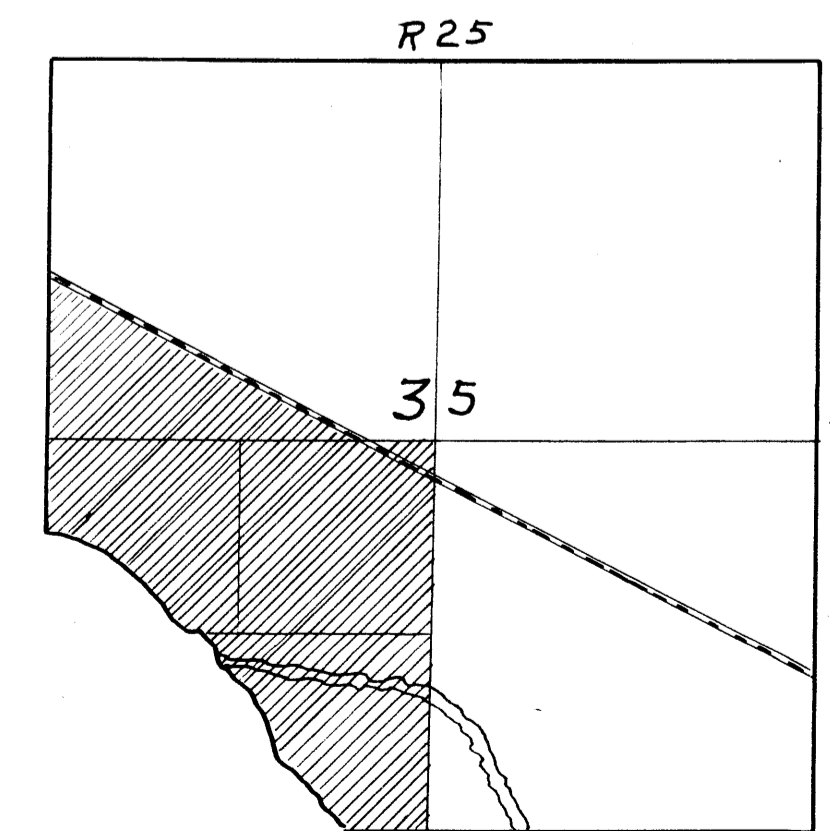
October 11, 1950
dated

E. A. Carlson
County Auditor Anoka Co. Minn.
By *D. Canastad*, Deputy



8937

Office of REGISTRAR OF TITLES
STATE OF MINNESOTA
COUNTY OF ANOKA
I hereby certify that the within instrument was filed in this office for record on the day of NOV 15 1950 A. D. 1950 at 4 o'clock P. M., and was duly recorded in book 137231 page 4
By *Geo. Brandell* Deputy Registrar of Titles



137231
OFFICE OF REGISTER OF DEEDS,
STATE OF MINNESOTA, COUNTY OF ANOKA
I hereby certify that the within instrument was filed in this office for record on the day of NOV 15 1950 A. D. 1950 at 4 o'clock P. M., and was duly recorded in book 137231 page 4
By *Eva Brandell* Register of Deeds
By *Geo. Brandell* Deputy