

B AND D ESTATES SECOND ADDITION

KNOW ALL PERSONS BY THESE PRESENTS: That Povlitzki Properties, LLP, a Minnesota limited liability partnership, owner of the following described property:

Outlots A and B, B AND D ESTATES FIRST ADDITION, Anoka County, Minnesota.

Has caused the same to be surveyed and platted as B AND D ESTATES SECOND ADDITION and does hereby dedicate to the public for public use the public way and the drainage and utility easements as shown on this plat.

In witness whereof said Povlitzki Properties, LLP, a Minnesota limited liability partnership, has caused these presents to be signed by its proper partner this 20th day of April, 2016.

POVLITZKI PROPERTIES, LLP

Brad Povlitzki
Brad Povlitzki, Partner

STATE OF Minnesota
COUNTY OF Anoka

This instrument was acknowledged before me this 20th day of April, 2016 by Brad Povlitzki, Partner of Povlitzki Properties, LLP, a Minnesota limited liability partnership, on behalf of the partnership.

Nicole A. Johnson
Nicole A. Johnson
Notary Public, Anoka County, Minnesota
My Commission Expires January 31, 2020

I, Jason E. Rud do hereby certify that this plat was prepared by me or under my direct supervision; that I am a duly Licensed Land Surveyor in the State of Minnesota; that this plat is a correct representation of the boundary survey; that all mathematical data and labels are correctly designated on this plat; that all monuments depicted on this plat have been, or will be correctly set within one year; that all water boundaries and wet lands, as defined in Minnesota Statutes, Section 505.01, Subd. 3, as of the date of this certificate are shown and labeled on this plat; and all public ways are shown and labeled on this plat.

Dated this 19th day of APRIL, 2016.

Jason E. Rud
Jason E. Rud, Licensed Land Surveyor
Minnesota License No. 41578

STATE OF MINNESOTA
COUNTY OF Anoka

This instrument was acknowledged before me this 19th day of April, 2016 by Jason E. Rud.

Nicole A. Johnson
Nicole A. Johnson
Notary Public, Anoka County, Minnesota
My Commission Expires January 31, 2020

CITY COUNCIL, CITY OF ANDOVER, MINNESOTA

This plat of B AND D ESTATES SECOND ADDITION was approved and accepted by the City Council of the City of Andover, Minnesota at a regular meeting thereof held this 5th day of April, 2016, and said plat is in compliance with the provisions of Minnesota Statutes, Section 505.03, Subd. 2.

City Council, City of Andover, Minnesota

By Julie Orude Mayor
By Ron Clerk

COUNTY SURVEYOR

I hereby certify that in accordance with Minnesota Statutes, Section 505.021, Subd. 11, this plat has been reviewed and approved this 24th day of May, 2016.

Larry O. Hoium by Charles F. Litzgen, Deputy
Larry O. Hoium
Anoka County Surveyor

COUNTY AUDITOR/TREASURER

Pursuant to Minnesota Statutes, Section 505.021, Subd. 9, taxes payable in the year 2016 on the land hereinbefore described have been paid. Also, pursuant to Minnesota Statutes, Section 272.12, there are no delinquent taxes and transfer entered this 2nd day of May, 2016.

Jonell M. Sawyer
Property Tax Administrator
By J.M. Sawyer Deputy

COUNTY RECORDER/REGISTRAR OF TITLES
COUNTY OF ANOKA, STATE OF MINNESOTA

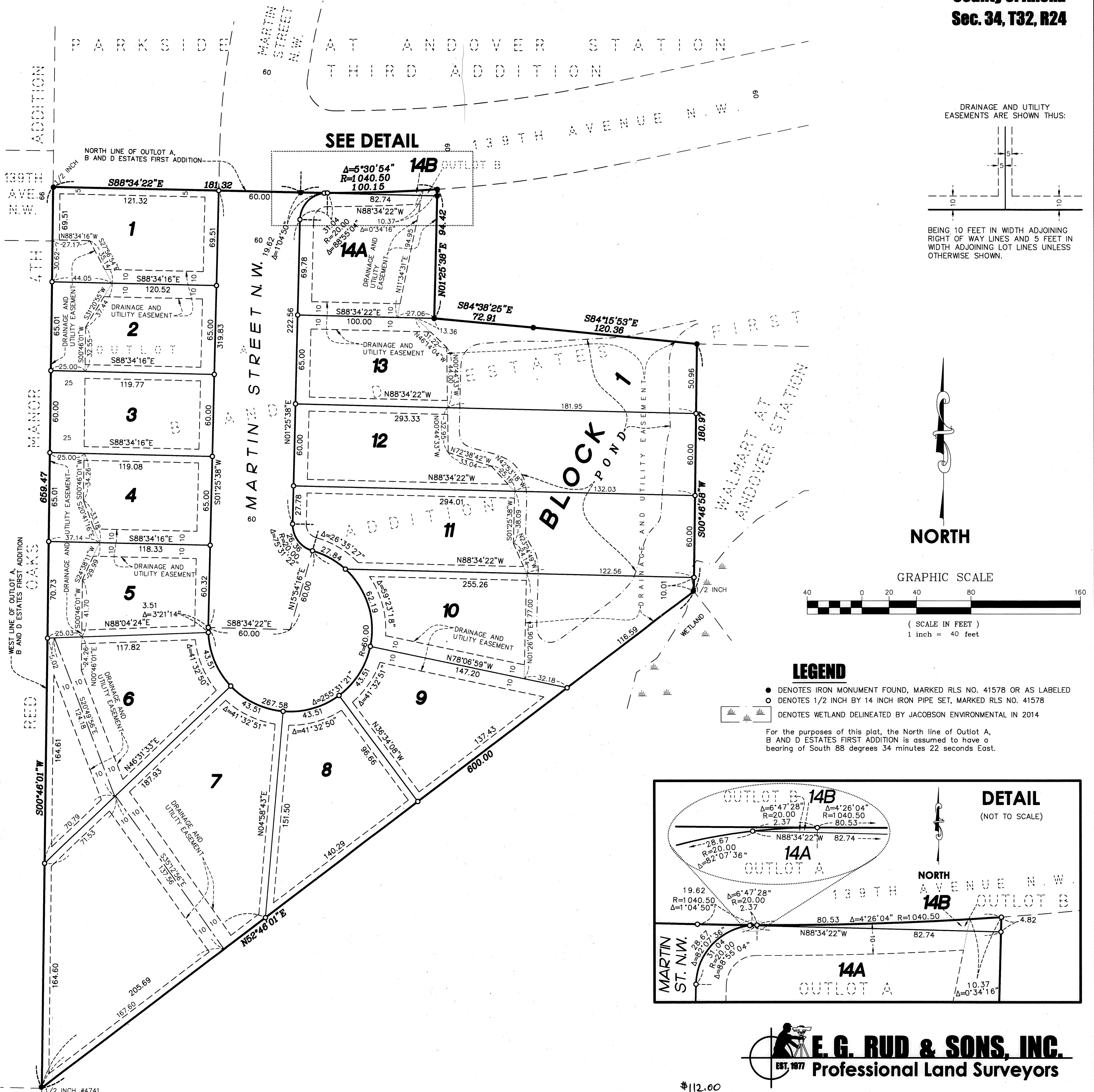
I hereby certify that this plat of B AND D ESTATES SECOND ADDITION was filed in the office of the County Recorder/Registrar of Titles for public record on this 2nd day of May, 2016 at 11:17 o'clock A.M. and was duly recorded in Book 79 Page 7, as Document Number 538942.001

Jonell M. Sawyer
County Recorder/Registrar of Titles
By J.M. Sawyer Deputy

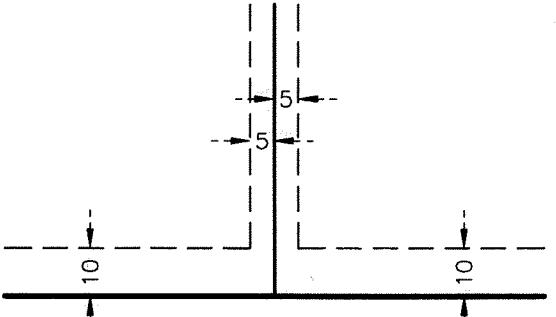
COUNTY RECORDER/REGISTRAR OF TITLES
COUNTY OF ANOKA, STATE OF MINNESOTA

I hereby certify that this plat of B AND D ESTATES SECOND ADDITION was filed in the office of the County Recorder/Registrar of Titles for public record on this 2nd day of May, 2016 at 11:18 o'clock A.M. and was duly recorded in Book 79 Page 7, as Document Number 2137897.001

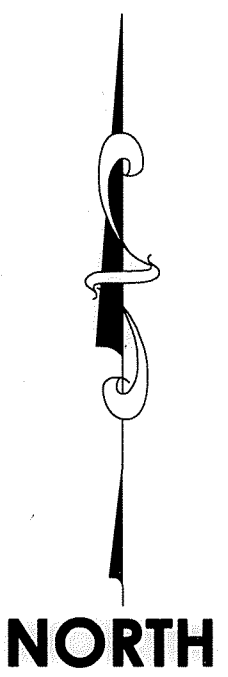
Jonell M. Sawyer
County Recorder/Registrar of Titles
By J.M. Sawyer Deputy



DRAINAGE AND UTILITY EASEMENTS ARE SHOWN THUS:



BEING 10 FEET IN WIDTH ADJOINING RIGHT OF WAY LINES AND 5 FEET IN WIDTH ADJOINING LOT LINES UNLESS OTHERWISE SHOWN.



GRAPHIC SCALE



(SCALE IN FEET)
1 inch = 40 feet

LEGEND

- DENOTES IRON MONUMENT FOUND, MARKED RLS NO. 41578 OR AS LABELED
- DENOTES 1/2 INCH BY 14 INCH IRON PIPE SET, MARKED RLS NO. 41578
- ▭ DENOTES WETLAND DELINEATED BY JACOBSON ENVIRONMENTAL IN 2014

For the purposes of this plat, the North line of Outlot A, B AND D ESTATES FIRST ADDITION is assumed to have a bearing of South 88 degrees 34 minutes 22 seconds East.

