

BALL ROAD 2ND ADDITION

CITY OF BLAINE
COUNTY OF ANOKA
SEC. 24, T. 31, R. 23

KNOW ALL PERSONS BY THESE PRESENTS: That Blaine Ball Road GW, LLC, a Minnesota limited liability company, owner of the following described property:

Outlot B, BALL ROAD ADDITION, Anoka County, Minnesota
Abstract Property
AND
Outlot C, BALL ROAD ADDITION, Anoka County, Minnesota
Torrens Property

Has caused the same to be surveyed and platted as BALL ROAD 2ND ADDITION and does hereby dedicate the drainage and utility easements as shown on this plat.

In witness whereof said Blaine Ball Road GW, LLC, a Minnesota limited liability company, has caused these presents to be signed by its proper officer this 30 day of July, 2015.

BLAINE BALL ROAD GW, LLC

Vincent J. Driessen

By: Vincent J. Driessen, as Chief Manager

STATE OF MINNESOTA
COUNTY OF Hennepin

This instrument was acknowledged before me this 30th day of July, 2015, by Vincent J. Driessen, as Chief Manager of Blaine Ball Road GW, LLC, a Minnesota limited liability company.

Ashley Kemplin-Cramm
Notary Public, Anoka County, Minnesota
My Commission Expires 1-31-18

SURVEYOR'S CERTIFICATE

I Rick M. Blom do hereby certify that this plat was prepared by me or under my direct supervision; that I am a duly Licensed Land Surveyor in the State of Minnesota; that this plat is a correct representation of the boundary survey; that all mathematical data and labels are correctly designated on this plat; that all monuments depicted on this plat have been, or will be correctly set within one year; that all water boundaries and wet lands, as defined in Minnesota Statutes, Section 505.01, Subd. 3, as of the date of this certificate are shown and labeled on this plat; and all public ways are shown and labeled on this plat.

Dated this 28th day of July, 2015.

Rick M. Blom
Rick M. Blom, Licensed Land Surveyor, Minnesota License No. 21729

STATE OF MINNESOTA
COUNTY OF Hennepin

This instrument was acknowledged before me this 28th day of July, 2015, by Rick M. Blom.

Julie Sabacky
Notary Public, Hennepin County, Minnesota
My Commission Expires January 31, 2019

CITY COUNCIL CITY OF BLAINE, MINNESOTA

This plat of BALL ROAD 2ND ADDITION was approved and accepted by the City Council of the City of Blaine, Minnesota at a regular meeting thereof held this 18 day of June, 2015, and said plat is in compliance with the provisions of Minnesota Statutes, Section 505.03, Subd. 2.

City Council, City of Blaine, Minnesota
By: Tom Ryan, Mayor By: Colleen Jensen, Clerk

ANOKA COUNTY SURVEYOR

I hereby certify that in accordance with Minnesota Statutes, Section 505.021, Subd. 11, this plat has been reviewed and approved this 3rd day of August, 2015.

By: Larry D. Hoium by Charles F. Lutzen
Larry D. Hoium, Anoka County Surveyor

COUNTY AUDITOR/TREASURER

Pursuant to Minnesota Statutes, Section 505.021, Subd. 9, taxes payable in the year 2015 on the land hereinbefore described have been paid. Also, pursuant to Minnesota Statutes, Section 272.12, there are no delinquent taxes and transfer entered this 3rd day of August, 2015.

Janel M. Sawyer
Property Tax Administrator

By: J.M. Anschutz, Deputy

COUNTY RECORDER / REGISTRAR OF TITLES COUNTY OF ANOKA, STATE OF MINNESOTA

I hereby certify that this plat of BALL ROAD 2ND ADDITION was filed in the office of the County Recorder/Registrar of Titles for public record on this 3rd day of August, 2015, at 1:41 o'clock P.M. and was duly recorded in Book 42, Page 22, as Document Number 532433.007.

Janel M. Sawyer
County Recorder/Registrar of Titles

By: J.M. Anschutz, Deputy

COUNTY RECORDER / REGISTRAR OF TITLES COUNTY OF ANOKA, STATE OF MINNESOTA

I hereby certify that this plat of BALL ROAD 2ND ADDITION was filed in the office of the County Recorder/Registrar of Titles for public record on this 3rd day of August, 2015, at 1:41 o'clock P.M. and was duly recorded in Book 78, Page 27, as Document Number 214472.007.

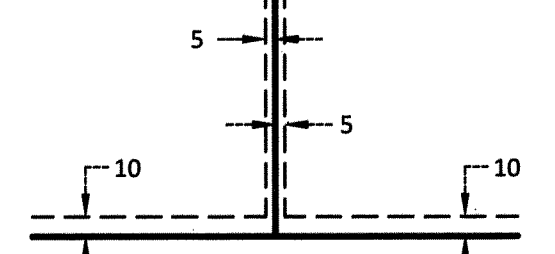
Janel M. Sawyer
County Recorder/Registrar of Titles

By: J.M. Anschutz, Deputy

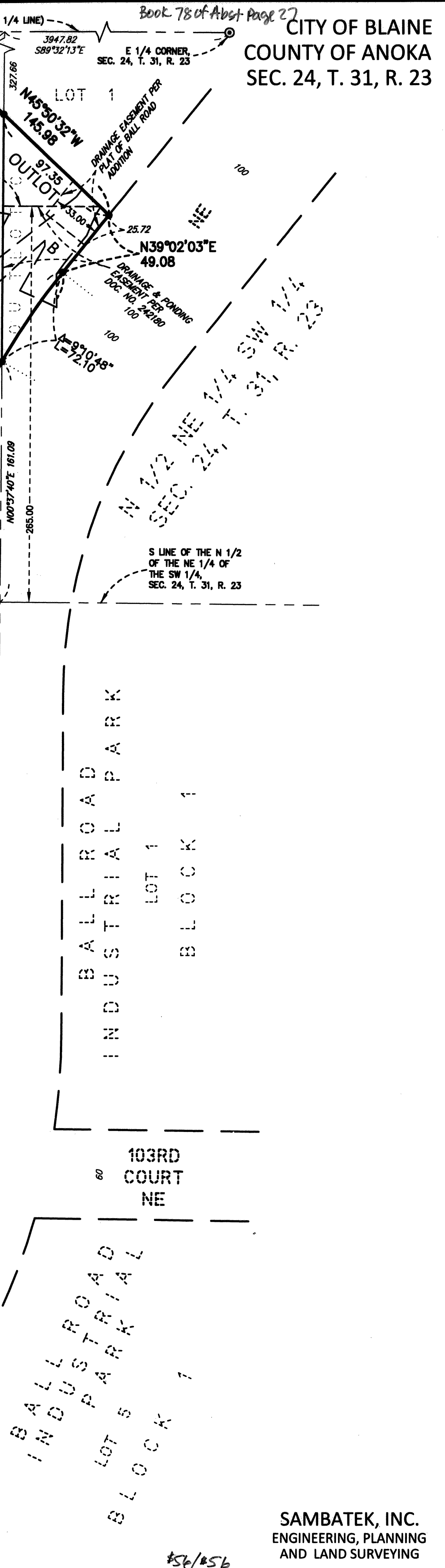
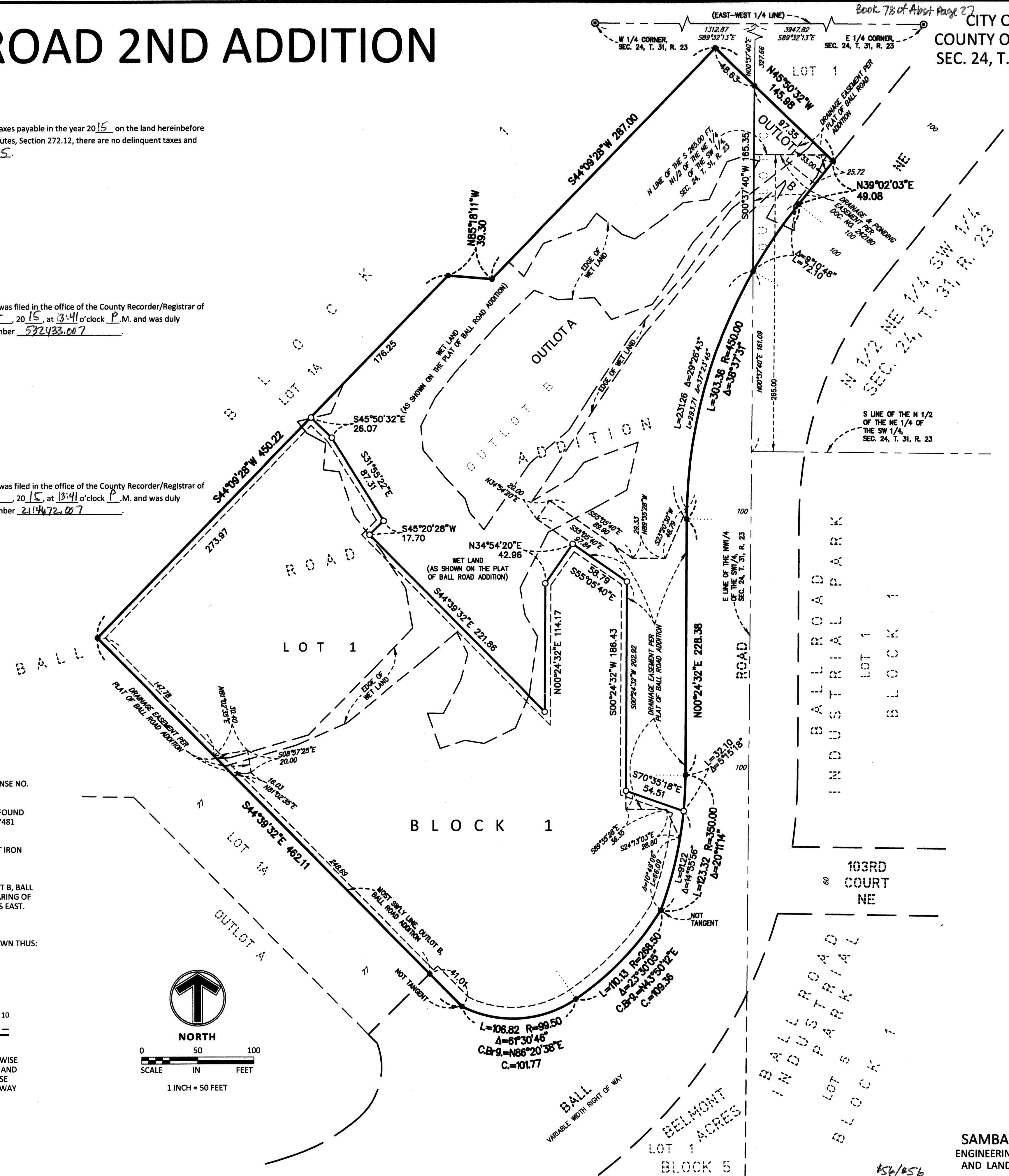
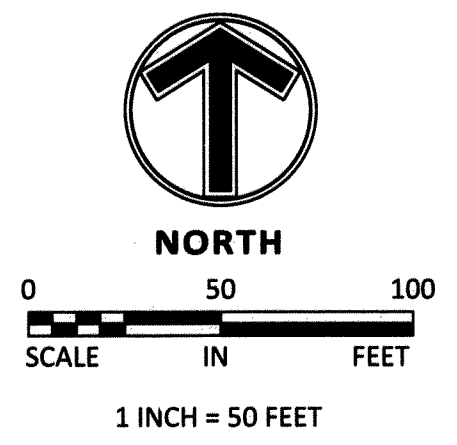
- DENOTES 1/2 INCH BY 14 INCH IRON MONUMENT SET AND MARKED BY LICENSE NO. 21729.
- DENOTES 1/2 INCH IRON MONUMENT FOUND AND MARKED BY REGISTRATION NO. 47481 UNLESS OTHERWISE SHOWN.
- ⊙ DENOTES FOUND ANOKA COUNTY CAST IRON MONUMENT

THE MOST SOUTHWESTERLY LINE OF OUTLOT B, BALL ROAD ADDITION IS ASSUMED TO HAVE A BEARING OF SOUTH 44 DEGREES 39 MINUTES 32 SECONDS EAST.

DRAINAGE AND UTILITY EASEMENTS ARE SHOWN THUS: (NOT TO SCALE)



BEING 5 FEET IN WIDTH, UNLESS OTHERWISE INDICATED, AND ADJOINING LOT LINES, AND 10 FEET IN WIDTH, UNLESS OTHERWISE INDICATED, AND ADJOINING RIGHT-OF-WAY LINES, AS SHOWN ON THE PLAT.



SAMBATEK, INC.
ENGINEERING, PLANNING
AND LAND SURVEYING