

BEAUFEAUX'S ADDITION

ANOKA COUNTY, MINNESOTA

CARTWRIGHT & OLSON
LAND SURVEYORS

KNOW ALL MEN BY THESE PRESENTS: That we, Joseph Daniel Beaufeaux and Harriet Louisa Beaufeaux, his wife, owners and proprietors of the following described property situate in the County of Anoka, State of Minnesota to-wit; Lots 35 and 36 and the North 33 feet of Lots 37 and 38, A Subdivision of the North-east quarter of Section Two (2) Township Thirty (30) Range Twenty-four (24), have caused the same to be surveyed and platted as BEAUFEAUX'S ADDITION and do hereby donate and dedicate to the public for public use forever the Streets and Avenues as shown on the annexed plat, also subject to Utility Easements as shown on the annexed plat. In witness whereof we have hereunto set our hands and seals this 9th day of August A.D. 1952
In the presence of _____ Signed _____

Joseph D. Beaufeaux As to J. D. B. Joseph D. Beaufeaux
Harriet L. Beaufeaux As to H. L. B. Harriet L. Beaufeaux

STATE OF MINNESOTA } s.s.
COUNTY OF RAMSEY }
On this 9 day of August A.D. 1952 before me, a Notary Public within and for said County and State personally appeared Joseph Daniel Beaufeaux and Harriet Louisa Beaufeaux, his wife, to me personally known to be the persons described in and who executed the foregoing instrument, and they affirm and acknowledge that they executed the same as their own free act and deed.
Harold B. Peterson
Notary Public, Ramsey County, Minnesota
My Commission Expires October 6 1956

I hereby certify that I have surveyed and platted the land described in the dedication on this plat as BEAUFEAUX'S ADDITION; that this plat is a correct representation of said survey; that all distances are correctly shown on said plat in figures denoting feet and decimals of a foot; that the monuments for the guidance of future surveys have been correctly placed in the ground as shown on said plat; that the topography of the land is correctly shown on said plat; and that there are no wet lands or public highways to be designated on said plat other than are shown thereon.

Harry C. Cartwright
Registered Land Surveyor, Minnesota Registration No. 1983

STATE OF MINNESOTA } s.s.
COUNTY OF HENNEPIN }
Above certificate subscribed and sworn to before me a Notary Public within and for said County and State on this 15th day of July A.D. 1952

Clara Mae Dickey
Notary Public, Hennepin County, Minnesota
My Commission Expires April 11, 1954

This is to certify that the above plat of BEAUFEAUX'S ADDITION was approved and accepted by the Planning and Zoning Commission and by the Town Board of the Township of Fridley at a regular meeting thereof held this 11 day of August A.D. 1952.

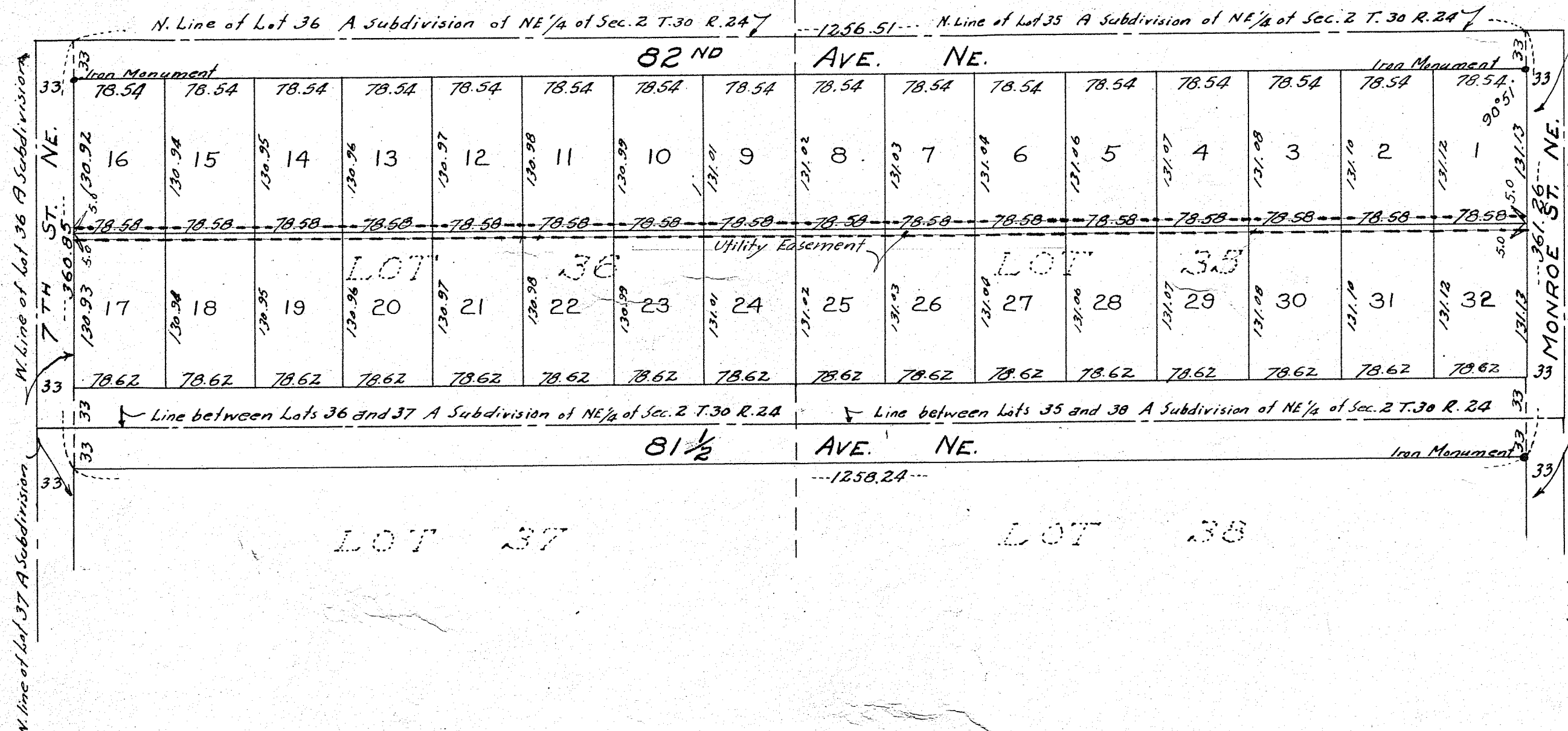
Walter F. Osborne
Chairman, Town of Fridley

Margie Small
Clerk, Town of Fridley

Stanley W. Dahlmeier

Robert C. Buckles

I hereby certify that taxes for the year 51 on the lands described within are paid
Walter B. Powers
County Treasurer



This plat was approved and accepted by the Honorable Board of County Commissioners of the County of Anoka, State of Minnesota, at a regular meeting held this 11th day of August A.D. 1952

J. B. Busch
Chairman, Board of County Commissioners
Anoka County, Minnesota

Kenneth W. Campbell
County Auditor, Anoka County, Minnesota

By _____ Deputy

This plat was approved as to form and execution this 11th day of August A.D. 1952

Robert deLoe
County Attorney, Anoka County, Minnesota

147276
OFFICE OF REGISTER OF DEEDS,
STATE OF MINNESOTA, COUNTY OF ANOKA } s.s.
I hereby certify that the within instrument was filed in this office for record on the 21 day of NOV. 1952 A. D. 1952 at 9 o'clock A.M., and was duly recorded in book 2 of State page 26
Gertrude B. Bussard
Register of Deeds

TAXES PAID
AND TRANSFER ENTERED
NOV 21 1952
Henrietta Campbell
Anoka County
Deputy

