

BEHM'S CENTURY FARM 4TH ADDITION

CITY OF LINO LAKES COUNTY OF ANOKA

KNOW ALL MEN BY THESE PRESENTS: That Century Farm Development, Inc., a Minnesota Corporation, owner and proprietor, and Builders Development & Finance, Inc., a Minnesota Corporation, mortgagee of the following described property situated in the County of Anoka, State of Minnesota, to-wit:

Lots 1, 2, 3, 4, 8, 9, 14 and 15, Block 4, SUNSET OAKS according to the duly recorded plat thereof.

That part of Lot 5, Block 4, SUNSET OAKS, according to the duly recorded plat thereof, lying northerly of a line drawn at right angles to the East line of said Lot 5, distant 428.30 feet South, as measured along said East line from the Northeast corner of said Lot 5.

The North 370 feet of Lots 6 and 7, Block 4, SUNSET OAKS, according to the duly recorded plat thereof.

Outlot B, BEHM'S CENTURY FARM 2ND ADDITION according to the duly recorded plat thereof.

Have caused the same to be surveyed and platted as BEHM'S CENTURY FARM 4TH ADDITION and do hereby donate and dedicate to the public for public use forever the courts and the easements for drainage and utility purposes as shown on the plat. In witness whereof said Century Farm Development, Inc., a Minnesota Corporation, has caused these presents to be signed by its proper officer this 2 day of JULY, 1998. In witness whereof said Builders Development & Finance, Inc., a Minnesota Corporation, has caused these presents to be signed by its proper officers this 2 day of JULY, 1998.
Signed: CENTURY FARM DEVELOPMENT, INC.

Gary Uhde
Gary Uhde, President

BUILDERS DEVELOPMENT & FINANCE, INC.

William T. Keenan III as PRESIDENT

Dave J. Swenson as VICE PRESIDENT

State of Minnesota
County of Hennepin The foregoing instrument was acknowledged before me this 2nd day of July, 1998, by Gary Uhde, as President of Century Farm Development, Inc., a Minnesota Corporation, on behalf of said Corporation.



Tracy A. Poppler
Notary Public, Carver County, Minnesota
My Commission Expires Jan. 31, 2000

State of Minnesota
County of Hennepin The foregoing instrument was acknowledged before me this 2nd day of July, 1998, by William T. Keenan, III, as President, and Dave J. Swenson, as Vice-President, of Builders Development & Finance, Inc., a Minnesota Corporation, on behalf of said Corporation.

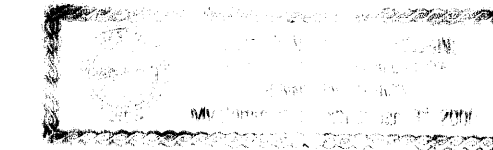


Tracy A. Poppler
Notary Public, Carver County, Minnesota
My Commission Expires Jan. 31, 2000

I hereby certify that I have surveyed and platted the Land described on this plat as BEHM'S CENTURY FARM 4TH ADDITION; that this plat is a correct representation of said survey; that all distances are correctly shown on said plat in feet and hundredths of a foot; that all monuments have been correctly placed in the ground as shown on said plat; that the outside boundary lines are correctly designated on said plat; and that there are no public highways or wetlands to be designated on said plat other than as shown thereon.

Milton E. Hyland
Milton E. Hyland, Land Surveyor
Minnesota Registration No. 20262

State of Minnesota
County of Hennepin The foregoing instrument was acknowledged before me this 17th day of June, 1998, by Milton E. Hyland, Land Surveyor.



Ruthanne Mary Hyland
Ruthanne Mary Hyland, Notary Public, Henn. Co., Minnesota
My Commission Expires January 31, 2000

LINO LAKES, MINNESOTA
We hereby certify that the City Council of Lino Lakes, Minnesota, duly accepted and approved the plat of BEHM'S CENTURY FARM 4TH ADDITION at a regular meeting thereof held this 8th day of June, 1998. If applicable, the written comments and recommendations of the Commissioner of Transportation and the County Highway Engineer have been received by the City or the prescribed 30 day period has elapsed without receipt of such comments and recommendations, as provided by Minn. Statutes, Section 505.03, Subd. 2.
CITY COUNCIL OF LINO LAKES, MINNESOTA

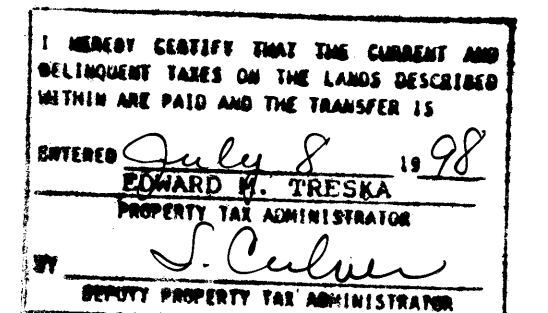
William J. Peltier Mayor Martine B. Anderson Clerk

This plat of BEHM'S CENTURY FARM 4TH ADDITION was checked and approved by me this 6th day of JULY, 1998.

Larry D. Hoi Anoka County Surveyor



1354682
OFFICE OF COUNTY RECORDER
STATE OF MINNESOTA, COUNTY OF ANOKA
I hereby certify that the within instrument was filed in this office for record on the July 8 A.D., 1998 at 9 o'clock A. M., and was duly recorded in book 56 page 2
Edward M. Tronta
County Recorder
By MAF
Deputy

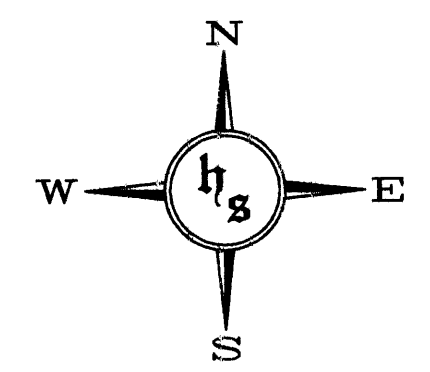
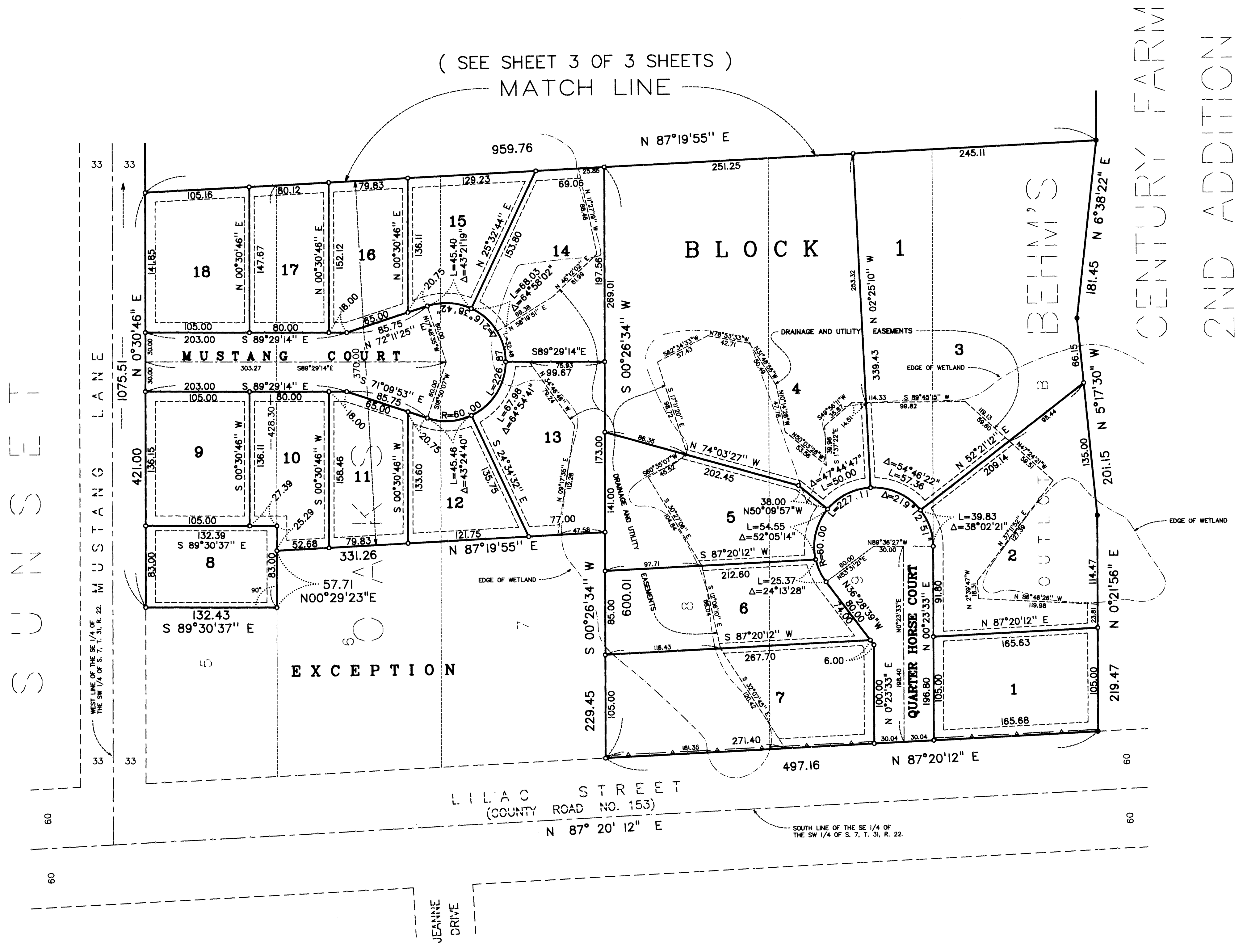


HY-LAND SURVEYING, P.A.
LAND SURVEYORS

BEHM'S CENTURY FARM 4TH ADDITION

CITY OF LINO LAKES COUNTY OF ANOKA

(SEE SHEET 3 OF 3 SHEETS)
MATCH LINE

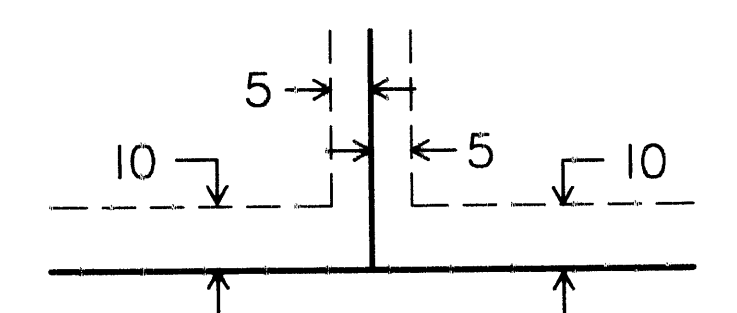


0 60 120 180
SCALE: 1 INCH = 60 FEET

- - DENOTES IRON MONUMENT TO BE SET WITHIN ONE YEAR OF THE RECORDING DATE OF THE PLAT, AND SHALL BE EVIDENCED BY 1/2 INCH X 14 INCH IRON, MARKED BY R.L.S. 20262.
- - DENOTES FOUND IRON MONUMENT.
- △ - DENOTES RIGHT OF ACCESS DEDICATED TO COUNTY OF ANOKA.

FOR THE PURPOSES OF THIS PLAT, THE SOUTH LINE OF THE SE 1/4 OF THE SW 1/4 OF SEC. 7, TWP. 31, RNG. 22 HAS AN ASSUMED BEARING OF N 87°20'12" E.

DRAINAGE AND UTILITY EASEMENTS SHOWN THUS:



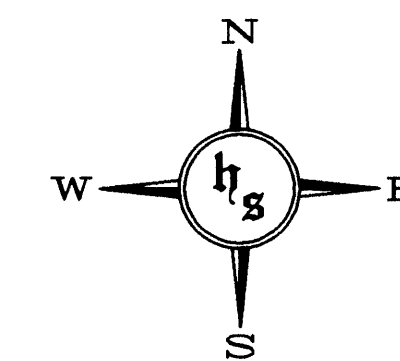
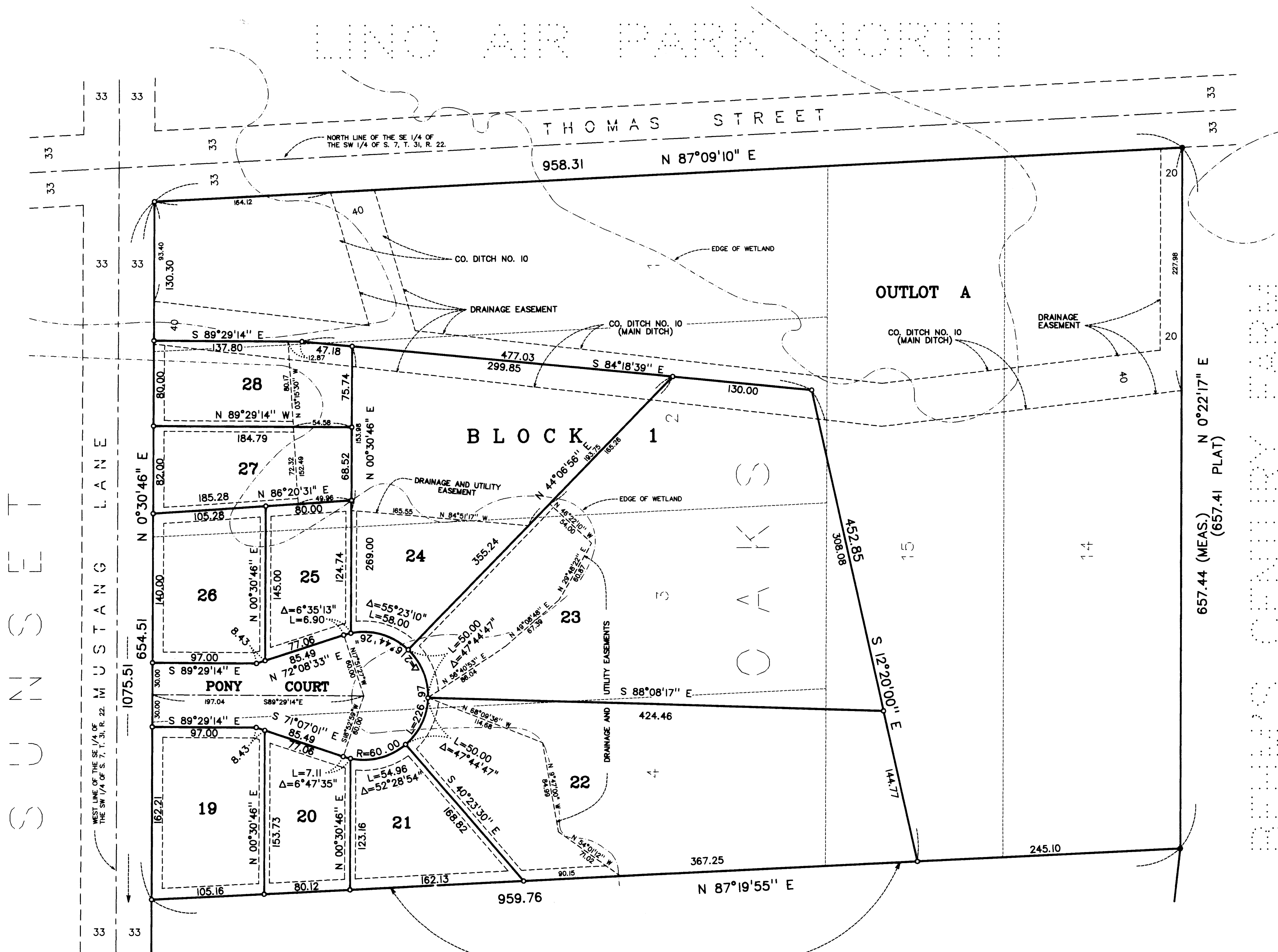
BEING 5.00 FEET IN WIDTH, AND ADJOINING LOT LINES, AND BEING 10.00 FEET IN WIDTH, AND ADJOINING RIGHT-OF-WAY LINES AND REAR LOT LINES UNLESS OTHERWISE SHOWN ON THE PLAT.

HY-LAND SURVEYING, P.A.
LAND SURVEYORS

BEHM'S CENTURY FARM 4TH ADDITION

CITY OF LINO LAKES COUNTY OF ANOKA

LINO AIR PARK NORTH

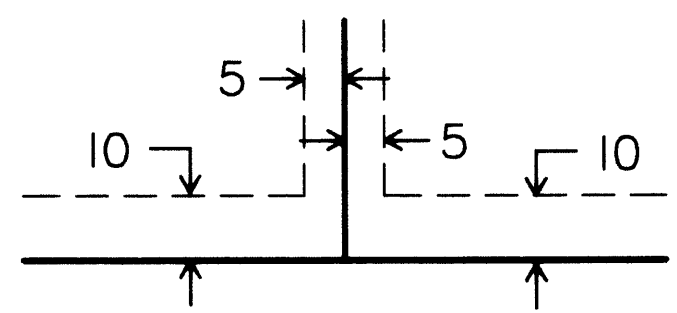


0 60 120 180
SCALE: 1 INCH = 60 FEET

- - DENOTES IRON MONUMENT TO BE SET WITHIN ONE YEAR OF THE RECORDING DATE OF THE PLAT, AND SHALL BE EVIDENCED BY 1/2 INCH X 14 INCH IRON, MARKED BY R.L.S. 20262.
- - DENOTES FOUND IRON MONUMENT.

FOR THE PURPOSES OF THIS PLAT, THE SOUTH LINE OF THE SE 1/4 OF THE SW 1/4 OF SEC. 7, TWP. 31, RNG. 22 HAS AN ASSUMED BEARING OF N 87°20'12" E.

DRAINAGE AND UTILITY EASEMENTS SHOWN THUS:



BEING 5.00 FEET IN WIDTH, AND ADJOINING LOT LINES, AND BEING 10.00 FEET IN WIDTH, AND ADJOINING RIGHT-OF-WAY LINES AND REAR LOT LINES UNLESS OTHERWISE SHOWN ON THE PLAT.

MATCH LINE
(SEE SHEET 2 OF 3 SHEETS)

HY-LAND SURVEYING, P.A.
LAND SURVEYORS