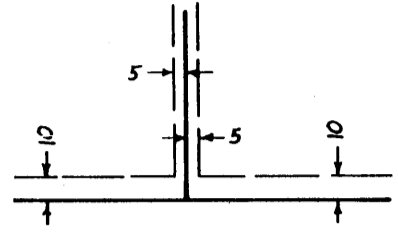


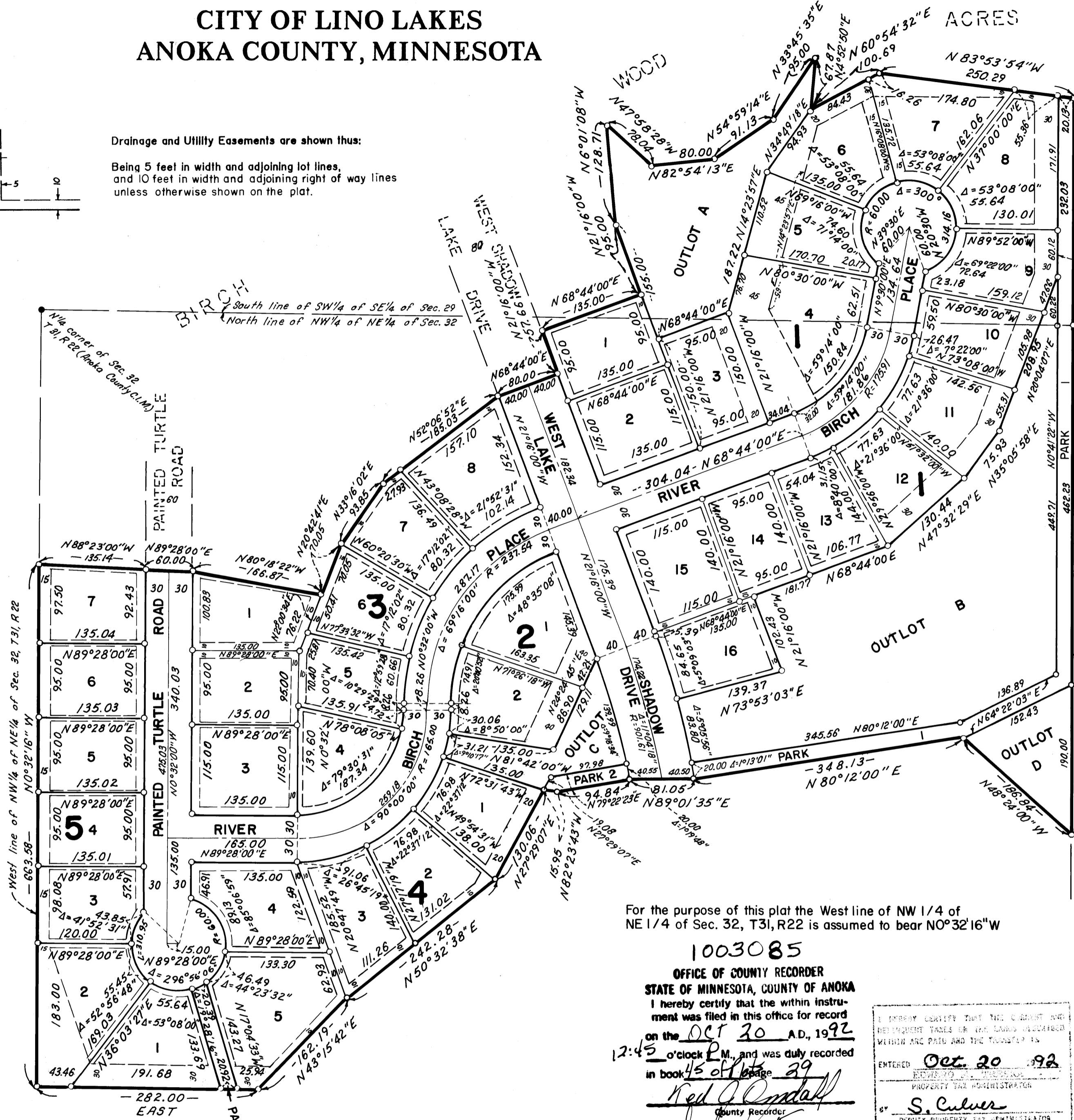
BIRCH WOOD ACRES SECOND ADDITION

CITY OF LINO LAKES
ANOKA COUNTY, MINNESOTA



Drainage and Utility Easements are shown thus:

Being 5 feet in width and adjoining lot lines,
and 10 feet in width and adjoining right of way lines
unless otherwise shown on the plat.

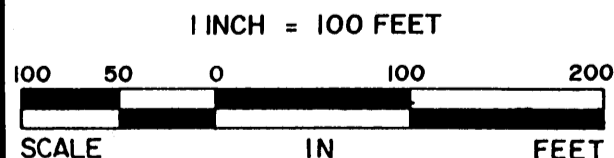


For the purpose of this plat the West line of NW 1/4 of NE 1/4 of Sec. 32, T31, R22 is assumed to bear N0°32'16"W

1003085

OFFICE OF COUNTY RECORDER
STATE OF MINNESOTA, COUNTY OF ANOKA
I hereby certify that the within instrument was filed in this office for record on the Oct 30 A.D., 1992 at 12:45 o'clock P.M. and was duly recorded in book 45 of page 29
Red O. Omdahl
County Recorder
Steve Karija
Deputy

STATE OF MINNESOTA
COUNTY OF ANOKA
I, S. Culver, Deputy Property Tax Administrator, do hereby certify that the within instrument was filed in this office for record on the Oct 20 A.D., 1992 at 12:45 o'clock P.M. and was duly recorded in book 45 of page 29
S. Culver
Deputy Property Tax Administrator



- Denotes Iron Monument Found
- Denotes Iron Monument and Marked "R.L.S. 10947" (1/2" x 14")

KNOW ALL PERSONS BY THESE PRESENTS: That Acorn Investments, Inc., a Minnesota Corporation, owners and proprietors and that Builders Development & Finance, Inc., a Minnesota Corporation, mortgagee, and that Birchwood Development, Inc., a Minnesota Corporation, contract purchaser of the following described property situated in the County of Anoka and the State of Minnesota to wit:

Outlot C, BIRCH WOOD ACRES, according to the recorded plat thereof, Anoka County, Minnesota

and that Paul Montain and Judith M. Montain, husband and wife, mortgagees, of the following described property situated in the County of Anoka and the State of Minnesota to wit:

That part of Outlot C, BIRCH WOOD ACRES according to the recorded plat thereof, Anoka County, Minnesota, lying Southerly of a line drawn from a point on the East line of the Northwest quarter of the Northeast quarter of Section 32, Township 31, Range 22 distant 331.28 feet South from the Northeast corner of said Northwest quarter of the Northeast quarter to a point on the West line of said Northwest quarter of the Northeast quarter distant 331.28 feet South from the Northwest corner of said Northwest quarter of the Northeast quarter

Have caused the same to be surveyed and platted as BIRCH WOOD ACRES SECOND ADDITION and do hereby donate and dedicate to the public use forever the drive, road, parks, place, and easements for drainage and utility purposes as shown on the plat.

In witness whereof said Acorn Investments, Inc., a Minnesota corporation, has caused these presents to be signed by its proper officer this 20th day of October, 1992.
Mort J. Huber
Mort J. Huber, Vice President

In witness whereof said Builders Development & Finance, Inc., a Minnesota corporation, has caused these presents to be signed by its proper officer this 13 day of October, 1992.
Will T. Kanan III
Will T. Kanan III, as President

In witness whereof said Paul Montain and Judith M. Montain, husband and wife, have hereunto set their hands this 19th day of Oct, 1992.
Paul Montain
Paul Montain
Judith M. Montain
Judith M. Montain

In witness whereof said Birchwood Development, Inc., a Minnesota corporation, has caused these presents to be signed by its proper officer this 13th day of October, 1992.
Marcel Eibensteiner
Marcel Eibensteiner, President

STATE OF MINNESOTA
COUNTY OF Ramsey
The foregoing instrument was acknowledged before me this 20th day of October, 1992, by Mort J. Huber, Vice President of Acorn Investments, Inc., a Minnesota corporation, on behalf of the corporation.
Dianne M. Sulzbach
Notary Public, Ramsey County, Minnesota
My commission Expires 8-20-96

STATE OF MINNESOTA
COUNTY OF Hennepin
The foregoing instrument was acknowledged before me this 13th day of October, 1992, by William T. Kanan, III, as President, of Builders Development & Finance, Inc., a Minnesota corporation on behalf of said corporation.
Larry A. Popper
Notary Public, Carter County, Minnesota
My Commission Expires Sept. 7, 1995

STATE OF MINNESOTA
COUNTY OF Ramsey
The foregoing instrument was acknowledged before me this 19th day of October, 1992, by Paul Montain and Judith M. Montain, husband and wife.
Dianne M. Sulzbach
Notary Public, Ramsey County, Minnesota
My Commission Expires 8-20-96

STATE OF MINNESOTA
COUNTY OF Ramsey
The foregoing instrument was acknowledged before me this 13th day of October, 1992, by Marcel Eibensteiner, President of Birchwood Development, Inc., a Minnesota corporation, on behalf of said corporation
Dianne M. Sulzbach
Notary Public, Ramsey County, Minnesota
My Commission Expires 8-20-96

I hereby certify that I have surveyed and platted the land described on this plat BIRCH WOOD ACRES SECOND ADDITION; that this plat is a true and correct representation of said survey; that all distances are correctly shown on the plat in feet and hundredths of a foot; that all monuments have been correctly placed in the ground as shown on said plat or will be placed as required by the local government unit as designated on said plat; and that there are no public highways or wetlands to be designated on said plat.

Rodney H. Halvorson
Rodney H. Halvorson, Land Surveyor
Minnesota License No. 10947

STATE OF MINNESOTA
COUNTY OF Anoka
The foregoing instrument was acknowledged before me this 14th day of October, 1992, by Rodney H. Halvorson, Land Surveyor.

Diane S. Halvorson
DIANE S. HALVORSON
NOTARY PUBLIC - MINNESOTA
RAMSEY COUNTY
My Commission Expires 7-30-93

The foregoing plat of BIRCH WOOD ACRES SECOND ADDITION was approved and accepted by the City Council of Lino Lakes, Minnesota at a regular meeting thereof held this 12th day of Oct, 1992. If applicable, the written comments and recommendations of the Commissioner of Transportation and the County Highway Engineer have been received by the City or the prescribed 30 day period has elapsed without receipt of such comments and recommendations, as provided by Minnesota Statutes, Section 505.03, Subd. 2.

CITY COUNCIL OF LINO LAKES, MINNESOTA
By *[Signature]* Mayor
By *Marie S. Anderson*, Clerk
Checked and approved this 20th day of Oct, 1992.
Walter D. Ande
Anoka County Surveyor

MIDWEST
Land Surveyors & Civil Engineers, Inc.