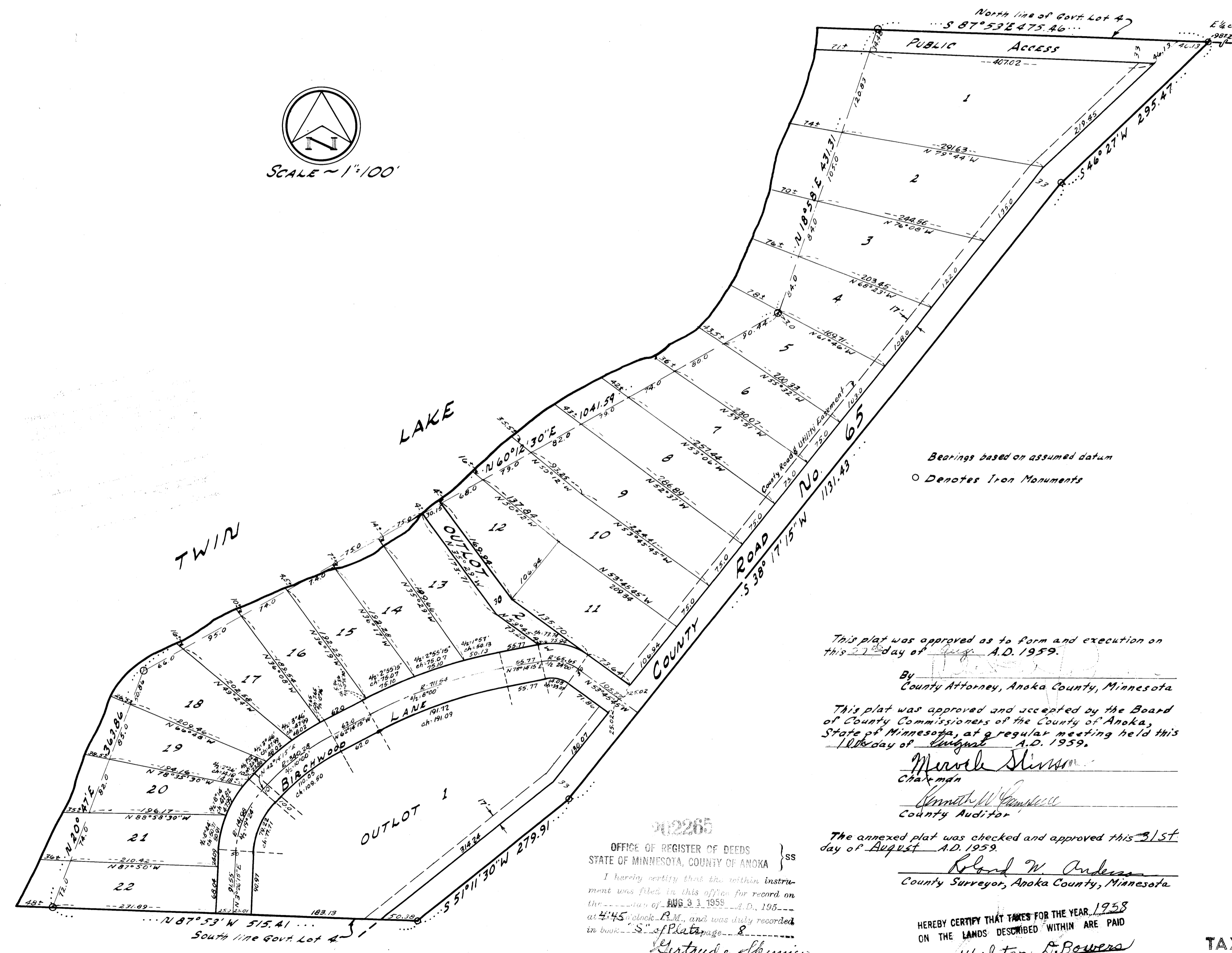
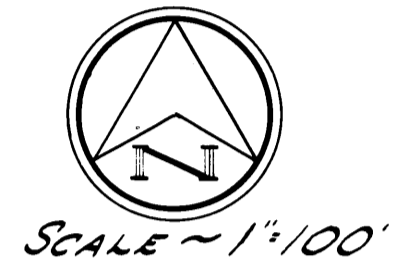


BIRCHWOOD

ANOKA COUNTY, MINNESOTA

CASWELL ENGINEERING CO.
ENGINEERS & LAND SURVEYORS



KNOW ALL MEN BY THESE PRESENTS: That The Elk River Company, a Minnesota Corporation, owners and proprietors, and Claudel Realty Company, a Minnesota Corporation, contract purchasers, of the following described property situated in the State of Minnesota, and County of Anoka, to wit:
All that part of Government Lot 4, lying North and West of County Road No. 65 in Section 19, Township 33, Range 25, as said road is now laid out and traveled, all in Anoka County, Minnesota.
Have caused the same to be surveyed and platted as BIRCHWOOD and do hereby donate and dedicate to the public for public use hereunder the Lane and Public Access as shown on the annexed plat. Also subject to utility and easements as shown on the annexed plat for use by municipality or other public utilities for installation and maintenance of facilities installed in and over said easements to serve adjacent or other premises in the vicinity.
In witness whereof The Elk River Company has caused these presents to be signed by its proper officers and its corporate seal to be hereunto affixed, and Claudel Realty Company has caused these presents to be signed by its proper officers and its corporate seal to be hereunto affixed this 15th day of June A.D. 1959.

In presence of
The Elk River Company
S.R. Houlton Pres.
L.S. Houlton and Ronald S. Eelingson
Fredrick E. Jones Sec.
Claudel Realty Company
Oscar P. Jones Pres.
James Speidhead and Fredrick E. Jones

State of Minnesota } ss.
County of Sherburne } ss.
On this 1st day of July A.D. 1959, before me, a Notary Public, within and for said County and State, personally appeared S.R. Houlton and S.R. Wheaton, to me personally known, and who being by me each duly sworn, did say that they are respectively President and Treasurer of The Elk River Company, the corporation named in the foregoing instrument, that the seal affixed to said instrument is the corporate seal of said Corporation, that said instrument was signed and sealed in behalf of said Corporation by authority of its board of directors; and said S.R. Houlton and S.R. Wheaton acknowledged said instrument to be the free act and deed of said Corporation.

S.R. Houlton
Notary Public, Sherburne County, Minnesota
My commission expires

State of Minnesota } ss.
County of Hennepin } ss.
On this 2nd day of July A.D. 1959, before me, a Notary Public, within and for said County and State, personally appeared Oscar P. Jones and Frederick E. Jones, to me personally known, and who being by me each duly sworn, did say that they are respectively President and Secretary of Claudel Realty Company, the corporation named in the foregoing instrument, that the seal affixed to said instrument is the corporate seal of said Corporation, that said instrument was signed and sealed in behalf of said Corporation by authority of its board of directors; and said Oscar P. Jones and Frederick E. Jones acknowledged said instrument to be the free act and deed of said Corporation.

James Speidhead
Notary Public, Anoka County, Minn.
My Commission expires

I hereby certify that I have surveyed and platted the property described on this plat as BIRCHWOOD; that this plat is a correct representation of said survey; that all distances are correctly shown on the plat in feet and decimals of a foot; that the monuments for the guidance of future surveys have been correctly placed in the ground as shown on the plat; that the topography of the land is correctly shown on the plat; that the outside boundary lines are correctly designated on the plat; and that there are no wetlands or public highways to be designated on said plat other than as shown thereon.

Donn E. Pepper
Donn E. Pepper, Registered Land Surveyor
Minnesota Reg. No. 5333

State of Minnesota } ss.
County of Hennepin } ss.
The above certificate was subscribed and sworn to before me this 1st day of July A.D. 1959

Edith Penice
Notary Public, Hennepin County, Minnesota
My commission expires Jan. 11, 1962

The annexed plat of BIRCHWOOD was approved by the Planning and Zoning Commission and by the Town Board of the Township of Burns at a regular meeting held this 16th day of June A.D. 1959.

Samuel H. Hines
Chairman of Town Board
Frederick Holst
Clerk of Town Board

Recommended for approval this 31st day of Aug. A.D. 1959.
E. J. Lundheim
County Highway Engineer, Anoka County, Minnesota

Bearings based on assumed datum
O Denotes Iron Monuments

This plat was approved as to form and execution on this 27th day of July A.D. 1959.

By _____
County Attorney, Anoka County, Minnesota

This plat was approved and accepted by the Board of County Commissioners of the County of Anoka, State of Minnesota, at a regular meeting held this 10th day of August A.D. 1959.

Margaret Skirwin
Chairman
Kenneth W. Anderson
County Auditor

The annexed plat was checked and approved this 31st day of August A.D. 1959.

Robert W. Anderson
County Surveyor, Anoka County, Minnesota

HEREBY CERTIFY THAT TAXES FOR THE YEAR 1958 ON THE LANDS DESCRIBED WITHIN ARE PAID

Walter B. Bowers
County Treasurer
Sig A. Larson
deputy

TAXES PAID

This 31st day of Aug. 1959
Kenneth W. Campbell
Auditor, Anoka County, Minn.
Leola E. Sage
deputy

902265
OFFICE OF REGISTER OF DEEDS
STATE OF MINNESOTA, COUNTY OF ANOKA } ss.
I hereby certify that the within instrument was filed in this office for record on the 31st day of AUG. 31, 1959 A.D. 1959 at 4:45 o'clock P.M., and was duly recorded in book 158 page 8.

Margaret Skirwin
Register of Deeds
By Margaret Russell
deputy