

BLACK DUCK ESTATES

Know All Persons By These Presents that Royal Oaks Realty, Inc., a Minnesota Corporation, owner and Builders Development & Finance, Inc., a Minnesota Corporation, mortgagee of the following described property situated in Anoka County, Minnesota:

Outlot A, Lakes Addition No. 8, Anoka County, Minnesota.

Outlot J, Lakes Addition No. 2, Anoka County, Minnesota, except Parcel 30, Anoka County Highway Right of Way Plat No. 11.

That part of Outlot A, Lakes Addition No. 7, Anoka County, Minnesota, lying east of the northerly extension of the westline of Lot 15, Block 1, and lying westerly of the northerly extension of the east line of Lot 6, Block 1, Lakes Addition No. 7, Anoka County, Minnesota.

Lots 13 through 28, Block 3 and Lots 5 through 16, Block 1, Lakes Addition No. 7, Anoka County, Minnesota, together with that part of Reshanau Lane that has accrued to said lots by reason of vacation.

Have caused the same to be surveyed, platted and known as BLACK DUCK ESTATES and do hereby dedicate to the public for the public use forever the courts and also dedicate the drainage and utility easements as shown on the plat.

In witness whereof said Royal Oaks Realty, Inc., a Minnesota corporation, has caused these presents to be signed this 27th day of September, 1992.

ROYAL OAKS REALTY, INC.

By Marcel Eibensteiner President
Marcel Eibensteiner

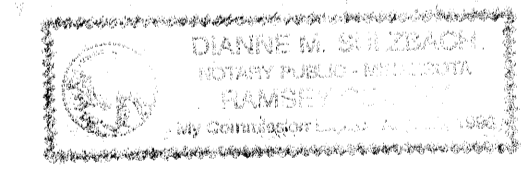
In witness whereof said Builders Development & Finance, Inc., a Minnesota corporation, has caused these presents to be signed this 27th day of September, 1992.

BUILDERS DEVELOPMENT & FINANCE, INC.

By Bill Keenan President
Bill Keenan

State of Minnesota)
County of Ramsey

The foregoing instrument was acknowledged before me this 27th day of September, 1992, by Marcel Eibensteiner, president, of Royal Oaks Realty, Inc., a Minnesota corporation, on behalf of the corporation.

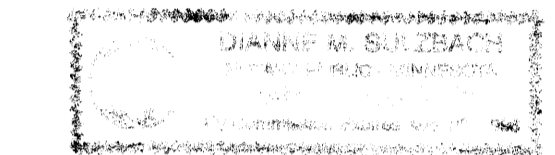


Dianne M. Sulzbach
Notary Public, Ramsey County, Minnesota
My Commission Expires 8-20-96

E. G. RUD & SONS, INC.
LAND SURVEYORS

State of Minnesota)
County of Ramsey

The foregoing instrument was acknowledged before me this 28th day of September, 1992, by Bill Keenan, president, of Builders Development & Finance, Inc., a Minnesota corporation, on behalf of the corporation.



Dianne M. Sulzbach
Notary Public, Ramsey County, Minnesota
My Commission Expires 8-20-96

I, Ernest G. Rud, hereby certify that I have surveyed and platted the property described in the dedication of this plat as BLACK DUCK ESTATES; that this plat is a correct representation of said survey; that all distances are correctly shown on said plat in feet and hundredths of a foot; that all monuments have been correctly placed in the ground as shown on said plat or will be placed as required by the local governmental unit as designated on the plat; and there are no wetlands or public highways other than as shown thereon.

Ernest G. Rud
Ernest G. Rud, Land Surveyor
Minnesota Registration No. 9808

State of Minnesota)
County of Anoka)

The Surveyor's certificate was acknowledged before me, a Notary Public, this 27th day of August, 1992, by Ernest G. Rud, registered land surveyor.



Marian E. Rud
Notary Public, Anoka County, Minnesota
My Commission Expires May 24, 1997

This plat of BLACK DUCK ESTATES was approved and accepted by the City Council of the City of Lino Lakes, Minnesota, this 14th day of Sept, 1992. If applicable the written comments and recommendations of the Commissioner of Transportation and the County Highway Engineer have been received by the City or the prescribed 30 day period has elapsed without receipt of such comments and recommendations, as provided by Minnesota Statutes Section 505.03, Subdivision 2.

Wes
Mayor

Marie B. Anderson
Clerk

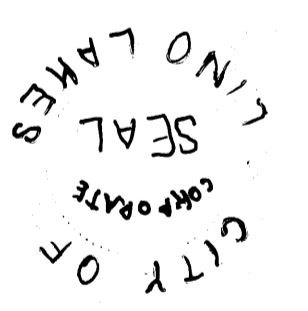
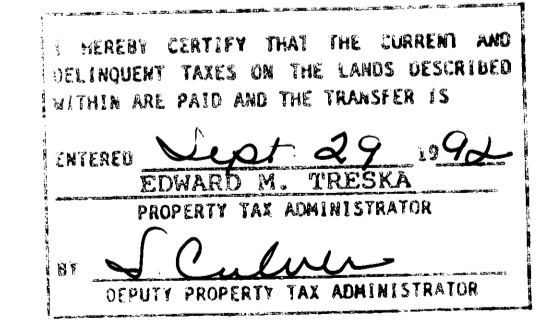
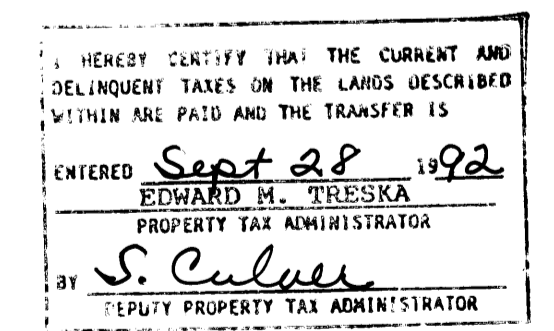
Checked and approved this 25th day of SEPT., 1992.

MERLYN D. ANDERSON
Merlyn D. Anderson
Anoka County Surveyor

By Larry J. Blain deputy

1000033

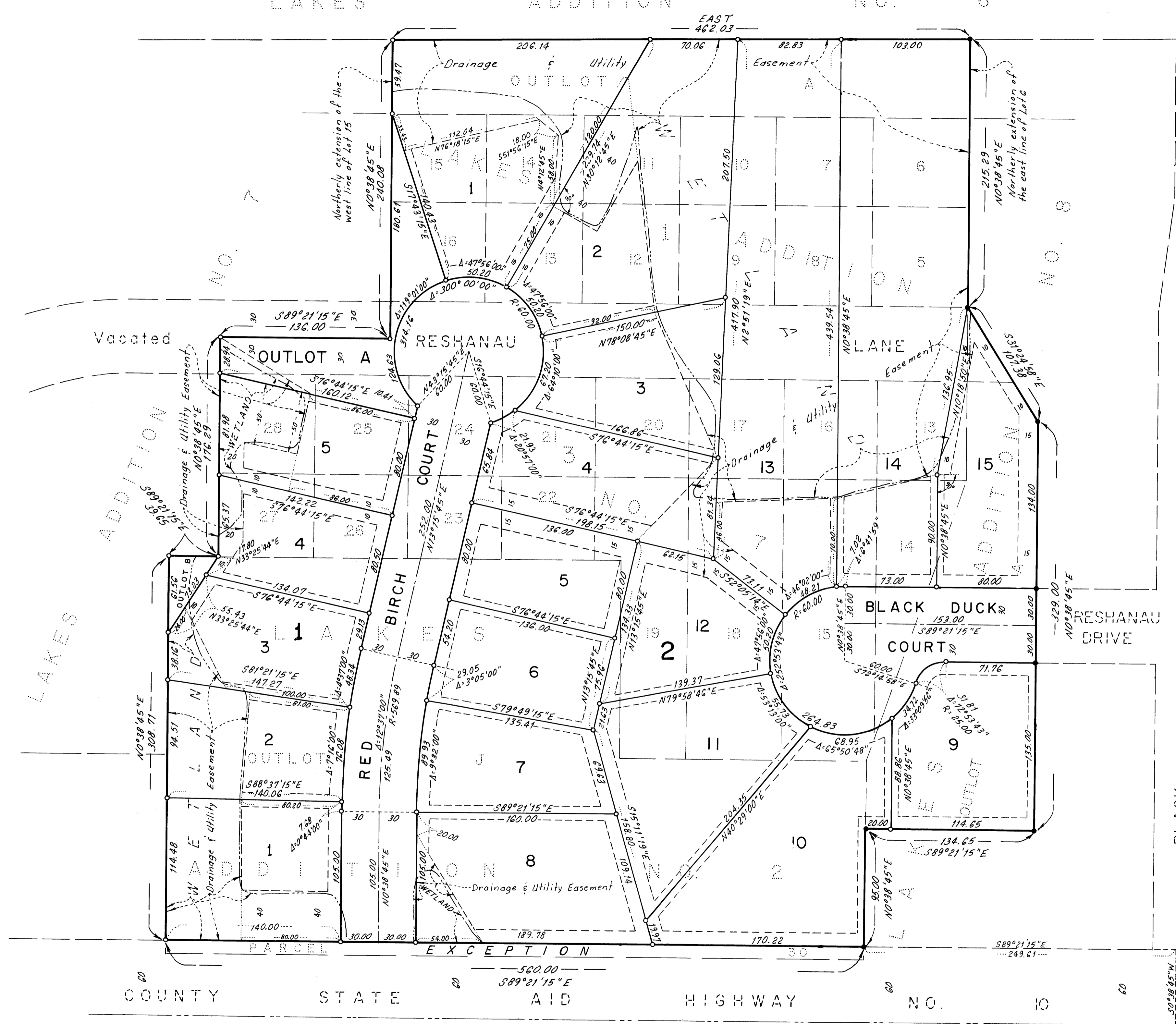
OFFICE OF COUNTY RECORDER
STATE OF MINNESOTA, COUNTY OF ANOKA
I hereby certify that the within instrument was filed in this office for record on the SEP 29 A.D., 1992 at 8:40 o'clock A.M., and was duly recorded in book 45 of Plats page 22
Red J. Kondall
County Recorder
By Doreen Kay Ege
Deputy



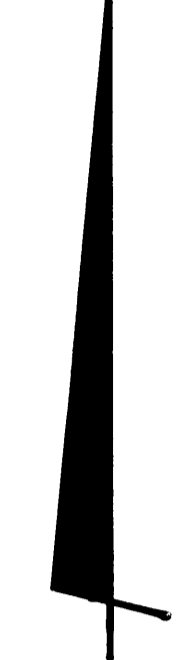
BLACK DUCK ESTATES

LAKES ADDITION NO. 6

City of LINO LAKES; Anoka County



North



Scale: 1 Inch = 50 Feet

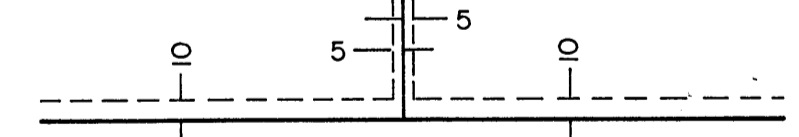


SCALE IN FEET

The orientation of this bearing system is based on the South line of the NE 1/4 of Section 28, Township 31, Range 22, which is assumed to bear $S89^{\circ}21'15''E$.

- Denotes found monument.
- Denotes set iron pipe.

Drainage and utility easements are shown thus:



Being 5 feet in width and adjoining lot lines, and being 10 feet in width and adjoining right-of-way lines, unless otherwise indicated and shown on the plat.

E. G. RUD & SONS, INC. ANOKA COUNTY HIGHWAY RIGHT OF WAY PLAT NO. 11
 LAND SURVEYORS

1/4 corner of Sec. 28,
 Twp. 31, Rge. 22
 Anoka Co. Mon.