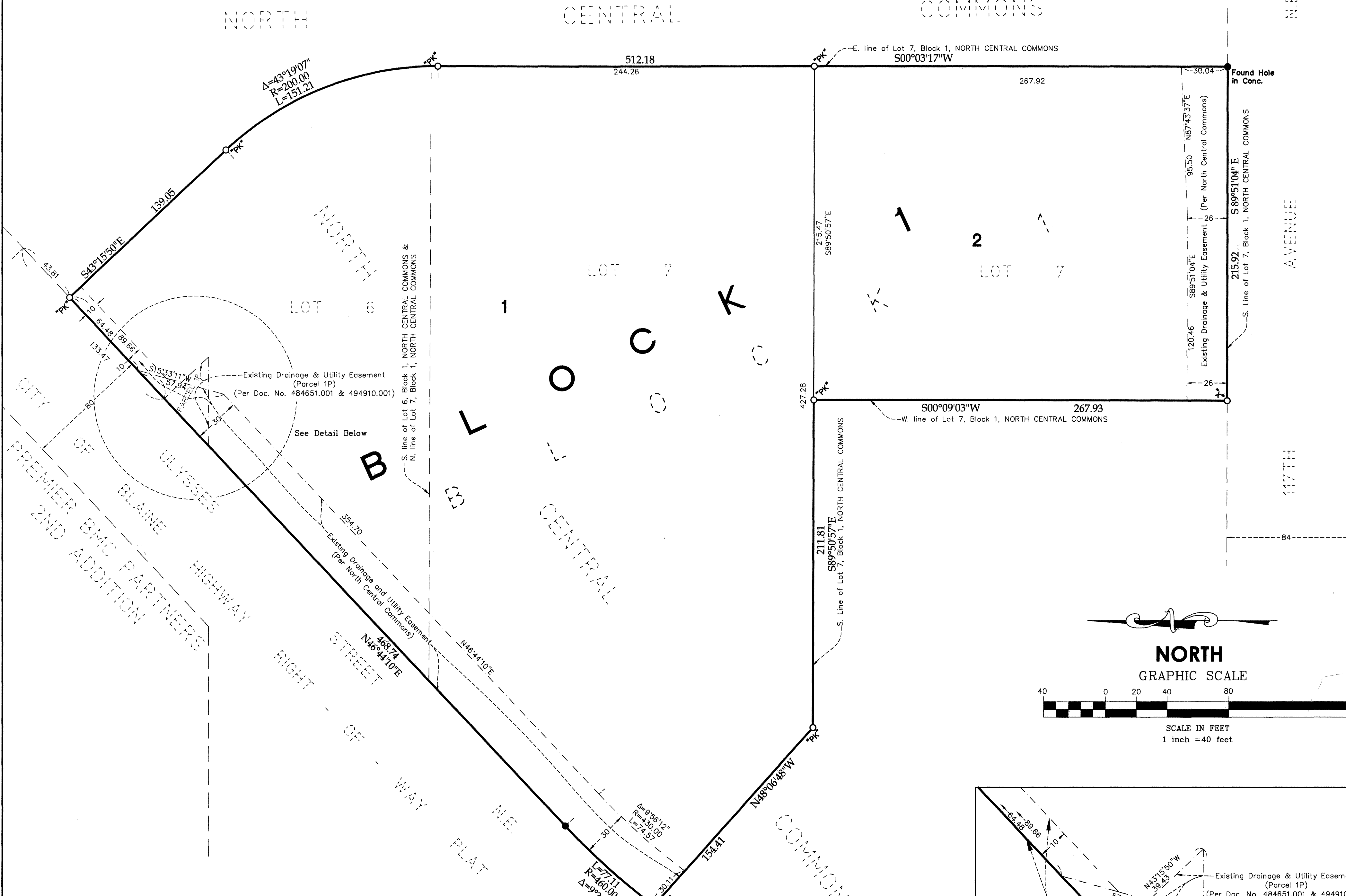


# BLAINE ALZHEIMERS SPECIAL CARE CENTER

BOOK 22 of TORN PG 15 CITY OF BLAINE  
COUNTY OF ANOKA  
SEC. 8, T. 31, R. 23



CENTRAL AVENUE  
ACRES  
THIRD ADD.  
CENTRAL AVENUE  
ACRES  
SECOND ADD.

KNOW ALL PERSONS BY THESE PRESENTS: That North Central Properties, Inc., a Minnesota corporation, owner of the following described property:

Lot 6, Block 1, NORTH CENTRAL COMMONS, Anoka County, Minnesota,

And

Lot 7, Block 1, NORTH CENTRAL COMMONS, Anoka County, Minnesota.

Has caused the same to be surveyed and platted as BLAINE ALZHEIMERS SPECIAL CARE CENTER.

In witness whereof said North Central Properties, Inc., a Minnesota corporation, has caused these presents to be signed by its proper officer this 17th day of MARCH, 2015.

NORTH CENTRAL PROPERTIES, INC.

Paul Stone  
Paul Stone, President

STATE OF MINNESOTA  
COUNTY OF Anoka

This instrument was acknowledged before me this 17th day of March, 2015 by Paul Stone, President of North Central Properties, Inc., a Minnesota corporation, on behalf of the corporation.

Shari L. Albrecht  
Shari L. Albrecht  
Notary Public, Anoka County, Minnesota  
My Commission expires 1-31-2020

I, Lyle C. Reynolds do hereby certify that this plat was prepared by me or under my direct supervision; that I am a duly Licensed Land Surveyor in the State of Minnesota; that this plat is a correct representation of the boundary survey; that all mathematical data and labels are correctly designated on this plat; that all monuments depicted on this plat have been, or will be correctly set within one year; that all water boundaries and wet lands, as defined in Minnesota Statutes, Section 505.01, Subd. 3, as of the date of this certificate are shown and labeled on this plat; and all public ways are shown and labeled on this plat.

Filed this 17th day of March, 2015.

Lyle C. Reynolds  
Lyle C. Reynolds, Licensed Land Surveyor  
Minnesota License Number 13072

STATE OF MINNESOTA  
COUNTY OF Anoka

This instrument was acknowledged before me this 17th day of March, 2015 by Lyle C. Reynolds.

Shari L. Albrecht  
Shari L. Albrecht  
Notary Public, Anoka County, Minnesota  
My Commission expires 1-31-2020

City Council, City of Blaine, Minnesota

This plat of BLAINE ALZHEIMERS SPECIAL CARE CENTER was approved and accepted by the City Council of the City of Blaine, Minnesota at a regular meeting thereof held this 5th day of February, 2015, and said plat is in compliance with the provisions of Minnesota Statutes, Section 505.03, Subd. 2.

City Council, City of Blaine, Minnesota

By Alan Egan Mayor By Catherine Estrada Clerk

COUNTY SURVEYOR

I hereby certify that in accordance with Minnesota Statutes, Section 505.021, Subd. 11, this plat has been reviewed and approved this 22nd day of March, 2015.

By Larry D. Holm  
Larry D. Holm, Anoka County Surveyor

COUNTY AUDITOR/TREASURER

Pursuant to Minnesota Statutes, Section 505.021, Subd. 9, taxes payable in the year 2015 on the land hereinbefore described have been paid. Also, pursuant to Minnesota Statutes, Section 272.12, there are no delinquent taxes and transfer entered this 22 day of April, 2015.

Jonell M Sawyer  
Jonell M Sawyer  
Property Tax Administrator

By CGT Deputy

County Recorder/Registrar of Titles

County of Anoka, State of Minnesota

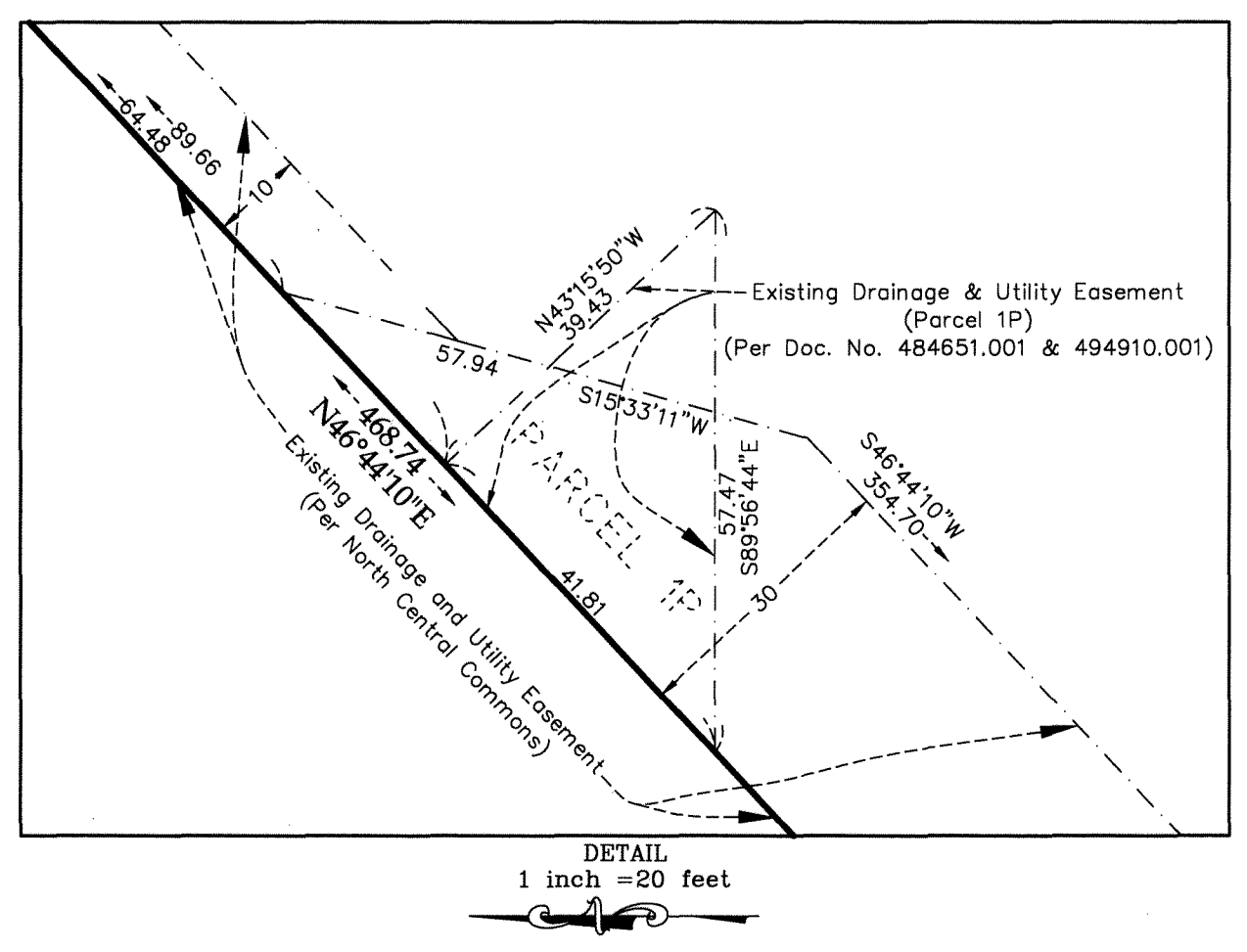
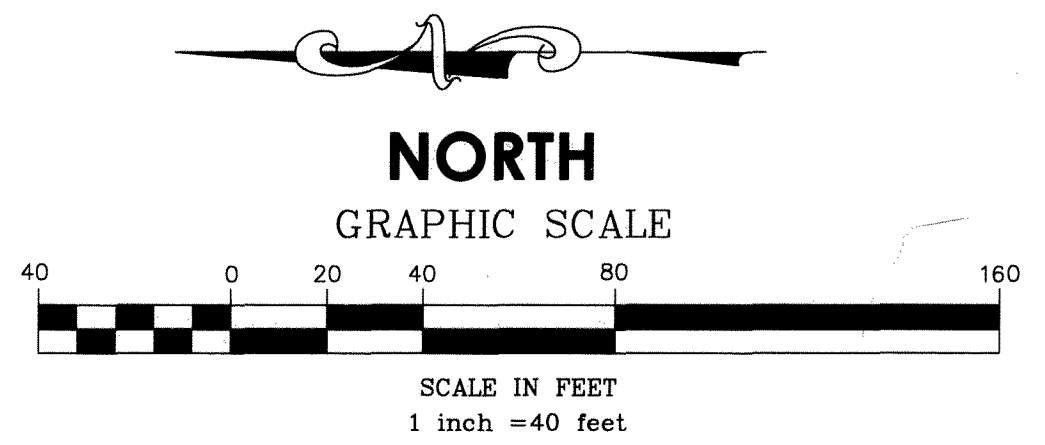
I hereby certify that this plat of BLAINE ALZHEIMERS SPECIAL CARE CENTER was filed in the office of the County Recorder/Registrar of Titles for public record on this 21 day of April, 2015 at 10:40 o'clock A.M. and was duly recorded in Book 22 Page 15, as Document Number 52491.006.

Jonell M Sawyer  
Jonell M Sawyer  
County Recorder/Registrar of Titles

By CGT Deputy

For the purposes of this plat, the east line of Lot 7, Block 1, NORTH CENTRAL COMMONS, Anoka County, Minnesota is assumed to bear South 00 degrees 03 minutes 17 seconds West.

- Denotes iron monument found.
- Denotes "PK" set in bituminous
- × Denotes "X" set in concrete
- Denotes 1/2 inch by 14 inch iron monument set and marked by L.S. No. 13072.



\$56.00