

BLAINE EDA PARK SHORES

KNOW ALL PERSONS BY THESE PRESENTS: That Blaine Economic Development Authority, a Minnesota corporation, owner of the following described property:

Lot 69, Lot 70, Lot 71 and Lot 72, SPRING LAKE PARK SHORES, ADDITION, Anoka County, Minnesota.

Has caused the same to be surveyed and platted as BLAINE EDA PARK SHORES and does hereby dedicate to the public for public use the public way and the drainage and utility easements as shown on this plat.

In witness whereof said Blaine Economic Development Authority, a Minnesota corporation, has caused these presents to be signed by its proper officer this 16th day of September, 2014.

BLAINE ECONOMIC DEVELOPMENT AUTHORITY

Tom Ryan
as President

STATE OF MINNESOTA
COUNTY OF Anoka

This instrument was acknowledged before me this 18th day of September, 2014 by Tom Ryan as President of Blaine Economic Development Authority, a Minnesota corporation, on behalf of the corporation.

Catherine Marie Sorensen
Notary Public, Anoka County, Minnesota
My Commission Expires 1-31-2015

I Jason E. Rud do hereby certify that this plat was prepared by me or under my direct supervision; that I am a duly Licensed Land Surveyor in the State of Minnesota; that this plat is a correct representation of the boundary survey; that all mathematical data and labels are correctly designated on this plat; that all monuments depicted on this plat have been, or will be correctly set within one year; that all water boundaries and wet lands, as defined in Minnesota Statutes, Section 505.01, Subd. 3, as of the date of this certificate are shown and labeled on this plat; and all public ways are shown and labeled on this plat.

Dated this 16th day of September, 2014.

Jason E. Rud
Jason E. Rud, Licensed Land Surveyor
Minnesota License No. 41578

STATE OF MINNESOTA
COUNTY OF ANOKA

This instrument was acknowledged before me this 16th day of September, 2014 by Jason E. Rud.

Nicole A. Johnson
Notary Public, Anoka County, Minnesota
My Commission Expires Jan 31, 2015

City Council, City of Blaine, Minnesota

This plat of BLAINE EDA PARK SHORES was approved and accepted by the City Council of the City of Blaine, Minnesota at a regular meeting thereof held this 10th day of July, 2014, and said plat is in compliance with the provisions of Minnesota Statutes, Section 505.03, Subd. 2.

City Council, City of Blaine, Minnesota

By John Ryan Mayor

By Catherine Sorensen Clerk

County Surveyor

I hereby certify that in accordance with Minnesota Statutes, Section 505.021, Subd. 11, this plat has been reviewed and approved this 19th day of December, 2014.

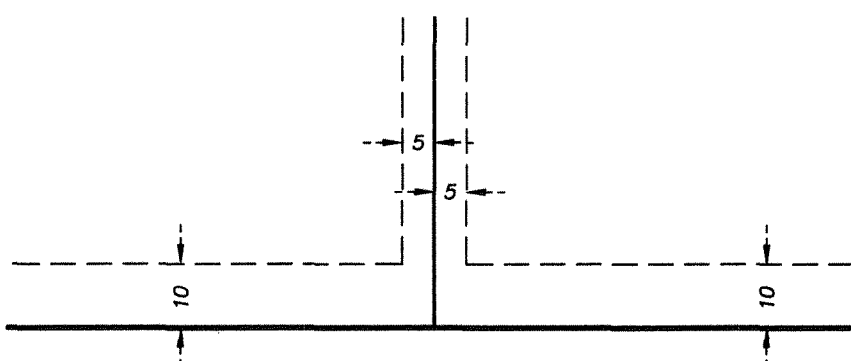
Larry D. Holm by Jason AB
Larry D. Holm
Anoka County Surveyor

I HEREBY CERTIFY THAT THE CURRENT AND DELINQUENT TAXES ON THE LANDS DESCRIBED WITHIN ARE PAID AND THE TRANSFER IS ENTERED 11/19/2014
Jonelle M. Sawyer
PROPERTY TAX ADMINISTRATOR
BY ERC DEPUTY

2094848.002
OFFICE OF RECORDS & REGISTRATION
OF TITLES
STATE OF MINNESOTA COUNTY OF ANOKA
I hereby certify that the within instruments were filed in this office for record on the 19th day of Nov, 2014 at 2:03 o'clock P.M. and was duly recorded in book 77, page 41
ABST
Jonelle M. Sawyer
Register of Titles

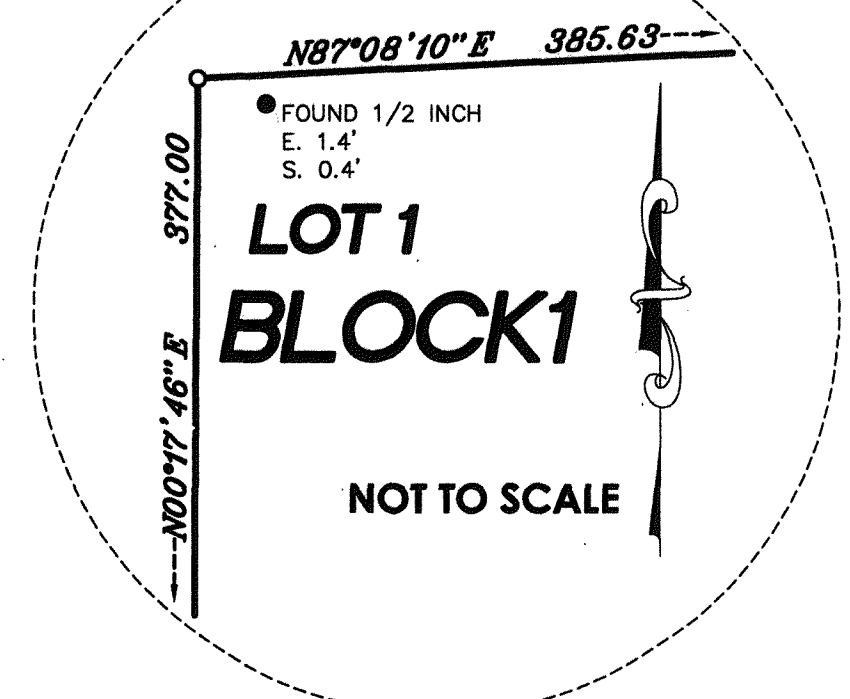
By ERC

DRAINAGE AND UTILITY EASEMENTS ARE SHOWN THUS:



BEING 10 FEET IN WIDTH ADJOINING RIGHT OF WAY LINES AND 5 FEET IN WIDTH ADJOINING LOT LINES UNLESS OTHERWISE SHOWN.

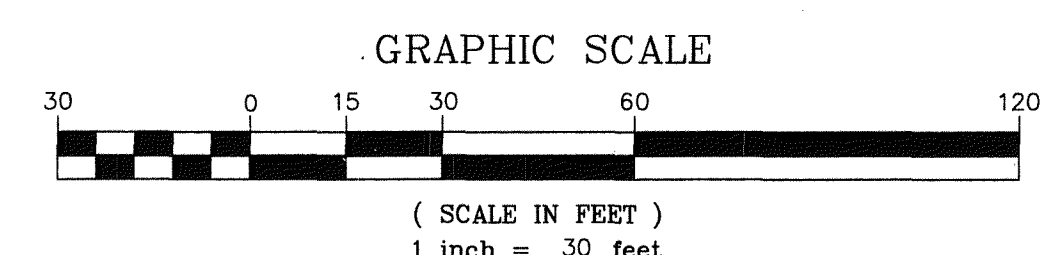
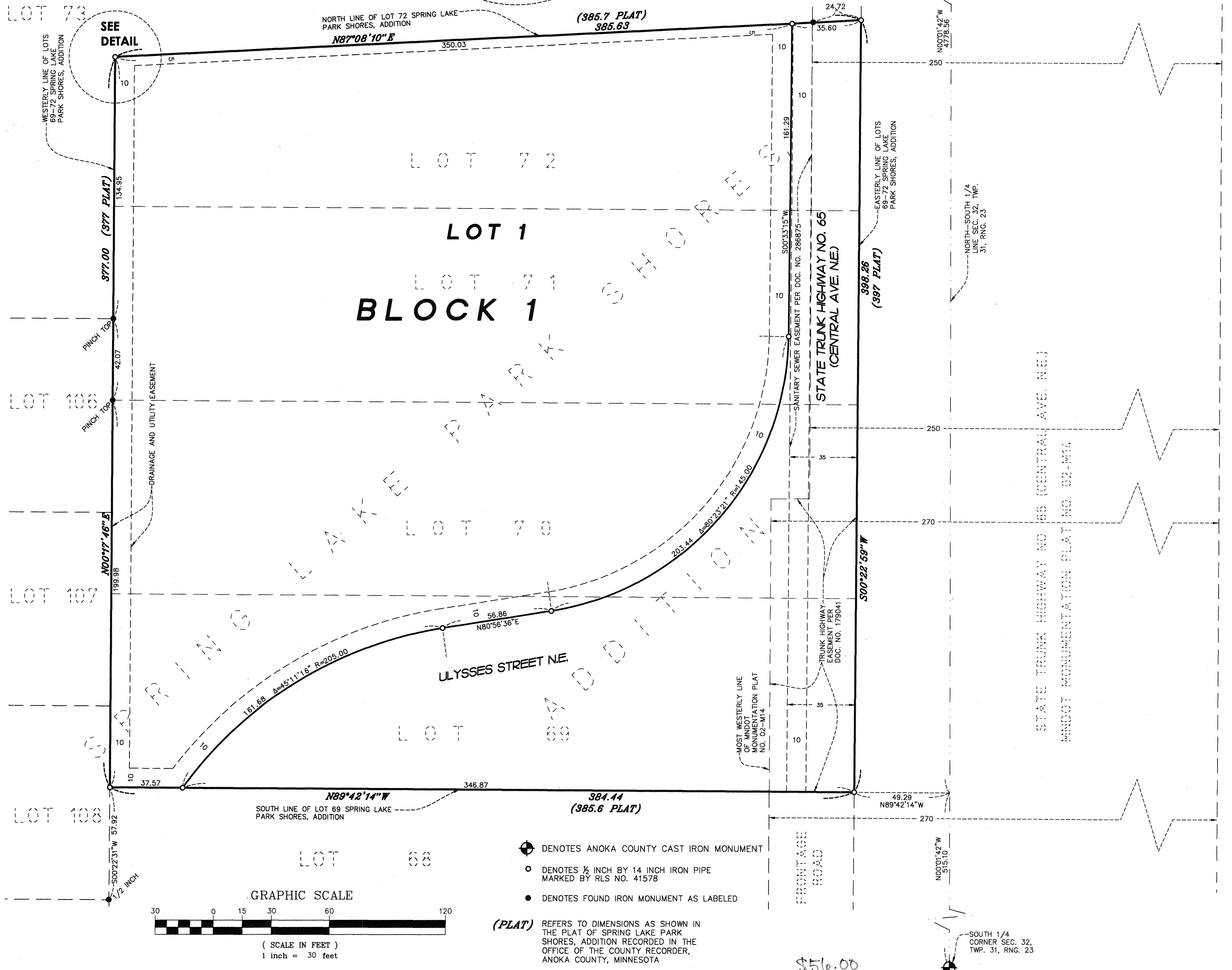
DETAIL



NOT TO SCALE

NORTH

FOR THE PURPOSES OF THIS PLAT THE WESTERLY LINE OF LOTS 69-72, SPRING LAKE PARK SHORES, ADDITION IS ASSUMED TO BEAR NORTH 00 DEGREES 17 MINUTES 46 SECONDS EAST.



- ⊕ DENOTES ANOKA COUNTY CAST IRON MONUMENT
- DENOTES 1/2 INCH BY 14 INCH IRON PIPE MARKED BY RLS NO. 41578
- DENOTES FOUND IRON MONUMENT AS LABELED

(PLAT) REFERS TO DIMENSIONS AS SHOWN IN THE PLAT OF SPRING LAKE PARK SHORES, ADDITION RECORDED IN THE OFFICE OF THE COUNTY RECORDER, ANOKA COUNTY, MINNESOTA

\$56.00