

# BLAINE PRESERVE BUSINESS PARK THIRD ADDITION

City of Blaine  
County of Anoka  
Sec. 26, Twp. 31, Rng. 23

KNOW ALL MEN BY THESE PRESENTS: That Blaine Ponds Joint Venture LLC, a Minnesota limited liability company, owner and M & I Marshall and Iley Bank, a Wisconsin corporation, mortgagee of the following described property situated in the State of Minnesota, County of Anoka, to wit:

Outlots A and B, BLAINE PRESERVE BUSINESS PARK SECOND ADDITION, Anoka County, Minnesota.

Have caused the same to be surveyed and platted as BLAINE PRESERVE BUSINESS PARK THIRD ADDITION and do hereby dedicate to the public for public use forever the drainage and utility easements as shown on this plat.

In witness whereof said Blaine Ponds Joint Venture LLC, a Minnesota limited liability company, has caused these presents to be signed by its proper officers this 17th day of March, 2010.

Blaine Ponds Joint Venture LLC

Frank J. Dutke, Chief Manager  
William P. Katter, Vice President/Manager

STATE OF MINNESOTA  
COUNTY OF Anoka

This instrument was acknowledged before me this 17th day of March, 2010, by Frank J. Dutke, as Chief Manager and by William P. Katter, as Vice President/Manager of Blaine Ponds Joint Venture LLC, a Minnesota limited liability company, on behalf of the company.

Ardis E. Hanson  
Notary Public, Anoka County, Minnesota  
My Commission Expires January 31, 2015

In witness whereof said M & I Marshall and Iley Bank, a Wisconsin corporation, has caused these presents to be signed by its proper officer this 23rd day of March, 2010.

M & I Marshall and Iley Bank  
Ward M. Hertsted, Vice President

STATE OF MINNESOTA  
COUNTY OF Anoka

This instrument was acknowledged before me this 19th day of March, 2010, by Ward M. Hertsted, as Vice President of M & I Marshall and Iley Bank, a Wisconsin corporation, on behalf of the corporation.

Erin P. P. P.  
Notary Public, Anoka County, Minnesota  
My Commission Expires January 31, 2015

I Daniel W. Obermiller do hereby certify that this plat was prepared by me or under my direct supervision; that I am a duly Licensed Land Surveyor in the State of Minnesota; that this plat is a correct representation of the boundary survey; that all mathematical data and labels are correctly designated on this plat; that all monuments depicted on this plat have been, or will be correctly set within one year; that all water boundaries and wet lands, as defined in Minnesota Statutes 505.01, Subd. 3, as of the date of this certificate are shown and labeled on this plat; and all public ways are shown and labeled on this plat.

Dated this 15th day of March, 2010.

Daniel W. Obermiller  
Daniel W. Obermiller, Licensed Land Surveyor  
Minnesota Registration No. 25341

STATE OF MINNESOTA  
COUNTY OF Anoka

This instrument was acknowledged before me this 15th day of March, 2010, by Daniel W. Obermiller, Land Surveyor.

Debbie L. Munnich  
Notary Public, Anoka County, Minnesota  
My Commission Expires JAN 31, 2014

City Council, City of Blaine, Minnesota

This plat of BLAINE PRESERVE BUSINESS PARK THIRD ADDITION was approved and accepted by the City Council of the City of Blaine, Minnesota at a regular meeting thereof held this 19th day of November, 2009, and said plat is in compliance with the provisions of Minnesota Statutes, Section 505.03, Subd. 2.

City Council, City of Blaine, Minnesota

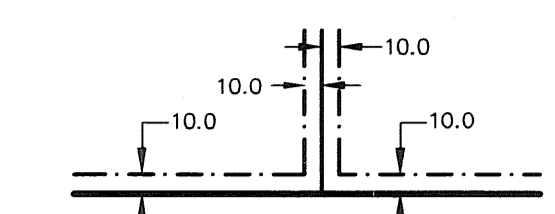
By Tom Cross Mayor By JoAnn Cross Clerk

I hereby certify that in accordance with Minnesota Statutes, Section 505.021, Subd. 11, this plat has been reviewed and approved this 25th day of March, 2010.

Larry D. Holm by Charles F. Setzer, Deputy  
Larry D. Holm  
Anoka County Surveyor

- DENOTES ANOKA COUNTY CAST IRON MONUMENT
- DENOTES A 1/2 INCH BY 18 INCH IRON PIPE MARKED BY RLS 25341 TO BE SET WITHIN ONE YEAR OF THE RECORDING DATE OF THIS PLAT.
- DENOTES 1/2 INCH FOUND IRON MONUMENT.
- DENOTES RIGHT OF ACCESS DEDICATED TO THE STATE OF MINNESOTA AND ANOKA COUNTY.
- - - DENOTES DRAINAGE AND UTILITY EASEMENT

DRAINAGE AND UTILITY EASEMENTS ARE SHOWN THUS:



BING 10 FEET IN WIDTH AND ADJOINING SIDE LOT LINES, STREET LINES AND REAR LOT LINES, UNLESS OTHERWISE SHOWN ON THIS PLAT.

For the purposes of this plat the North line of the Southwest Quarter, Section 26, Township 31, Range 23, Anoka County, Minnesota, is assumed to have a bearing of N89°41'01"W.

W 1/4 corner of Section 26, Township 31, Range 23, Anoka County Cast Iron Monument

589°41'01"E 979.11

513.85 N00°19'02"E

West line of Lot 1, Block 1, Blaine Preserve Business Park Second Addition

West line of the NE 1/4 of the SW 1/4 of Section 26, Twp. 31, Rng. 23

North line of the SW 1/4 of Section 26, Township 31, Range 23

1667.97 N89°41'01"W

North line of the SW 1/4 of Section 26, Township 31, Range 23

NE corner of the SW 1/4 of Section 26, Twp. 31, Rng. 23

West line of the SW 1/4 of Section 26, Twp. 31, Rng. 23

East line of the SW 1/4 of Section 26, Twp. 31, Rng. 23

West line of the SW 1/4 of Section 26, Twp. 31, Rng. 23

East line of the SW 1/4 of Section 26, Twp. 31, Rng. 23

West line of the SW 1/4 of Section 26, Twp. 31, Rng. 23

East line of the SW 1/4 of Section 26, Twp. 31, Rng. 23

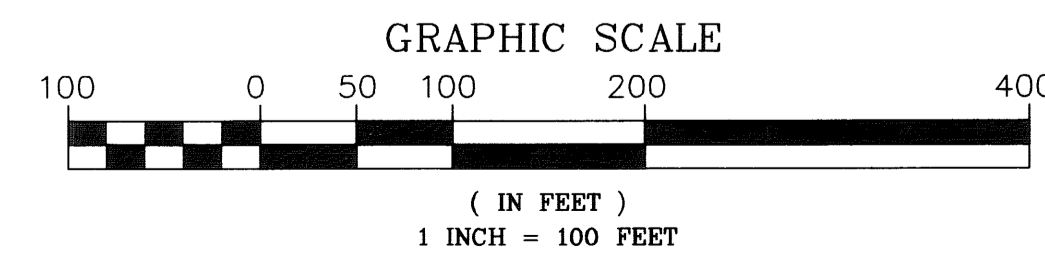
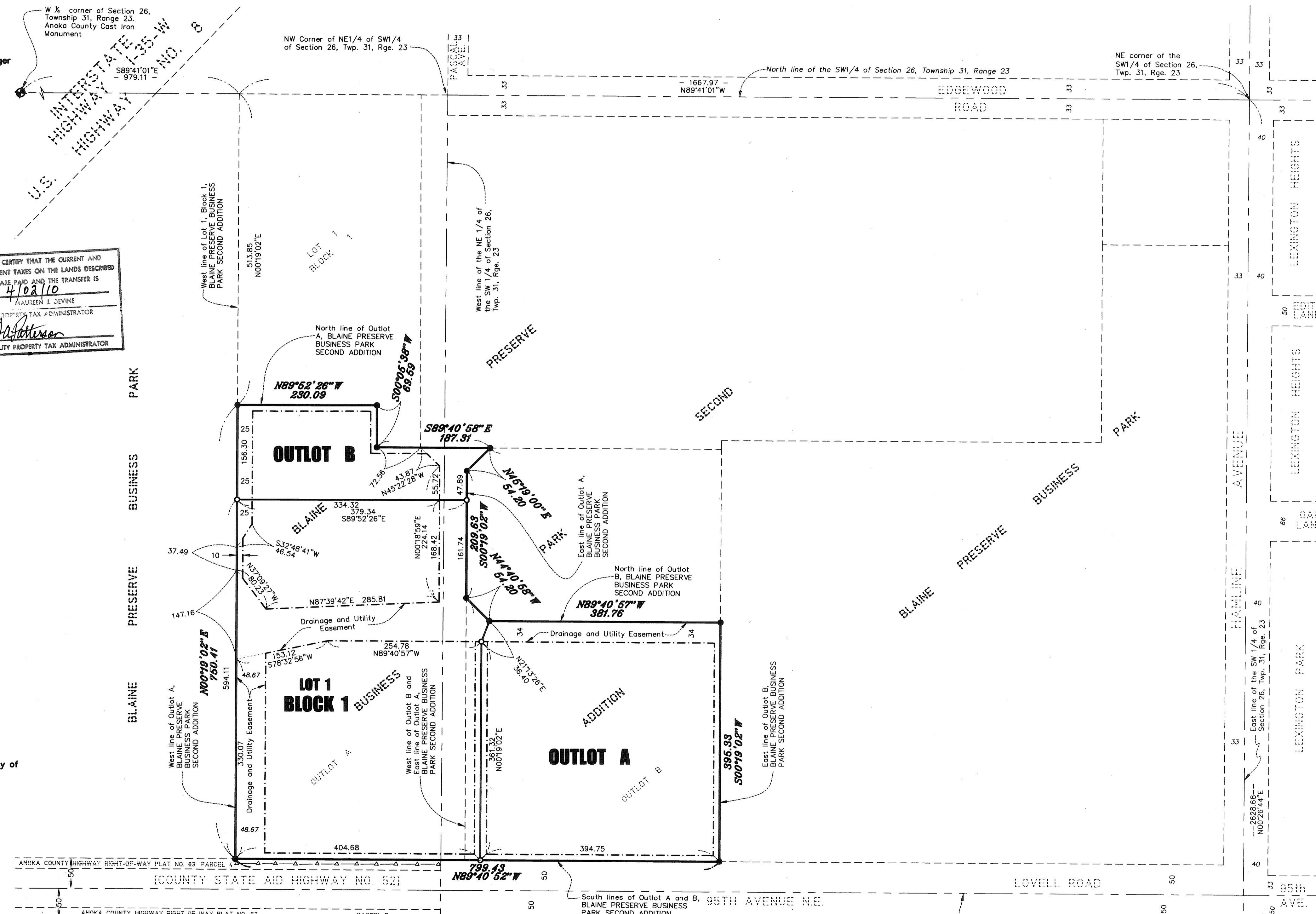
I HEREBY CERTIFY THAT THE CURRENT AND DELINQUENT TAXES ON THE LANDS DESCRIBED WITHIN ARE PAID AND THE TRANSFER IS ENTERED

4102110

MAUREEN J. DEVINE

PROPERTY TAX ADMINISTRATOR

BY Maureen J. Devine  
DEPUTY PROPERTY TAX ADMINISTRATOR



NORTH

50113.001

Office of REGISTRAR OF TITLES  
STATE OF MINNESOTA  
COUNTY OF ANOKA

I hereby certify that the within instrument was filed in this office on 4-27-10 at 11:07 o'clock AM

Maureen J. Devine, Registrar of Titles  
By JAP  
Deputy Registrar of Titles

\$ 56.00

**E. G. RUD & SONS, INC.**  
EST. 1977 Professional Land Surveyors