

# BLAINE SPRING BROOK ADDITION

CITY OF BLAINE, COUNTY OF ANOKA

BINDING

FOR

RESERVED

SPACE

THIS

KNOW ALL MEN BY THESE PRESENTS: That Good Value Homes, Inc., a Minnesota corporation, owner and proprietor, and Northwestern National Bank of Minneapolis, a United States corporation, mortgagee, of the following described property situate in the County of Anoka, State of Minnesota, to wit:

That part of the Northeast Quarter of the Northeast Quarter in Section 31, Township 31, Range 23, described as follows:

Beginning at the southeast corner of said Northeast Quarter of the Northeast Quarter; thence northerly on an assumed bearing of North 0 degrees 06 minutes 47 seconds West along the east line of said Northeast Quarter of the Northeast Quarter a distance of 697.61 feet; thence North 60 degrees 07 minutes 00 seconds West a distance of 534.01 feet; thence along a tangential curve to the left having a radius of 5592.23 feet, a delta angle of 8 degrees 28 minutes 20 seconds, a distance of 826.91 feet to a point in the north line of said Northeast Quarter of the Northeast Quarter distant 122.17 feet east from the northwest corner of said Northeast Quarter of the Northeast Quarter; thence westerly along said north line to the northwest corner of said Northeast Quarter of the Northeast Quarter; thence to the southwest corner of said Northeast Quarter of the Northeast Quarter; thence to the point of beginning.

Have caused the same to be surveyed and platted as BLAINE SPRING BROOK ADDITION and do hereby donate and dedicate to the public for the public use forever the Avenues, Streets, Circle, and the drainage and utility easements as shown on the plat. In witness whereof said Good Value Homes, Inc. has caused these presents to be signed by its proper officers and its corporate seal to be hereunto affixed this 19th day of October 1978. Also, in witness whereof said Northwestern National Bank of Minneapolis has caused these presents to be signed by its proper officer and its corporate seal to be hereunto affixed this 18th day of October 1978.

Good Value Homes, Inc.:

Donald L. Hardle  
Donald L. Hardle, President

Betty R. Hardle  
Betty R. Hardle, Secretary-Treasurer

Northwestern National Bank of Minneapolis:

R. D. Schneider  
R. D. Schneider, its Vice-President

State of Minnesota) County of Anoka) The foregoing instrument was acknowledged before me this 19th day of OCTOBER 1978 by Donald L. Hardle, President, and Betty R. Hardle, Secretary-Treasurer, of Good Value Homes, Inc., a Minnesota corporation, on behalf of the corporation.

Lois H. Caswell  
LOIS H. CASWELL  
NOTARY PUBLIC - MINNESOTA  
HENNEPIN COUNTY  
My Commission Expires Oct. 17, 1981

Lois H. Caswell  
Notary Public, \_\_\_\_\_ County, Minnesota  
My commission expires \_\_\_\_\_

State of Minnesota) County of Hennepin) The foregoing instrument was acknowledged before me this 18th day of OCTOBER 1978 by R.D. SCHNEIDER, Vice-President of Northwestern National Bank of Minneapolis, a United States corporation, on behalf of the corporation.

John N. Peterson  
JOHN N. PETERSON  
NOTARY PUBLIC - MINNESOTA  
HENNEPIN COUNTY  
My Commission Expires Oct. 22, 1981

John N. Peterson  
Notary Public, \_\_\_\_\_ County, Minnesota  
My commission expires \_\_\_\_\_

I hereby certify that I have surveyed and platted the property described on this plat as BLAINE SPRING BROOK ADDITION; that this plat is a correct representation of said survey; that all distances are correctly shown in feet and hundredths of a foot; that all monuments have been correctly placed in the ground as shown; that the outside boundary lines are correctly designated; and that there are no wet lands to be designated on said plat.

Richard H. Cherrier  
Richard H. Cherrier  
Land Surveyor, Minnesota Reg. No. 9064

State of Minnesota) County of Hennepin) The foregoing instrument was acknowledged before me this 18th day of October 1978 by Richard H. Cherrier, Land Surveyor.

Donald E. Shuman  
DONALD E. SHUMAN  
NOTARY PUBLIC - MINNESOTA  
HENNEPIN COUNTY  
My Commission Expires Oct. 20, 1981

Donald E. Shuman  
Notary Public, Hennepin County, Minnesota  
My commission expires October 20, 1981

BLAINE, MINNESOTA

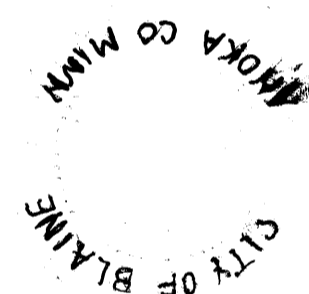
This plat was approved and accepted by the City Council of the City of Blaine, Minnesota at a regular meeting thereof held this 19th day of October 1978.

Francis Hogarty, Mayor  
Frank L. Nye, Manager  
CITY COUNCIL OF THE CITY OF BLAINE, MINNESOTA

ANOKA COUNTY SURVEYOR

This plat was checked and approved on this 10th day of January 1979.

Robert W. Anderson  
County Surveyor, Anoka County, Minnesota

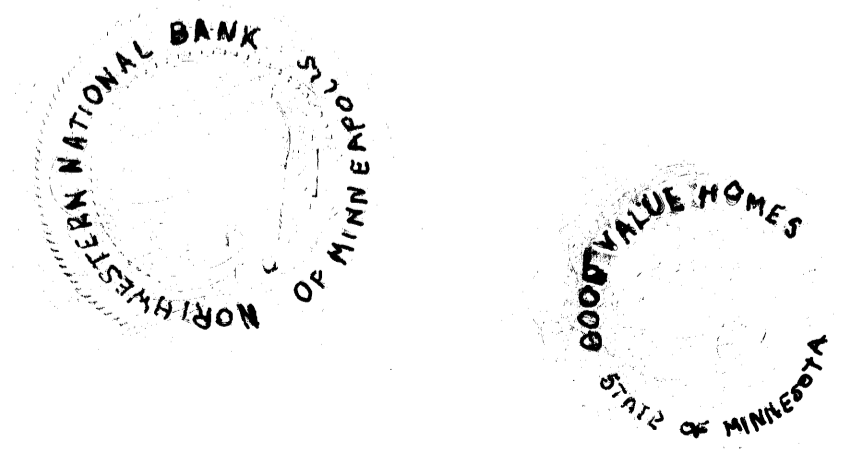


517245

OFFICE OF COUNTY RECORDER  
STATE OF MINNESOTA, COUNTY OF ANOKA  
I hereby certify that the within instrument was filed in this office for record on the JAN 11 1979 A.D., 1979 at 2:40 o'clock P.M., and was duly recorded in book 29 of PLATS page 35

Richard J. Oudahl  
County Recorder  
By R. E. Halverson  
Deputy

NO DELINQUENT FEES AND TRANSFER ENTRIES  
Jan 11 1979  
Charles R. Johnson  
Auditor, Anoka County  
By R. E. Halverson  
Deputy



CHERRIER - WINTER & ASSOCIATES, INC.

REGISTERED PROFESSIONAL LAND SURVEYORS

ACR006520 JAN 11 19 2009

SHEET 1 OF 2 SHEETS

# BLAINE SPRING BROOK ADDITION

CITY OF BLAINE, COUNTY OF ANOKA

NW corner of NE 1/4, NE 1/4, Sec. 31, T.31, R.23

NE corner of NE 1/4, NE 1/4, Sec. 31, T.31, R.23 Anoka Co. Man.

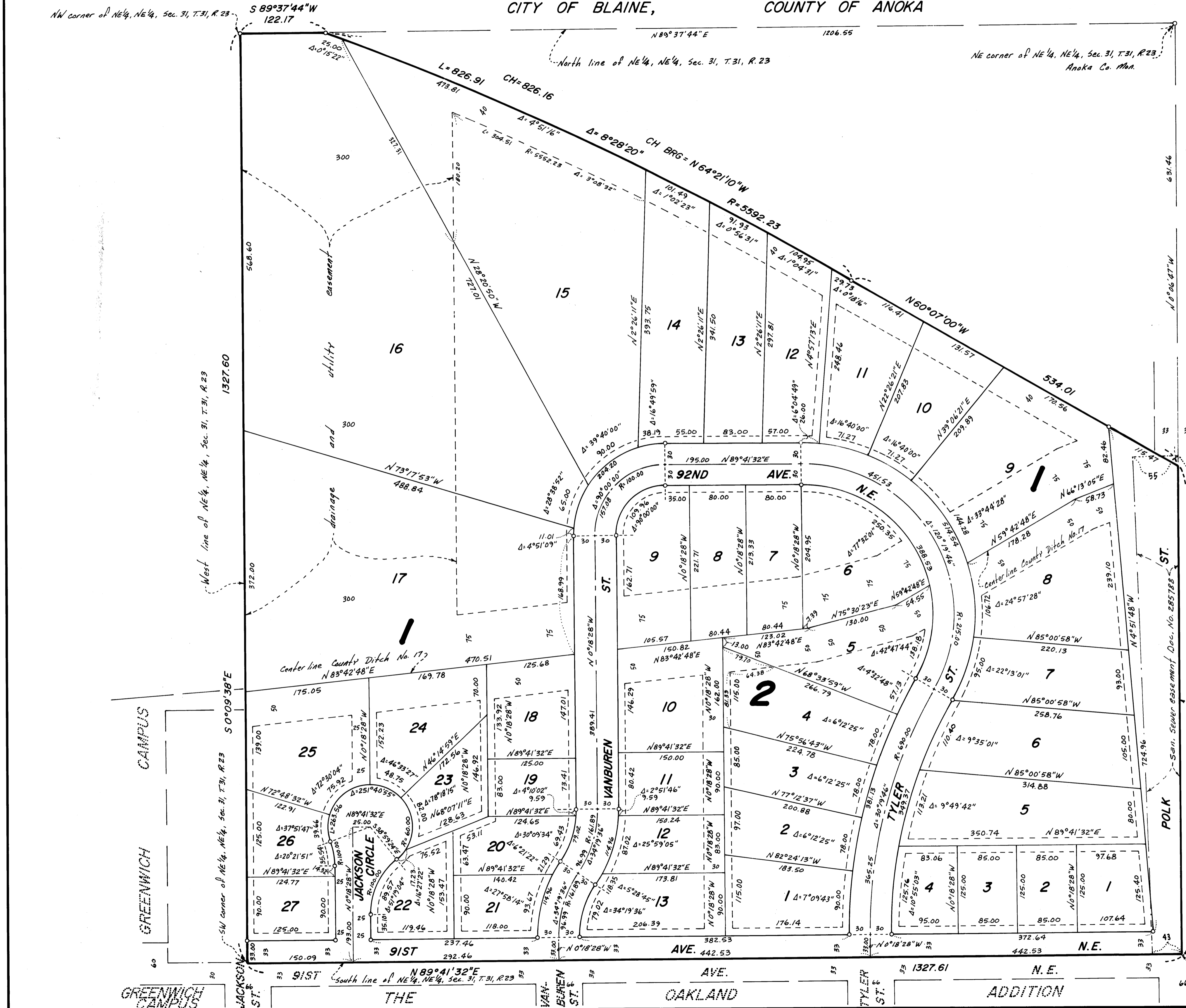
BINDING

FOR

RESERVED

SPACE

THIS

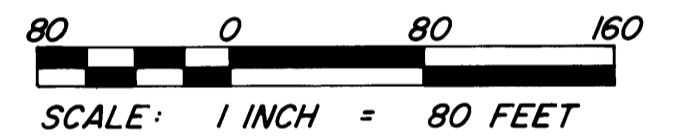


NO DELINQUENT TAXES AND TRANSFER ENTERED

Jan 11 1979

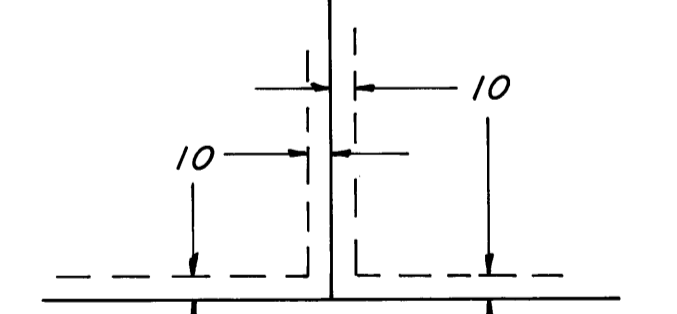
Charles R. Pflieger  
Auditor, Anoka County

BY P.L. Kaminski  
Deputy



○ DENOTE IRON MONUMENT BEARINGS SHOWN ARE ASSUMED

DRAINAGE AND UTILITY EASEMENTS ARE SHOWN THUS:



**CHERRIER-WINTER & ASSOCIATES, INC.**  
REGISTERED PROFESSIONAL LAND SURVEYORS

SE corner of NE 1/4, NE 1/4, Sec. 31, T.31, R.23