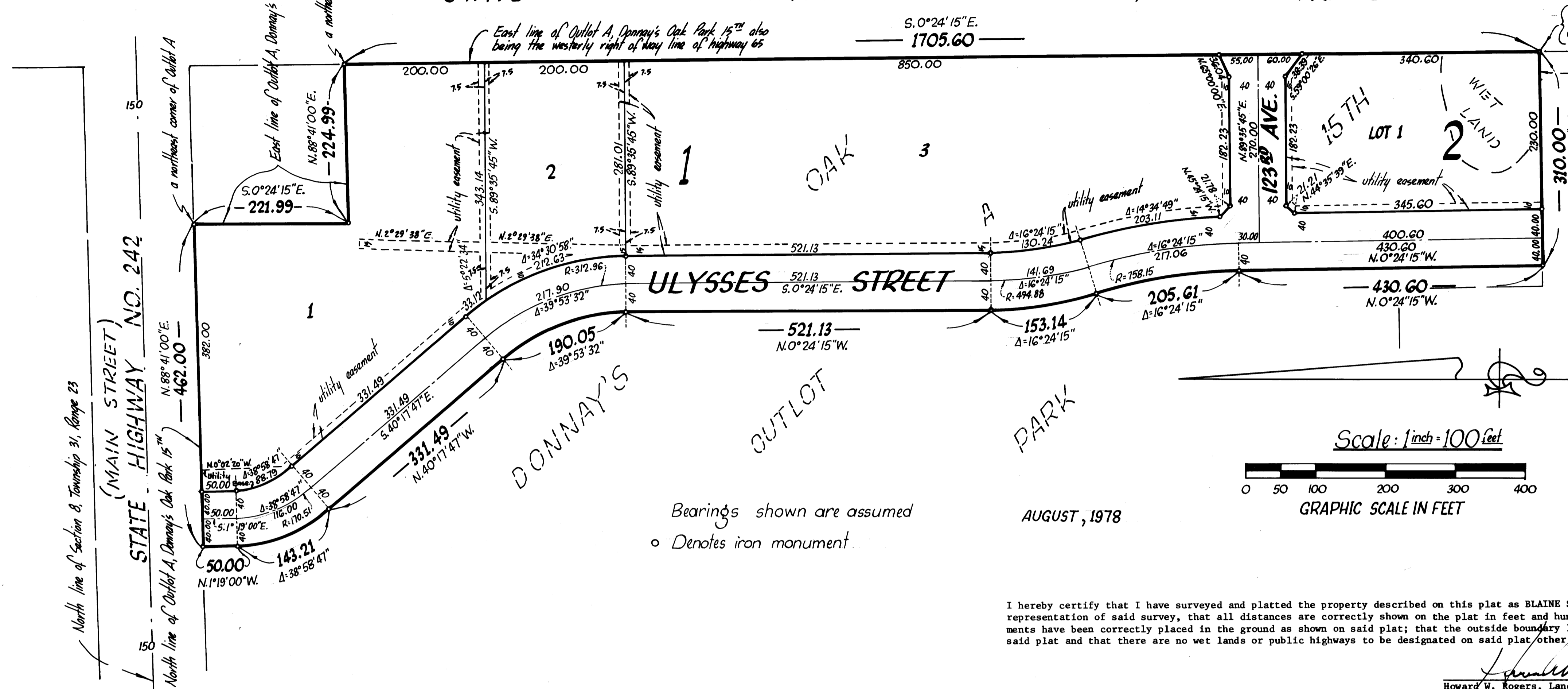


BLAINE SQUARE

CITY OF BLAINE ANOKA COUNTY

STATE TRUNK HIGHWAY NO. 65



Office of REGISTRAR OF TITLES
STATE OF MINNESOTA
COUNTY OF ANOKA

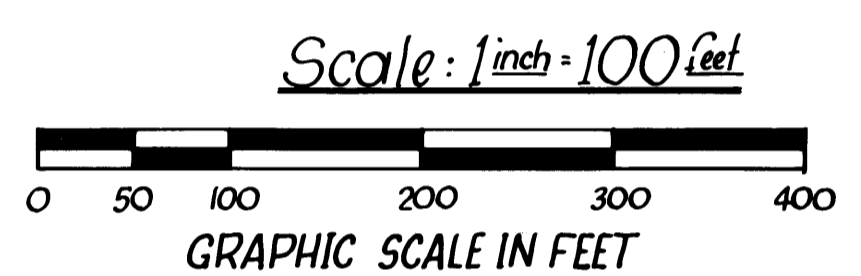
I hereby certify that the within instrument was filed in this office on the 24 day of JAN A.D. 1979 at 11 o'clock A.M.

Richard J. Schreier
Deputy Registrar of Titles

103463

(Southeast corner of Outlot A, Donnay's Oak Park 15th)

Most southerly line of Outlot A, Donnay's Oak Park 15th



UBURBAN ENGINEERING, INC.
— Engineers —
— Surveyors —

Bearings shown are assumed
o Denotes iron monument

AUGUST, 1978

I hereby certify that I have surveyed and platted the property described on this plat as BLAINE SQUARE; that this plat is a correct representation of said survey, that all distances are correctly shown on the plat in feet and hundredths of a foot; that all monuments have been correctly placed in the ground as shown on said plat; that the outside boundary lines are correctly designated on said plat and that there are no wet lands or public highways to be designated on said plat other than as shown thereon.

Howard W. Rogers
Howard W. Rogers, Land Surveyor, Minnesota Reg. No. 10945

STATE OF MINNESOTA The foregoing instrument was acknowledged before me this 16th day of January, 1979 by Howard COUNTY OF ANOKA W. Rogers, Land Surveyor.

Marietta L. Zuehlke
Notary Public, Anoka County, Minnesota
My Commission Expires APR. 14, 1984

We hereby certify that the City Council of the City of Blaine, Anoka County, Minnesota duly accepted and approved this plat of BLAINE SQUARE at a regular meeting thereof held this 19th day of October, 1978.

CITY COUNCIL OF BLAINE, MINNESOTA
By *Francis Property* Mayor
By *Richard J. Schreier* Mayor

Checked and approved this 23rd day of January, 1979
Robert W. Anderson
Anoka County Surveyor

KNOW ALL MEN BY THESE PRESENTS: That Highway 65 Associates, a partnership under the laws of the State of Minnesota, owner and proprietor of the following described property situated in the County of Anoka, State of Minnesota to wit:
That part of Outlot A, Donnay's Oak Park 15th described as follows: Beginning at a northeast corner of said Outlot A, said corner being on the westerly right of way line of State Highway No. 65; thence on an assumed bearing of S 0°24'15" E, along the east line of said Outlot A, to the southeast corner of said Outlot A; thence S 89°35'45" W, along the south line of said Outlot A, 310.00 feet; thence N 0°24'15" W, 430.60 feet; thence on a tangential curve to the left for a distance of 205.61 feet, radius of said curve is 718.15 feet; thence on a reverse curve a distance of 153.14 feet, radius of said curve is 534.88 feet; thence N 0°24'15" W, tangent to last described curve, 521.13 feet; thence on a tangential curve to the left a distance of 190.05 feet, radius of said curve is 272.96 feet; thence N 40°17'47" W, tangent to last described curve, 331.49 feet; thence on a tangential curve to the right a distance of 143.21 feet, radius of said curve is 210.51 feet; thence N 1°19'00" W, tangent to last described curve, 50.00 feet to the north line of said Outlot A; thence N 88°41'00" E, along said north line, 462.00 feet to a northeast corner of said Outlot A; thence S 0°24'15" E, along the east line of said Outlot A, 221.99 feet to an angle point in said east line; thence N 88°41'00" E, along said east line, 224.99 feet to the point of beginning;

has caused the same to be surveyed and platted as BLAINE SQUARE and does hereby donate and dedicate to the public for public use forever the avenue, street and utility easements as shown on this plat. In witness whereof said Highway 65 Associates has caused these presents to be signed by Richard J. Schreier, partner, this 23rd day of January, 1979.

HIGHWAY 65 ASSOCIATES, A PARTNERSHIP
Richard J. Schreier
Richard J. Schreier, partner

STATE OF MINNESOTA The foregoing instrument was acknowledged before me this 23rd day of January, 1979 by Richard J. COUNTY OF ANOKA Schreier, partner of Highway 65 Associates, a partnership under the laws of the State of Minnesota, on behalf of the partnership.

Marietta L. Zuehlke
Notary Public, Anoka County, Minnesota
My Commission Expires APR. 14, 1984

"NO DELINQUENT TAXES AND TRANSFER ENTERED"
Jan 23 1979
Charles R. O'Brien
Auditor, Anoka County
By *R. O'Brien* Deputy