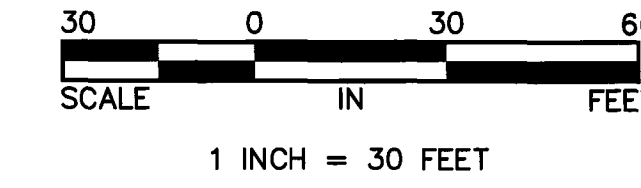
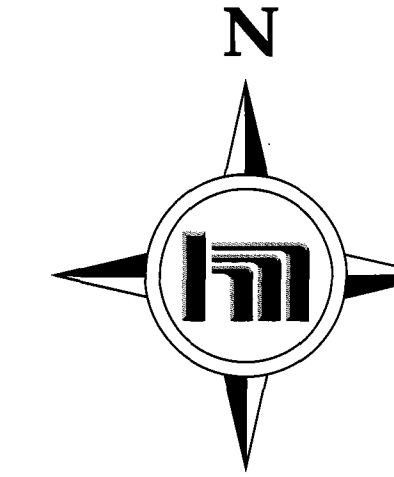


BOB EHLEN PARK

CITY OF ANOKA
COUNTY OF ANOKA
SEC. 2, T. 31, R. 25



- Denotes 1/2 inch by 14 inch iron monument set and marked with Minnesota License No. 18420.
- Denotes found iron monument
- (100.00) Denotes record distance

For the purposes of this plat the East line of Block 2, BARTLEY ADDITION is assumed to bear N00°05'51"E.

KNOW ALL PERSONS BY THESE PRESENTS: That the City of Anoka, a Minnesota Municipal Corporation under the laws of the State of Minnesota, owner of the following described property:

Lots 1, 2, 3, and 4, Block 2, BARTLEY ADDITION, Anoka County, Minnesota.

Has caused the same to be surveyed and platted as BOB EHLEN PARK and does hereby dedicate to the public for public use the park as shown on this plat.

In witness whereof said City of Anoka, a Minnesota Municipal Corporation under the laws of the State of Minnesota, has caused these presents to be signed by its proper officers this 17th day of August, 2017.

CITY OF ANOKA

Phil Rice, as Mayor

Amy T. Oehlers, as City Clerk

STATE OF Minnesota

COUNTY OF Anoka

This instrument was acknowledged before me this 17th day of August, 2017 by Phil Rice, as Mayor, and Amy T. Oehlers, as City Clerk, of the City of Anoka, a Minnesota Municipal Corporation under the laws of the State of Minnesota, on behalf of the corporation.

Pam C. Bowman

Pam C. Bowman

Notary Public, Minnesota

My commission expires Jan. 31, 2020

I Charles R. Christopherson do hereby certify that this plat was prepared by me or under my direct supervision; that I am a duly Licensed Land Surveyor in the State of Minnesota; that this plat is a correct representation of the boundary survey; that all mathematical data and labels are correctly designated on this plat; that all monuments depicted on this plat have been, or will be correctly set within one year; that all water boundaries and wet lands, as defined in Minnesota Statutes, Section 505.01, Subd. 3, as of the date of this certificate are shown and labeled on this plat; and all public ways are shown and labeled on this plat.

Dated this 20th day of July, 2017.

Charles R. Christopherson

Charles R. Christopherson, Licensed Land Surveyor
Minnesota License No. 18420

STATE OF MINNESOTA
COUNTY OF ANOKA

This instrument was acknowledged before me this 20th day of July, 2017 by Charles R. Christopherson.

Seth M. Monroe

Seth M. Monroe

Notary Public, Minnesota.

My commission expires January 31, 2019

City Council, City of Anoka, Minnesota

This plat of BOB EHLEN PARK was approved and accepted by the City Council of the City of Anoka, Minnesota at a regular meeting thereof held this 17th day of July, 2017, and said plat is in compliance with the provisions of Minnesota Statutes, Section 505.03, Subd. 2.

City Council, City of Anoka, Minnesota

By: Phil Rice, Mayor

By: Amy T. Oehlers, Clerk

Anoka Planning Commission

Be it known that at a meeting held on this 6th day of June, 2017, the Planning Commission of the City of Anoka, Minnesota, did hereby review and approve this plat of BOB EHLEN PARK.

Planning Commission, City of Anoka, Minnesota

By: Albert Johnson, Chairperson

By: J. J. [Signature], Secretary

ANOKA COUNTY SURVEYOR

I hereby certify that in accordance with Minnesota Statutes, Section 505.021, Subd. 11, this plat has been reviewed and approved this 21st day of August, 2017.

Larry D. Holub

Larry D. Holub,
Anoka County Surveyor

ANOKA COUNTY AUDITOR/TREASURER

Pursuant to Minnesota Statutes, Section 505.021, Subd. 9, taxes payable in the year 2017 on the land hereinbefore described have been paid. Also, pursuant to Minnesota Statutes, Section 272.12, there are no delinquent taxes and transfer entered this 21st day of August, 2017.

Jonell M. Sawyer

Property Tax Administrator

By: [Signature], Deputy

ANOKA COUNTY RECORDER/REGISTRAR OF TITLES

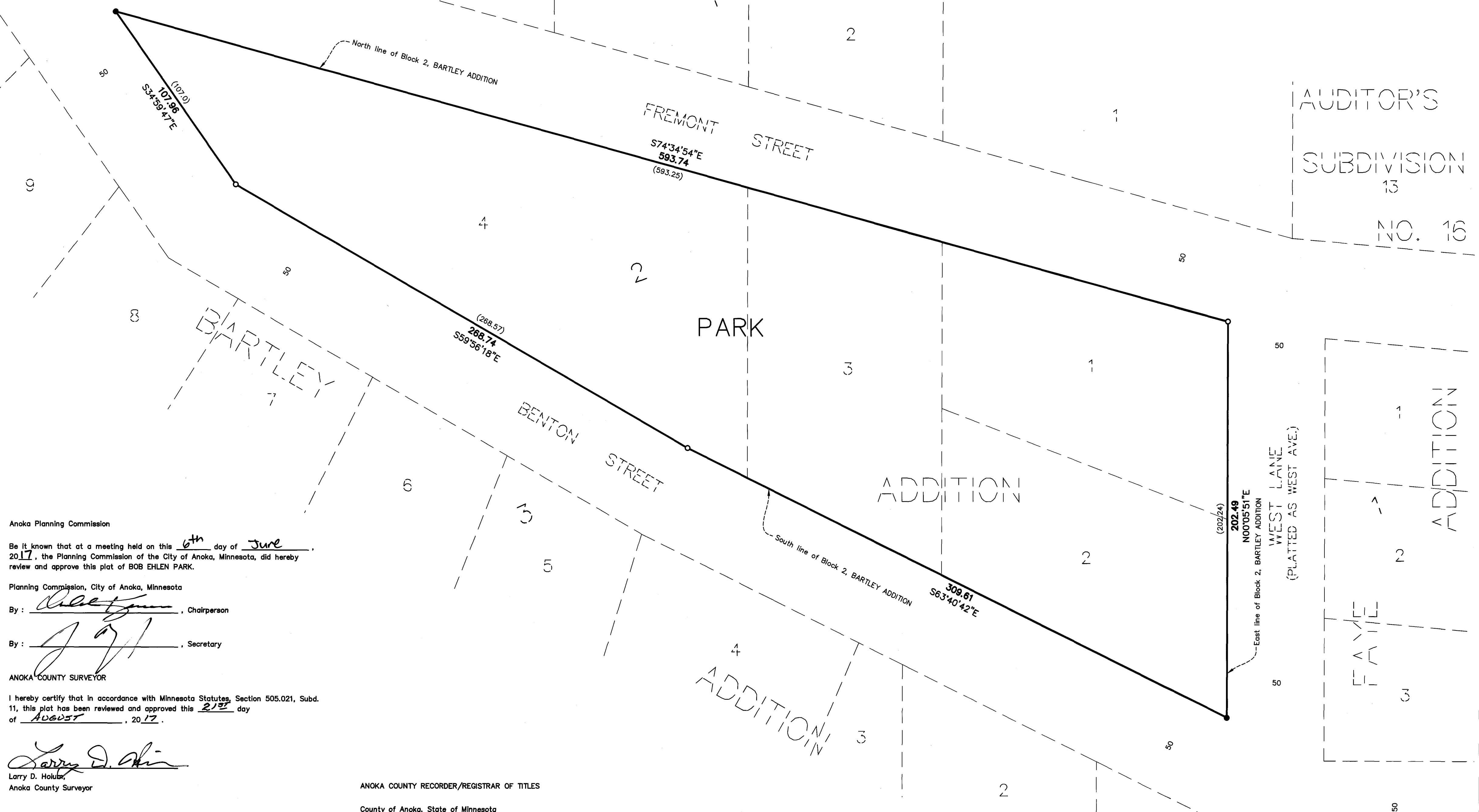
County of Anoka, State of Minnesota

I hereby certify that this plat of BOB EHLEN PARK was filed in the office of the County Recorder/Registrar of Titles for public record on this 21st day of August, 2017, at 10:51 o'clock A.M. and was duly recorded in Book N/A, Page N/A, as Document Number 218923.003.

Jonell M. Sawyer

County Recorder/Registrar of Titles

By: [Signature], Deputy



AUDITOR'S
SUBDIVISION
13
NO. 16

ADDITION
1
2
3

MISSISSIPPI
TERRACE