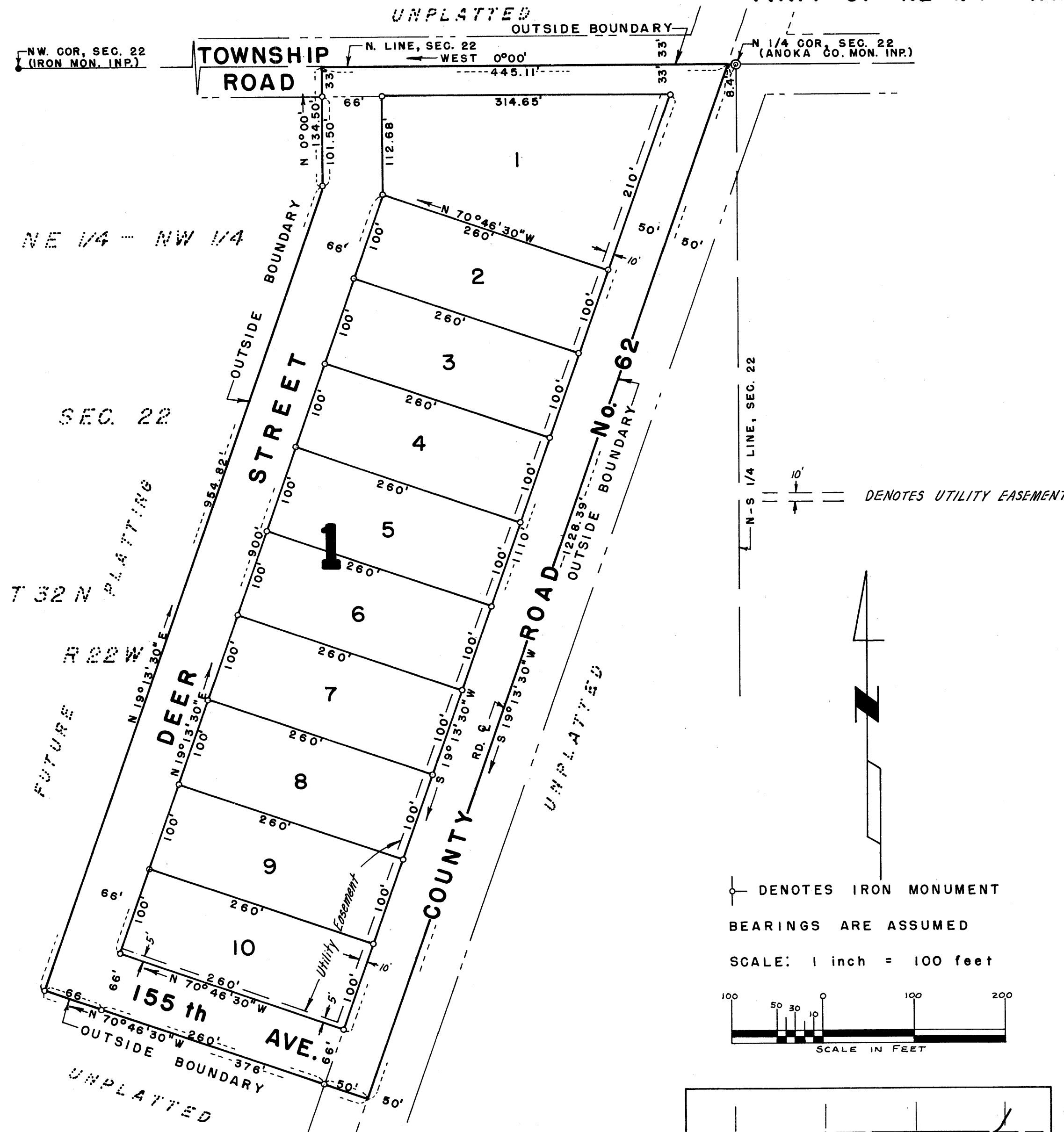


BOEHM'S CORNER

COLUMBUS TOWNSHIP, ANOKA COUNTY, MINNESOTA

PART OF NE 1/4 - NW 1/4 OF SEC. 22, T 32 N, R 22 W



THIS IS TO CERTIFY that Maurice F. Boehm and Cora I. Boehm, husband and wife, owners of the following described property situated in Columbus Township, Anoka County, Minnesota:

All that part of the Northeast quarter of the Northwest quarter of Section 22, Township 32 North, Range 22 West, Anoka County, Minnesota, described as follows:

Commencing at the north quarter corner of said Section 22; thence West 0°00', along the north line of said Section 22, 8.4 feet to the point of beginning of the point of intersection thereof with the center line of County Road No. 62; thence S 19°13'30"W, along said road center line, 1228.39 feet; thence N 70°46'30"W, 376 feet; thence N 19°13'30"E, 954.82 feet; thence North 0°00', 134.5 feet to the point of intersection thereof with the north line of said Section 22; thence East 0°00', along said north line, 445.11 feet to the point of beginning, containing 10.1 acres, more or less, and subject to County Road No. 62 along the easterly line thereof.

Also subject to the existing Township Road along the north line thereof and the utility easements as shown on the annexed plat.

HEREBY CERTIFY that they have caused the same to be surveyed and platted as BOEHM'S CORNER, in Columbus Township, Anoka County, Minnesota, and do hereby donate and dedicate to the public for public use forever, Deer Street, 155th Avenue, 33 feet for half the Township Road along the north line thereof and 50 feet for half of County Road No. 62 along the easterly line thereof, as shown on the annexed plat.

IN WITNESS WHEREOF: We have hereunto set our hands and seal this 9th day of AUGUST, 1966.

Signed: Maurice F. Boehm In presence of William A. Hult
 Maurice F. Boehm Witness
Cora I. Boehm Don C. Hult
 Cora I. Boehm Witness

STATE OF MINNESOTA } SS On this 9th day of AUGUST, 1966, before me a Notary Public, within and for said County and State, personally appeared Maurice F. Boehm and Cora I. Boehm, to me known to be the persons described herein and who executed the foregoing instrument and acknowledge that they executed the same as their own free act and deed.

Don E. Hansen
 Notary Public, Chisago County, Minnesota
 My Commission Expires Dec. 7, 1972

I, Don C. Hult, hereby certify that I have surveyed and platted the land described in the dedication on this sheet as BOEHM'S CORNER; that this plat is a correct representation of said survey; that all courses, distances, and bearings are correctly shown on the plat; that the outside boundaries are correctly designated; that the monuments for the guidance of future surveys have been correctly placed in the ground at all lot corners; and that there are no wet lands, easements, or public highways to be designated on the plat other than as shown thereon.

Don C. Hult
 Don C. Hult, Minnesota Registered Land Surveyor
 Registration No. 6617

STATE OF MINNESOTA } SS The above certificate subscribed and sworn to by Don C. Hult, before me a Notary Public, within and for said County and State on this 9th day of AUGUST, 1966.

Don E. Hansen
 Notary Public, Chisago County, Minnesota
 My Commission Expires Dec. 7, 1972

The annexed plat of BOEHM'S CORNER was approved by the Planning and Zoning Commission and by the Town Board of the Township of Columbus at a regular meeting held this 10th day of August, 1966.

John E. Hood Chairman of Town Board
Burgund E. Fuchsel Clerk of Town Board

Checked and approved this 13th day of SEPT., 1966.

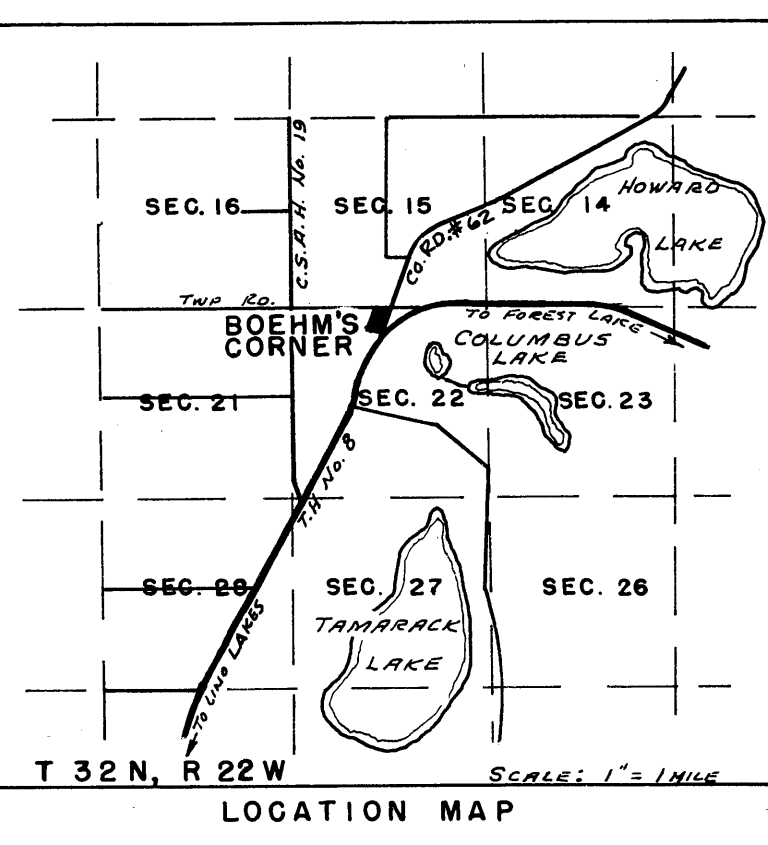
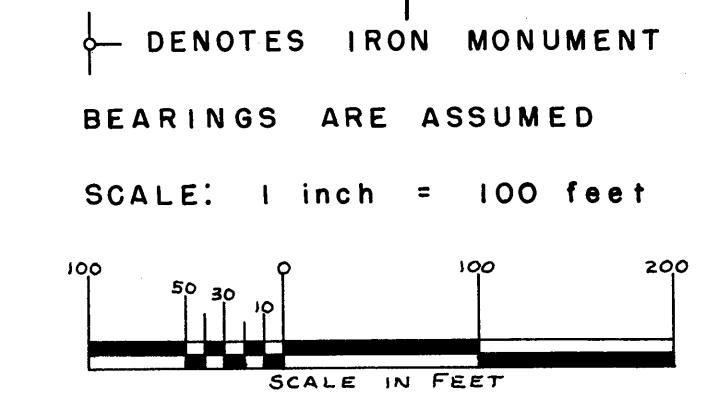
Robert W. Anderson Anoka County Surveyor
 This plat was approved as to form and execution on this 24th day of JANUARY, 1968.

Recommended for approval this 13th day of Sept., 1966.

Erling A. Lundheim Anoka County Highway Engineer
Robert E. Johnson Anoka County Attorney

This plat was approved and accepted by the Board of County Commissioners of the County of Anoka, State of Minnesota, at a regular meeting held this 13th day of Sept., 1966.

Robert E. Bendish Chairman
Kenneth W. Campbell County Auditor



DON C. HULT
 LAND SURVEYOR
 JULY, 1966

307108

OFFICE OF REGISTER OF DEEDS
 STATE OF MINNESOTA, COUNTY OF ANOKA

I hereby certify that the within instrument was filed in this office for record on the _____ day of _____, 1966, at _____ o'clock _____ M., and was duly recorded in Book _____ of Plat, page _____.

Ed G. Omdahl
 By A. Diana Swanson, Deputy

TAXES PAID
 This 28th day of Feb. 1968
Kenneth W. Campbell
 Auditor, Anoka County, Minn.
Deane O'Connell
 Deputy

1 MONTHLY CLERK FEE AND THE TAXES PAYABLE IN THE YEAR 1968 ON THE LANDS DESCRIBED WITHIN ARE PAID
Robert A. Johnson
 Anoka County Treasurer

