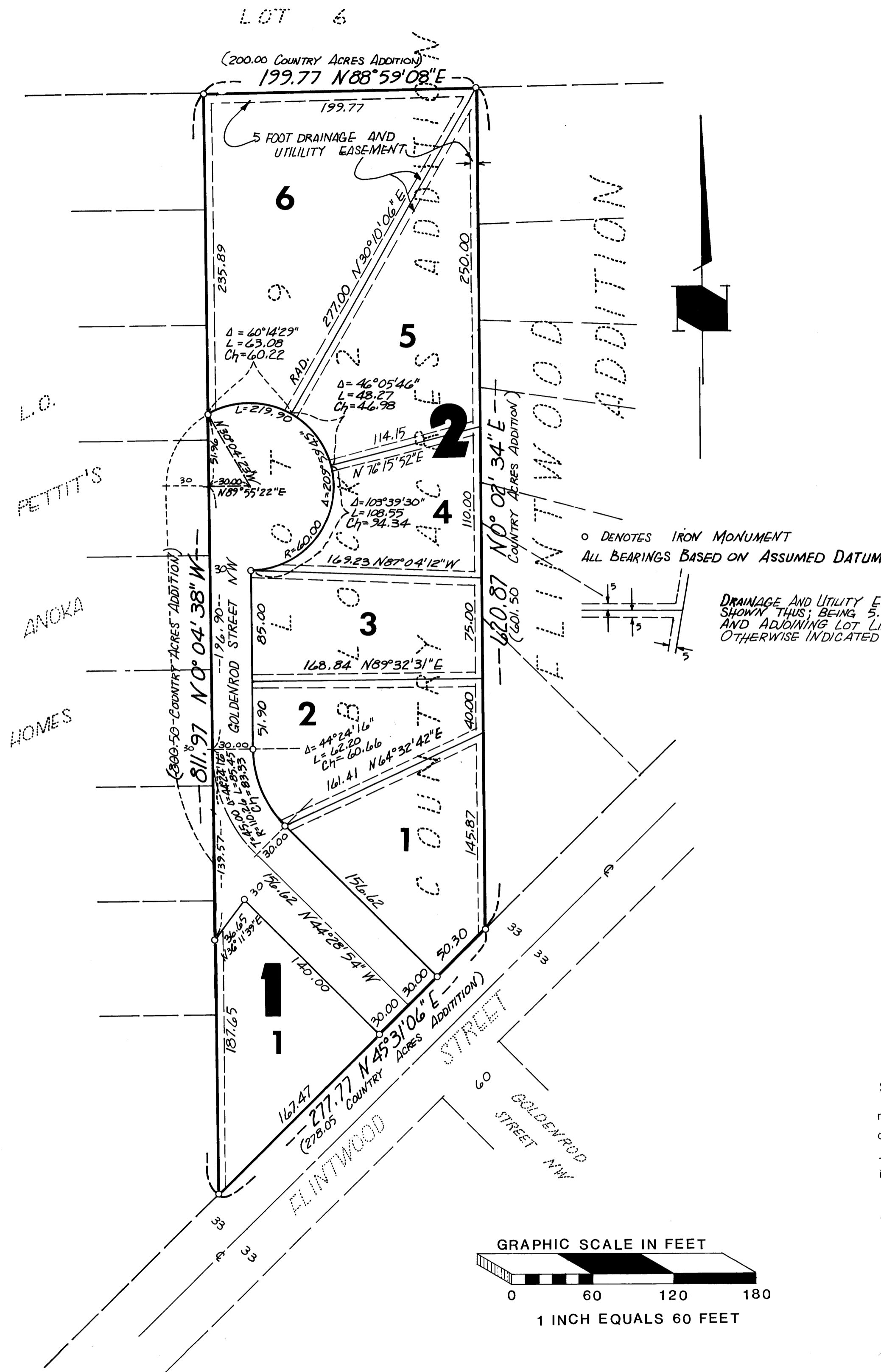


Braun

CONSULTING ENGINEERS DIVERSIFIED INC.
CITY OF COON RAPIDS

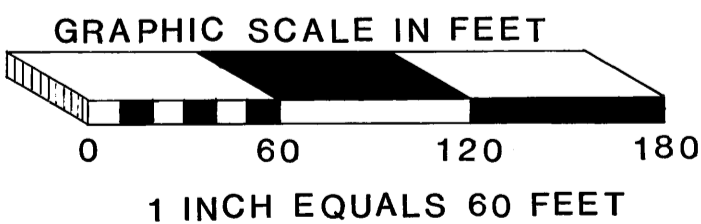
Addition

ENGINEERING AND LAND SURVEYING
COUNTY OF ANOKA



DRAINAGE AND UTILITY EASEMENTS ARE SHOWN, THIS BEING 5.0 FEET IN WIDTH AND ADJOINING LOT LINES, UNLESS OTHERWISE INDICATED ON THE PLAT.

○ DENOTES IRON MONUMENT
ALL BEARINGS BASED ON ASSUMED DATUM



483766

OFFICE OF COUNTY RECORDER
STATE OF MINNESOTA, COUNTY OF ANOKA
I hereby certify that the within instrument was filed in this office for record on the NOV 22 1977 A.D., 1977 at 11 o'clock A.M., and was duly recorded in book 25 of PLATS page 2

Ted J. Amundahl
County Recorder
By V. J. Hallenbeck
Deputy

"NO DELINQUENT TAXES AND TRANSFER ENTERED"

Nov 22 1977
Charles P. Johnson
Auditor, Anoka County

BY J. L. Henneman

KNOW ALL MEN BY THESE PRESENTS: That Ralph C. Braun and Delores A. Braun, husband and wife, owners and proprietors of the following described property situated in the County of Anoka, State of Minnesota to wit:

Lot 9, Block 2, Country Acres Addition according to the plat on file and of record in the office of the County Recorder in and for Anoka County, Minnesota.

Have caused the same to be surveyed and platted as BRAUN ADDITION and do hereby donate and dedicate to the public for public use forever the street and drainage and utility easements as shown on the plat.

In witness whereof said Ralph C. Braun and Delores A. Braun, husband and wife, have set their hands this 8th day of November, 1977.

SIGNED:

Ralph C. Braun
Ralph C. Braun

Delores A. Braun
Delores A. Braun

STATE OF MINNESOTA
COUNTY OF HENNEPIN

The foregoing instrument was acknowledged before me this 8th day of November, 1977, by Ralph C. Braun and Delores A. Braun, husband and wife.

David S. Anderson
Notary Public, Hennepin County, Minnesota
My Commission Expires February 6, 1984

I hereby certify that I have surveyed the property described on this plat as BRAUN ADDITION, that this plat is a correct representation of the survey, that all distances are shown in feet and hundredths of a foot, that all monuments have been correctly placed in the ground as shown, that the outside boundary lines are correctly designated on the plat; and that there are no wetlands to be designated on this plat, other than shown thereon.

Harold R. Olson
Harold R. Olson, Land Surveyor
Minnesota Registration No. 2039

STATE OF MINNESOTA
COUNTY OF HENNEPIN

The foregoing instrument was acknowledged before me this 26th day of September, 1977 by Harold R. Olson, Land Surveyor.

David S. Anderson
Notary Public, Hennepin County, Minnesota
My Commission Expires Feb 6, 1984

PLANNING COMMISSION
COON RAPIDS, MINNESOTA

This plat of BRAUN ADDITION was approved by the Planning Commission of the City of Coon Rapids, Minnesota at a regular meeting thereof held this 19 day of MAY, 1977.

Donald H. Olson, Chairman
William J. McLean Jr., Secretary

CITY COUNCIL
COON RAPIDS, MINNESOTA

This plat of BRAUN ADDITION was approved and accepted by the City Council of the City of Coon Rapids, Minnesota at a regular meeting thereof held this 20 day of SEPT., 1977.

CITY COUNCIL OF COON RAPIDS, MINNESOTA
George J. Hentsch, Mayor
Betty Bell, cmc, Clerk

ANOKA COUNTY SURVEYOR

This plat was checked and approved on this 22nd day of November, 1977.

Robert W. Anderson
County Surveyor
Anoka County, Minnesota