

BRAZINSKY ADDITION

552638.001

City of Ham Lake
County of Anoka
Sec. 34, T32, R23

KNOW ALL PERSONS BY THESE PRESENTS: That Scott J. Brazinsky and Kari Brazinski, husband and wife, owners of the following described property:

Tract A, REGISTERED LAND SURVEY NO. 223, Anoka County, Minnesota.

Have caused the same to be surveyed and platted as BRAZINSKY ADDITION and do hereby dedicate to the public for public use the drainage and utility easements as shown by this plat. Also dedicating to the County of Anoka the right of access onto County State Aid Highway No. 116 as shown on this plat.

In witness whereof said Scott J. Brazinsky and Kari Brazinski, husband and wife, have hereunto set their hands this 26th day of September, 2017.

Scott J. Brazinsky
Scott J. Brazinsky
Kari B. Brazinsky
Kari Brazinsky

STATE OF MINNESOTA
COUNTY OF Anoka

This instrument was acknowledged before me this 20th day of September, 2017 by Scott J. Brazinsky and Kari Brazinski, husband and wife.

Nicole A. Johnson
Nicole A. Johnson
Notary Public, Anoka County, Minnesota
My Commission Expires January 31, 2020

I Jason E. Rud do hereby certify that this plat was prepared by me or under my direct supervision; that I am a duly Licensed Land Surveyor in the State of Minnesota; that this plat is a correct representation of the boundary survey; that all mathematical data and labels are correctly designated on this plat; that all monuments depicted on this plat have been, or will be correctly set within one year; that all water boundaries and wet lands, as defined in Minnesota Statutes, Section 505.01, Subd. 3, as of the date of this certificate are shown and labeled on this plat; and all public ways are shown and labeled on this plat.

Dated this 25th day of SEPTEMBER, 2017.

Jason E. Rud
Jason E. Rud, Licensed Land Surveyor
Minnesota License No. 41578

STATE OF MINNESOTA
COUNTY OF Anoka

This instrument was acknowledged before me this 25th day of September, 2017 by Jason E. Rud.

Nicole A. Johnson
Nicole A. Johnson
Notary Public, Anoka County, Minnesota
My Commission Expires January 31, 2020

City Council, City of Ham Lake, Minnesota

This plat of BRAZINSKY ADDITION was approved and accepted by the City Council of the City of Ham Lake, Minnesota at a regular meeting thereof held this 2nd day of October, 2017, and said plat is in compliance with the provisions of Minnesota Statutes, Section 505.03, Subd. 2.

City Council, City of Ham Lake, Minnesota

By Denise L. Van Kirk Mayor
By Denise L. Van Kirk Clerk

County Surveyor

I hereby certify that, in accordance with Minnesota Statutes, Section 505.021, Subd. 11, this plat has been reviewed and approved this 4th day of October, 2017.

Larry D. Holm by Charles F. Setzer, Deputy
Larry D. Holm
Anoka County Surveyor

County Auditor/Treasurer

Pursuant to Minnesota Statutes, Section 505.021, Subd. 9, taxes payable in the year 2017 on the land hereinbefore described have been paid. Also, pursuant to Minnesota Statutes, Section 272.12, there are no delinquent taxes and transfer entered this 3 day of November, 2017.

Jonnell M. Sawyer
Jonnell M. Sawyer
Property Tax Administrator
By Jonnell M. Sawyer Deputy

County Recorder/Registrar of Titles
County of Anoka, State of Minnesota

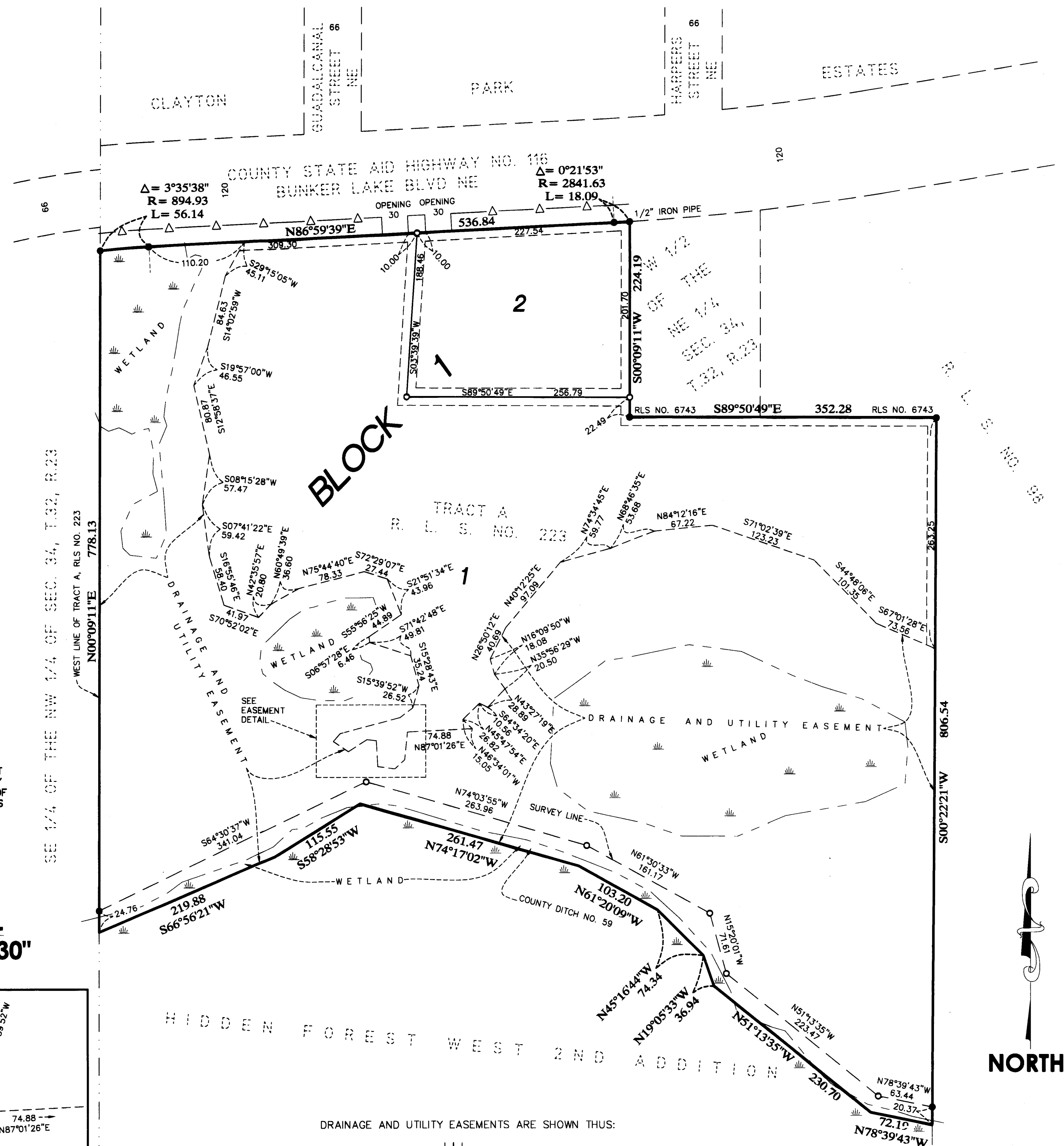
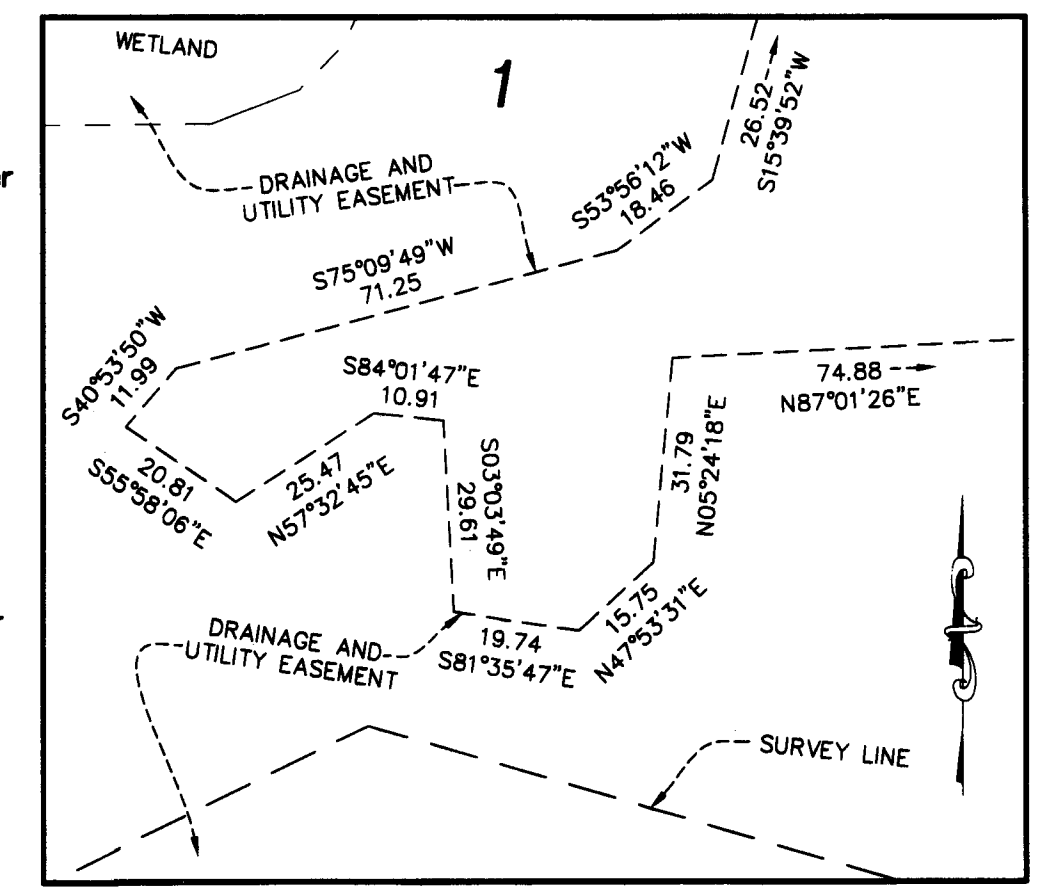
I hereby certify that this plat of BRAZINSKY ADDITION was filed in the office of the County Recorder/Registrar of Titles for public record on this 3 day of November, 2017, at 10:24 o'clock P.M. and was duly recorded as Document Number 552638.001.

Jonnell M. Sawyer
Jonnell M. Sawyer
County Recorder/Registrar of Titles
By Jonnell M. Sawyer Deputy

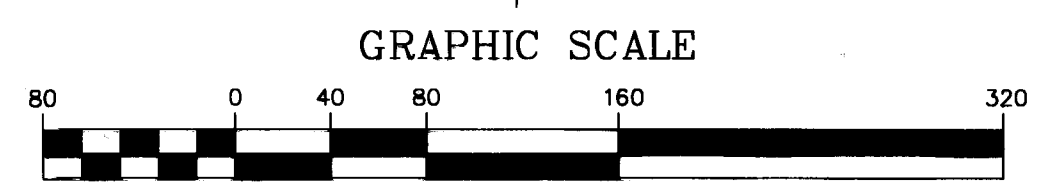
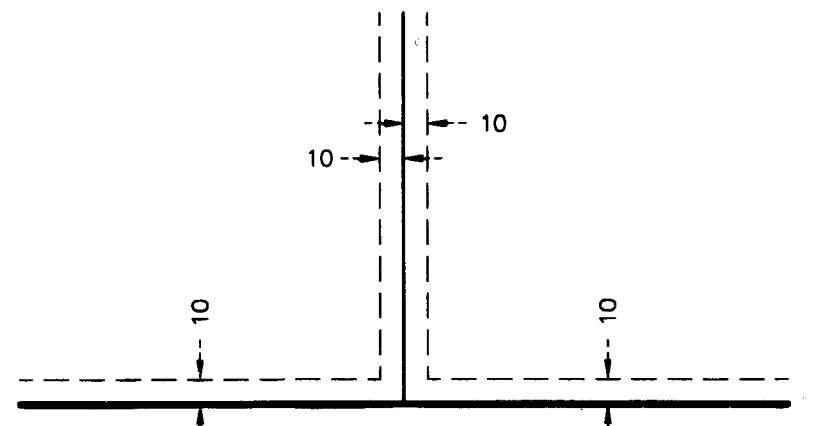
- DENOTES SET 1/2 INCH BY 14 INCH IRON PIPE MARKED BY RLS NO. 41578.
- DENOTES FOUND 1/2 INCH IRON PIPE MARKED BY RLS NO. 12251 (UNLESS OTHERWISE NOTED).
- △— DENOTES RIGHT OF ACCESS DEDICATED TO ANOKA COUNTY
- ▬▬▬ DENOTES WETLAND DELINEATED BY JACOBSON ENVIRONMENTAL SERVICES IN SEPTEMBER 2014.

FOR THE PURPOSES OF THIS PLAT THE WEST LINE OF TRACT A, REGISTERED LAND SURVEY NO. 223 IS ASSUMED TO HAVE A BEARING OF NORTH 00 DEGREES 09 MINUTES 11 SECONDS EAST.

EASEMENT DETAIL DETAIL SCALE: 1" = 30'



DRAINAGE AND UTILITY EASEMENTS ARE SHOWN THUS:



E. G. RUD & SONS, INC.
EST. 1877 Professional Land Surveyors
\$56