

BRIARDALE MANOR

CITY OF BLAINE
ANOKA COUNTY, MINNESOTA
SECTION 7, TOWNSHIP 31, RANGE 23

105298

Office of REGISTRAR OF TITLES
STATE OF MINNESOTA
COUNTY OF ANOKA
I hereby certify that the within Instrument
was filed in this office on the ___ day of
JUN 19 1979 A.D. 19__ at 2:35 o'clock P.M.
By Richard S. Carlson Registrar of Titles
By Oliver R. Erickson Deputy Registrar of Titles

KNOW ALL MEN BY THESE PRESENTS: That Pine Tree Builders, Inc., a Minnesota corporation, Briar Homes, Inc., a Minnesota corporation, and Bronson Erickson, Inc., a Minnesota corporation, all owners and proprietors of the following described property situate in the State of Minnesota and County of Anoka, to wit:

Outlot K, Donnay's Oak Park 15th,
EXCEPT that part of Outlot K lying within the plats of Donnay's Northwood and Donnay's Northwood 2nd, according to the plat on file and of record in the Office of the County Recorder, Anoka County, Minnesota.

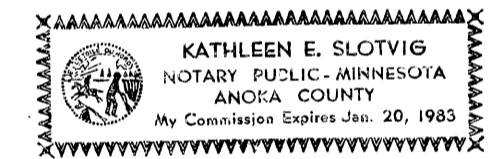
Have caused the same to be surveyed and platted as BRIARDALE MANOR, and do hereby donate and dedicate to the public for public use forever the lanes, avenue, drive, street and parkway, and the drainage and utility easements as shown on the plat.

In witness whereof said Pine Tree Builders, Inc., a Minnesota corporation, has caused these presents to be signed by its proper officer this 4th day of December, 1978, said Briar Homes, Inc., a Minnesota corporation, has caused these presents to be signed by its proper officer this 4th day of December, 1978, and said Bronson Erickson, Inc., a Minnesota corporation, has caused these presents to be signed by its proper officer this 4th day of December, 1978.

Pine Tree Builders, Inc.
Edwin A. Dropps, Jr. its president
Briar Homes, Inc.
Richard S. Carlson its president
Bronson Erickson, Inc.
Oliver R. Erickson its president

STATE OF MINNESOTA
COUNTY OF Anoka

The foregoing instrument was acknowledged before me this 4th day of December, 1978, by Edwin A. Dropps, Jr., president of said Pine Tree Builders, Inc., a Minnesota corporation, on behalf of said corporation, Richard S. Carlson, president of Briar Homes, Inc., a Minnesota corporation, on behalf of said corporation, and Oliver R. Erickson, president of said Bronson Erickson, Inc., a Minnesota corporation, on behalf of said corporation.

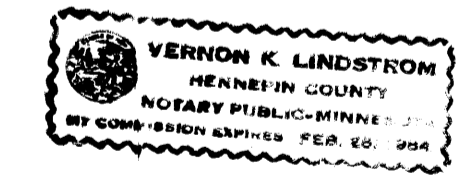


I hereby certify that I have surveyed and platted the land described on this plat as BRIARDALE MANOR; that this plat is a correct representation of the said survey; that all distances are correctly shown on said plat in feet and hundredths of a foot; that all monuments have been correctly placed in the ground as shown on said plat; that the outside boundary lines are correctly designated on said plat; and that there are no wet lands to be designated on said plat.

Roy J. Hansen
Roy J. Hansen, Land Surveyor
Minnesota Registration No. 6274

STATE OF MINNESOTA
COUNTY OF HENNEPIN

The foregoing instrument was acknowledged before me this 22nd day of November, 1978, by Roy J. Hansen, Land Surveyor.

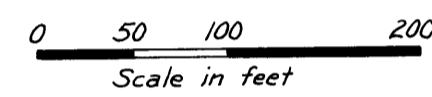
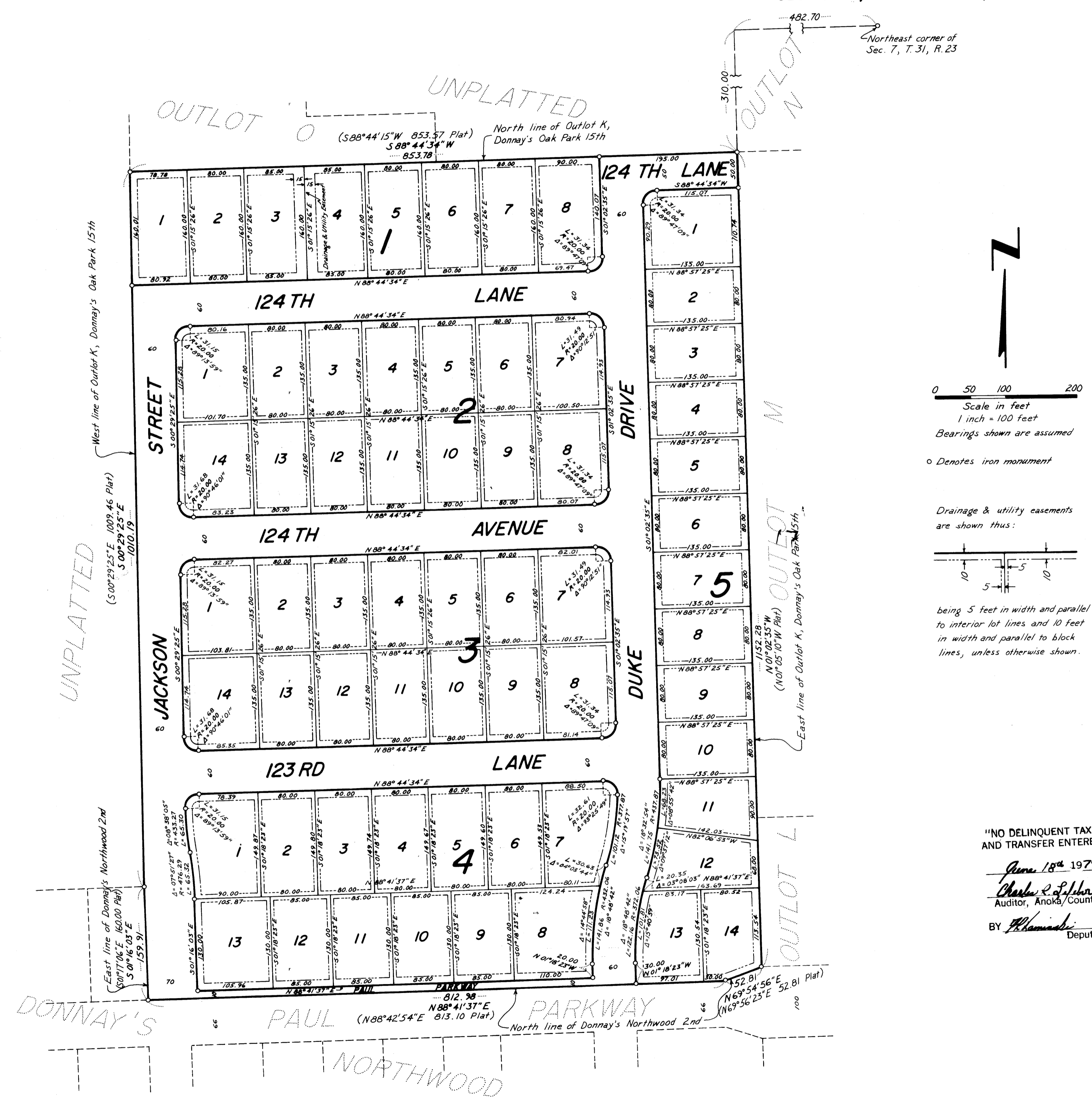


Vernon K. Lindstrom
Notary Public, Hennepin County, Minnesota
My commission expires Feb 25, 1984

We hereby certify that the City Council of the City of Blaine, Anoka County, Minnesota, duly accepted and approved this plat of BRIARDALE MANOR at a regular meeting thereof held this 15th day of March, 1979.

CITY OF BLAINE
ANOKA COUNTY, MINNESOTA
By Francis Fogarty Mayor
By Robert W. Anderson Manager

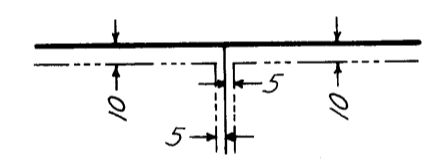
Checked and approved this 18th day of June, 1979.
Roland W. Anderson
Roland W. Anderson, Anoka County Surveyor



Bearings shown are assumed

o Denotes iron monument

Drainage & utility easements are shown thus:



being 5 feet in width and parallel to interior lot lines and 10 feet in width and parallel to block lines, unless otherwise shown.

"NO DELINQUENT TAXES AND TRANSFER ENTERED"

June 18th 1979

Charles R. Johnson
Auditor, Anoka County

By Phonnie Deputy

R. J. HANSEN
ENGINEERS & SURVEYORS