

OFFICIAL PLAT

BROOK CROSSING

CITY OF ANDOVER COUNTY OF ANOKA BK. 20 of TOWNS P. 21 SEC. 3, T32N, R24W

KNOW ALL PERSONS BY THESE PRESENTS: That AJE Companies, Inc., a Minnesota corporation, owner and proprietor and Community Pride Bank, a Minnesota Corporation, mortgagee of the following described property situated in the County of Anoka, State of Minnesota to wit:

That part of the Southeast Quarter of Section 3, Township 32, Range 24, Anoka County, Minnesota, described as follows:

Beginning at a point on the East line of said Southeast Quarter distant 1007.12 feet South from the Northeast corner of said Southeast Quarter, as measured along said East line; thence on an assumed bearing of South 0 degrees 51 minutes 23 seconds East, along said East line, a distance of 1479.24 feet to a point distant 137.74 feet North from the Southeast corner of said Southeast Quarter; thence North 61 degrees 27 minutes 03 seconds West a distance of 400.47 feet; thence North 59 degrees 11 minutes 33 seconds West a distance of 1344.45 feet; thence North 26 degrees 55 minutes 48 seconds East a distance of 359.64 feet; thence Northwesterly a distance of 56.61 feet along a tangential curve to the left concave to the West having a radius of 69.11 feet and a central angle of 46 degrees 55 minutes 48 seconds; thence North 20 degrees 00 minutes 00 seconds West tangent to said curve a distance of 104.68 feet; thence Northerly a distance of 45.82 feet along a tangential curve to the right, concave to the East having a radius of 101.82 feet and a central angle of 25 degrees 46 minutes 59 seconds; thence South 87 degrees 53 minutes 38 seconds East a distance of 943.69 feet; thence North 0 degrees 51 minutes 23 seconds West a distance of 130.17 feet; thence South 87 degrees 53 minutes 38 seconds East a distance of 418.80 feet to the point of beginning.

Have caused the same to be surveyed and platted as BROOK CROSSING and do hereby donate and dedicate to the public for public use forever the avenue, streets and boulevard and easements for drainage and utility purposes and dedicate to Anoka County the right of access onto County Road No. 78 as shown on this plat.

In witness whereof said AJE Companies, Inc., a Minnesota corporation, has caused these presents to be signed by its proper officer this 11th day of January, 2006.

AJE COMPANIES, INC.

Anthony J. Emmerich, President

In witness whereof said Community Pride Bank, a Minnesota corporation has caused these presents to be signed by its proper officer this 13 day of January, 2006.

COMMUNITY PRIDE BANK

John E. Post, President

STATE OF MINNESOTA COUNTY OF Anoka

The foregoing instrument was acknowledged before me this 11th day of January, 2006, by Anthony J. Emmerich, as President of AJE Companies, Inc., a Minnesota corporation, on behalf of the corporation.

DEANNA JO THOMPSON Notary Public - Minnesota My Commission Expires Jan 31, 2010

Deanna Jo Thompson Notary Public, Sherburne County, Minnesota My commission expires January 31, 2010

STATE OF MINNESOTA COUNTY OF Anoka

The foregoing instrument was acknowledged before me this 13th day of January, 2006, by John E. Post, as President of Community Pride Bank, a Minnesota corporation, on behalf of the corporation.

DEANNA JO THOMPSON Notary Public - Minnesota My Commission Expires Jan 31, 2010

Deanna Jo Thompson Notary Public, Sherburne County, Minnesota My commission expires January 31, 2010

I hereby certify that I have surveyed and platted the land described on this plat as BROOK CROSSING; that this plat is a true and correct representation of said survey; that all distances are correctly shown on the plat in feet and hundredths of a foot; that all monuments will be correctly placed in the ground as shown within one year after the recording date of this plat or will be placed as required by the local government unit as designated on said plat; that the boundary lines are correctly designated on the plat and that there are no wetlands as defined in MS 505.02, Subd. 1 or public highways to be designated on said plat other than as shown.

Blake L. Rivard, Land Surveyor Minnesota License No. 19421

STATE OF MINNESOTA COUNTY OF Anoka

The foregoing instrument was acknowledged before me this 6th day of January, 2006, by Blake L. Rivard, Land Surveyor.

ANITA M. SPADING Notary Public - Minnesota My Commission Expires Jan. 31, 2010

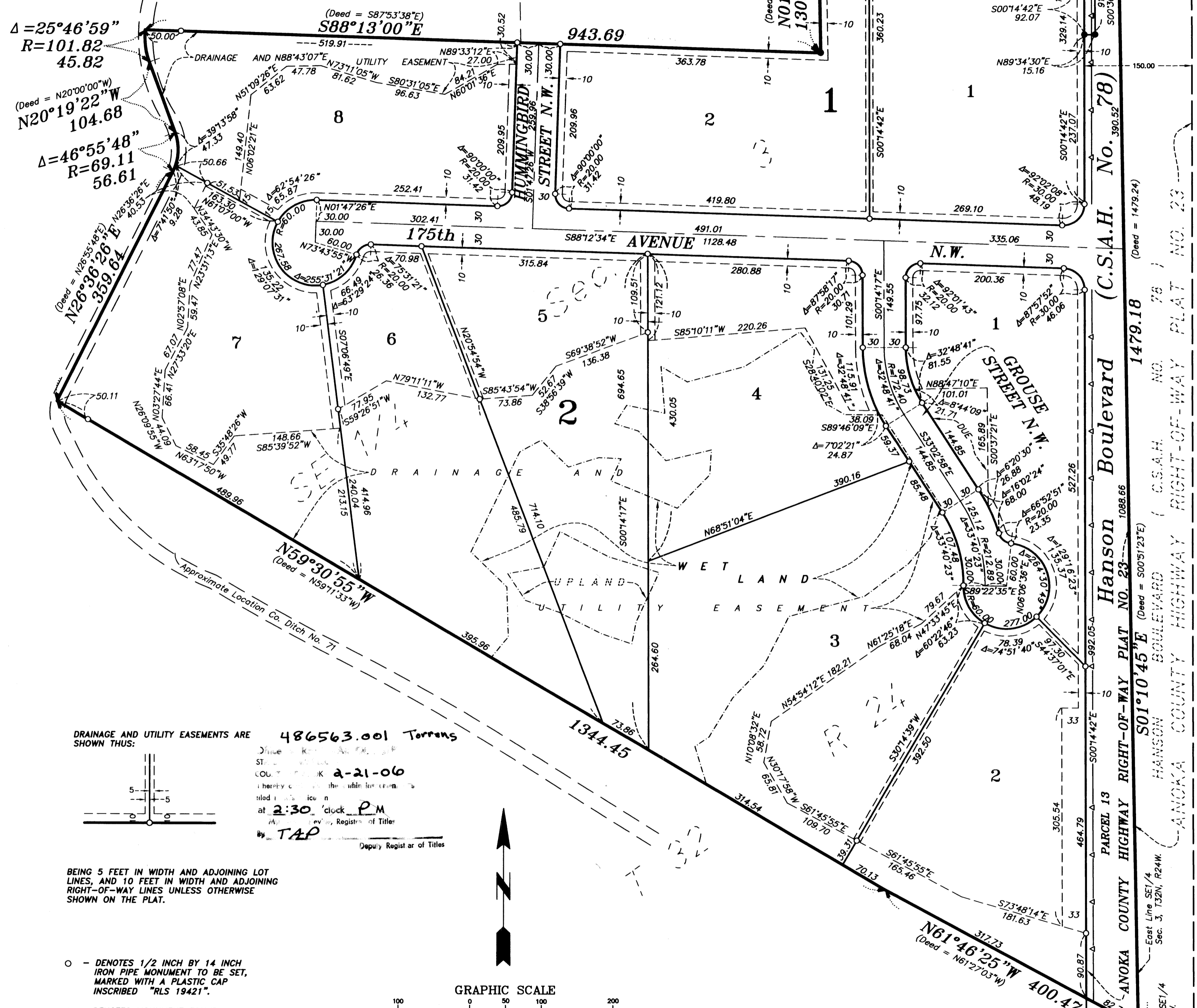
Anita M. Spading Notary Public, Hennepin County, Minnesota My commission expires Jan 31, 2010

The foregoing plat of BROOK CROSSING was approved and accepted by the City Council of Andover, Minnesota at a regular meeting thereof held this 20th day of December, 2005. If applicable, the written comments and recommendations of the Commissioner of Transportation and County Highway Engineer have been received by the City or the prescribed 30 day period has elapsed without receipt of such comments and recommendations, as provided by Minnesota Statutes, Section 205.03, Subd. 2.

CITY COUNCIL OF ANDOVER, MINNESOTA By [Signature] Mayor By [Signature] Clerk

Checked and approved this 21st day of February, 2006.

Larry O. Hoium Anoka County Surveyor by Charles F. Lutgen, Deputy



DRAINAGE AND UTILITY EASEMENTS ARE SHOWN THUS: 486563.001 Torrens... at 2:30 P.M. by TAP

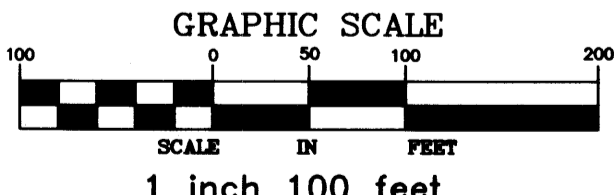
BEING 5 FEET IN WIDTH AND ADJOINING LOT LINES, AND 10 FEET IN WIDTH AND ADJOINING RIGHT-OF-WAY LINES UNLESS OTHERWISE SHOWN ON THE PLAT.

- Legend for symbols: DENOTES 1/2 INCH BY 14 INCH IRON PIPE MONUMENT TO BE SET, MARKED WITH A PLASTIC CAP INSCRIBED "RLS 19421", DENOTES MONUMENT FOUND, DENOTES ANOKA COUNTY MONUMENT, DENOTES PK Nail Found, DENOTES Drainage and Utility Easement, DENOTES Right of Access Dedicated to Anoka County

NOTES:

FOR THE PURPOSES OF THIS PLAT THE EAST LINE OF THE SOUTHEAST QUARTER OF SEC. 3-T32N-R24W IS ASSUMED TO HAVE A BEARING OF S01°10'45"E.

I HEREBY CERTIFY THAT THE CURRENT AND DELINQUENT TAXES ON THE LANDS DESCRIBED WITHIN ARE PAID AND THE TRANSFER IS ENTERED... MAUREN J. DEVINE DEPUTY PROPERTY TAX ADMINISTRATOR



MIDWEST Land Surveyors & Civil Engineers, Inc.