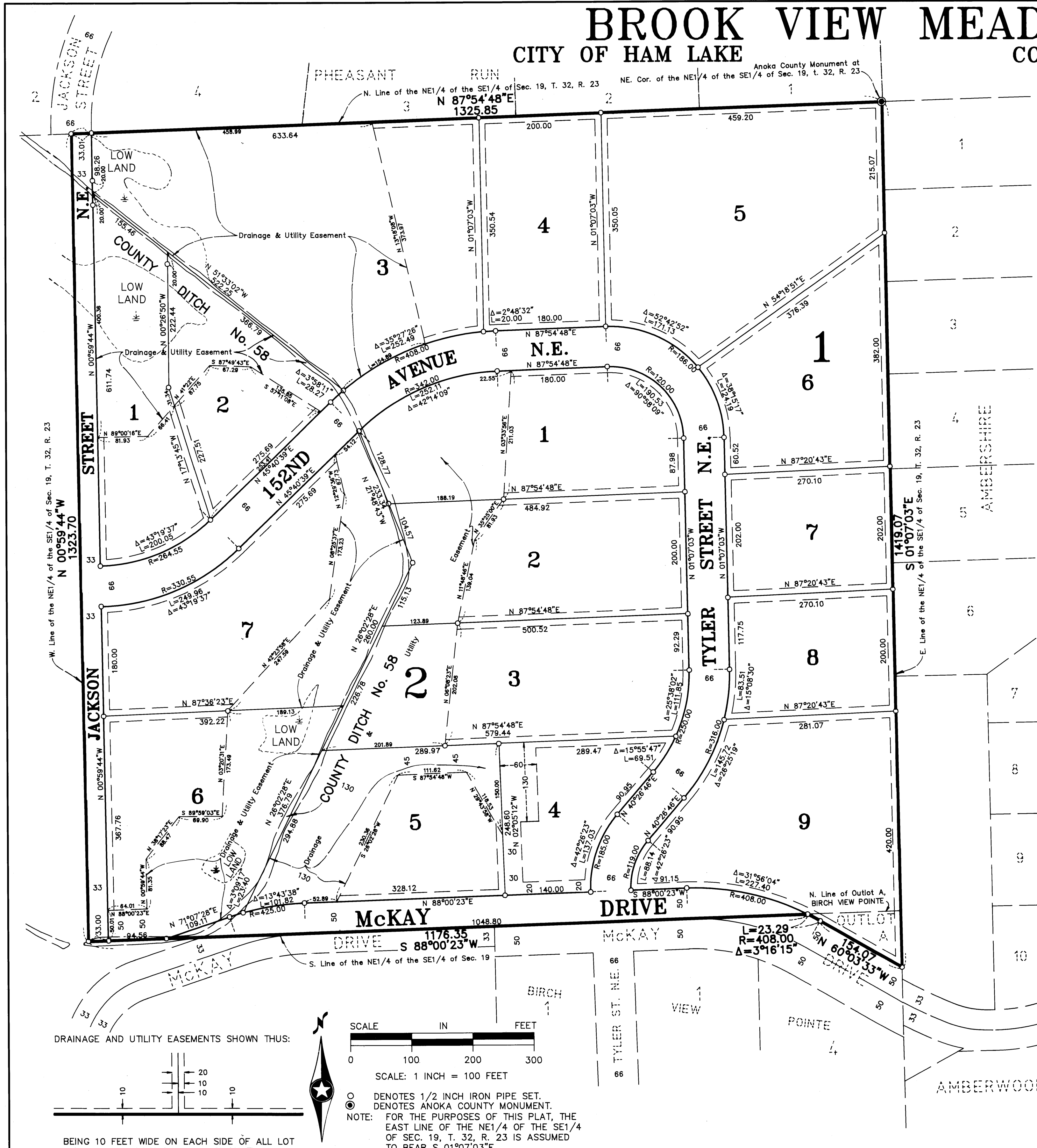


BROOK VIEW MEADOWS

CITY OF HAM LAKE
COUNTY OF ANOKA



KNOW ALL PERSONS BY THESE PRESENTS: That North Metro Properties, Inc., a Minnesota corporation, owner and proprietor, and Builders Mortgage Corporation, a Minnesota corporation, mortgagee of the following described property situated in the County of Anoka, State of Minnesota, to-wit:

The Northeast Quarter of the Southeast Quarter of Section 19, Township 32, Range 23, Anoka County, Minnesota.

AND

Outlot A, BIRCH VIEW POINTE, according to the recorded plat thereof, Anoka County, Minnesota.

Have caused the same to be surveyed and platted as BROOK VIEW MEADOWS and do hereby donate and dedicate to the public for public use forever the avenue, drive and streets as shown on the plat. Also dedicating the drainage and utility easements as shown on the plat. In witness whereof said North Metro Properties, Inc., has caused these presents to be signed by its proper officer this 23 day of February, 1995. Also in witness whereof said Builders Mortgage Corporation has caused these presents to be signed by its proper officer this 23 day of February, 1995.

NORTH METRO PROPERTIES, INC.:

Jeffrey A. Stalberger
Jeffrey A. Stalberger, as President

BUILDERS MORTGAGE CORPORATION

Ronald G. Stratton
Ronald Stratton, as President

STATE OF MINNESOTA) The foregoing instrument was acknowledged before me this 23rd day of February, 1995, by Jeffrey A. Stalberger, President of North Metro Properties, Inc., a Minnesota corporation, on behalf of the corporation.

Cheryl K. Alvarez
CHERYL K. ALVAREZ
NOTARY PUBLIC
MINNESOTA
MY COMMISSION EXPIRES 03-31-2000

Cheryl K. Alvarez
Notary Public, ANOKA County, Minnesota
My Commission expires 1-31-2000

STATE OF MINNESOTA) The foregoing instrument was acknowledged before me this 23rd day of February, 1995, by Ronald G. Stratton, President of Builders Mortgage Corporation, a Minnesota corporation, on behalf of the corporation.

Cheryl K. Alvarez
CHERYL K. ALVAREZ
NOTARY PUBLIC
MINNESOTA
MY COMMISSION EXPIRES 03-31-2000

Cheryl K. Alvarez
Notary Public, ANOKA County, Minnesota
My Commission expires 1-31-2000

I hereby certify that I have surveyed and platted the land described in the dedication on this plat as BROOK VIEW MEADOWS; that the plat is a correct representation of said survey; that all distances are correctly shown on said plat in feet and hundredths of a foot; that the monuments have been correctly placed in the ground as shown; that the outside boundaries are correctly designated on said plat; and that there are no wetlands or public highways to be designated on said plat other than as shown thereon.

Jeffrey N. Caine
Jeffrey N. Caine, Registered Land Surveyor
Minnesota Registration No. 12251

STATE OF MINNESOTA) The surveyors certificate was acknowledged before me a Notary Public, this 5th day of February, 1995, by Jeffrey N. Caine, Land Surveyor.

Bill McKent
BILL MCKENT
NOTARY PUBLIC
ANOKA COUNTY
MY COMMISSION EXPIRES 1-31-00

Bill McKent
Notary Public, Anoka County, Minnesota
My Commission expires 1-31-00

CITY OF HAM LAKE

We hereby certify that the City Council of the City of Ham Lake, Anoka County, Minnesota, duly accepted and approved the plat of BROOK VIEW MEADOWS at a regular meeting held this 17 day of January, 1995. If applicable, the written comments and recommendations of the Commissioner of Transportation and the County Highway Engineer have been received by the city or the prescribed 30 day period has elapsed without receipt of such comments and recommendations, as provided by Minn. Statutes, Section 505.03, Subd. 2.

By *William G. Neenan* Mayor By *Ulfie A. Nyala* Clerk

Checked and approved this 23rd day of FEB., 1995.

By *Merlyn D. Anderson* by *Larry D. Stein*
Anoka County Surveyor Deputy

I HEREBY CERTIFY THAT THE CURRENT AND DELINQUENT TAXES ON THE LANDS DESCRIBED WITHIN ARE PAID AND THE TRANSFER IS
FILED
Jan 23 1995
EDWARD M. ZURESKA
REGISTERED LAND SURVEYOR
BY *J. Culver*
COUNTY PROPERTY TAX ADMINISTRATOR

**CAINE & ASSOCIATES
LAND SURVEYORS, INC.**

Receipt No 95008516 In Amt. of \$50.00

