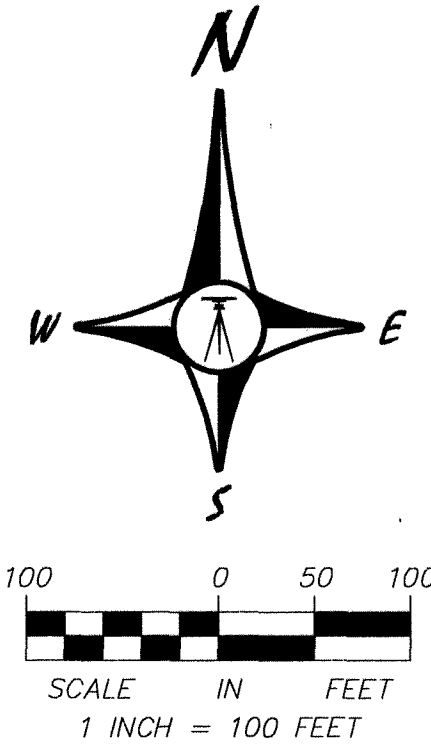


BROOKFIELD FOURTH ADDITION

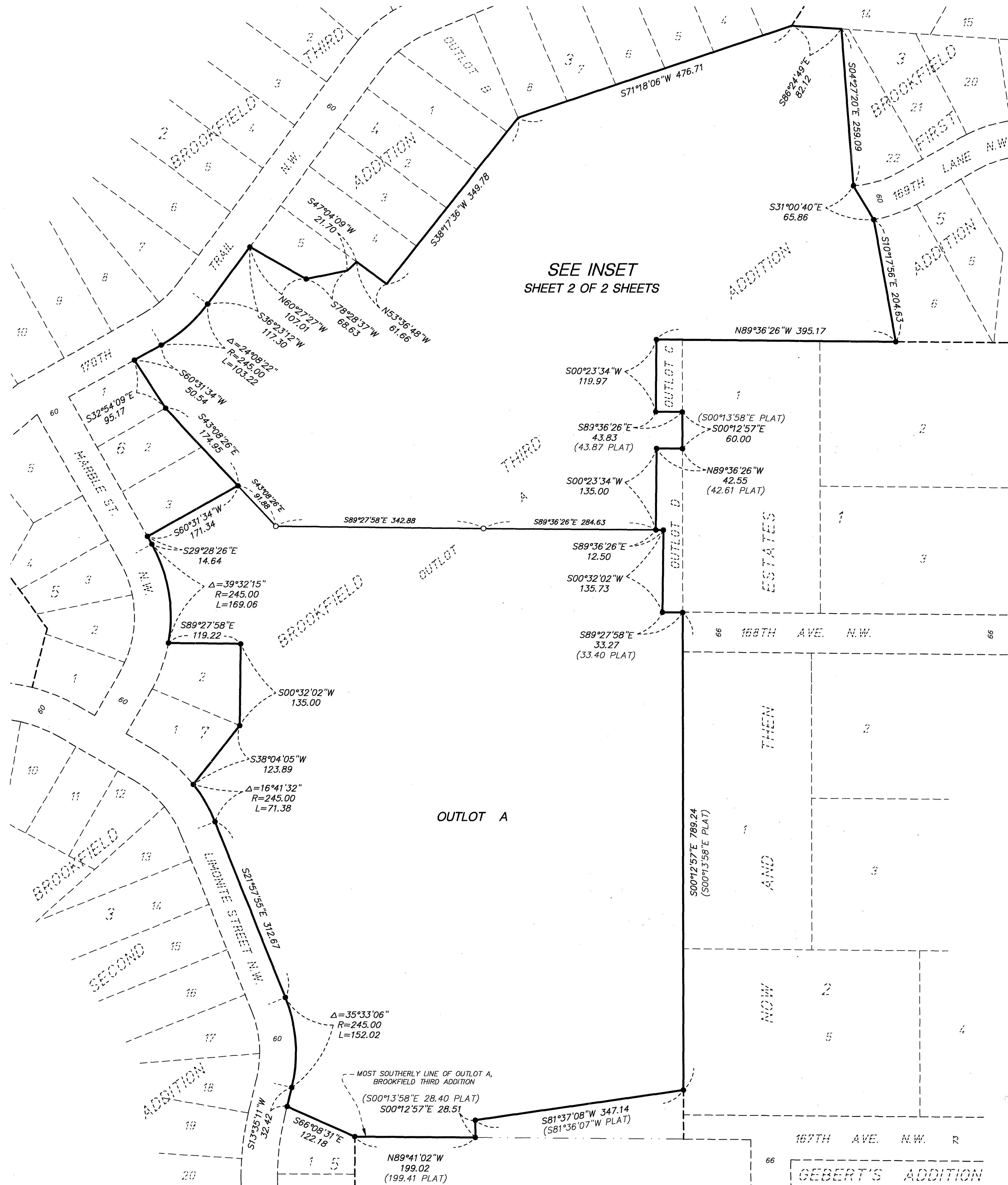


BEARING NOTE

FOR THE PURPOSES OF THIS PLAT, THE MOST SOUTHERLY LINE OF OUTLOT A, BROOKFIELD THIRD ADDITION IS ASSUMED TO HAVE A BEARING OF NORTH 89 DEGREES 41 MINUTES 02 SECONDS WEST.

LEGEND

- DENOTES IRON PIPE MONUMENT FOUND
 - DENOTES SET 1/2" IRON PIPE WITH CAP MARKED R.L.S. 42627
- (PLAT) REFERS TO DIMENSIONS AS SHOWN ON THE RECORDED PLAT OF BROOKFIELD THIRD ADDITION



SEE INSET SHEET 2 OF 2 SHEETS

KNOW ALL PERSONS BY THESE PRESENTS: That 21st Century Bank, a Minnesota corporation, owner of the following described property:

Outlot A, BROOKFIELD THIRD ADDITION, according to the recorded thereof, Anoka County, Minnesota.

Has caused the same to be surveyed and platted as BROOKFIELD FOURTH ADDITION and does hereby dedicate to the public for public use the public ways and the drainage and utility easements as shown on this plat.

In witness whereof said 21st Century Bank, a Minnesota corporation, has caused these presents to be signed by its proper officers this 28th day of February, 2014.

21st CENTURY BANK

By Thomas P. Dolphin, CEO
 Chief Executive Officer

By Kraig J. Kluber, SVP
 Senior Vice President

State of Minnesota
County of Anoka

This instrument was acknowledged before me on February 28, 2014, by Thomas P. Dolphin as Chief Executive Officer and Kraig J. Kluber as Senior Vice President of 21st Century Bank, a Minnesota corporation, on behalf of the corporation.

Jody L. Erickson
 Notary Public, Anoka County, Minnesota
 My commission expires Jan 31, 2015

I Kyle J. Roddy do hereby certify that this plat was prepared by me or under my direct supervision; that I am a duly Licensed Land Surveyor in the State of Minnesota; that this plat is a correct representation of the boundary survey; that all mathematical data and labels are correctly designated on this plat; that all monuments depicted on this plat have been, or will be correctly set within one year; that all water boundaries and wet lands, as defined in Minnesota Statutes, Section 505.01, Subd. 3, as of the date of this certificate are shown and labeled on this plat; and all public ways are shown and labeled on this plat.

Dated this 27th day of February, 2014

Kyle J. Roddy
 Kyle J. Roddy, Licensed Land Surveyor
 Minnesota License Number 42627

State of Minnesota
County of Isanti

This instrument was acknowledged before me on February 27, 2014 by Kyle J. Roddy.

Jessica Campbell
 Notary Public, Isanti County, Minnesota
 My commission expires 1/31/18

CITY COUNCIL, CITY OF RAMSEY, MINNESOTA

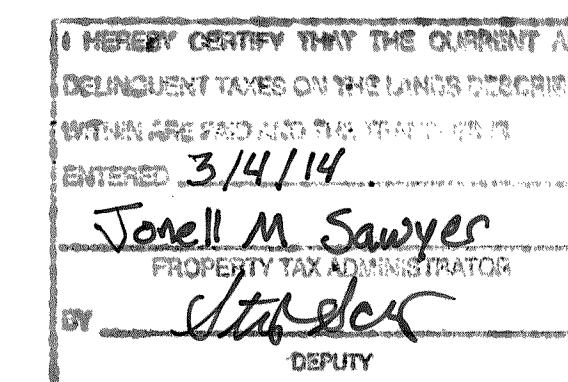
This plat of BROOKFIELD FOURTH ADDITION was approved and accepted by the City Council of the City of Ramsey, Minnesota at a regular meeting thereof held this 10th day of DECEMBER, 2013, and said plat is in compliance with the provisions of Minnesota Statutes, Section 505.03, Subd. 2.

By Sarah Deen Mayor
 By Jonathan Kruizing City Clerk

ANOKA COUNTY SURVEYOR

I hereby certify that in accordance with Minnesota Statutes, Section 505.021, Subd. 11, this plat has been reviewed and approved this 4th day of MARCH, 2014.

Larry D. Holm
 Larry D. Holm, Anoka County Surveyor



2078580.001
 Office of RECORDS/MANAGER
 OF TITLES
 STATE OF MINNESOTA COUNTY OF ANOKA
 I hereby certify that the within instrument was filed in this office for record on this 4th day of March, 2014 at 12:33 o'clock P.M. and was duly recorded in book 77 page 9
Jonell M. Sawyer
 Records/Registrar of Titles
 By Jonell M. Sawyer

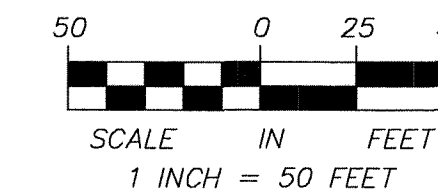
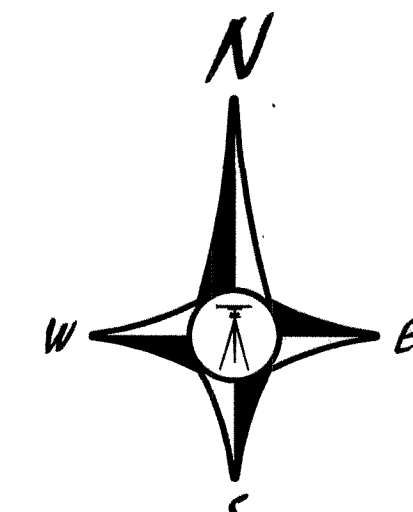
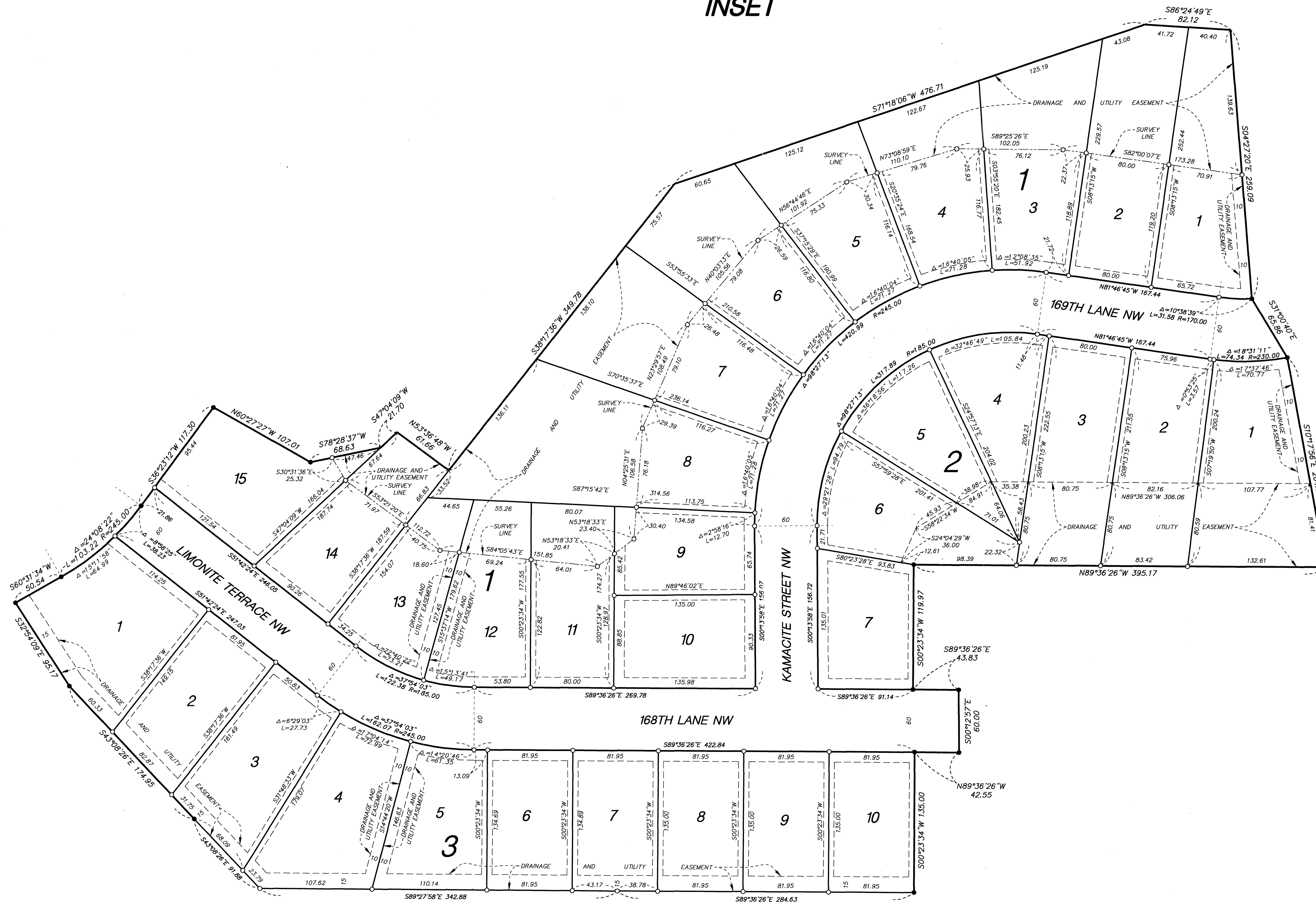
\$56.00



BROOKFIELD FOURTH ADDITION

Book 77 of ABST B.1 CITY OF RAMSEY
COUNTY OF ANOKA
SEC. 10, T. 32, R. 25

INSET



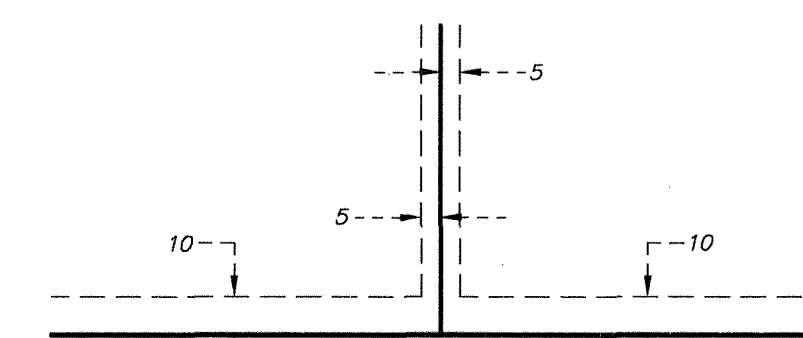
BEARING NOTE

FOR THE PURPOSES OF THIS PLAT, THE MOST SOUTHERLY LINE OF OUTLOT A, BROOKFIELD THIRD ADDITION IS ASSUMED TO HAVE A BEARING OF NORTH 89 DEGREES 41 MINUTES 02 SECONDS WEST.

LEGEND

- DENOTES IRON PIPE MONUMENT FOUND
- DENOTES SET 1/2" IRON PIPE WITH CAP MARKED R.L.S. 42627

DRAINAGE AND UTILITY EASEMENTS ARE SHOWN THUS:



BEING 5 FEET IN WIDTH AND ADJOINING SIDE LOT LINES, ALSO BEING 10 FEET IN WIDTH AND ADJOINING RIGHT-OF-WAY AND REAR LOT LINES, UNLESS OTHERWISE SHOWN ON THIS PLAT.