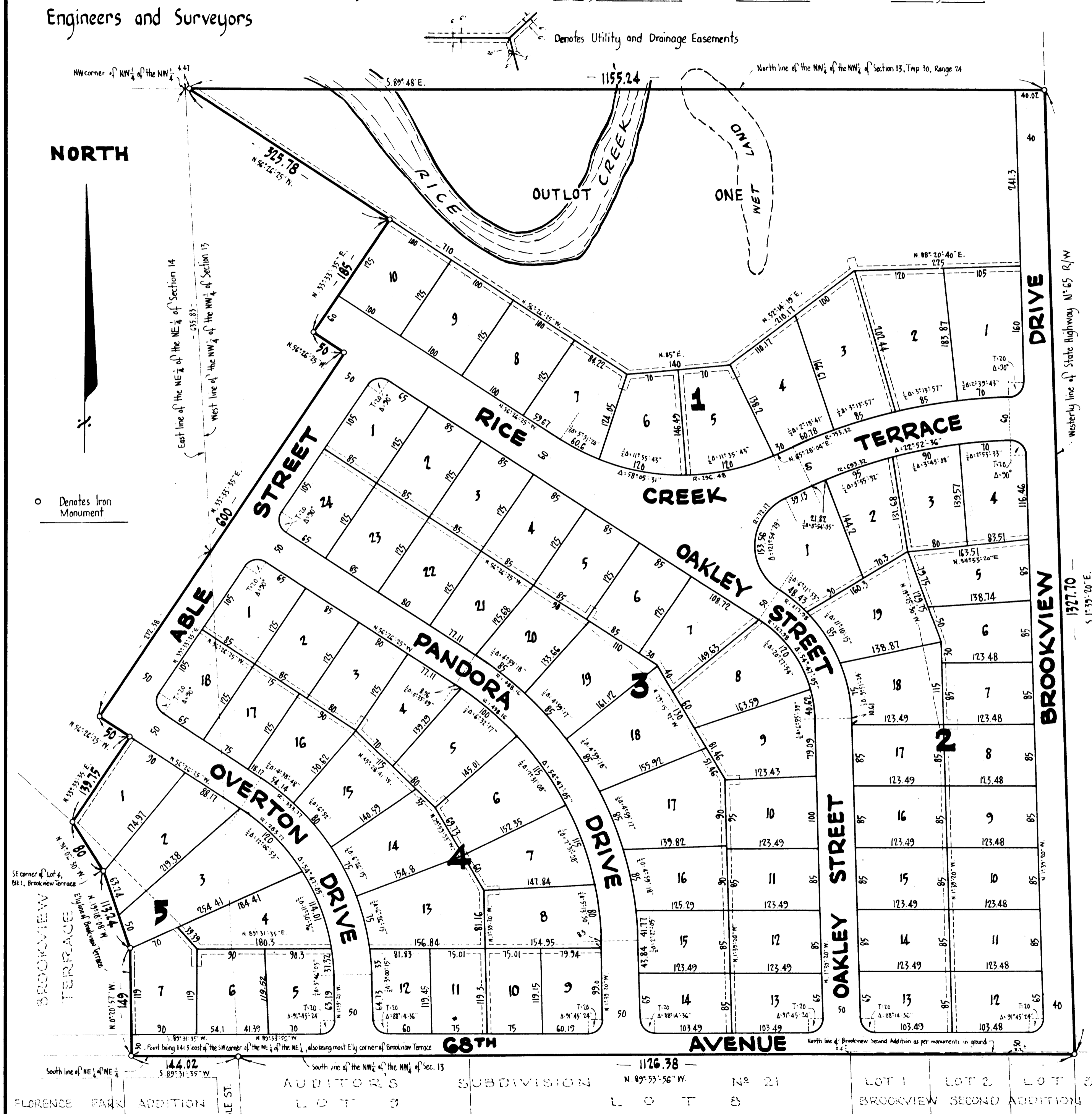


BROOKVIEW TERRACE 2ND ADDITION

- CITY OF FRIDLEY - COUNTY OF ANOKA -

MINDER ENGINEERING CO., INC.
Engineers and Surveyors

Bearings are assumed Scale 1"=100' January, 1959



KNOW ALL MEN BY THESE PRESENTS: that C.A. Nelson Farms, Inc., a Minnesota Corporation, owners and proprietors of the following described property situate in the State of Minnesota and County of Anoka to-wit: All that part of the NW 1/4 of the NW 1/4 of Section 13, Township 30, Range 24, Anoka County, Minnesota and the NE 1/4 of the NE 1/4 of Section 14, Township 30, Range 24 of said County lying westerly of State Highway No. 65 and lying easterly of the following described line: -- Beginning at a point in the south line of the said NE 1/4 of the NE 1/4 distant 1141.5 feet east of the southwest corner thereof and also being the most easterly corner of Brookview Terrace; thence northerly along the easterly line of said Addition to the southeast corner of Lot 4, Block 1, of said Brookview Terrace; thence North 31°-02'-30" West (said bearing is assumed) along the easterly line of said lot a distance of 80 feet; thence North 33°-33'-35" East a distance of 139.75 feet; thence North 56°-26'-25" West a distance of 50 feet; thence North 33°-33'-35" East a distance of 600 feet; thence North 56°-26'-25" West a distance of 50 feet; thence North 33°-33'-35" East a distance of 185 feet; thence northwesterly to a point in the north line of said NW 1/4 of the NW 1/4 distant 4.47 feet east of the northwest corner thereof and thereby terminating; have caused the same to be surveyed and platted as BROOKVIEW TERRACE 2ND ADDITION, and do hereby donate and dedicate to the public for public use forever the Avenue, Streets and Drives as shown on the annexed plat, subject to the Utility and Drainage Easements as shown on the annexed plat for use of municipality or other public utilities. In witness whereof said C.A. Nelson Farms, Inc. has caused these presents to be signed by its proper officers and its corporate seal to be hereunto affixed this 6th day of APRIL A.D. 1959.

In Presence of
John L. Nelson } As to Theo. L. Nelson and Hattie C.A. Holcombe
Hattie C.A. Holcombe }
 C.A. NELSON FARMS, INC.
Theo. L. Nelson President
Hattie C.A. Holcombe Secretary

State of Minnesota } s.s. On this 6th day of APRIL A.D. 1959, before me a Notary Public, within and for said County and State County of Hennepin } personally appeared Theo. L. Nelson and Hattie C.A. Holcombe, to me personally known who, being each by me duly sworn did say that they are respectively the President and the Secretary of C.A. Nelson Farms, Inc., the corporation named in the foregoing instrument, and that the seal affixed to said instrument is the corporate seal of said corporation, and that said instrument was signed in behalf of said corporation by authority of its Board of Directors and said Theo. L. Nelson and Hattie C.A. Holcombe acknowledged said instrument to be the free act and deed of said Corporation.

John L. Nelson
 Notary Public, Hennepin County, Minnesota
 My Commission Expires April 6, 1965

I hereby certify that I have surveyed and platted the property described on this plat as BROOKVIEW TERRACE 2ND ADDITION, that this plat is a correct representation of said survey; that all distances are correctly shown on said plat in feet and decimals of a foot; that the monuments for guidance of future surveys have been correctly placed in the ground as shown on said plat; that the topography of the land is correctly shown on the plat; that the outside boundaries of the land are correctly designated on said plat; and that there are no wet lands or public highways to be designated on said plat other than are shown thereon.

E. A. Rathbun
 Surveyor - Minnesota Registration No. 3195

State of Minnesota } s.s. Above certificate subscribed and sworn to before me, a Notary Public within and for said State and County on this 11 day of APRIL A.D. 1959.

Theo. L. Nelson
 Notary Public, Hennepin County, Minnesota
 My Commission Expires April 6, 1965

We hereby certify that the City Council of the City of Fridley, Anoka County, Minnesota, duly accepted and approved the annexed plat of BROOKVIEW TERRACE 2ND ADDITION, at a regular meeting thereof held this 24th day of FEBRUARY A.D. 1959.

CITY OF FRIDLEY, ANOKA COUNTY, MINNESOTA
 by *Frank C. LaFrenz* Mayor
 by *Morwin C. Brunell* Clerk

OFFICE OF REGISTER OF DEEDS } s.s.
 STATE OF MINNESOTA, COUNTY OF ANOKA }

I hereby certify that the within instrument was filed in this office for record on the 11 day of APRIL A.D. 1959 at 11:25 o'clock P.M. and duly recorded in book 11 of State page 21

Estelle S. Johnson
 Register of Deeds
 By *Margaret Russell* Deputy

I HEREBY CERTIFY THAT TAXES FOR THE YEAR 1959 ON THE LANDS DESCRIBED WITHIN ARE PAID
Walter B. Powers
 County Treasurer

TAXES PAID
 This 11th day of April, 1959
Samuel A. Campbell
 Auditor, Anoka County, Minn.
Walter B. Powers Deputy

AUDITORS SUBDIVISION No. 21 LOT 1 LOT 2 LOT 3
 FLORENCE PARK ADDITION ABLE ST. LOTS 9 SUBDIVISION LOTS 8 BROOKVIEW SECOND ADDITION