

BROOKVIEW TERRACE 3rd ADDITION

CITY OF FRIDLEY - COUNTY OF ANOKA

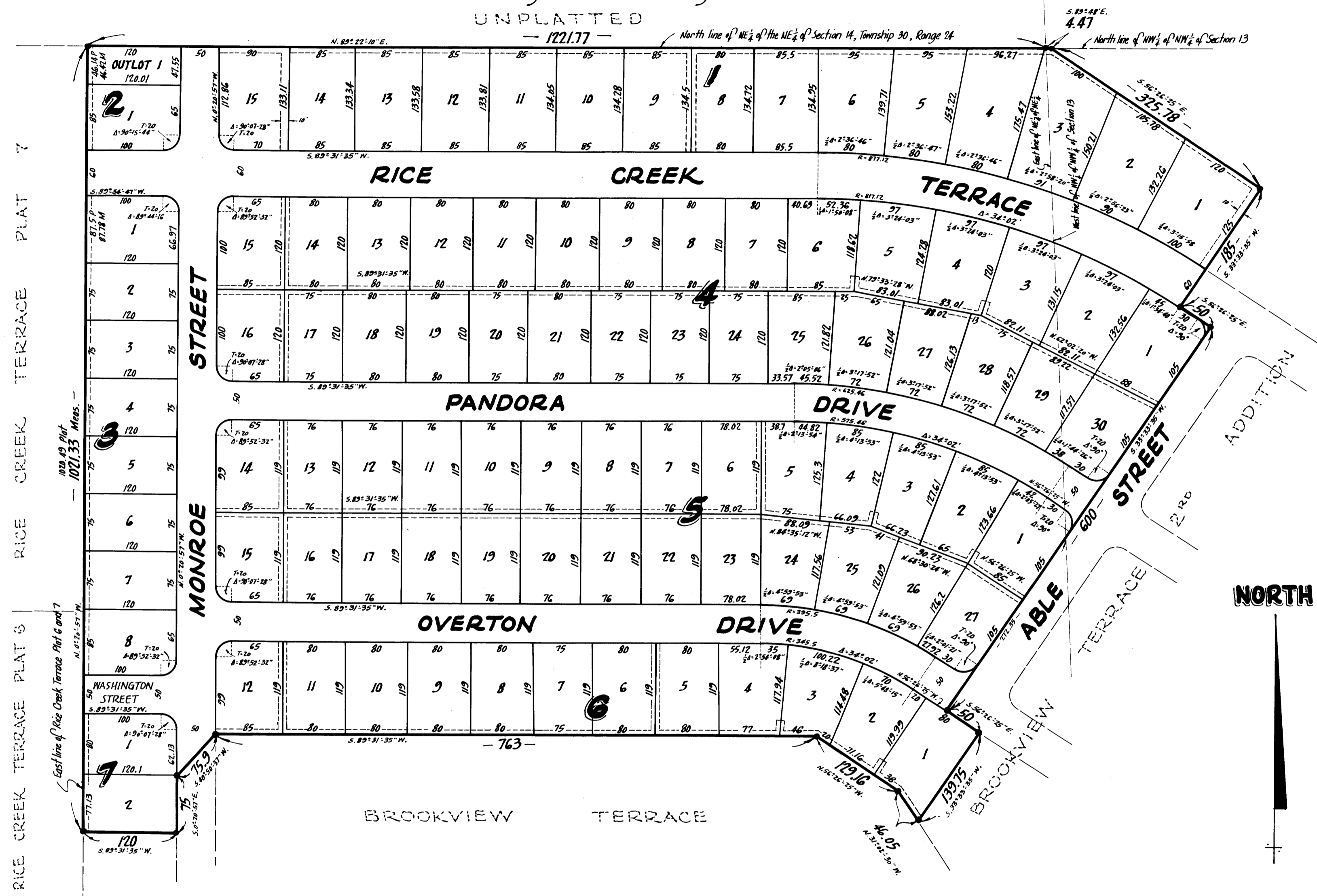
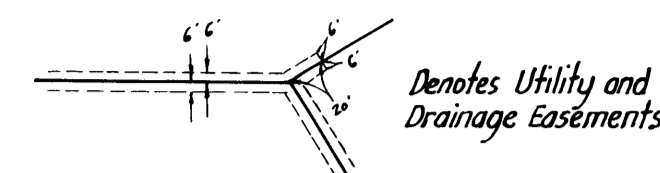
Suburban ENGINEERING, INC.

— Engineers and Surveyors —

UNPLATTED

• Denotes Iron Monument
Bearings are assumed

Scale 1"=100
March, 1959



KNOW ALL MEN BY THESE PRESENTS: that C.A. Nelson Farms, Inc. a Minnesota Corporation, owners and proprietors of the following described property situate in the State of Minnesota and County of Anoka to-wit: All that part of the NE 1/4 of the NE 1/4 of Section 14, Township 30, Range 24, Anoka County, Minnesota, lying East of Rice Creek Terrace Plat 6 and Rice Creek Terrace Plat 7, lying North of Brookview Terrace and lying West of Brookview Terrace 2nd Addition, also that part of the NW 1/4 of the NW 1/4 of Section 13, Township 30, Range 24, Anoka County, Minnesota, lying West of Brookview Terrace 2nd Addition; have caused the same to be surveyed and platted as BROOKVIEW TERRACE 3rd ADDITION, and do hereby donate and dedicate to the public for public use forever the Streets, Drives and Terrace as shown on the annexed plat, subject to the Utility and Drainage Easements as shown on the annexed plat for use of municipality or other public utilities. In witness whereof said C.A. Nelson Farms, Inc. has caused these presents to be signed by its proper officers and its corporate seal to be hereunto affixed this 6th day of APRIL A.D. 1959.

In Presence of
John S. Nelson As to Theo. L. Nelson and Hattie C.A. Holcombe
Hattie C.A. Holcombe Secretary
C.A. NELSON FARMS, INC.
John S. Nelson President

State of Minnesota } s.s.
County of Hennepin } On this 6th day of APRIL A.D. 1959, before me a Notary Public, within and for said County and State personally appeared Theo. L. Nelson and Hattie C.A. Holcombe, to me personally known who, being each by me duly sworn did say that they are respectively the President and the Secretary of C.A. Nelson Farms, Inc., the corporation named in the foregoing instrument, and that the seal affixed to said instrument is the corporate seal of said corporation, and that said instrument was signed in behalf of said corporation by authority of its Board of Directors and said Theo. L. Nelson and Hattie C.A. Holcombe acknowledged said instrument to be the free act and deed of said corporation.

John S. Nelson
Notary Public, Hennepin County, Minnesota
My Commission Expires April 6, 1965

I hereby certify that I have surveyed and platted the property described on this plat as BROOKVIEW TERRACE 3rd ADDITION; that this plat is a correct representation of said survey; that all distances are correctly shown on said plat in feet and decimals of a foot; that the monuments for guidance of future surveys have been correctly placed in the ground as shown on said plat; that the topography of the land is correctly shown on the plat; that the outside boundaries of the land are correctly designated on said plat; and that there are no wet lands or public highways to be designated on said plat other than are shown thereon.

State of Minnesota } s.s.
County of Anoka } Above certificate subscribed and sworn to before me, a Notary Public within and for said State and County on this 23rd day of April A.D. 1959.

Suzanne Miskowic
Notary Public, Anoka County, Minnesota
My Commission Expires September 26, 1964

E. A. Rattner
Surveyor - Minnesota Registration No. 3795

OFFICE OF REGISTER OF DEEDS
STATE OF MINNESOTA, COUNTY OF ANOKA } ss
I hereby certify that the within instrument was filed in this office for record on the 23rd day of April A.D. 1959 at 2:30 o'clock P.M., and was duly recorded in book "R. 2" Plate page 23

Christine Schmitt
By Margaret Campbell, Deputy

We hereby certify that the City Council of the City of Fridley, Anoka County, Minnesota, duly accepted and approved the annexed plat of BROOKVIEW TERRACE 3rd ADDITION, at a regular meeting thereof held this 23rd day of April A.D. 1959.

CITY OF FRIDLEY, ANOKA COUNTY, MINNESOTA

TAXES PAID
This 24th day of April 1959
Harriet M. Campbell
Auditor, Anoka County, Minn.
John S. Nelson Deputy

by *Frank...* Mayor
by *M. Warren...* Clerk

WE HEREBY CERTIFY THAT TAXES FOR THE YEAR 1958 ON THE LANDS DESCRIBED WITHIN ARE PAID
Chatter...
County Treasurer