

BRYANT PARK

CITY OF ANOKA,
ANOKA COUNTY, MN.

KNOW ALL MEN BY THESE PRESENTS: That R. A. C. Development Co., a Minnesota Partnership, fee owner; and The Northern Bank, a Minnesota corporation, mortgagee, of the following described property situated in the State of Minnesota, County of Anoka, to-wit:

That part of the North 55 acres of the North Half of the Southeast Quarter and that part of the South 53 1/3 acres of the Northeast Quarter of Section 31, Township 32, Range 24, Anoka County, Minnesota, described as follows:

Commencing at a point on the West line of said South 53 1/3 acres, distant 366.00 feet South of the Northwest corner thereof; thence East parallel with the North line of said South 53 1/3 acres a distance of 645.00 feet to the Northwest corner of Lot 16, Block 2, MORNINGSIDE 4TH ADDITION and actual point of beginning; thence return on the last described line a distance of 645.00 feet to said West line; thence South along said West line a distance of 480.00 feet to the intersection of the North line of said MORNINGSIDE 4TH ADDITION and the centerline of 7th Avenue North; thence East at a right angle, along said North line of MORNINGSIDE 4TH ADDITION, a distance of 200.00 feet; thence Southeasterly along a curve concave to the Southwest having a central angle of 41 degrees, 17 minutes, 28 seconds and a radius of 230.00 feet, along said North line of MORNINGSIDE 4TH ADDITION, a distance of 165.76 feet; thence Northwesterly, along the Westerly line of said MORNINGSIDE 4TH ADDITION, a distance of 180.00 feet; thence Northwesterly at a right angle, along said Westerly line of MORNINGSIDE 4TH ADDITION, a distance of 135.00 feet; thence Northeasterly, along said Westerly line of MORNINGSIDE 4TH ADDITION, a distance of 417.12 feet to the point of beginning.

Have caused the same to be surveyed and platted as BRYANT PARK, and do hereby donate and dedicate to the public for the public use forever the Avenue, Circle and Highway as shown on this plat. Also dedicating to the public, the easements as shown on this plat for drainage and utility purposes only. In witness whereof said R. A. C. Development Co., has caused these presents to be signed by its partners this 8th day of November, 1988.

R. A. C. DEVELOPMENT CO.

By: Richard C. Foster, Richard C. Foster, Partner By: Clayton R. Berg, Clayton R. Berg, Partner
By: Elizabeth J. Rudio, Elizabeth J. Rudio, Partner

ALSO in witness whereof said The Northern Bank has caused these presents to be signed by its proper officers and its corporate seal to be hereunto affixed this 8th day of Nov, 1988.

THE NORTHERN BANK

By: Larry L. Baden, Larry L. Baden, Senior Vice President
By: Howard Priebe, as: Vice President

State of Minnesota, County of Anoka
The foregoing instrument was acknowledged before me this 8th day of November, 1988 by Richard C. Foster, Partner; by Clayton R. Berg, Partner; and by Elizabeth J. Rudio, Partner; of R. A. C. Development Co., a Minnesota partnership.

Rita Muller, Notary Public, Anoka County, Minnesota
My commission expires: 1-30-92

State of Minnesota, County of Anoka
The foregoing instrument was acknowledged before me this 8th day of Nov, 1988 by Larry L. Baden, Senior Vice President; and by: Howard Priebe, as Vice President, of The Northern Bank, a Minnesota corporation, on behalf of the corporation.

Heaven Knopf, Notary Public, Hennepin County, Minnesota
My commission expires: 9-17-91

I hereby certify that I have surveyed and platted the property described in this plat as BRYANT PARK and that this plat is a correct representation of said survey; that all monuments have been correctly placed in the ground as shown on the plat; that all distances are correctly shown on the plat in feet and hundredths of a foot; that the outside boundary lines are correctly designated on the plat; and that there are no wet lands or public highways to be designated on the plat other than as shown thereon.

831312

OFFICE OF COUNTY RECORDER
STATE OF MINNESOTA, COUNTY OF ANOKA
I hereby certify that the within instrument was filed in the office for record on the NOV 16 A.D. 1988 at 10:45 o'clock AM, and was duly recorded in book 40 of Plats, page 6
Ted J. Randall, County Recorder
By: Sasha Kay Gje, Deputy

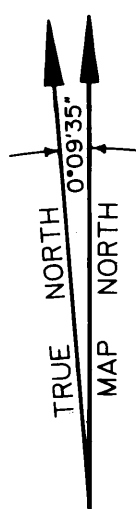
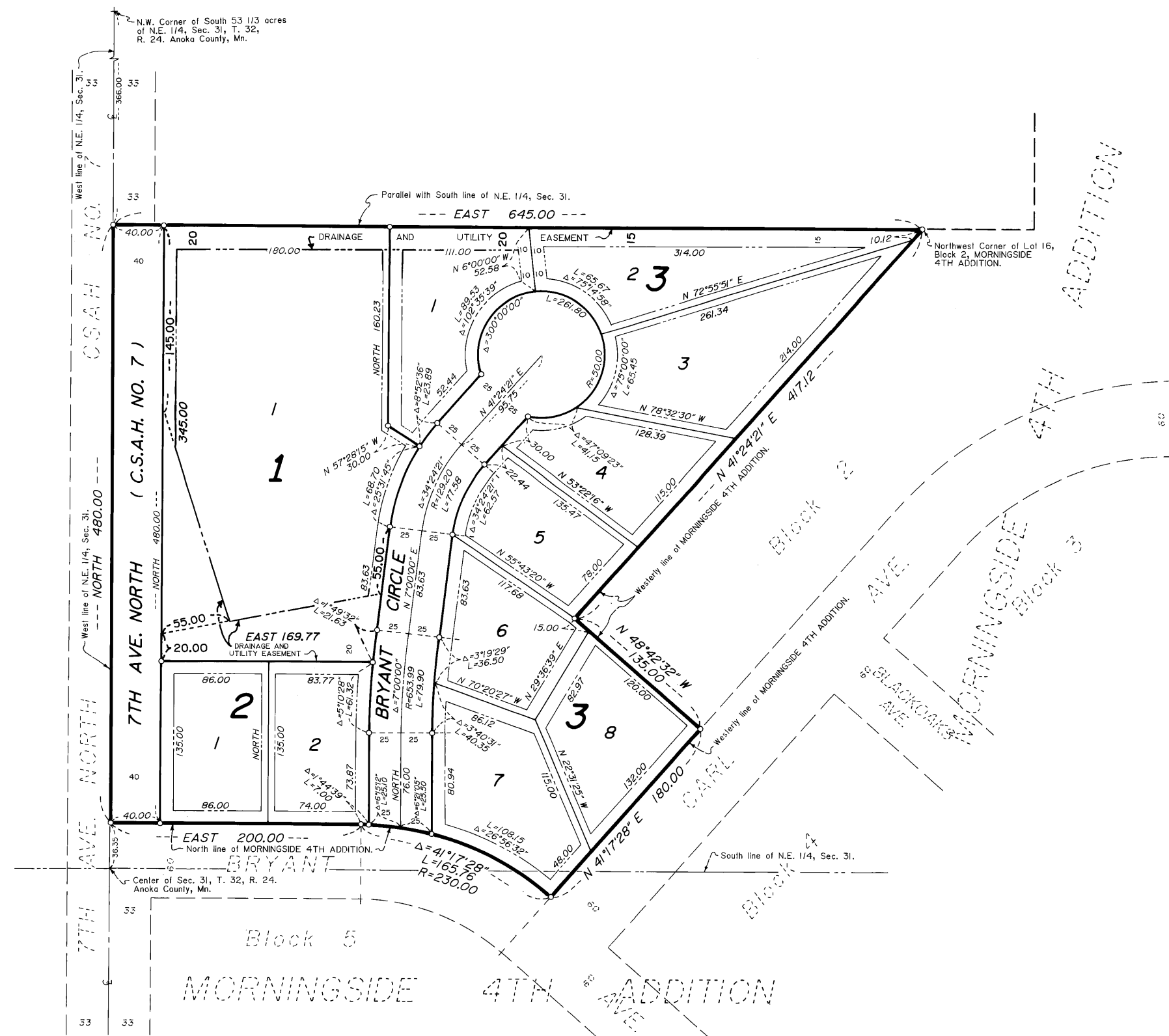
State of Minnesota, County of Sherburne
The foregoing instrument was acknowledged before me this 7th day of November, 1988, by Lynn P. Caswell, Land Surveyor.

Sharon J. Sherwood, Notary Public, Sherburne County, Minnesota
My commission expires: June 25, 1991

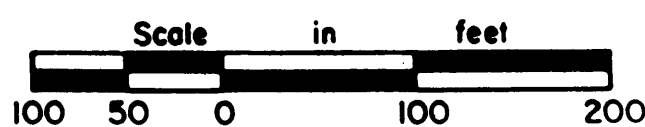
Annexed plat of BRYANT PARK was approved by the Planning Commission of the City of Anoka, Minnesota this 7th day of September, 1988.
By: Mark E. Nagel, Vice Chairman

Annexed plat of BRYANT PARK was approved by the City Council of Anoka, Minnesota at a regular meeting thereof held this 17th day of September, 1988. If applicable, the written comments and recommendations of the Commissioner of Transportation and the County Highway Engineer have been received by the City or the prescribed 30 day period has elapsed without receipt of such comments and recommendations, as provided by Minnesota Statutes Section 505.03, Subdivision 2.
By: Stephen M. Halsay, Mayor Attest: Mark E. Nagel, Clerk

This plat has been checked and approved this 16th day of Nov, 1988.
Mark E. Nagel, Anoka County Surveyor



Based upon State Plane Coordinates by Anoka County Surveyor.

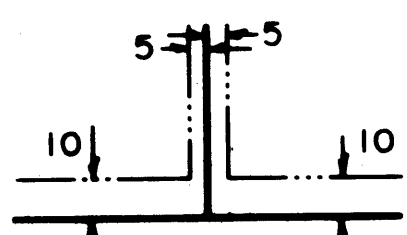


Scale: 1 inch = 100 feet.

For the purposes of this plat, the West line of the N.E. 1/4 of Sec. 31 is assumed to bear NORTH.

○ Denotes iron pipe set with a plastic plug stamped RLS 13057.

Drainage and Utility Easements are shown thus:



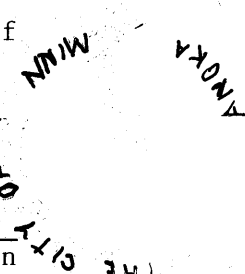
Being 10 feet in width and adjoining front and rear lot lines, also being 5 feet in width and adjoining side lot lines, unless noted otherwise.

November 16th 88
Charles R. Lofgren, Auditor
John S. Reimig

Donald C. Bailey, Anoka County Surveyor
2. Henry Rippey



ON BEHALF OF THE PARTNERSHIP



JOHN OLIVER & ASSOCIATES, INC.

922 Main Street
St. River, Minnesota 55390
(612) 441-2072
Land Surveying
Subdivision Design
Site Planning