

BUNKER LAKE INDUSTRIAL PARK ADDITION

KNOW ALL PERSONS BY THESE PRESENTS: That PSD, LLC, a Minnesota limited liability company, owner of the following described property:

Outlot B, ALPHA DEVELOPMENT, according to the recorded plat thereof, Anoka County, Minnesota

AND

That part of Puma Street NW, as dedicated and delineated on ALPHA DEVELOPMENT, according to the recorded plat thereof, Anoka County, Minnesota lying south of the westerly extension of the southerly right of way of Bunker Lake Boulevard as dedicated and delineated on said plat of ALPHA DEVELOPMENT.

Has caused the same to be surveyed and platted as BUNKER LAKE INDUSTRIAL PARK ADDITION and does hereby dedicate to the public for public use the public ways and the drainage and utility easements as created by this plat.

In witness whereof said PSD, LLC, a Minnesota limited liability company, has caused these presents to be signed by its proper officer this 9th day of October, 2017.

SIGNED: PSD, LLC

By Pamela S. Deal, Chief Manager
Pamela S. Deal

STATE OF MINNESOTA
COUNTY OF Anoka

This instrument was acknowledged before me this 9th day of October, 2017, by Pamela S. Deal, Chief Manager of PSD, LLC, a Minnesota limited liability company.

Patricia Invie

Patricia Invie

Notary Public, Anoka County, Minnesota

My Commission Expires Jan. 31, 2018

I Russell O. Halverson do hereby certify that this plat was prepared by me or under my direct supervision; that I am a duly Licensed Land Surveyor in the State of Minnesota; that this plat is a correct representation of the boundary survey; that all mathematical data and labels are correctly designated on this plat; that all monuments depicted on this plat have been, or will be correctly set within one year; that all water boundaries and wet lands, as defined in Minnesota Statutes, Section 505.01, Subd. 3, as of the date of this certificate are shown and labeled on this plat; and all public ways are shown and labeled on this plat.

Dated this 9th day of OCTOBER, 2017.

Russell O. Halverson
Russell O. Halverson, Licensed Land Surveyor
Minnesota License No. 41813

STATE OF MINNESOTA
COUNTY OF Anoka

This instrument was acknowledged before me this 9th day of October, 2017 by Russell O. Halverson.

Jodi Ogren

Jodi Ogren

Notary Public, Sherburne County, Minnesota

My Commission Expires Jan. 31, 2021

CITY COUNCIL, CITY OF RAMSEY, MINNESOTA

This plat of BUNKER LAKE INDUSTRIAL PARK ADDITION was approved and accepted by the City Council of the City of Ramsey, Minnesota at a regular meeting thereof held this 11th day of October, 2017, and said plat is in compliance with the provisions of Minnesota Statutes, Section 505.03, Subd. 2.

City Council, City of Ramsey, Minnesota

By Saul Steyer, Mayor
By John M. Huelbig

COUNTY SURVEYOR

I hereby certify that in accordance with Minnesota Statutes, Section 505.021, Subd. 11, this plat has been reviewed and approved this 17th day of OCTOBER, 2017.

Larry D. Holm
Larry D. Holm
Anoka County Surveyor

COUNTY AUDITOR/TREASURER

Pursuant to Minnesota Statutes, Section 505.021, Subd. 9, taxes payable in the year 2017 on the land hereinbefore described have been paid. Also, pursuant to Minnesota Statutes, Section 272.12, there are no delinquent taxes and transfer entered this 17 day of Oct, 2017.

Jonell M. Sawyer
Jonell M. Sawyer
Property Tax Administrator
By [Signature], Deputy

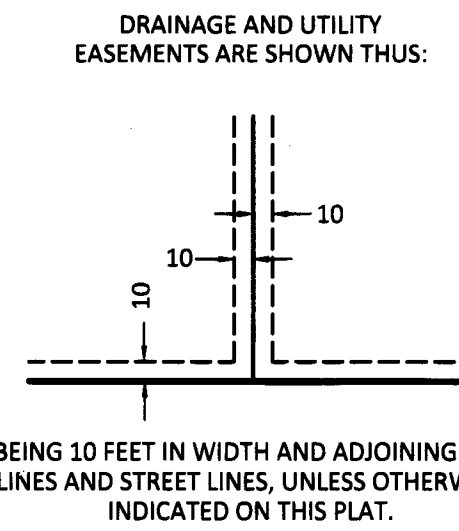
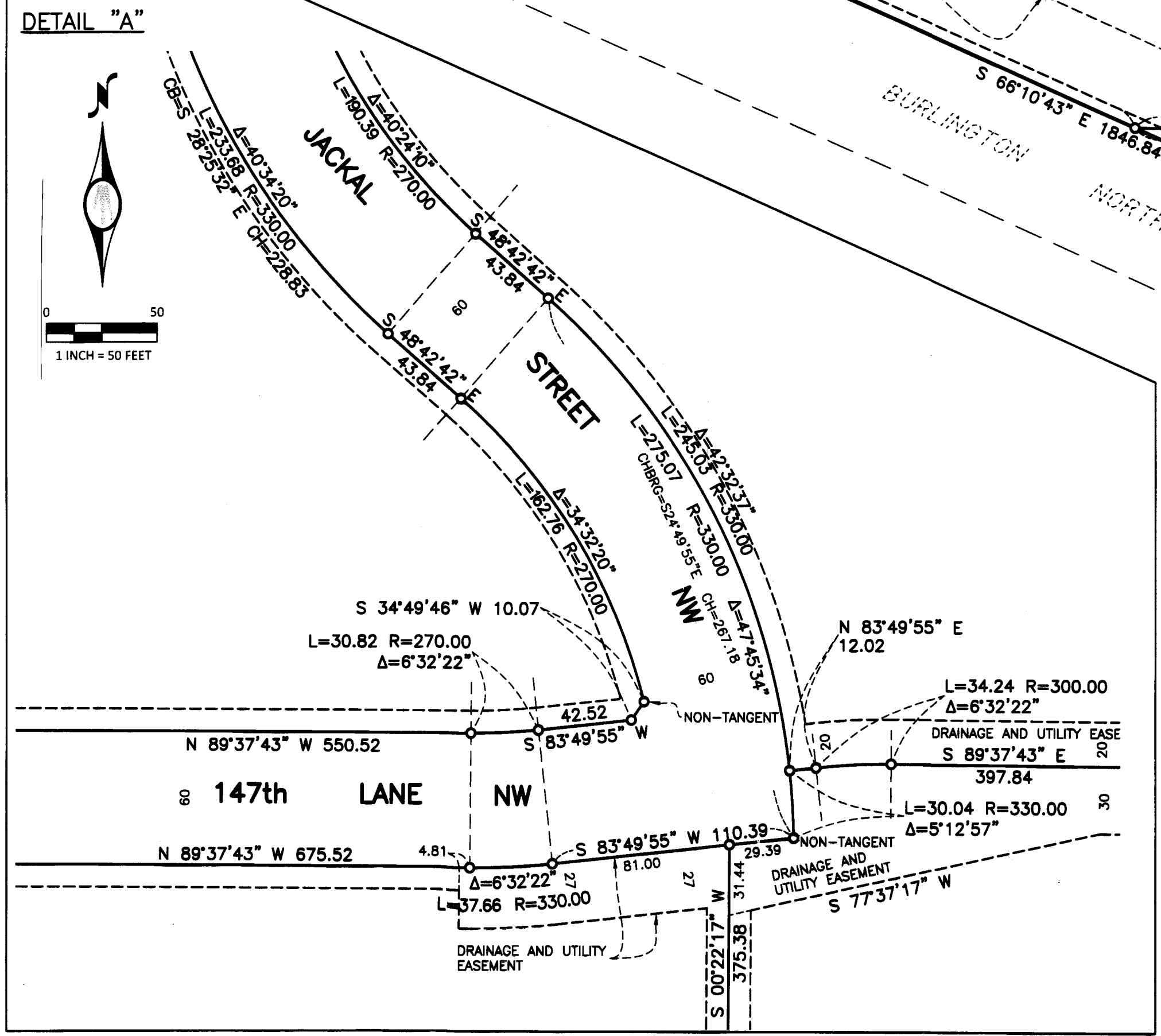
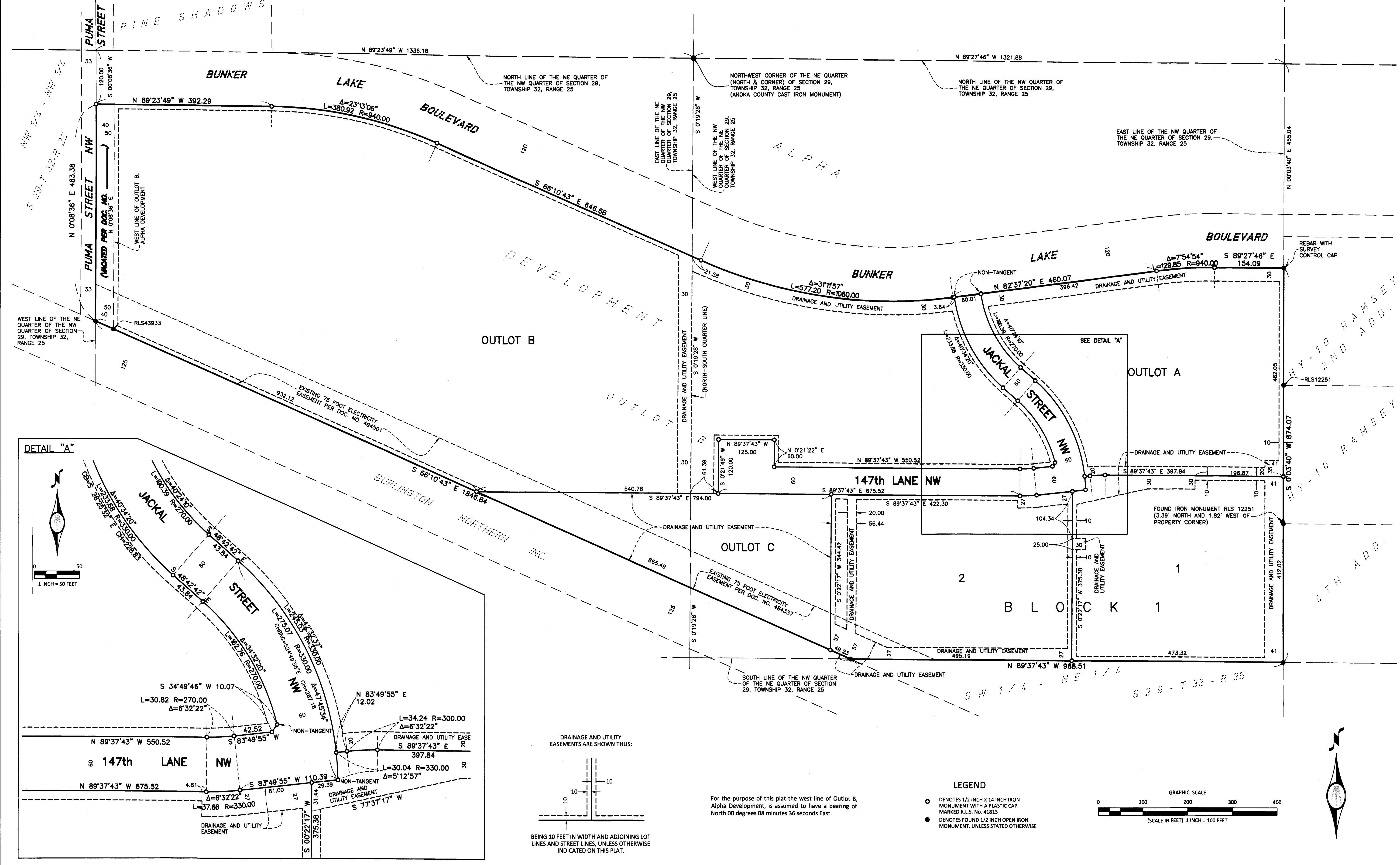
COUNTY RECORDER/REGISTRAR OF TITLES
County of Anoka, State of Minnesota

I hereby certify that this plat of BUNKER LAKE INDUSTRIAL PARK ADDITION was filed in the office of the County Recorder/Registrar of Titles for public record on this 17 day of OCT, 2017, at 11:30 o'clock A.M. and was duly recorded as Document Number 2183706.001.

Jonell M. Sawyer
Jonell M. Sawyer
County Recorder/Registrar of Titles
By [Signature], Deputy

\$ 56

BUNKER LAKE INDUSTRIAL PARK ADDITION



LEGEND

- DENOTES 1/2 INCH X 14 INCH IRON MONUMENT WITH A PLASTIC CAP MARKED R.L.S. No. 41813
- DENOTES FOUND 1/2 INCH OPEN IRON MONUMENT, UNLESS STATED OTHERWISE

For the purpose of this plat the west line of Outlot B, Alpha Development, is assumed to have a bearing of North 00 degrees 08 minutes 36 seconds East.

