

BUNKER MEADOWS

CITY OF HAM LAKE COUNTY OF ANOKA

KNOW ALL PERSONS BY THESE PRESENTS: That Merit Development Co., LLP, a Minnesota limited liability partnership, owner and proprietor, and Builders Development & Finance, Inc., a Minnesota corporation, mortgagee of the following described property situated in the County of Anoka, State of Minnesota, to-wit:

The North Half of the Southwest Quarter of Section 33, Township 32, Range 23, Anoka County, Minnesota.

Have caused the same to be surveyed and platted as BUNKER MEADOWS and do hereby donate and dedicate to the public for public use forever the avenue, lanes, streets, boulevard, road and drainage and utility easements as shown on the plat. Also dedicating to the County of Anoka the right of access onto County State Aid Highway No. 116 and County Road No. 52 as shown on the plat. In witness whereof said Merit Development Co., LLP has caused these presents to be signed by its proper officer this 13th day of April, 1998. Also in witness whereof said Builders Development & Finance, Inc., has caused these presents to be signed by its proper officer this 10th day of April, 1998.

MERIT DEVELOPMENT CO., LLP:

Todd D. Ganz
Todd D. Ganz, as partner

BUILDERS DEVELOPMENT & FINANCE, INC.:

Tim N. Golie
Tim N. Golie, as Vice President

STATE OF MINNESOTA) The foregoing instrument was acknowledged before me this 13th day of April, 1998, by Todd COUNTY OF Anoka) D. Ganz, as partner of Merit Development Co., LLP, a Minnesota limited liability partnership, on behalf of the limited liability partnership.



Kathleen L. Jewell
Notary Public, Hennepin County, Minnesota
My commission expires 1-31-2000

STATE OF MINNESOTA) The foregoing instrument was acknowledged before me this 10th day of April, 1998, by Tim N. Golie, COUNTY OF Anoka) as Vice President of Builders Development & Finance, Inc., a Minnesota corporation, on behalf of the corporation.

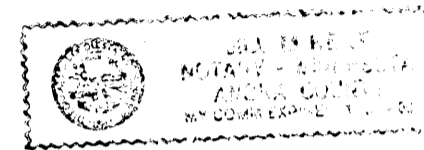


Kathleen L. Jewell
Notary Public, Hennepin County, Minnesota
My commission expires 1-31-2000

I hereby certify that I have surveyed and platted the land described in the dedication on this plat as BUNKER MEADOWS; that the plat is a correct representation of said survey; that all distances are correctly shown on said plat in feet and hundredths of a foot; that all monuments have been correctly placed in the ground as shown, or shall be correctly placed in the ground within one year of the recording of this plat; that the outside boundaries are correctly designated on said plat; and that there are no wetlands or public highways to be designated on said plat other than as shown thereon.

Jeffrey N. Caine
Jeffrey N. Caine, Registered Land Surveyor
Minnesota Registration No. 12251

STATE OF MINNESOTA) The surveyors certificate was acknowledged before me, a Notary Public, this 8th day of April, 1998, by COUNTY OF ANOKA) Jeffrey N. Caine, Land Surveyor.



Jeffrey N. Caine
Notary Public, Anoka County, Minnesota
My Commission expires 01-31-00

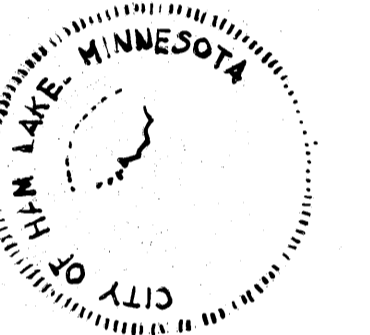
CITY OF HAM LAKE

We hereby certify that the City Council of the City of Ham Lake, Anoka County, Minnesota, duly accepted and approved the plat of BUNKER MEADOWS at a regular meeting held this 6th day of April, 1998. If applicable, the written comments and recommendations of the Commissioner of Transportation and the County Highway Engineer have been received by the city or the prescribed 30 day period has elapsed without receipt of such comments and recommendations, as provided by Minn. Statutes, Section 505.03, Subd. 2.

By [Signature] Mayor By Walter A. Niska Clerk

Checked and approved this 13th day of APRIL, 1998.

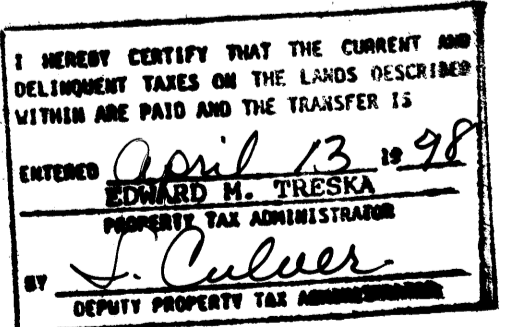
By Terry D. O'Brien deputy
Anoka County Surveyor



1334197.0

OFFICE OF COUNTY RECORDER
STATE OF MINNESOTA, COUNTY OF ANOKA
I hereby certify that the within instrument was filed in this office for record on the APR 13, A.D., 1998.
11 o'clock A.M., and was duly recorded in book 55 page 39.

Edward M. Treska
By [Signature]

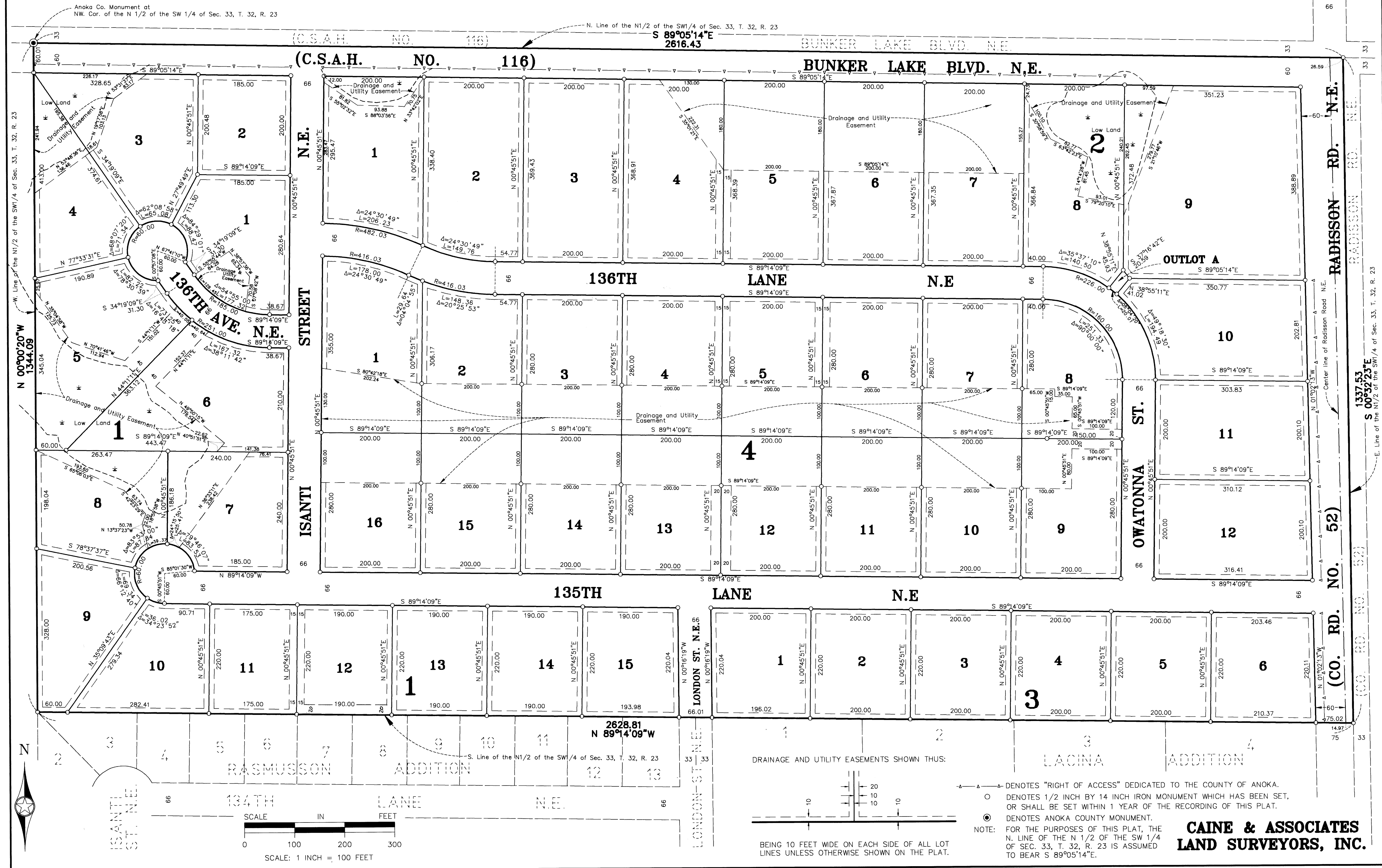


CAINE & ASSOCIATES
LAND SURVEYORS, INC.

BUNKER MEADOWS

CITY OF HAM LAKE

COUNTY OF ANOKA



Anoka Co. Monument at NW. Cor. of the N 1/2 of the SW 1/4 of Sec. 33, T. 32, R. 23

N. Line of the N1/2 of the SW1/4 of Sec. 33, T. 32, R. 23 S 89°05'14"E 2616.43

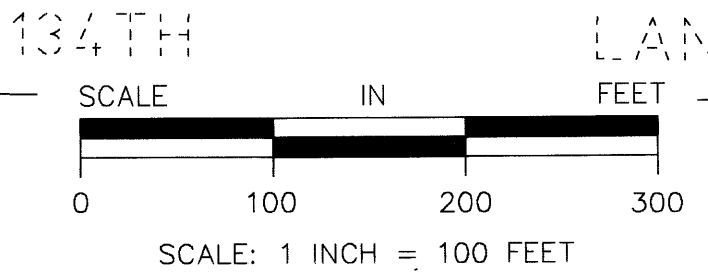
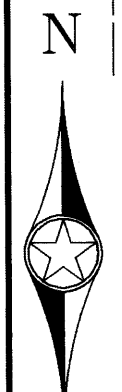
(C.S.A.H. NO. 116)

BUNKER LAKE BLVD. N.E.

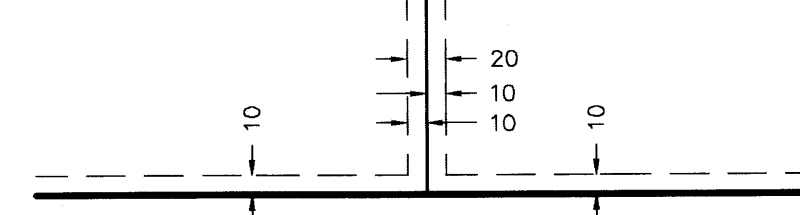
W. Line of the N1/2 of the SW1/4 of Sec. 33, T. 32, R. 23

N 00°00'20"W 1344.09

Low Land



DRAINAGE AND UTILITY EASEMENTS SHOWN THUS:



- A — A — DENOTES "RIGHT OF ACCESS" DEDICATED TO THE COUNTY OF ANOKA.
- DENOTES 1/2 INCH BY 14 INCH IRON MONUMENT WHICH HAS BEEN SET, OR SHALL BE SET WITHIN 1 YEAR OF THE RECORDING OF THIS PLAT.
- DENOTES ANOKA COUNTY MONUMENT.
- NOTE: FOR THE PURPOSES OF THIS PLAT, THE N. LINE OF THE N 1/2 OF THE SW 1/4 OF SEC. 33, T. 32, R. 23 IS ASSUMED TO BEAR S 89°05'14"E.

CAINE & ASSOCIATES
LAND SURVEYORS, INC.