

288479.0

# BUSINESS PARK 95 THIRD ADDITION

CITY OF RAMSEY  
COUNTY OF ANOKA

Office of Registrar of Titles  
City of Ramsey  
Notary Public - Minnesota  
Hennepin County  
My Comm. Exp. Jan. 31, 2000  
OCT 28 1996  
P. 12  
Katharine Beer  
Deputy Registrar of Titles

KNOW ALL PERSONS BY THESE PRESENTS: That the City of Ramsey, a Minnesota Municipal Corporation, fee owner of the following described property situated in the County of Anoka, State of Minnesota to wit:

Outlots C and F, BUSINESS PARK 95 SECOND ADDITION, Anoka County, Minnesota.

Has caused the same to be surveyed, platted and known as BUSINESS PARK 95 THIRD ADDITION and do hereby donate and dedicate to the public for public use forever the drainage and utility easements as shown on this plat. In witness whereof said City of Ramsey, a Minnesota Municipal Corporation, has caused these presents to be signed by Glen D. Hardin, as Mayor, and Ryan R. Schroeder, as City Clerk, and its corporate seal to be hereunto affixed this 16<sup>th</sup> day of October, 1996.

CITY OF RAMSEY

Glen D. Hardin  
Glen D. Hardin, Mayor

Ryan R. Schroeder  
Ryan R. Schroeder, City Clerk

STATE OF MINNESOTA  
COUNTY OF Anoka

The foregoing instrument was acknowledged before me this 16<sup>th</sup> day of October, 1996, by Glen D. Hardin, as Mayor, and Ryan R. Schroeder, as City Clerk, of the City of Ramsey, a Minnesota Municipal Corporation, on behalf of the Municipal Corporation.



Catherine A. Gray  
Notary Public, Anoka County, Minnesota  
My Commission Expires 1-31-2000

I hereby certify that I have surveyed and platted the property on this plat as BUSINESS PARK 95 THIRD ADDITION; that this plat is a correct representation of said survey; that all distances are correctly shown on said plat in feet and hundredths of a foot; that all monuments have been correctly placed in the ground as shown on said plat or will be placed as required by the local governmental unit as designated on said plat; that the outside boundary lines are correctly designated on said plat; and that there are no wetlands as defined in MS 505.02, subd. 1, or public highways to be designated other than as shown.

Charles R. Christopherson  
Charles R. Christopherson, Land Surveyor  
Minnesota Registration No. 18420

STATE OF MINNESOTA  
COUNTY OF ANOKA

The foregoing instrument was acknowledged before me this 11<sup>th</sup> day of October, 1996, by Charles R. Christopherson, Land Surveyor.



Catherine A. Gray  
Notary Public, Hennepin County, Minnesota  
My Commission Expires January 31, 2000

RAMSEY, MINNESOTA

This plat of BUSINESS PARK 95 THIRD ADDITION was approved and accepted by the City Council of Ramsey, Minnesota, at a regular meeting thereof held this 9<sup>th</sup> day of September, 1996. If applicable, the written comments and recommendations of the Commissioner of Transportation and the County Highway Engineer have been received by the City or the prescribed 30 day period has elapsed without receipt of such comments and recommendations, as provided by Minn. Statutes Section 505.03, Subd. 2.

CITY COUNCIL OF THE CITY OF RAMSEY, MINNESOTA

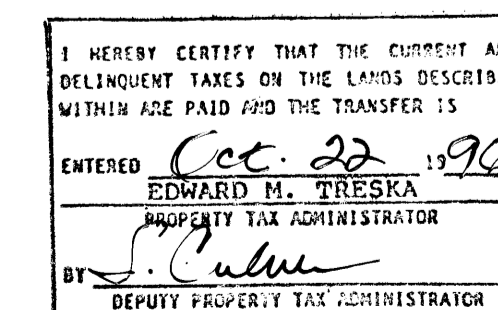
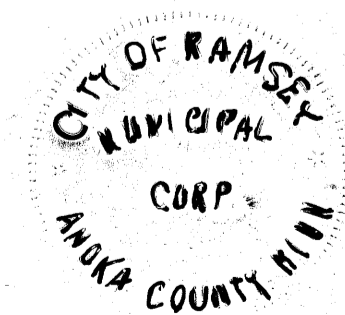
Glen D. Hardin  
Glen D. Hardin, Mayor

Ryan R. Schroeder  
Ryan R. Schroeder, City Clerk

ANOKA COUNTY SURVEYOR

This plat was checked and approved on this 22<sup>nd</sup> day of OCTOBER, 1996.

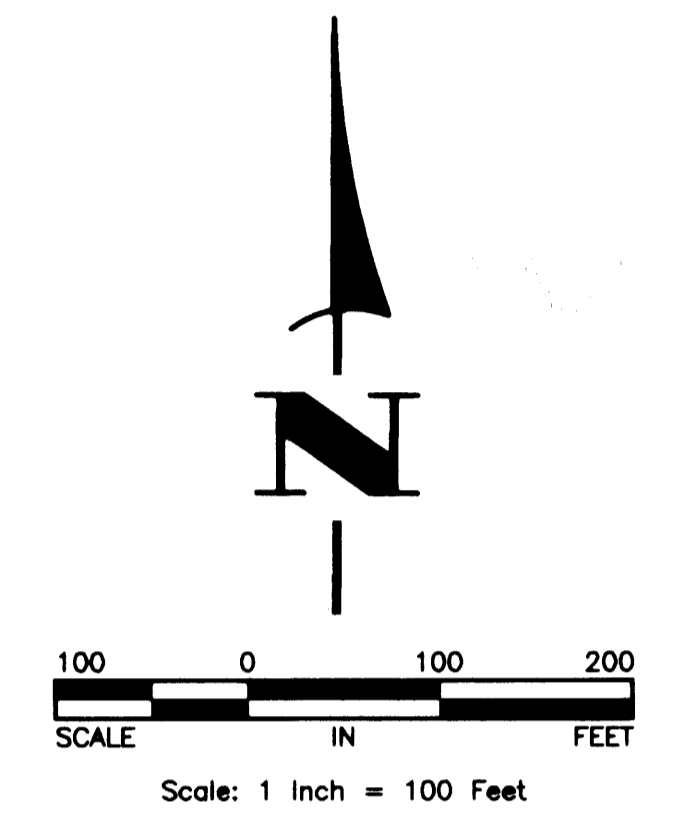
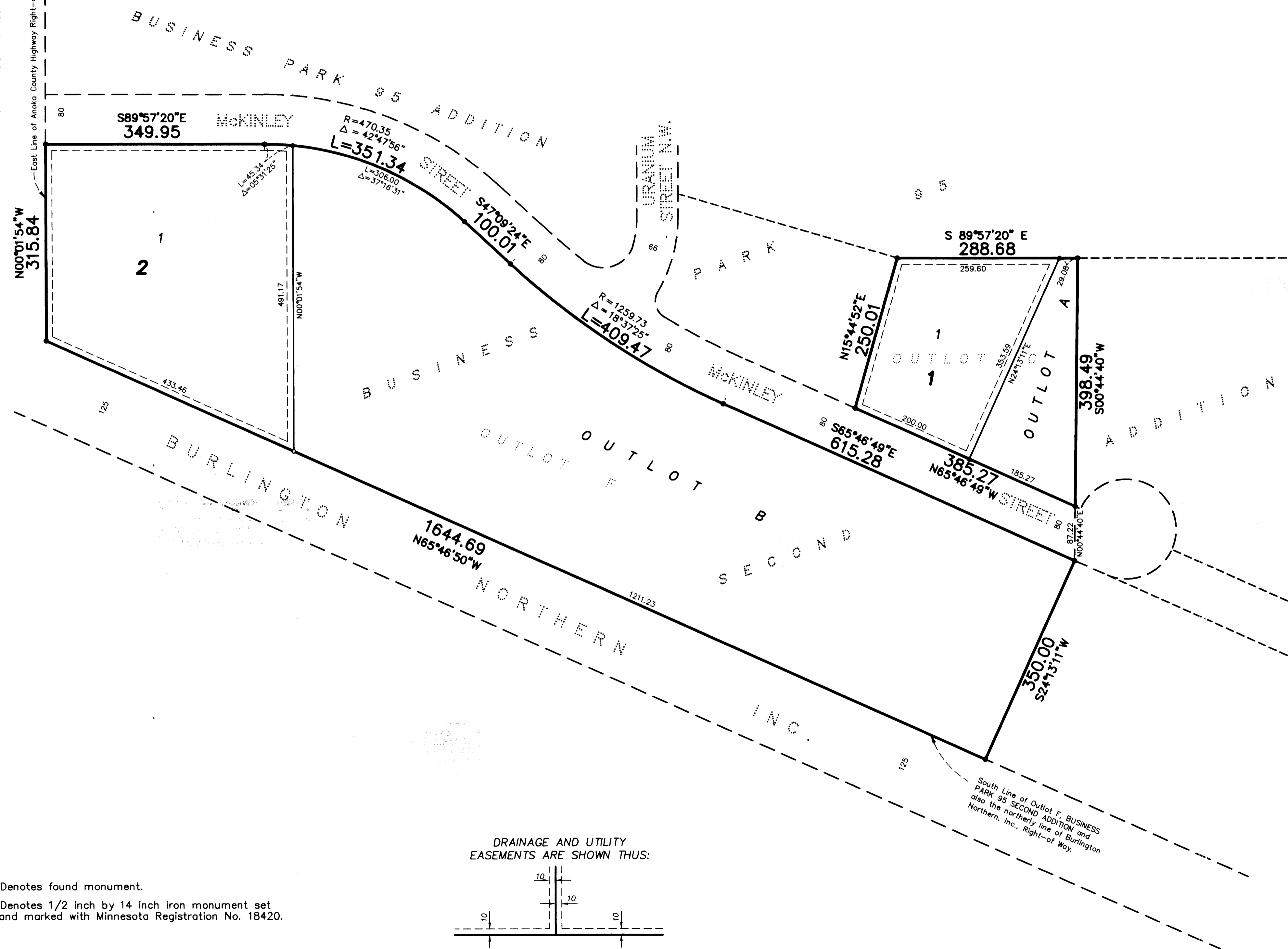
Merlyn D. Anderson  
Merlyn D. Anderson, Anoka County Surveyor  
by Larry D. Stein  
deputy



# BUSINESS PARK 95 THIRD ADDITION

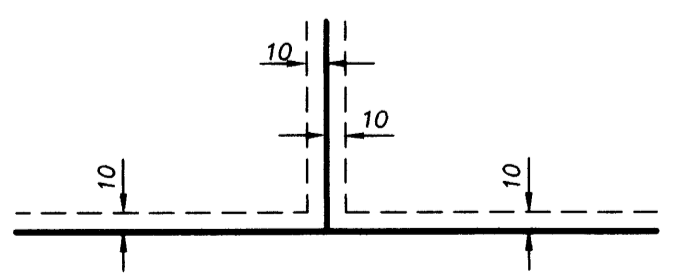
CITY OF RAMSEY COUNTY OF ANOKA

SUNFISH LAKE BLVD. (C.S.A.H. NO. 57)  
ANOKA COUNTY HIGHWAY RIGHT-OF-WAY PLAT NO. 1



- Denotes found monument.
- Denotes 1/2 inch by 14 inch iron monument set and marked with Minnesota Registration No. 18420.

DRAINAGE AND UTILITY EASEMENTS ARE SHOWN THUS:



being 10 feet in width and adjoining lot lines, and 10 feet in width and adjoining street lines unless otherwise indicated on the plat.

For the purposes of this plat the northerly R.O.W. line of Burlington Northern Inc. is assumed to bear N65°46'50"W.

South Line of Outlot F, BUSINESS PARK 95 SECOND ADDITION and also the northerly line of Burlington Northern, Inc., Right-of-Way.

