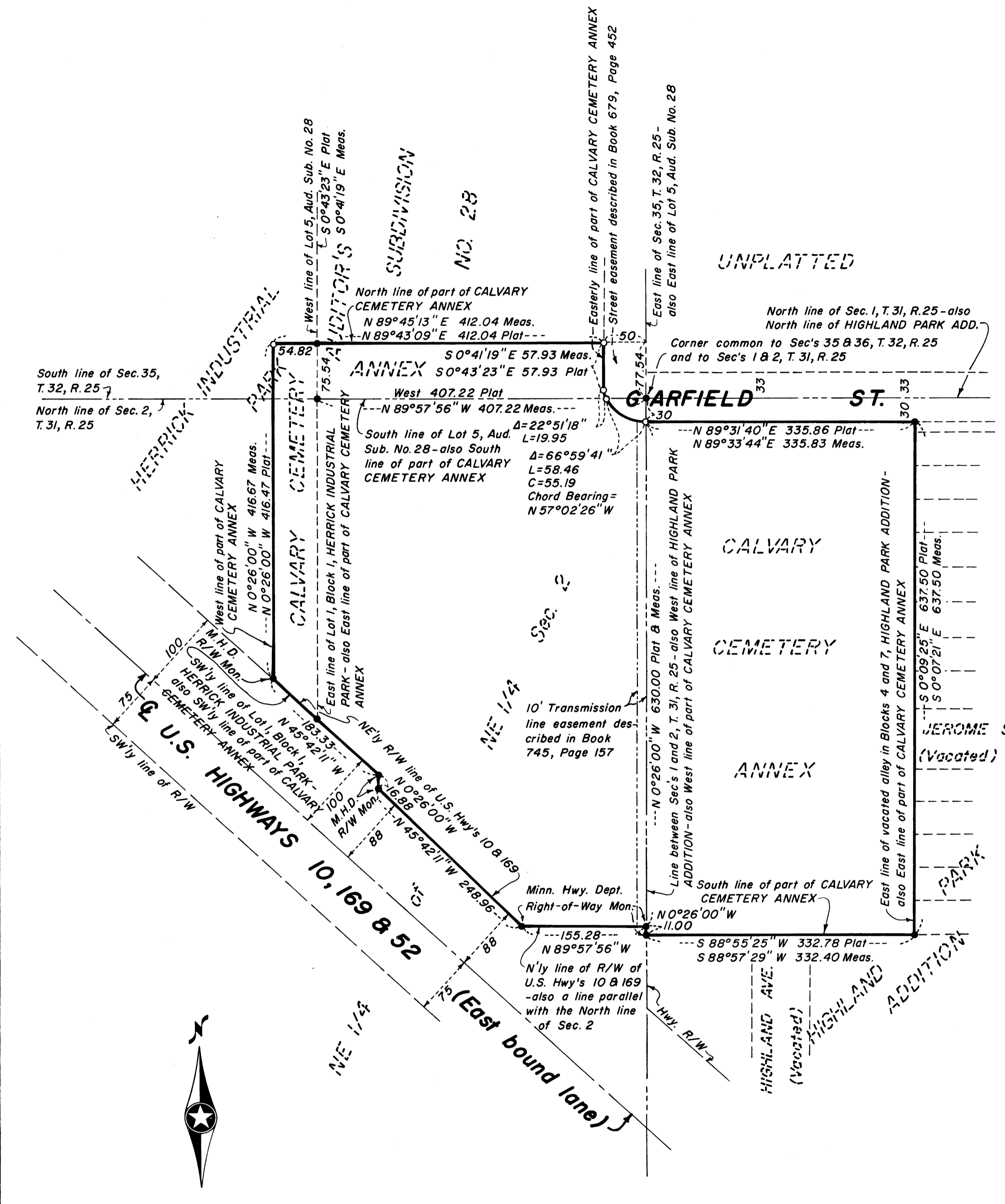


# CALVARY CEMETERY

## City of Anoka Anoka County, Minnesota



South line of Sec. 35, T. 32, R. 25  
North line of Sec. 2, T. 31, R. 25

HERRICK INDUSTRIAL PARK  
West line of part of CALVARY CEMETERY ANNEX  
N 0°26'00" W 416.67 Meas.  
N 0°26'00" W 416.47 Plat

ANNEX  
50°41'19" E 57.93 Meas.  
50°43'23" E 57.93 Plat  
West 407.22 Plat  
N 89°57'56" W 407.22 Meas.

GARFIELD ST.  
North line of Sec. 1, T. 31, R. 25 - also North line of HIGHLAND PARK ADD.  
Corner common to Sec's 35 & 36, T. 32, R. 25 and to Sec's 1 & 2, T. 31, R. 25  
N 89°31'40" E 335.86 Plat  
N 89°33'44" E 335.83 Meas.

CALVARY CEMETERY ANNEX  
CALVARY CEMETERY ANNEX  
ANNEX

JEROME ST.  
(Vacated)  
East line of vacated alley in Blocks 4 and 7, HIGHLAND PARK ADDITION - also East line of part of CALVARY CEMETERY ANNEX  
S 0°09'25" E 637.50 Plat  
S 0°07'21" E 637.50 Meas.

U.S. HIGHWAYS 10, 169 & 52  
N 45°42'17" W 248.95 Meas.  
N 45°42'17" W 248.95 Plat  
N 45°42'17" W 248.95 Plat  
N 45°42'17" W 248.95 Meas.  
N 45°42'17" W 248.95 Plat  
N 45°42'17" W 248.95 Meas.

South line of part of CALVARY CEMETERY ANNEX  
N 0°26'00" W 11.00 Meas.  
S 88°55'25" W 332.78 Plat  
S 88°57'29" W 332.40 Meas.

Scale: 1 inch = 100 feet  
● Denotes Found Iron Monument  
○ Denotes Set Iron Monument  
Bearings are assumed

05322  
Office of REGISTRAR OF TITLES  
STATE OF MINNESOTA  
COUNTY OF ANOKA  
I hereby certify that the within instrument was filed in this office on the 20th day of MAR 20 1975 A.D. 1975 at 2:30 o'clock P.M.  
By: Ed J. Ombahl Registrar of Titles  
By: Colleen Boetta Deputy Registrar of Titles

JOHN OLIVER & ASSOC. INC.  
LAND SURVEYORS  
Elk River, Minn.

"NO DELINQUENT TAXES AND TRANSFER ENTERED"  
March 10 1975  
Charles R. Hofmann  
Auditor, Anoka County  
By: Nancy C. Casper Deputy

MOD 58910 MAR 20 75 21.00 BR

KNOW ALL MEN BY THESE PRESENTS: That we, The Church of St. Stephen of Anoka, Minnesota, also known as St. Stephen's Church of Anoka, a religious corporation under the laws of the State of Minnesota, owners and proprietors of the following described property situated in the State of Minnesota, County of Anoka, to-wit:

All that part of the Northeast Quarter of the Northeast Quarter of Section 2, Township 31, Range 25 lying Northerly and Northerly of the Northeasterly and Northerly lines of the right of way of U.S. Highways #10, #52 and #169 and lying East of the East line of Lot 1, Block 1, of the duly recorded plat of HERRICK INDUSTRIAL PARK, excepting from said Northeast Quarter of the Northeast Quarter all that part thereof taken for Garfield Street. Together with all the land platted as the duly recorded plat of CALVARY CEMETERY ANNEX.

Have caused the same to be surveyed and platted as CALVARY CEMETERY, the same to be occupied exclusively as a cemetery for the burial of the dead, and for purposes necessary and proper thereto and The Church of St. Stephen of Anoka, Minnesota, also known as St. Stephen's Church in Anoka, hereby dedicate the same forever to the purposes herein mentioned. In witness whereof said The Church of St. Stephen of Anoka, Minnesota, also known as St. Stephen's Church in Anoka, has caused these presents to be signed by its proper officers and its corporate seal to be hereunto affixed this 4th day of February, 1975, A.D.

The Church of St. Stephen of Anoka, Minnesota, also known as St. Stephen's Church in Anoka  
By: J. Lloyd Brabant Its Secretary By: Karl M. Wittman Its Vice-President

State of Minnesota  
County of Anoka  
The foregoing instrument was acknowledged before me this 4th day of February 1975, by J. Lloyd Brabant, Secretary and by Karl M. Wittman, Vice-President of The Church of St. Stephen of Anoka, Minnesota, also known as St. Stephen's Church in Anoka, a Minnesota religious corporation, on behalf of the corporation.

Gerald M. Randall Notary Public, Hennepin County, Minnesota  
My Commission Expires Nov. 1, 1977

I hereby certify that I have surveyed and platted the property described in this plat as CALVARY CEMETERY and that this plat is a correct representation of said survey; that all monuments have been correctly placed in the ground as shown on the plat; that all distances are correctly shown on the plat in feet and hundredths of a foot; that the outside boundary lines are correctly designated on the plat; and that there are no wet lands or public highways to be designated on the plat other than as shown thereon.

John O. Oliver  
John O. Oliver, Land Surveyor  
Minnesota Registration No. 8194

State of Minnesota  
County of Sherburne  
The surveyors certificate was subscribed and sworn to before me this 20th day of February, 1974, A.D.

Dolores A. Kratzke Notary Public, Sherburne County, Minnesota  
My Commission Expires Nov. 25, 1977

This plat was approved and accepted by the Planning Commission of the City of Anoka, Anoka County, Minnesota at a meeting held this 24th day of Feb., 1975, A.D.

By: John A. Mann, Chairman

This plat was approved and accepted by the City Council of the City of Anoka of Anoka County, Minnesota at a meeting held this 18th day of February, 1975, A.D.

Attest: Alfred J. Hesse Clerk By: David B. Stewart Mayor

Approved as to form and execution this 18th day of February, 1975, A.D.  
David E. Coleman Anoka City Attorney

Checked and approved this 3rd day of January, 1975, A.D.

Robert W. Anderson Anoka County Surveyor

423999  
OFFICE OF REGISTER OF DEEDS  
STATE OF MINNESOTA, COUNTY OF ANOKA  
I hereby certify that the within instrument was filed in this office for record on the MAR 20 1975 A.D. 1975

at 2:00 o'clock P.M., and was duly recorded in book 18 of Page 4

Dea J. Ombahl Register of Deeds  
By: Juan Vivero Deputy

ACR 14184 MAR 20 75 5.00 A