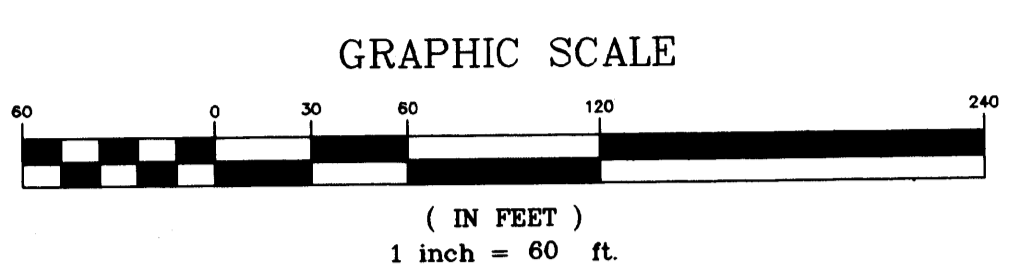
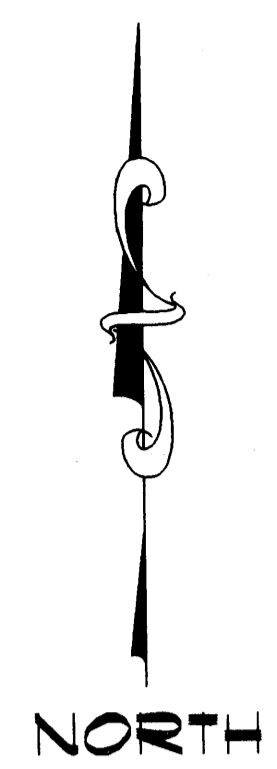


# CARDINAL HAVEN

City of Ham Lake, County of Anoka

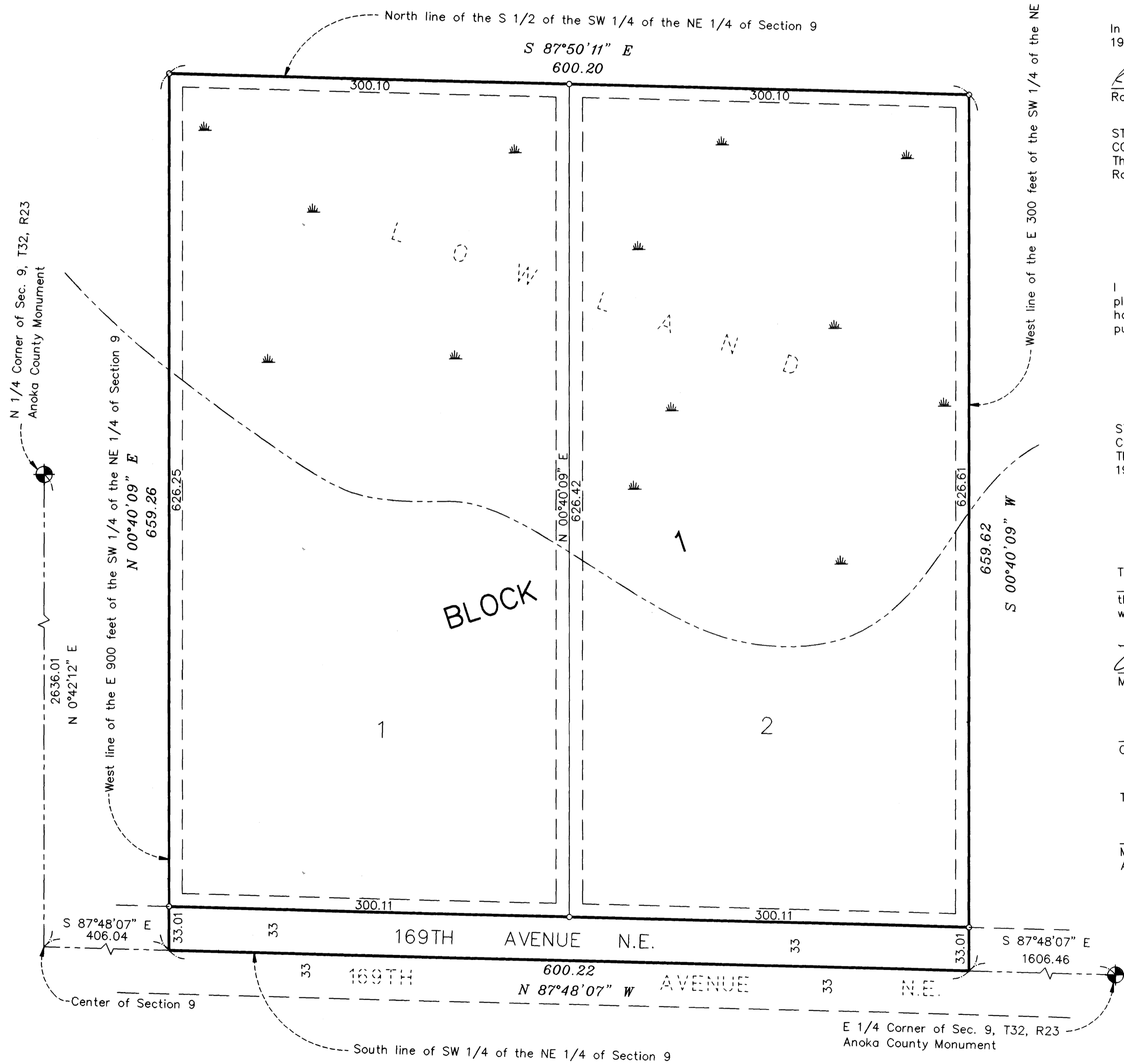
Doc# 1141674  
OFFICE OF COUNTY RECORDER  
MINNESOTA, COUNTY OF ANOKA  
I certify that the within instrument  
was filed in this office for record  
on the 12<sup>th</sup> day of Nov. A.D. 1994  
at 12:31 o'clock P.M. and was duly recorded  
in book 49 page 22  
Edward M. Truola  
County Recorder  
By J. Seefeld  
D.U.



THE ORIENTATION OF THIS BEARING SYSTEM IS  
BASED ON THE SOUTH LINE OF THE NE 1/4  
HAVING A BEARING OF N 87°48'07" W.

o DENOTES SET 1/2" X 18" IRON MONUMENT  
MARKED R.L.S. 9808, UNLESS OTHERWISE  
SHOWN ON PLAT.

West line of the E 300 feet of the SW 1/4 of the NE 1/4 of Section 9



KNOW ALL PERSONS BY THESE PRESENTS: That Randy Kenneth Cardinal, a single person, owner of the following described property situated in the County of Anoka, State of Minnesota to wit:

The west 600 feet of the east 900 feet of the South Half of the Southwest Quarter of the Northeast Quarter of Section 9, Township 32, Range 23, Anoka County, Minnesota.

Has caused the same to be surveyed and platted as CARDINAL HAVEN and does hereby donate and dedicate to the public for the public use forever the avenue and also dedicates the drainage and utility easements as shown on the plat for drainage and utility purposes only.

In witness whereof said Randy Kenneth Cardinal, a single person has hereunto set his hand this 24th day of October, 1994.

Randy Kenneth Cardinal  
Randy Kenneth Cardinal

STATE OF MINNESOTA  
COUNTY OF Anoka  
This instrument was acknowledged before me this 24th day of October, 1994, by  
Randy Kenneth Cardinal, a single person.

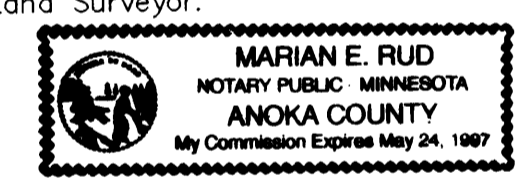


Marian E. Rud  
Notary Public, Anoka County, Minnesota  
My Commission Expires May 24, 1997

I Ernest G. Rud, hereby certify that I have surveyed and platted the property described in the dedication of this plat as CARDINAL HAVEN; that the plat is a correct representation of said survey; that all distances are correctly shown on said plat in feet and hundredths of a foot; that the monuments have been correctly placed in the ground as shown; that the outside boundaries are correctly designated on said plat; and that there are no wet lands or public highways other than shown thereon.

Ernest G. Rud  
Ernest G. Rud, Land Surveyor  
Minnesota Registration No. 9808

STATE OF MINNESOTA  
COUNTY OF ANOKA  
The surveyor's certificate was acknowledged before me, a Notary Public, this 19th day of October, 1994, by Ernest G. Rud, Registered Land Surveyor.



Ernest G. Rud  
Notary Public, Anoka County, Minnesota  
My Commission Expires May 24, 1997

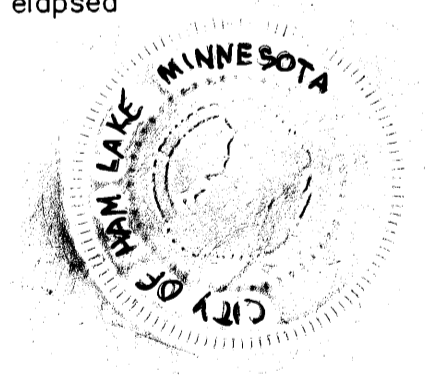
This plat of CARDINAL HAVEN was approved by the City Council of the City of Ham Lake, Minnesota, at a regular meeting thereof held this 6th day of September, 1994. If applicable, the written comments and recommendations of the Commissioner of Transportation and the County Highway Engineer have been received by the City or the prescribed 30 day period has elapsed without receipt of such comments and recommendations, as provided by Minnesota Statutes Section 505.03, Subdivision 2.

Deanna Nelson  
Mayor

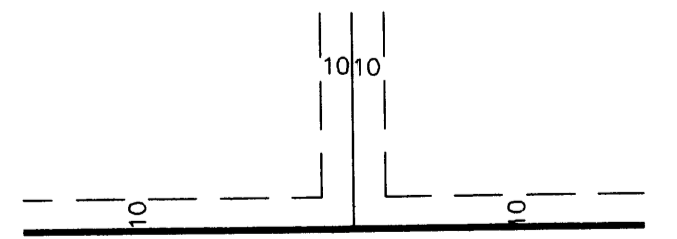
Heidi A. Niska  
Clerk

This plat has been checked and approved this 1st day of Nov., 1994.

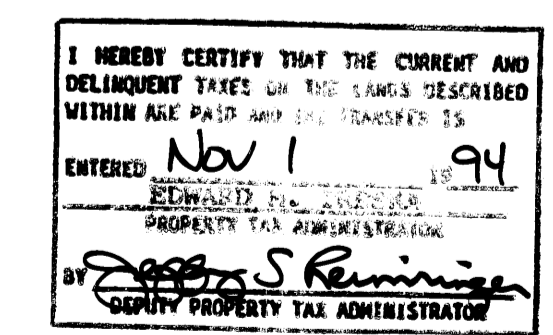
Merlyn D. Anderson  
Merlyn D. Anderson  
Anoka County Surveyor



DRAINAGE AND UTILITY EASEMENTS SHOWN THUS:



BEING 10 FEET IN WIDTH AND ADJOINING SIDE LOT LINES AND REAR LOT LINES, AND 10 FEET IN WIDTH, AND ADJOINING STREET LINES, AS SHOWN ON THE PLAT.



**E. G. RUD & SONS, INC.**  
Land Surveyors

