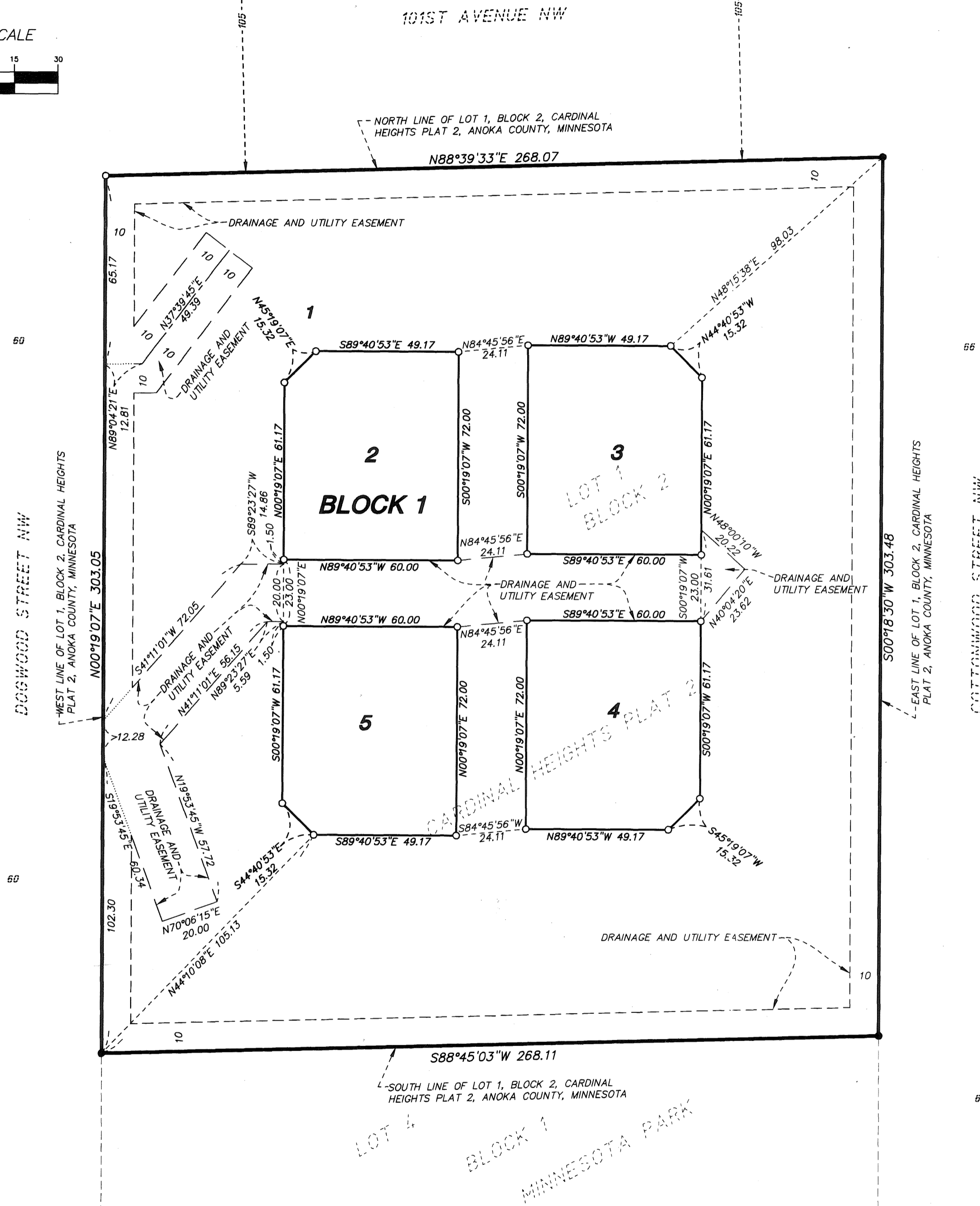
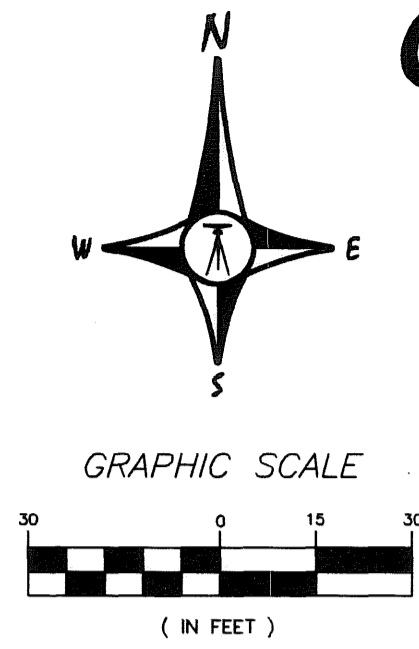


CARDINAL HEIGHTS OFFICE COMPLEX



NOTE REGARDING WETLANDS

The Minnesota Department of Natural Resources, United States Corps of Engineers and other water management agencies have categorized various wetlands, which are not acknowledged by Chapter 505.02, Subdivision 1 of Minnesota Statutes and may not be shown hereon. Development of lands containing said wetlands may be subject to special conditions or limitations.

BEARING NOTE

For the purposes of this plat, the South line of Lot 1, Block 2, Cardinal Heights Plat 2 is assumed to bear South 88 degrees 45 minutes 03 seconds West.

LEGEND

- DENOTES FOUND IRON PIPE
- DENOTES IRON PIPE WITH PLASTIC CAP MARKED R.L.S. NO. 16091

1992302.001
 OFFICE OF COUNTY RECORDER
 STATE OF MINNESOTA, COUNTY OF ANOKA
 I hereby certify that the within instrument was filed in this office for record on the 12th April A.D., 2007 at 9:50 o'clock A.M. and was duly recorded in book 73 Abst. page 14.
Maureen J Devine
 County Recorder
 LBS

Book 73 of Abst. pg 14

CITY OF COON RAPIDS
 ANOKA COUNTY
 SEC. 25. TWP. 31, RING. 24

I HEREBY CERTIFY THAT THE CURRENT AND DELINQUENT TAXES ON THE LANDS DESCRIBED WITHIN ARE PAID AND THE TRANSFER IS ENTERED
April 12, 2007
Maureen J. Devine
 PROPERTY TAX ADMINISTRATOR
 BY S. Culver
 DEPUTY PROPERTY TAX ADMINISTRATOR

KNOW ALL MEN BY THESE PRESENTS: That MJM Partnership, LLC, a Minnesota limited liability company, fee owner of the following described property situated in the County of Anoka, State of Minnesota, to wit:

Lot 1, Block 2, CARDINAL HEIGHTS PLAT 2, according to the recorded plat thereof, Anoka County, Minnesota.

Has caused the same to be surveyed and platted as CARDINAL HEIGHTS OFFICE COMPLEX and does hereby donate and dedicate the drainage and utility easements shown on this plat for drainage and utility purposes only.

In witness whereof MJM Partnership, LLC, a Minnesota limited liability company has caused these presents to be signed by it's proper officers this 10th day of Feb, 2007.

[Signature]
 Michael E. Thompson, Chief Manager
 of MJM Partnership, LLC

[Signature]
 Michael R. Zigler, Member
 of MJM Partnership, LLC

[Signature]
 James O. Retrum, Jr, Member
 of MJM Partnership, LLC

STATE OF MINNESOTA
 COUNTY OF Anoka The foregoing instrument was acknowledged before me this 10th day of Feb, 2007, by Michael E. Thompson, as Chief Manager, Michael R. Zigler, as Member, and James O. Retrum, Jr, as Member, all of MJM Partnership LLC, a Minnesota limited liability company, on behalf of the company.

[Notary Seal]
 LINDSEY MARIE MITSHULLIS
 Notary Public
 Minnesota
 My Commission Expires January 31, 2011

[Signature]
 Notary Public, Anoka County, Minnesota.
 My commission expires 1/31/2011

I, Dale B. Anderson, hereby certify that I have surveyed and platted the property described on this plat as CARDINAL HEIGHTS OFFICE COMPLEX; that this plat is a true and correct representation of said survey; that all distances are correctly shown on the plat in feet and hundredths of a foot; that all monuments will be correctly placed in the ground as shown within one year of recording; that the outside boundary lines are correctly designated; and that there are no wet lands, easements, or public highways to be designated on said plat other than shown thereon. (Subject to notation regarding wetlands shown on this plat.)

[Signature]
 Dale B. Anderson, Land Surveyor
 Minnesota License Number 16091

STATE OF MINNESOTA
 COUNTY OF Isanti The foregoing Surveyor's Certificate was acknowledged before me this 1st day of February, 2007 by Dale B. Anderson, Land Surveyor, Minnesota License Number 16091.

[Notary Seal]
 CHRISTINE S. HANSON
 Notary Public
 Minnesota
 My Commission Expires Jun. 31, 2010

[Signature]
 Notary Public, Isanti County, Minnesota.
 My commission expires January 31, 2010

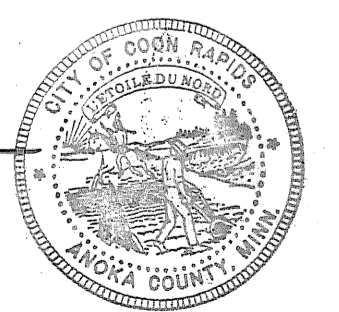
The plat of CARDINAL HEIGHTS OFFICE COMPLEX was approved by the planning and zoning commission of the City of Coon Rapids, Anoka County, Minnesota, at a regular meeting thereof held this 19th day of OCTOBER, 2006.

[Signature]
 Chairperson

This plat of CARDINAL HEIGHTS OFFICE COMPLEX was approved and accepted by the City Council of the City of Coon Rapids, Minnesota, at a regular meeting thereof held this 21st day of November, 2006.
 If applicable, the written comments and recommendations of the Commissioner of Transportation and the County Highway Engineer have been received by the City or the prescribed 30-day period has elapsed without receipt of such comments and recommendations, as provided by Minnesota Statutes, Section 505.03, Subd. 2.

[Signature]
 Mayor

[Signature]
 Clerk



Anoka County Surveyor:

This plat has been approved this 12th day of APRIL, 2007.

[Signature]
 Anoka County Surveyor

ANDERSON LAND SURVEYING
 A DIVISION OF PASSE ENGINEERING, INC.
 CIVIL ENGINEERS • LAND SURVEYORS
 CAMBRIDGE, MN 55008