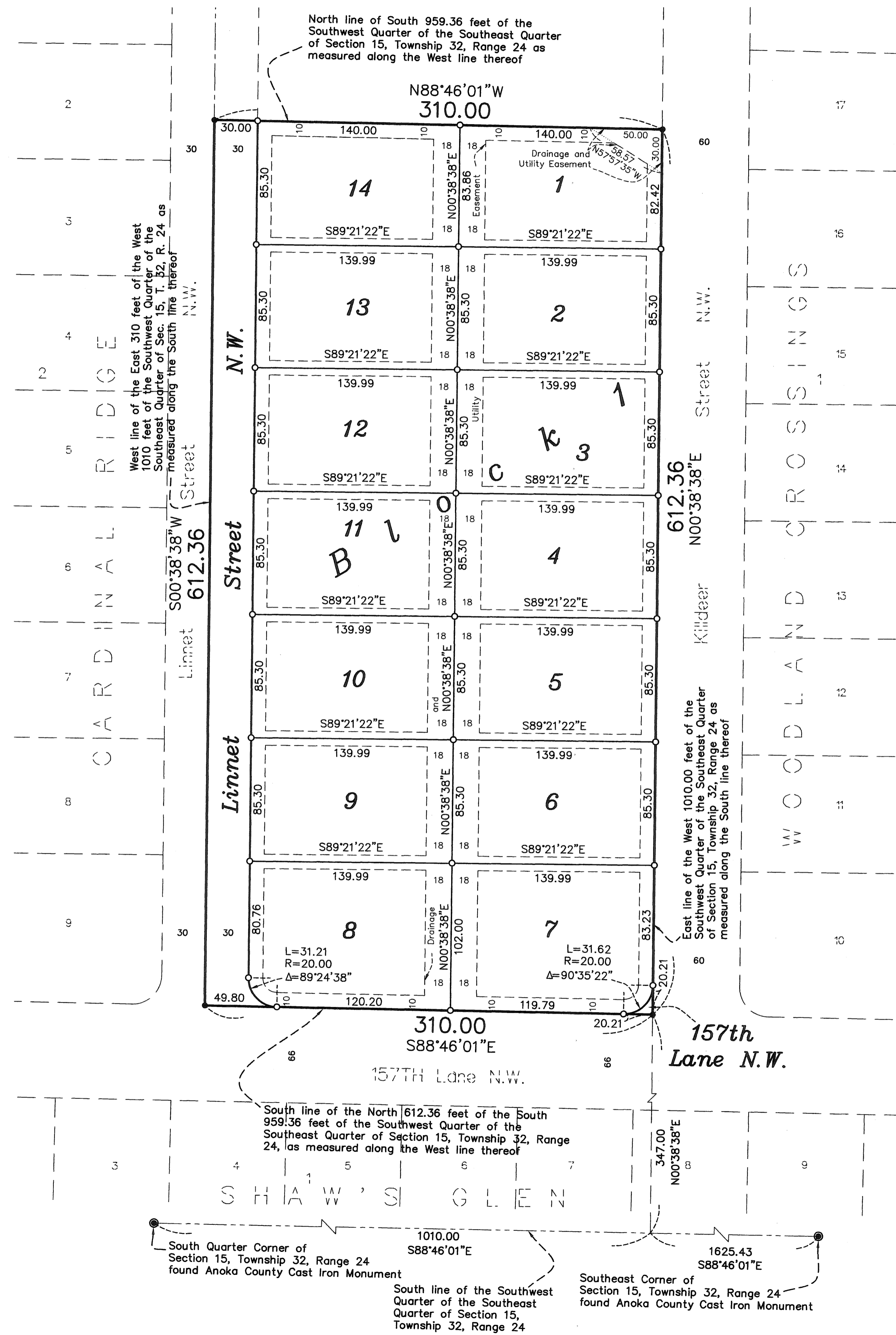


CARDINAL RIDGE SECOND ADDITION

BK 75 Abst PG 9

CITY OF ANDOVER
COUNTY OF ANOKA
SECTION 15, T. 32, R. 24



KNOW ALL PERSONS BY THESE PRESENTS: That Minks Land Development, LLC, a Minnesota Limited Liability Company, fee owner of the following described property situated in the County of Anoka, State of Minnesota to wit:

The East 310 feet of the West 1010 feet of the North 612.36 feet of the South 959.36 feet of the Southwest Quarter of the Southeast Quarter of Section 15, Township 32, Range 24, Anoka County, Minnesota, as measured along the West and South lines of said Southwest Quarter of the Southeast Quarter.

Has caused the same to be surveyed and platted as CARDINAL RIDGE SECOND ADDITION and does hereby donate and dedicate to the public for public use forever the public ways and the drainage and utility easements as shown on this plat. In witness whereof said Minks Land Development, LLC, a Minnesota Limited Liability Company, has caused these presents to be signed by its Chief Manager this 4th day of August, 2009.

MINKS LAND DEVELOPMENT, LLC

Ben D. Minks
Ben D. Minks as Chief Manager

STATE OF MINNESOTA, COUNTY OF ANOKA

The foregoing instrument was acknowledged before me this 4th day of AUGUST, 2009 by Ben D. Minks, as Chief Manager, of Minks Land Development, LLC, a Minnesota Limited Liability Company, on behalf of the company.



Michelle L. Hartner
Notary Public, Minnesota
My Commission Expires: 1-31-10

I, Charles R. Christopherson, a duly Licensed Land Surveyor under the laws of the State of Minnesota, do hereby certify that I surveyed or directly supervised the survey of the property described on this plat; prepared this plat or directly supervised the preparation of this plat of CARDINAL RIDGE SECOND ADDITION; this plat is a correct representation of the boundary survey; that all mathematical data and labels are correctly designated on this plat; that all monuments depicted on this plat have been, or will be correctly set within one year as indicated on this plat; that all water boundaries and wet lands, as defined in Minnesota Statutes 505.01, Subd. 3, as of the date of this certification are shown and labeled on this plat; and that all public ways are shown and labeled on this plat.

Charles R. Christopherson
Charles R. Christopherson, Professional Land Surveyor
Minnesota Registration No. 18420

STATE OF MINNESOTA, COUNTY OF ANOKA

The foregoing Surveyor's Certificate was acknowledged before me this 27th day of July, 2009 by Charles R. Christopherson, Professional Land Surveyor.

Larry K. Affield
Larry K. Affield
Notary Public, Minnesota
My Commission Expires: JANUARY 31, 2010

2010078.002
OFFICE OF COUNTY RECORDER
STATE OF MINNESOTA, COUNTY OF ANOKA
I hereby certify that the within instrument was filed in this office for record on the 10th Sept 2009 A.D., 10:08 o'clock A.M., and was duly recorded in book 75 Abst page 9
Maureen J. Devine
County Recorder
By BMC Deputy

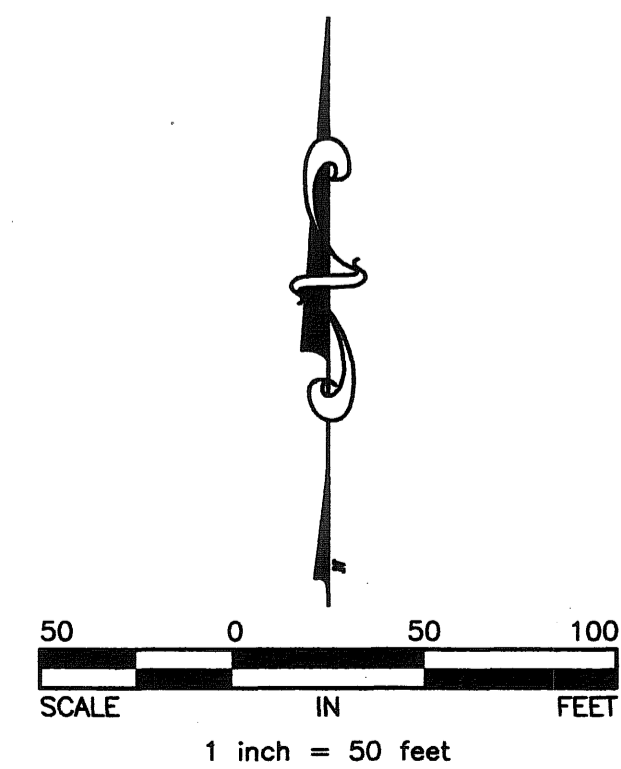
CITY COUNCIL
CITY OF ANDOVER

This plat of CARDINAL RIDGE SECOND ADDITION was approved and accepted by the City Council of the City of Andover, Minnesota at a regular meeting held this 7th day of July, 2009, and said plat is in compliance with the provisions of Minnesota Statutes, Section 505.03, Subd. 2.

Michael R. Jacob as Mayor
Michelle Hartner as City Clerk

This plat of CARDINAL RIDGE SECOND ADDITION was checked and approved by me this 10th day of SEPTEMBER, 2009.

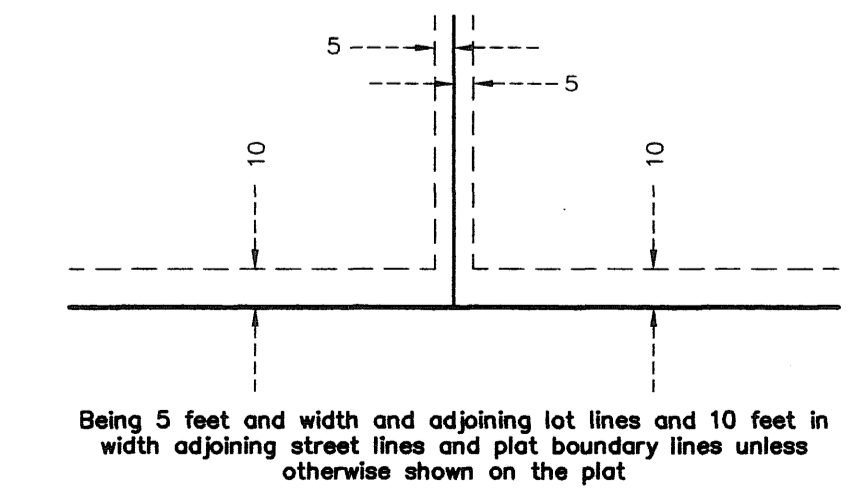
Larry D. Holium
Larry D. Holium, Anoka County Surveyor



For the purposes of this plat the North line of South 959.36 feet of the Southwest Quarter of the Southeast Quarter of Section 15, Township 32, Range 24, as measured along the West line thereof, is assumed to bear North 88 degrees 46 minutes 01 seconds West

- Denotes 1/2 inch by 14 inch iron monument set and marked with Minnesota License No. 18420.
- Denotes iron monument found

DRAINAGE AND UTILITY EASEMENTS ARE SHOWN THUS:



I HEREBY CERTIFY THAT THE CURRENT AND DELINQUENT TAXES ON THE LANDS DESCRIBED WITHIN ARE PAID AND THE TRANSFER IS ENTERED
Sept. 10, 2009
MAUREEN J. DEVINE
PROPERTY TAX ADMINISTRATOR
By S. Culver
DEPUTY PROPERTY TAX ADMINISTRATOR



\$56.00