

# CARLSON'S SUMMIT MANOR ANNEX SECOND ADDITION

C. E. COULTER  
Registered Land Surveyor

KNOW ALL MEN BY THESE PRESENTS: That Arvid E. Carlson & Son, Inc., a Minnesota Corporation, Owners and Proprietors of the following described property situated in the County of Anoka, State of Minnesota, to wit: All of Lots 5, 6 and 7, Block 2; all of Lots 8, 9, 10 and 11 and that part of Lot 7 lying South of the North 35 feet as measured along the West line thereof, Block 1, CARLSON'S SUMMIT MANOR ANNEX, except that part thereof lying within the right of way of State Trunk Highway No. 56, have caused the same to be surveyed and platted as CARLSON'S SUMMIT MANOR ANNEX SECOND ADDITION. Subject to the utility, drainage and storm sewer easements as shown on the annexed plat. In witness whereof the above mentioned Corporation has caused these presents to be signed by its proper officers and its Corporate Seal to be hereunto affixed this 14th day of February 1963 A.D.

E. M. Ignatowicz  
Charles S. Cox } As to Evert A. Carlson  
E. M. Ignatowicz  
Charles S. Cox } As to Chas. W. Root

Signed: Arvid E. Carlson & Son, Inc.,  
Evert A. Carlson President  
Chas. W. Root Secretary

STATE OF MINNESOTA )  
COUNTY OF )

On this 14th day of Feb 1963 A.D., before me a Notary Public, within and for said County and State, personally appeared Evert A. Carlson and Chas. W. Root, to me personally known, who being each by me duly sworn, did say that they are respectively President and Secretary of the Corporation named in the foregoing instrument and that the seal affixed to said instrument is the Corporate Seal of said Corporation, and that said instrument was signed and sealed in behalf of said Corporation by authority of its Board of Directors, and that said Evert A. Carlson and Chas. W. Root acknowledged said instrument to be the free act and deed of said Corporation.

E. M. Ignatowicz  
Notary Public, Hennepin County, Minnesota.  
My Commission Expires Sept 30, 1967

I hereby certify that I have surveyed and platted the land described in the foregoing dedication as CARLSON'S SUMMIT MANOR ANNEX SECOND ADDITION, that this plat is a correct representation of said survey, that all distances are correctly shown on said plat in figures denoting feet and decimals of a foot, that the monuments for the guidance of future surveys have been correctly placed in the ground as shown on the annexed plat, that the outside boundaries of the land are correctly designated on said plat, that there are no wet lands or public highways to be designated on said plat other than are shown thereon.

STATE OF MINNESOTA )  
COUNTY OF )

The above certificate subscribed and sworn to before me, a Notary Public, within and for said County and State, on the 14th day of February 1963 A.D.

C. E. Coulter  
Registered Land Surveyor Minnesota Registration No. 2584

John A. Peterson  
Notary Public, Hennepin County, Minnesota.  
My Commission Expires May 23, 1967

This plat was checked and approved on this 21st day of March 1963 A.D.

By Roland W. Anderson  
Roland W. Anderson, Anoka County, Surveyor

This plat was approved and accepted by the City Council of the City of Fridley, Minnesota, at a regular meeting thereof held this 18th day of February 1963 A.D.

City Council of the City of Fridley, Minnesota  
By William J. Neel Its Mayor  
By Morrison C. Brunson Its Clerk

I HEREBY CERTIFY THAT TAXES FOR THE YEAR 1962 ON THE LANDS DESCRIBED WITHIN ARE PAID

Robert A. Peterson  
County Treasurer  
By L. J. Jannin, Deputy

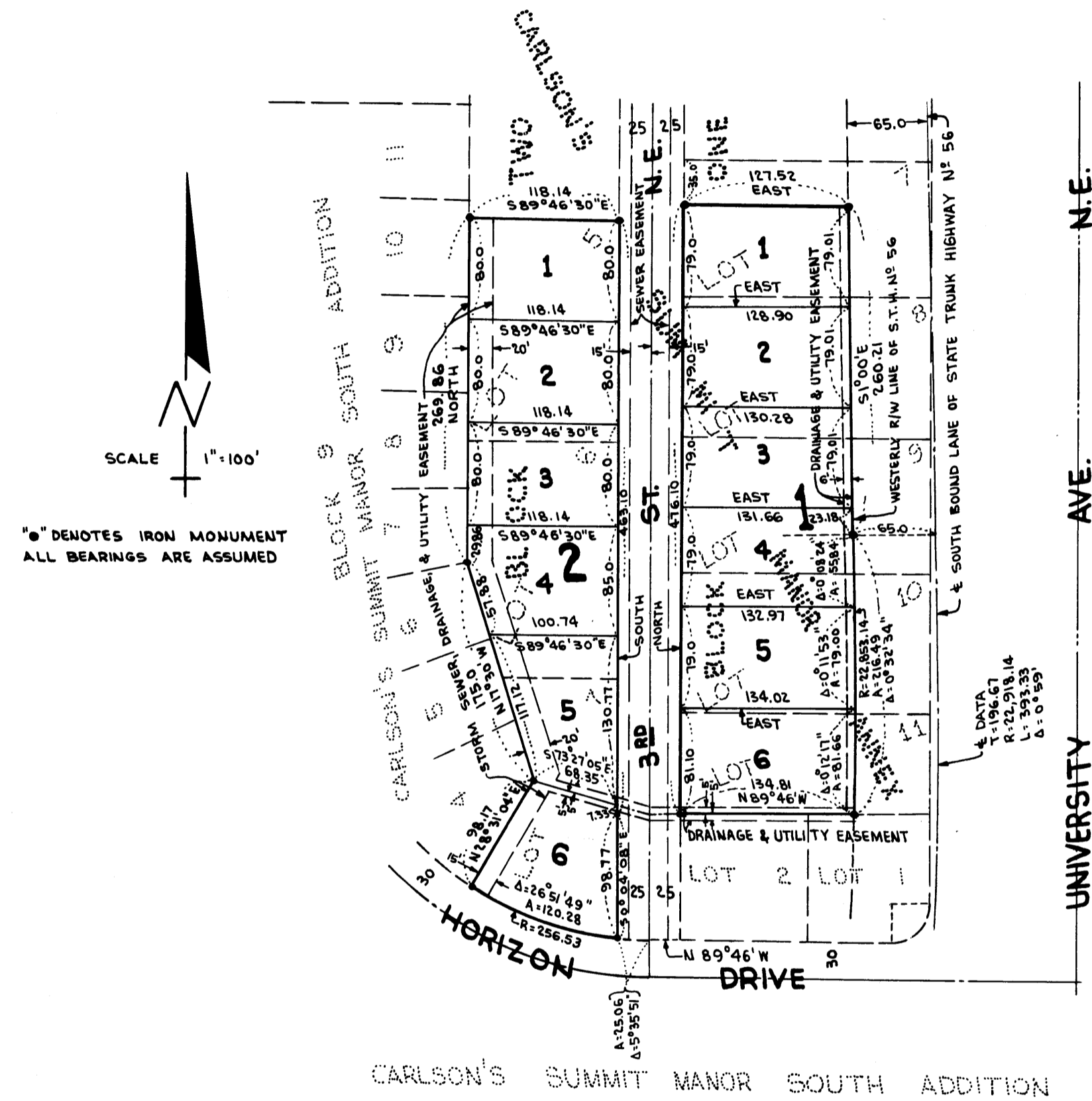
### TAXES PAID

This 21 day of Mar 1963  
Kenneth W. Campbell  
Auditor, Anoka County, Minn.  
By Wayne H. Head, Deputy

OFFICE OF REGISTER OF DEEDS  
STATE OF MINNESOTA, COUNTY OF ANOKA

I hereby certify that the within instrument was filed in this office for record on the 21st day of March, 1963 A.D., at 11:32 o'clock A.M., and was duly recorded in book 2 of Plats page 177

Gertrude Skinner  
Register of Deeds  
By Margaret Russell, Deputy



"6" DENOTES IRON MONUMENT  
ALL BEARINGS ARE ASSUMED

45605