

# CARSON RIDGE

BK 78 A65<sup>st</sup> pg 36  
CITY OF ANDOVER  
COUNTY OF ANOKA  
SEC. 25, T. 32, R. 24

KNOW ALL PERSONS BY THESE PRESENTS: That T.H. Construction of Anoka, Inc., a Minnesota corporation, owner of the following described property:

That part of the Southwest Quarter (SW1/4) of Section Twenty-five (25), Township Thirty-two (32), Range Twenty-four (24), Anoka County, Minnesota, lying East of the East line of Prairie Road right of way and Southerly of a line parallel with the South line of said SW1/4 and 313.30 feet Northerly thereof.

Has caused the same to be surveyed and plotted as CARSON RIDGE and does hereby dedicate to the public for public use the public ways and the drainage and utility easements as shown on this plat.

In witness whereof said T.H. Construction of Anoka, Inc., a Minnesota corporation, has caused these presents to be signed by its proper officer this 25 day of September, 2015.

T.H. CONSTRUCTION OF ANOKA, INC.

*Anthony L. Hennen*  
Anthony L. Hennen, as President

STATE OF MINNESOTA  
COUNTY OF Anoka

This instrument was acknowledged before me this 25<sup>th</sup> day of September, 2015 by Anthony L. Hennen, as President, of T.H. Construction of Anoka Inc., a Minnesota corporation, on behalf of the corporation.

*Kirsten K. Statema*  
Kirsten K. Statema  
Notary Public, Minnesota  
My commission expires 1/31/20

I Charles R. Christopherson do hereby certify that this plat was prepared by me or under my direct supervision; that I am a duly Licensed Land Surveyor in the State of Minnesota; that this plat is a correct representation of the boundary survey; that all mathematical data and labels are correctly designated on this plat; that all monuments depicted on this plat have been, or will be correctly set within one year; that all water boundaries and wet lands, as defined in Minnesota Statutes, Section 505.01, Subd. 3, as of the date of this certificate are shown and labeled on this plat; and all public ways are shown and labeled on this plat.

Dated this 23<sup>rd</sup> day of September, 2015.

*Charles R. Christopherson*  
Charles R. Christopherson, Licensed Land Surveyor  
Minnesota License No. 18420

STATE OF MINNESOTA  
COUNTY OF ANOKA

This instrument was acknowledged before me this 23<sup>rd</sup> day of September, 2015 by Charles R. Christopherson.

*Seth M. Monroe*  
Seth M. Monroe  
Notary Public, Minnesota  
My commission expires January 31, 2019

City Council, City of Andover, Minnesota

This plat of CARSON RIDGE was approved and accepted by the City Council of the City of Andover, Minnesota at a regular meeting thereof held this 7<sup>th</sup> day of OCTOBER, 2014, and said plat is in compliance with the provisions of Minnesota Statutes, Section 505.03, Subd. 2.

City Council, City of Andover, Minnesota

By: *Julie Ornd*, Mayor

By: *Michelle Hartner*, Clerk

ANOKA COUNTY SURVEYOR

I hereby certify that in accordance with Minnesota Statutes, Section 505.021, Subd. 11, this plat has been reviewed and approved this 7<sup>th</sup> day of OCTOBER, 2015.

*Larry D. Holm*  
Larry D. Holm,  
Anoka County Surveyor

ANOKA COUNTY AUDITOR/TREASURER

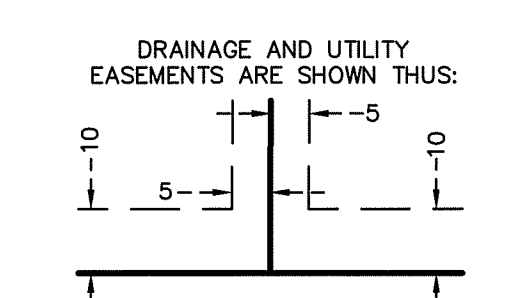
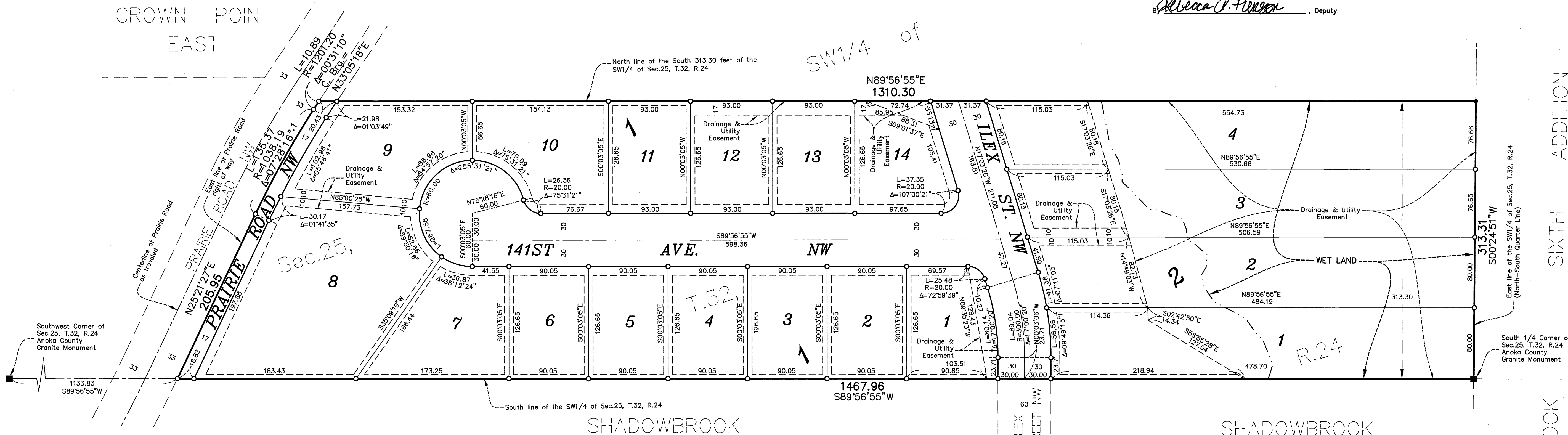
Pursuant to Minnesota Statutes, Section 505.021, Subd. 9, taxes payable in the year 2015 on the land hereinbefore described have been paid. Also, pursuant to Minnesota Statutes, Section 272.12, there are no delinquent taxes and transfer entered this 7<sup>th</sup> day of October, 2015.

*Jonell M. Sawyer*  
Jonell M. Sawyer  
Property Tax Administrator  
By: *Rebecca A. Plimpton*, Deputy

ANOKA COUNTY RECORDER/REGISTRAR OF TITLES

County of Anoka, State of Minnesota  
I hereby certify that this plat of CARSON RIDGE was filed in the office of the County Recorder/Registrar of Titles for public record on this 7<sup>th</sup> day of OCTOBER, 2015, at 3:50 o'clock P.M. and was duly recorded in Book 78A65<sup>st</sup> Page 36, as Document Number 2120016-001.

*Jonell M. Sawyer*  
Jonell M. Sawyer  
County Recorder/Registrar of Titles  
By: *Rebecca A. Plimpton*, Deputy



(NOT TO SCALE)  
Being 10.00 feet in width and adjoining all right of way lines unless otherwise shown on this plat and being 5.00 feet in width and adjoining all side and rear lot lines unless otherwise shown on this plat.

For the purposes of this plat the South Line of the Southwest Quarter of Section 25, Township 32, Range 24 is assumed to bear S89°56'55\"

- Denotes Anoka County Granite Monument
- Denotes 1/2 inch by 14 inch iron monument set and marked with Minnesota License No. 18420.
- Denotes found iron monument
- Denotes edge of Wet Land

