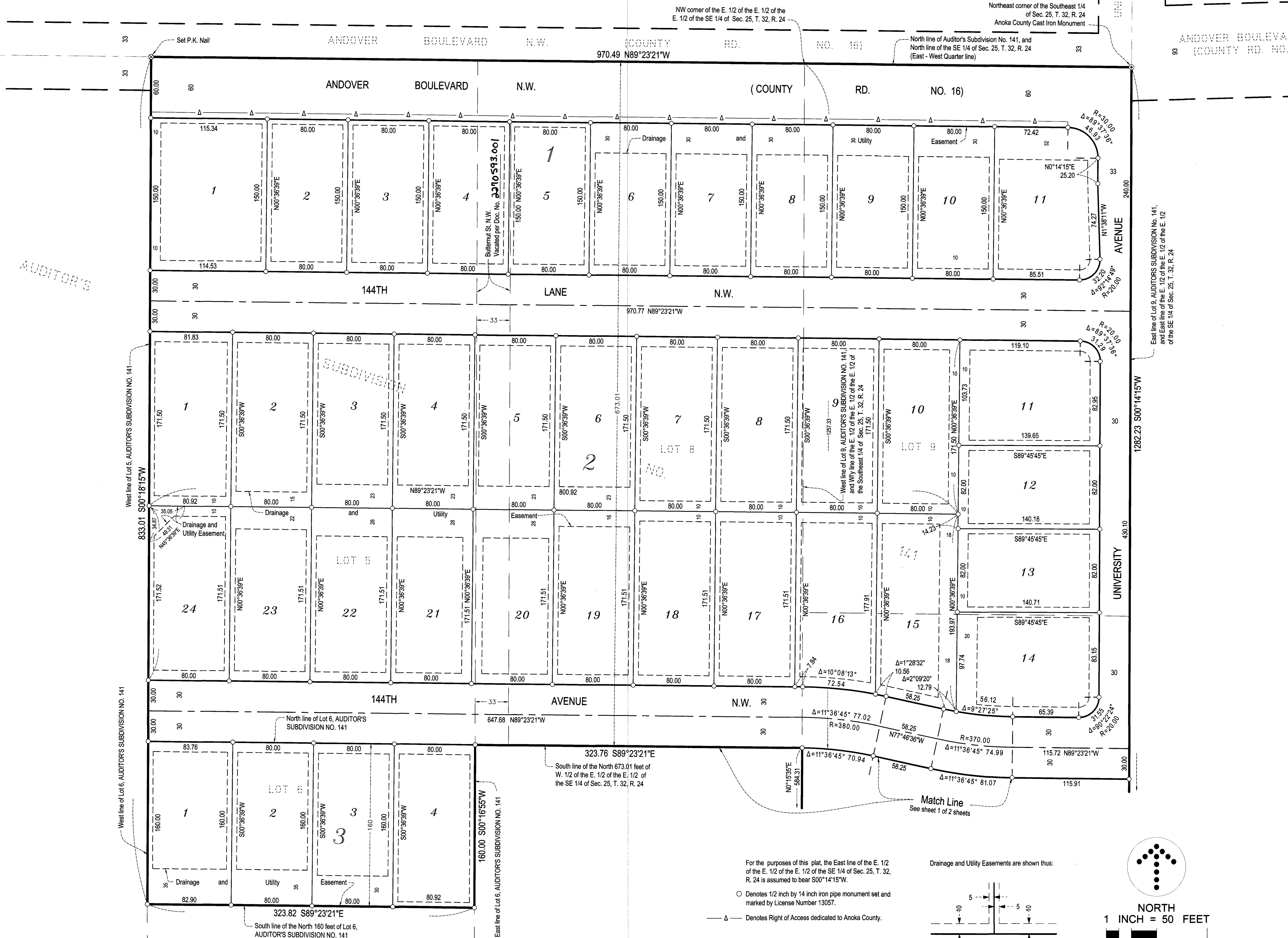


CATCHERS CREEK EAST

City of Andover
County of Anoka
Sec. 25, T. 32, R. 24

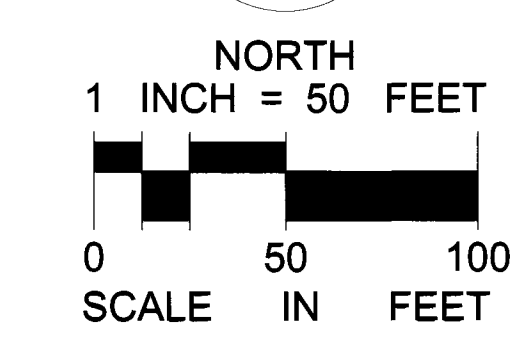
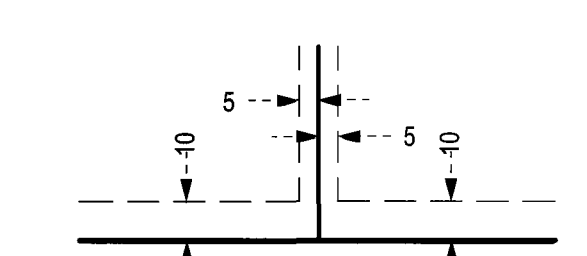


For the purposes of this plat, the East line of the E. 1/2 of the E. 1/2 of the SE 1/4 of Sec. 25, T. 32, R. 24 is assumed to bear S00°14'15"W.

○ Denotes 1/2 inch by 14 inch iron pipe monument set and marked by License Number 13057.

—△— Denotes Right of Access dedicated to Anoka County.

Drainage and Utility Easements are shown thus:



LANDFORM
From Site to Finish

\$56.00