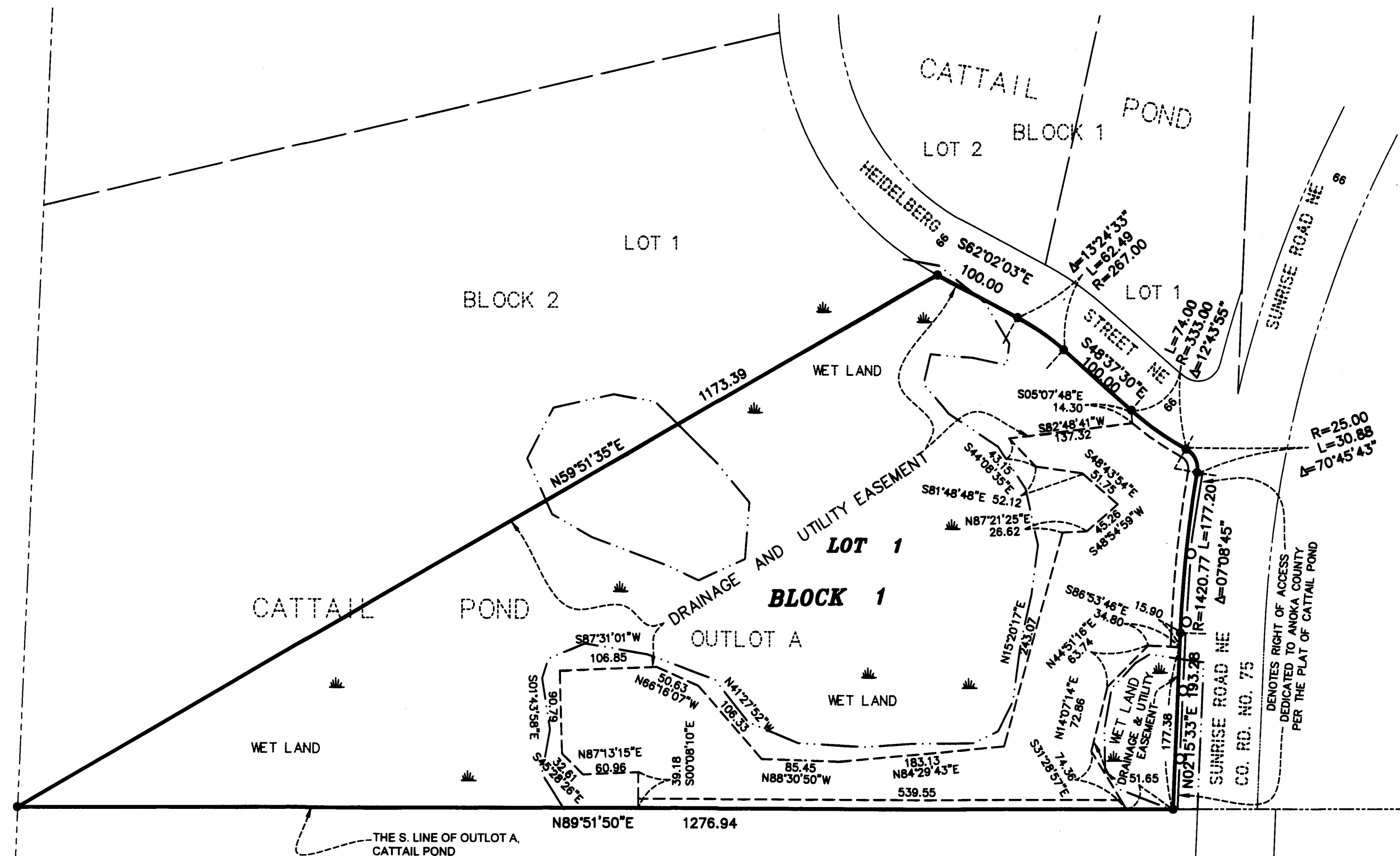


CATTAIL POND PLAT 2

TOWNSHIP OF LINWOOD
COUNTY OF ANOKA
SEC. 11, T. 33, R. 22



KNOW ALL PERSONS BY THESE PRESENTS: That Gregory K. Radefeldt and Nancy L. Radefeldt, husband and wife, owners of the following described property:

Outlot A, CATTAIL POND, Anoka County, Minnesota.

Have caused the same to be surveyed and platted as CATTAIL POND PLAT 2 and do hereby dedicate to the public for public use the drainage and utility easements as shown on this plat.

In witness whereof said Gregory K. Radefeldt and Nancy L. Radefeldt, husband and wife, have hereunto set their hands this 7th day of June, 2017.

Gregory K. Radefeldt
Gregory K. Radefeldt

Nancy L. Radefeldt
Nancy L. Radefeldt

STATE OF MINNESOTA
COUNTY OF Chicago

This instrument was acknowledged before me this 7th day of June, 2017 by Gregory K. Radefeldt and Nancy L. Radefeldt, husband and wife.

Rachell Jo. Francon

Rachell Jo. Francon
Notary Public, Minnesota
My Commission Expires 1/31/2019

I Kelly L. Jordan do hereby certify that this plat was prepared by me or under my direct supervision; that I am a duly Licensed Land Surveyor in the State of Minnesota; that this plat is a correct representation of the boundary survey; that all mathematical data and labels are correctly designated on this plat; that all monuments depicted on this plat have been, or will be correctly set within one year; that all water boundaries and wet lands, as defined in Minnesota Statutes, Section 505.01, Subd. 3, as of the date of this certificate are shown and labeled on this plat; and all public ways are shown and labeled on this plat.

Dated this 7th day of JUNE, 2017.

Kelly L. Jordan
Kelly L. Jordan, Licensed Land Surveyor
Minnesota License No. 42648

STATE OF MINNESOTA
COUNTY OF CHISAGO

This instrument was acknowledged before me this 7th day of June, 2017 by Kelly L. Jordan.

Rachell Jo. Francon

Rachell Jo. Francon
Notary Public, Minnesota
My Commission Expires 1/31/2017

TOWNSHIP OF LINWOOD

We do hereby certify that on the 23rd day of May, 2017, the Board of Supervisors for the Township of Linwood, Anoka County, Minnesota, approved this plat of CATTAIL POND PLAT 2 and said plat is in compliance with the provisions of Minnesota Statutes, Section 505.03, Subd. 2.

Michal Halliday Chairperson Neil Johnson Zoning Administrator

This plat was approved as to form and execution on this 13 day of June, 2017

By Anthony C. Palumbo
Anoka County Attorney

Recommended for approval this 13th day of June, 2017

By Robert J. [Signature]
Anoka County Highway Engineer

Anoka County Board

We do hereby certify that on the 13th day of JUNE, 2017, the Board of Commissioners of Anoka County, Minnesota, approved this plat of CATTAIL POND PLAT 2 and said plat is in compliance with the provisions of Minnesota Statutes, Section 505.03, Subd. 2.

Rhonda Swanson Chairperson [Signature] County Administrator

COUNTY SURVEYOR

I hereby certify that in accordance with Minnesota Statutes, Section 505.021, Subd. 11, this plat has been reviewed and approved this 12th day of JUNE, 2017.

By: Larry D. Holum
Larry D. Holum, Anoka County Surveyor

COUNTY AUDITOR/TREASURER

Pursuant to Minnesota Statutes, Section 505.021, Subd. 9, taxes payable in the year 2017 on the land hereinbefore described have been paid. Also, pursuant to Minnesota Statutes, Section 272.12, there are no delinquent taxes and transfer entered this 14th day of June, 2017.

Jonell M. Sawyer
Property Tax Administrator

By M. Klemm
Deputy

COUNTY RECORDER/REGISTRAR OF TITLES
County of Anoka, State of Minnesota

I hereby certify that this plat of CATTAIL POND PLAT 2 was filed in the office of the County Recorder/Registrar of Titles for public record on this 14th day of June, 2017, at 9:44 o'clock A.M. and was duly recorded in Book NA Page NA, as Document Number 2172953.coi.

Jonell M. Sawyer
County Recorder/Registrar of Titles

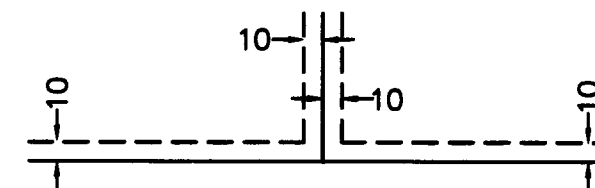
By M. Klemm
Deputy

LEGEND

● DENOTES A FOUND 1/2 INCH IRON PIPE MONUMENT

--- DENOTES EDGE OF WET LANDS

DRAINAGE AND UTILITY EASEMENTS SHOWN THUS:



BEING 10 FEET IN WIDTH AND ADJOINING ALL RIGHT OF WAY LINES AND LOT LINES UNLESS OTHERWISE SHOWN ON THIS PLAT.

NOTE:
The Minnesota Department of Natural Resources, United States Corps of Engineers and other water management agencies have categorized various wetlands, which are not acknowledged by Chapter 505.01, Subdivision 3 of Minnesota Statutes and may not be shown hereon. Development of lands containing said wetlands may be subject to special conditions or limitations.



FOR THE PURPOSES OF THIS PLAT THE SOUTH LINE OF THE OUTLOT A, CATTAIL POND IS ASSUMED TO BEAR NORTH 89°51'50" EAST.



Scale in Feet
1 INCH = 100 FEET



\$56