

# CEDAR CREEK ESTATES

TOWNSHIP OF OAK GROVE

COUNTY OF ANOKA

STATE OF MINNESOTA The foregoing instrument was acknowledged before me this 8<sup>th</sup> day of Sept, 1975  
COUNTY OF ANOKA by Hayes O. Quickstrom and Joan E. Quickstrom, his wife.

Samy Z. Bala  
Notary Public, Anoka County, Minnesota  
My Commission Expires \_\_\_\_\_

STATE OF MINNESOTA The foregoing instrument was acknowledged before me this 8<sup>th</sup> day of Sept, 1975  
COUNTY OF ANOKA by Henry C. Johnson, President and Francis P. Meier, Cashier of the State Bank of Anoka, a Minnesota corporation, on behalf of the corporation.

Samy Z. Bala  
Notary Public, Anoka County, Minnesota  
My Commission Expires \_\_\_\_\_

KNOW ALL MEN BY THESE PRESENTS: That Hayes O. Quickstrom and Joan E. Quickstrom, his wife, owners and proprietors and State Bank of Anoka, a Minnesota corporation, mortgagee of the following described property situated in the County of Anoka, State of Minnesota to wit:

That part of the Northwest Quarter of the Southeast Quarter and the Southwest Quarter of the Southeast Quarter of Section 33, Township 33, Range 24, described as follows: Beginning at the South Quarter corner of said section 33; thence N 1°22'50" W, along the west line of said Southeast Quarter, said bearing is assumed, 2632.59 feet to the center of said section 33; thence S 89°31'44" E, along the north line of said Southeast Quarter, 1311.65 feet to the northeast corner of said Northwest Quarter of Southeast Quarter; thence S 1°17'13" E, along the east line of said Northwest Quarter of Southeast Quarter, 859.17 feet; thence N 25°06'00" W a distance of 291.48 feet; thence on a tangential curve to the left a distance of 344.91 feet, radius of said curve being 236.34 feet; thence S 71°17'00" W, tangent to last described curve, a distance of 120.00 feet; thence on a tangential curve to the left a distance of 303.04 feet, radius of said curve being 238.95 feet; thence S 1°22'50" E, tangent to last described curve, 206.00 feet; thence on a tangential curve to the right a distance of 310.66 feet, radius of said curve being 428.34 feet; thence S 49°49'30" E, not tangent to last described curve, 330.00 feet; thence S 40°10'30" W a distance of 300.00 feet; thence S 34°07'45" W a distance of 512.11 feet; thence S 1°22'50" E a distance of 523.02 feet to the south line of said Southeast Quarter; thence N 89°28'35" W, along said south line, 266.03 feet to the point of beginning;

have caused the same to be surveyed and platted as CEDAR CREEK ESTATES and do hereby donate and dedicate to the public for public use forever the Avenue, Lane, Street and drainage and utility easements as shown on this plat. Also dedicating, to the County of Anoka, the right of access to County Road No. 58 from Lot 4, Block 3, as shown on annexed plat. In witness whereof said Hayes O. Quickstrom and Joan E. Quickstrom, his wife, have set their hands this 8<sup>th</sup> day of Sept, 1975 and in witness whereof said State Bank of Anoka has caused these presents to be signed by its proper officers and its corporate seal to be hereunto affixed this 8<sup>th</sup> day of Sept, 1975.

Signed by:

Hayes O. Quickstrom Joan E. Quickstrom  
Hayes O. Quickstrom Joan E. Quickstrom

STATE BANK OF ANOKA  
Henry C. Johnson Francis P. Meier  
Henry C. Johnson, President Francis P. Meier, Cashier

I hereby certify that I have surveyed and platted the property described on this plat as CEDAR CREEK ESTATES, that this plat is a correct representation of said survey; that all distances are correctly shown on the plat in feet and hundredths of a foot; that all monuments have been correctly placed in the ground as shown on said plat; that the outside boundary lines are correctly designated on said plat, and that there are no wet lands or highways to be designated on said plat, other than shown thereon.

E. A. Rathbun  
E. A. Rathbun, Land Surveyor  
Minnesota Registration No. 3795

STATE OF MINNESOTA The foregoing instrument was acknowledged before me this 29<sup>th</sup> day of August, 1975  
COUNTY OF ANOKA by E. A. Rathbun, Land Surveyor.

Marietta L. Zuehlke  
Notary Public, Anoka County, Minnesota  
My Commission Expires \_\_\_\_\_

We the Chairman and Secretary of the Township Board of the Township of Oak Grove, Anoka County, Minnesota do hereby certify that on this 8<sup>th</sup> day of Sept, 1975 said Township Board duly approved the plat of CEDAR CREEK ESTATES and authorized certification of such action of the Board by its Chairman and Secretary.

TOWN BOARD OF THE TOWNSHIP OF OAK GROVE  
MINNESOTA  
Ernest W. Knutson Chairman  
Walter J. Amyski Secretary

Checked and approved this 9<sup>th</sup> day of Sept, 1975.

Roland W. Anderson  
Anoka County Surveyor

This plat was approved and accepted by the Board of County Commissioners of the County of Anoka, State of Minnesota at a regular meeting thereof held this 9<sup>th</sup> day of Sept, 1975.

By Walter J. Amyski Chairman By Dale J. Winick Executive Secretary

Recommended for approval this 9<sup>th</sup> day of Sept, 1975.

By Rene K. Rind  
County Highway Engineer  
Anoka County, Minnesota

This plat was approved as to form and execution on this 10<sup>th</sup> day of SEPTEMBER, 1975.

Robert W. Nash  
Asst. County Attorney  
Anoka County, Minnesota

432713  
OFFICE OF REGISTER OF DEEDS  
STATE OF MINNESOTA, COUNTY OF ANOKA  
I hereby certify that the within instrument was filed in this office for record on the SEP 10 1975 A.D., 19 11:55 o'clock A.M., and was duly recorded in book 19 of Plats page 1

Ed J. Amnell  
Register of Deeds  
By Virginia L. Holderness  
Deputy

"NO DELINQUENT TAXES AND TRANSFER ENTERED"  
Sept 10 1975  
Charles A. Lefebvre  
Auditor, Anoka County  
By Nancy C. Auspa  
Deputy

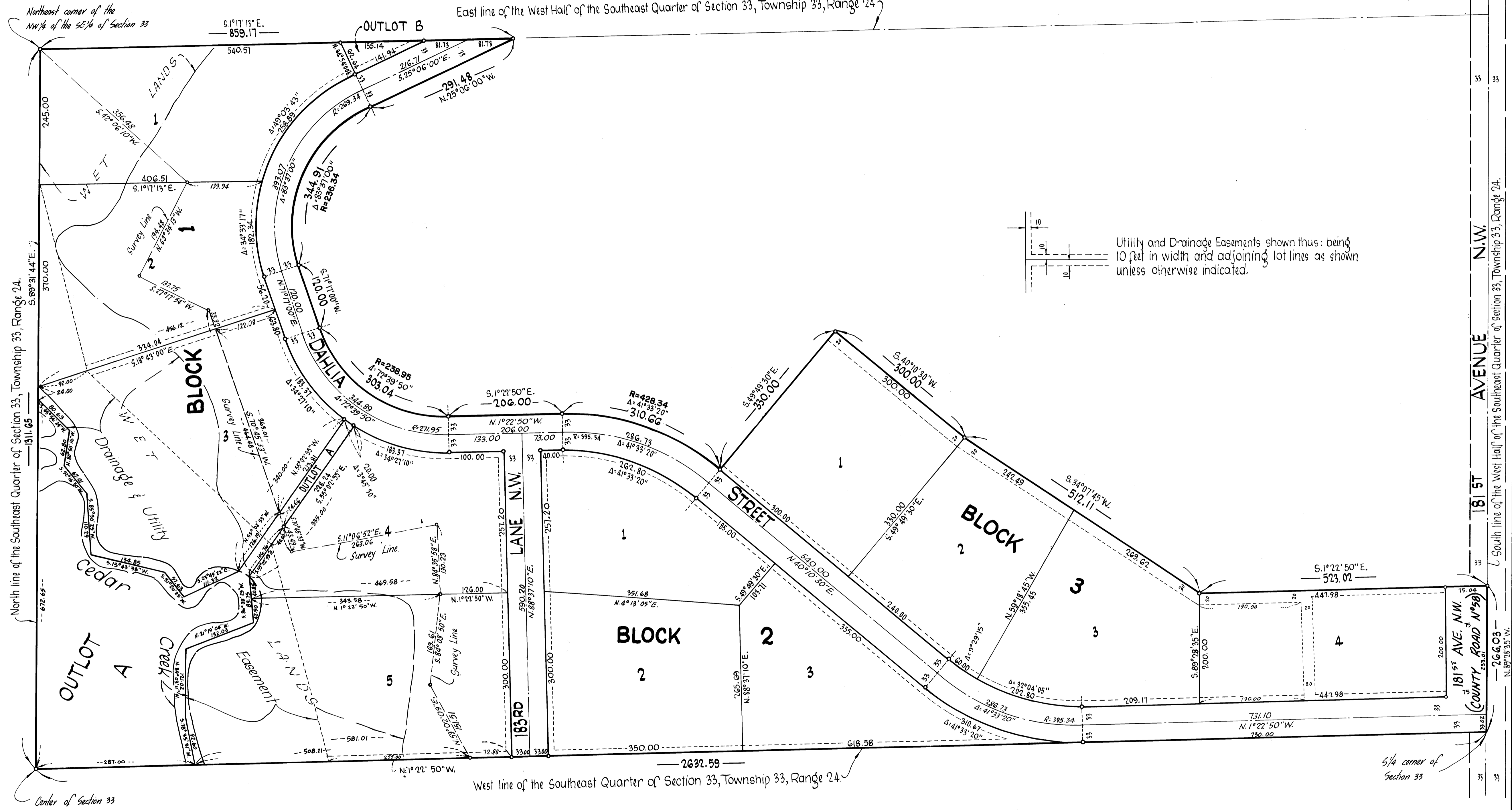
**SUBURBAN**  
ENGINEERING, INC.  
— Engineers —  
— Surveyors —

# CEDAR CREEK ESTATES

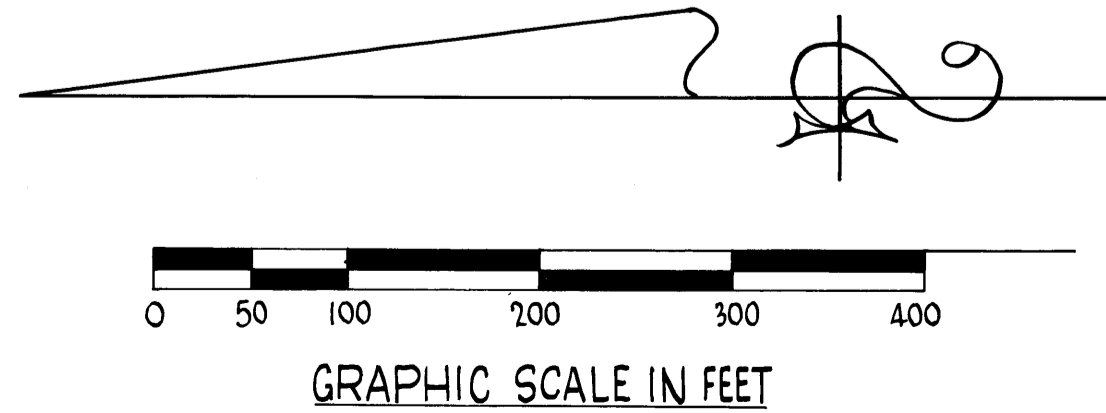
TOWNSHIP OF OAK GROVE

COUNTY OF ANOKA

East line of the West Half of the Southeast Quarter of Section 33, Township 33, Range 24



Utility and Drainage Easements shown thus: being 10 feet in width and adjoining lot lines as shown unless otherwise indicated.



o Denotes iron monument marked by Minnesota Registration No. 3795  
 Bearings shown are assumed

Scale: 1 inch = 100 feet

JULY, 1975

**UBURBAN ENGINEERING, INC.**  
 -Engineers-  
 -Surveyors-