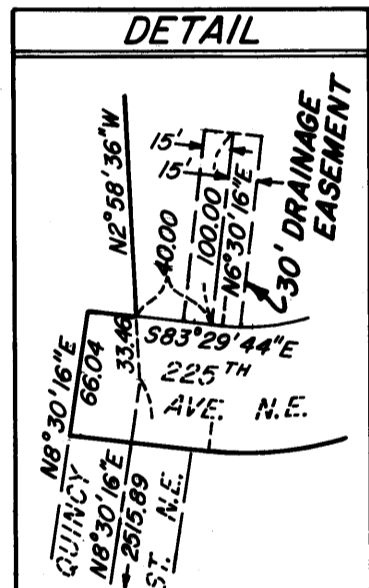
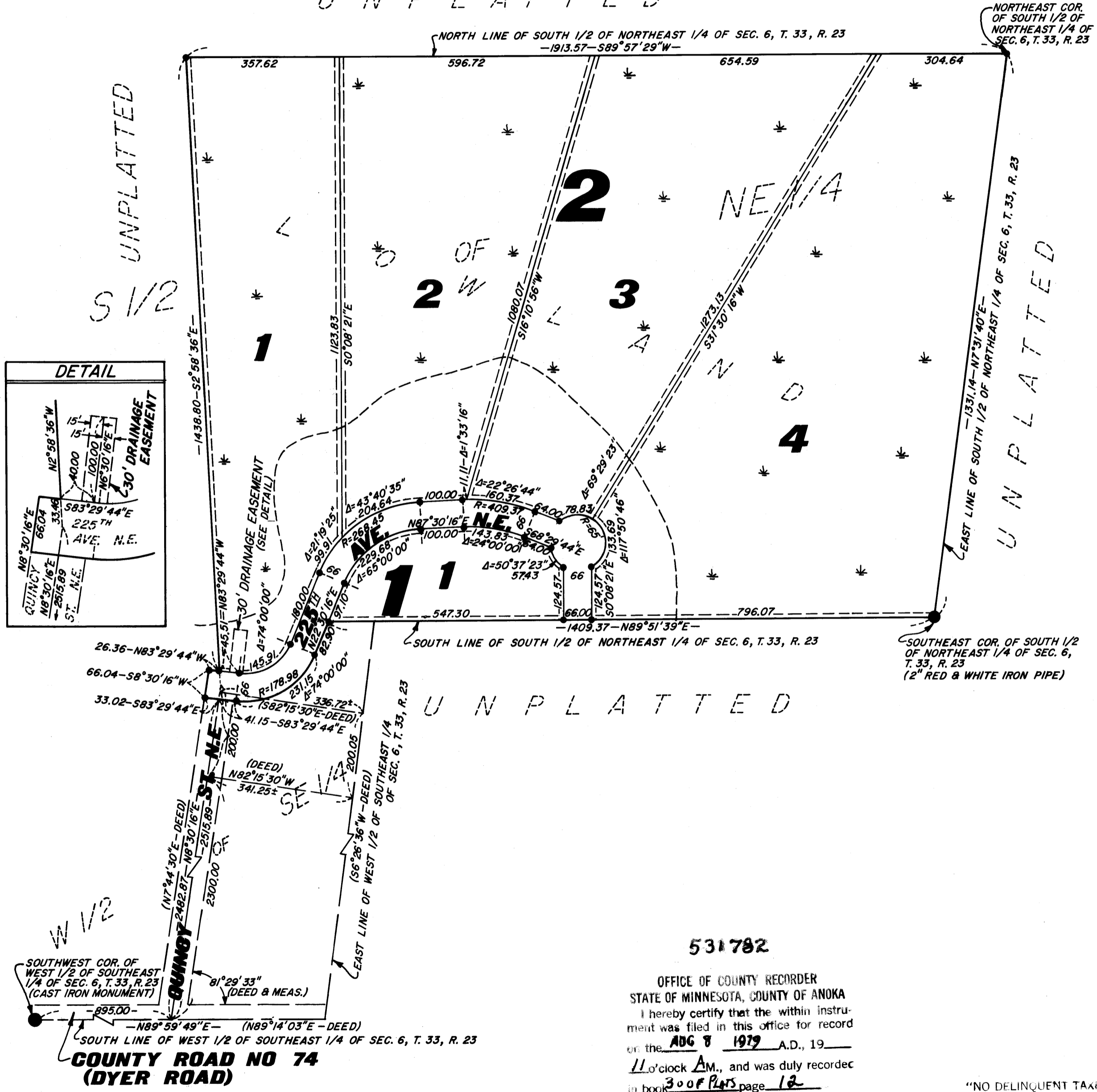
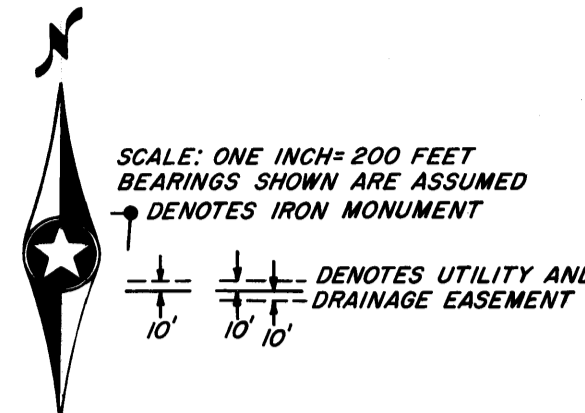


CEDAR CREEK TERRACE

CITY OF EAST BETHEL

ANOKA COUNTY, MINNESOTA

UNPLATTED



531782

OFFICE OF COUNTY RECORDER
STATE OF MINNESOTA, COUNTY OF ANOKA
I hereby certify that the within instrument was filed in this office for record on the ADG 8 A.D., 1979 at 11 o'clock AM., and was duly recorded in book 30 of Plat page 12
By Del J. Oudahl County Recorder
F. E. Hallman Deputy

"NO DELINQUENT TAXES AND TRANSFER ENTERED"
Aug 7th 1979
Charles R. Pollock
Auditor, Anoka County
By F. R. Kamachi Deputy

N. C. HOIUM & ASSOC., INC.
LAND SURVEYORS

ACR 20956 M4 879 15.00

KNOW ALL MEN BY THESE PRESENTS: THAT NAVAJO CORPORATION, A MINNESOTA CORPORATION, OWNER AND PROPRIETOR, AND PEOPLES STATE BANK OF CAMBRIDGE, A MINNESOTA CORPORATION, MORTGAGEE, OF THE FOLLOWING DESCRIBED PROPERTY SITUATED IN THE STATE OF MINNESOTA, COUNTY OF ANOKA, TO-WIT:

THAT PART OF THE WEST 1/2 OF THE SOUTHWEST 1/4 AND THE SOUTH 1/2 OF THE NORTHEAST 1/4 OF SECTION 6, TOWNSHIP 33, RANGE 23, ANOKA COUNTY, MINNESOTA DESCRIBED AS FOLLOWS:
COMMENCING AT THE SOUTHWEST CORNER OF SAID WEST 1/2 OF THE SOUTHWEST 1/4; THENCE EASTERLY ON AN ASSUMED BEARING OF NORTH 89 DEGREES, 59 MINUTES, 49 SECONDS EAST ALONG THE SOUTH LINE OF SAID WEST 1/2 OF THE SOUTHWEST 1/4 A DISTANCE OF 895.00 FEET; THENCE NORTH 08 DEGREES, 30 MINUTES, 16 SECONDS EAST A DISTANCE OF 2482.87 FEET TO THE ACTUAL POINT OF BEGINNING OF THE TRACT TO BE HEREBY DESCRIBED; THENCE SOUTH 83 DEGREES, 29 MINUTES, 44 SECONDS EAST A DISTANCE OF 41.15 FEET; THENCE NORTHEASTERLY ALONG A TANGENTIAL CURVE, CONCAVE TO THE NORTHWEST, HAVING A RADIUS OF 178.98 FEET AND HAVING A DELTA ANGLE OF 74 DEGREES, 00 MINUTES FOR A DISTANCE OF 231.15 FEET; THENCE NORTH 22 DEGREES, 30 MINUTES, 16 SECONDS EAST AND TANGENT TO LAST CURVE A DISTANCE OF 82.90 FEET TO ITS INTERSECTION WITH THE SOUTH LINE OF SAID SOUTH 1/2 OF THE NORTHEAST 1/4; THENCE NORTH 89 DEGREES, 51 MINUTES, 39 SECONDS EAST ALONG SAID SOUTH LINE A DISTANCE OF 1409.37 FEET TO THE SOUTHWEST CORNER OF SAID SOUTH 1/2 OF THE NORTHEAST 1/4; THENCE NORTH 7 DEGREES, 31 MINUTES, 40 SECONDS EAST ALONG THE EAST LINE OF SAID SOUTH 1/2 OF THE NORTHEAST 1/4 A DISTANCE OF 1331.14 FEET TO THE NORTHEAST CORNER OF SAID SOUTH 1/2 OF THE NORTHEAST 1/4; THENCE SOUTH 89 DEGREES, 57 MINUTES, 29 SECONDS WEST ALONG SAID NORTH LINE A DISTANCE OF 1913.57 FEET; THENCE SOUTH 2 DEGREES, 58 MINUTES, 36 SECONDS EAST A DISTANCE OF 1438.80 FEET; THENCE NORTH 83 DEGREES, 29 MINUTES, 44 SECONDS WEST A DISTANCE OF 26.36 FEET; THENCE SOUTH 8 DEGREES, 30 MINUTES, 16 SECONDS WEST A DISTANCE OF 66.04 FEET; THENCE SOUTH 83 DEGREES, 29 MINUTES, 44 SECONDS EAST A DISTANCE OF 33.02 FEET TO THE ACTUAL POINT OF BEGINNING.

EXCEPT ALL THAT PART OF THE ABOVE DESCRIBED TRACT LYING WITHIN THE FOLLOWING DESCRIBED TRACT:
THAT PART OF THE WEST 1/2 OF THE SOUTHWEST 1/4 OF SECTION 6, TOWNSHIP 33, RANGE 23, ANOKA COUNTY, MINNESOTA DESCRIBED AS FOLLOWS:
COMMENCING AT THE SOUTHWEST CORNER OF SAID WEST 1/2 OF THE SOUTHWEST 1/4; THENCE ON AN ASSUMED BEARING OF NORTH 89 DEGREES, 14 MINUTES, 03 SECONDS EAST, ALONG THE SOUTH LINE OF SAID WEST 1/2 OF THE SOUTHWEST 1/4, A DISTANCE OF 895.00 FEET; THENCE NORTH 07 DEGREES, 44 MINUTES, 30 SECONDS EAST, 2300.00 FEET ALONG A LINE DESIGNATED AS "LINE A" TO THE ACTUAL POINT OF BEGINNING OF TRACT TO BE DESCRIBED; THENCE CONTINUING NORTH 07 DEGREES, 44 MINUTES, 30 SECONDS EAST, 200.00 FEET; THENCE SOUTH 82 DEGREES, 15 MINUTES, 30 SECONDS EAST 336.72 FEET, MORE OR LESS, TO THE EAST LINE OF SAID WEST 1/2 OF THE SOUTHWEST 1/4; THENCE SOUTH 06 DEGREES, 26 MINUTES, 36 SECONDS WEST, ALONG SAID EAST LINE 200.05 FEET; THENCE NORTH 82 DEGREES, 15 MINUTES, 30 SECONDS WEST 341.25 FEET, MORE OR LESS, TO THE POINT OF BEGINNING, EXCEPT THE WEST 33 FEET THEREOF.

ALSO BERNARD R. JULKOWSKI AND CATHERINE A. JULKOWSKI, HUSBAND AND WIFE, OWNERS AND PROPRIETORS, OF THE EXCEPTION NOTED ABOVE (ENTIRE PARAGRAPH) HAVE CAUSED THE SAME TO BE SURVEYED AND PLATTED AS CEDAR CREEK TERRACE AND DO HEREBY DONATE AND DEDICATE TO THE PUBLIC FOR PUBLIC USE FOREVER THE AVENUE AND STREET AS SHOWN ON THE PLAT. ALSO DEDICATING THE UTILITY AND DRAINAGE EASEMENTS AS SHOWN ON THE PLAT. IN WITNESS WHEREOF SAID NAVAJO CORPORATION, HAS CAUSED THESE PRESENTS TO BE SIGNED BY ITS PROPER OFFICER AND ITS CORPORATE SEAL TO BE HEREUNTO AFFIXED ON THE 30th DAY OF July, 1979. IN WITNESS WHEREOF SAID PEOPLES STATE BANK OF CAMBRIDGE, HAS CAUSED THESE PRESENTS TO BE SIGNED BY ITS PROPER OFFICERS AND ITS CORPORATE SEAL TO BE HEREUNTO AFFIXED ON THE 30th DAY OF July, 1979. IN WITNESS WHEREOF SAID BERNARD R. JULKOWSKI AND CATHERINE A. JULKOWSKI, HUSBAND AND WIFE, HAVE HEREUNTO SET THEIR HANDS AND SEALS ON THE 30th DAY OF July, 1979.

SIGNED:
Bernard R. Julkowski
BERNARD R. JULKOWSKI
Catherine A. Julkowski
CATHERINE A. JULKOWSKI
NAVAJO CORPORATION
By Bernard R. Julkowski PRESIDENT
BERNARD R. JULKOWSKI
PEOPLES STATE BANK OF CAMBRIDGE
By Robert C. Berklin ITS PRESIDENT
ROBERT C. BERKLIN
BY Robert C. Berklin ITS PRESIDENT

STATE OF MINNESOTA) COUNTY OF ISANTI) ss
THE FOREGOING INSTRUMENT WAS ACKNOWLEDGED BEFORE ME THIS 30th DAY OF July, 1979 BY BERNARD R. JULKOWSKI, PRESIDENT OF NAVAJO CORPORATION, A MINNESOTA CORPORATION, ON BEHALF OF THE CORPORATION.

RAMONA S. CARLSON
NOTARY PUBLIC - MINNESOTA
ISANTI COUNTY
My Commission Expires Feb. 10, 1983

STATE OF MINNESOTA) COUNTY OF ISANTI) ss
THE FOREGOING INSTRUMENT WAS ACKNOWLEDGED BEFORE ME THIS 30th DAY OF July, 1979 BY Robert C. Berklin, PRESIDENT, AND Robert C. Berklin, PRESIDENT, RESPECTIVELY, OF PEOPLES STATE BANK OF CAMBRIDGE, A MINNESOTA CORPORATION, ON BEHALF OF THE CORPORATION.

Ramona S. Carlson
NOTARY PUBLIC, ISANTI COUNTY, MINNESOTA

STATE OF MINNESOTA) COUNTY OF ISANTI) ss
THE FOREGOING INSTRUMENT WAS ACKNOWLEDGED BEFORE ME THIS 30th DAY OF July, 1979 BY BERNARD R. JULKOWSKI AND CATHERINE A. JULKOWSKI, HUSBAND AND WIFE.

Ramona S. Carlson
NOTARY PUBLIC, ISANTI COUNTY, MINNESOTA

I HEREBY CERTIFY THAT I HAVE SURVEYED AND PLATTED THE PROPERTY DESCRIBED IN THIS PLAT AS CEDAR CREEK TERRACE AND THAT THIS PLAT IS A CORRECT REPRESENTATION OF SAID SURVEY; THAT ALL MONUMENTS HAVE BEEN CORRECTLY PLACED IN THE GROUND AS SHOWN ON THE PLAT; THAT ALL DISTANCES ARE CORRECTLY SHOWN IN FEET AND HUNDRETHS OF A FOOT; THAT THE OUTSIDE BOUNDARY LINES ARE CORRECTLY DESIGNATED ON THE PLAT; AND THAT THERE ARE NO WET LANDS OR PUBLIC HIGHWAYS TO BE DESIGNATED ON THE PLAT OTHER THAN AS SHOWN THEREON.

N. C. Hoium
N. C. HOIUM, LAND SURVEYOR, MINNESOTA REG. NO. 4427

STATE OF MINNESOTA) COUNTY OF ANOKA) ss
ABOVE SURVEYOR'S CERTIFICATE SUBSCRIBED AND SWORN TO BEFORE ME THIS 6th DAY OF July, 1979.

LARRY D. HOIUM
NOTARY PUBLIC - MINNESOTA
ANOKA COUNTY
My Commission Expires Sep. 25, 1981

Larry D. Hoium
NOTARY PUBLIC, ANOKA COUNTY, MINNESOTA

WE HEREBY CERTIFY THAT THE CITY COUNCIL OF THE CITY OF EAST BETHEL, ANOKA COUNTY, MINNESOTA, DULY ACCEPTED AND APPROVED THE ANNEXED PLAT OF CEDAR CREEK TERRACE AT A REGULAR MEETING THEREOF HELD THIS 30th DAY OF December, 1978.

CHECKED AND APPROVED THIS 7th DAY OF August, 1979.
BY Wayne S. Anderson MAYOR
BY Sharon J. Schulte CLERK

Robert W. Anderson
COUNTY SURVEYOR, ANOKA COUNTY, MINNESOTA

CITY OF EAST BETHEL
CORPORATE SEAL