

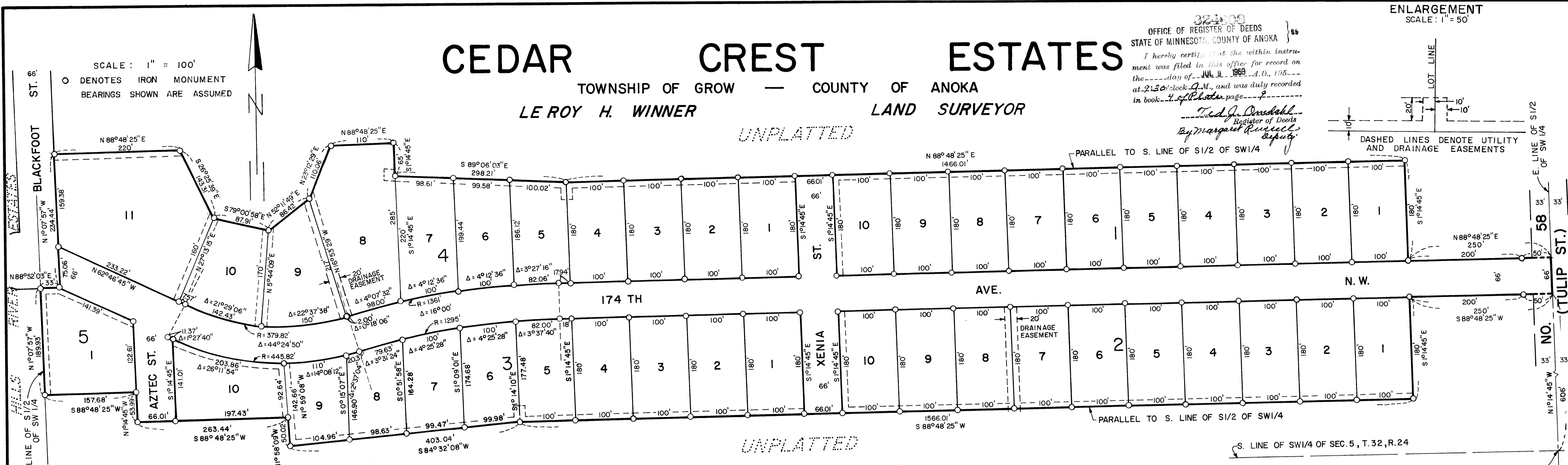
# CEDAR CREST ESTATES

TOWNSHIP OF GROW — COUNTY OF ANOKA

LE ROY H. WINNER LAND SURVEYOR

UNPLATTED

OFFICE OF REGISTER OF DEEDS  
STATE OF MINNESOTA, COUNTY OF ANOKA } 65  
I hereby certify that the within instrument was filed in this office for record on the day of July, 1969 A.D., at 2:30 o'clock P.M., and was duly recorded in book 4 of Plat page 2  
Fred J. Oroski  
Register of Deeds  
By Margaret Russell  
Deputy



KNOW ALL MEN BY THESE PRESENTS THAT HORACE M. MAYO AND CHARLES E. BANKY, SOLE PARTNERS OF A CO-PARTNERSHIP KNOWN AS MAYBAN, OWNERS AND PROPRIETORS OF THE FOLLOWING DESCRIBED PROPERTY SITUATED IN THE COUNTY OF ANOKA, STATE OF MINNESOTA, TO-WIT: THAT PART OF THE SW 1/4 OF SECTION 5, TOWNSHIP 32, RANGE 24 DESCRIBED AS FOLLOWS: BEGINNING AT A POINT ON THE EAST LINE OF SAID SW 1/4, SAID POINT BEING 606 FEET NORTH OF THE SOUTHEAST CORNER THEREOF; THENCE SOUTH 88°48'25" WEST ON A LINE PARALLEL TO THE SOUTH LINE OF SAID SW 1/4 A DISTANCE OF 250 FEET; THENCE SOUTH 10°14'45" EAST ON A LINE PARALLEL TO THE EAST LINE OF SAID SW 1/4 A DISTANCE OF 180 FEET; THENCE WEST AND PARALLEL TO THE SOUTH LINE OF SAID SW 1/4 A DISTANCE OF 1,566.01 FEET; THENCE SOUTH 84°32'08" WEST A DISTANCE OF 403.04 FEET; THENCE NORTH 1°58'09" WEST A DISTANCE OF 50.02 FEET; THENCE WEST AND PARALLEL TO THE SOUTH LINE OF SAID SW 1/4 A DISTANCE OF 263.44 FEET; THENCE NORTH AND PARALLEL TO THE EAST LINE OF SAID SW 1/4 A DISTANCE OF 53.99 FEET; THENCE WEST AND PARALLEL TO THE SOUTH LINE OF SAID SW 1/4 A DISTANCE OF 157.68 FEET TO THE WEST LINE OF SAID SW 1/4; THENCE NORTH ON SAID WEST LINE A DISTANCE OF 189.93 FEET TO THE SOUTH LINE OF BLACKFOOT STREET AS LAID OUT IN THE PLAT OF CEDAR HILLS RIVER ESTATES; THENCE EAST ON THE SOUTH LINE OF SAID BLACKFOOT STREET A DISTANCE OF 33 FEET TO THE SOUTHEAST CORNER THEREOF; THENCE NORTH ON THE EAST LINE OF SAID BLACKFOOT STREET A DISTANCE OF 234.44 FEET; THENCE EAST AND PARALLEL TO THE SOUTH LINE OF SAID SW 1/4 A DISTANCE OF 220 FEET; THENCE SOUTH 26°25'39" EAST A DISTANCE OF 143.31 FEET; THENCE SOUTH 79°00'58" EAST A DISTANCE OF 87.91 FEET; THENCE NORTH 52°11'49" EAST A DISTANCE OF 86.42 FEET; THENCE NORTH 23°12'29" EAST A DISTANCE OF 110.06 FEET; THENCE EAST AND PARALLEL TO THE SOUTH LINE OF SAID SW 1/4 A DISTANCE OF 110 FEET; THENCE SOUTH AND PARALLEL TO THE EAST LINE OF SAID SW 1/4 A DISTANCE OF 65 FEET; THENCE SOUTH 89°06'03" EAST A DISTANCE OF 298.21 FEET; THENCE EAST AND PARALLEL TO THE SOUTH LINE OF SAID SW 1/4 A DISTANCE OF 1,466.01 FEET; THENCE SOUTH AND PARALLEL TO THE EAST LINE OF SAID SW 1/4 A DISTANCE OF 180 FEET; THENCE EAST AND PARALLEL TO THE SOUTH LINE OF SAID SW 1/4 A DISTANCE OF 250 FEET TO THE EAST LINE OF SAID SW 1/4; THENCE SOUTH ON SAID EAST LINE A DISTANCE OF 66 FEET TO THE POINT OF BEGINNING; EXCEPTING THEREFROM THE FOLLOWING DESCRIBED TRACTS: THE NORTH 180 FEET OF THE SOUTH 606 FEET OF THE WEST 200 FEET OF THE EAST 1,716 FEET OF SAID SW 1/4 AND THE NORTH 180 FEET OF THE SOUTH 852 FEET OF THE WEST 200 FEET OF THE EAST 450 FEET OF SAID SW 1/4; AND THAT EV BUILDERS, INCORPORATED, A MINNESOTA CORPORATION, OWNERS AND PROPRIETORS OF THAT PROPERTY DESCRIBED IN THE ABOVE EXCEPTIONS; AND THAT RICHFIELD BANK AND TRUST COMPANY, A MINNESOTA CORPORATION AND MORTGAGEE OF ALL THE ABOVE DESCRIBED PROPERTY INCLUDING THE ABOVE DESCRIBED EXCEPTIONS; HAVE CAUSED THE SAME TO BE SURVEYED AND PLATTED AS CEDAR CREST ESTATES AND DO HEREBY DONATE AND DEDICATE TO THE PUBLIC FOR PUBLIC USE FOREVER THE STREETS AND AVENUE AS SHOWN ON THE ANNEXED PLAT; ALSO SUBJECT TO UTILITY AND DRAINAGE EASEMENTS AS SHOWN ON THE ANNEXED PLAT. IN WITNESS WHEREOF HORACE M. MAYO AND CHARLES E. BANKY HAVE HEREUNTO SET THEIR HANDS AND SEALS THIS 10th DAY OF June, 1969 A.D., AND EV BUILDERS, INCORPORATED HAS CAUSED THESE PRESENTS TO BE SIGNED BY ITS PROPER OFFICERS AND ITS CORPORATE SEAL TO BE HEREUNTO AFFIXED THIS 10th DAY OF June, 1969 A.D., AND RICHFIELD BANK AND TRUST COMPANY HAS CAUSED THESE PRESENTS TO BE SIGNED BY ITS PROPER OFFICERS AND ITS AND ITS CORPORATE SEAL TO BE HEREUNTO AFFIXED THIS 10th DAY OF June, 1969 A.D.

STATE OF MINNESOTA) (SS  
COUNTY OF HENNEPIN)

ON THIS 10th DAY OF June, 1969 A.D. BEFORE ME, A NOTARY PUBLIC, WITHIN AND FOR SAID COUNTY AND STATE, PERSONALLY APPEARED HORACE M. MAYO AND CHARLES E. BANKY TO ME PERSONALLY KNOWN, WHO BEING BY ME, EACH DULY SWORN, DID SAY THAT THEY ARE THE PARTNERS OF MAYBAN, THE CO-PARTNERSHIP NAMED IN THE FOREGOING INSTRUMENT; THAT SAID INSTRUMENT WAS SIGNED IN BEHALF OF SAID CO-PARTNERSHIP AND SAID HORACE M. MAYO AND CHARLES E. BANKY ACKNOWLEDGE SAID INSTRUMENT TO BE THE FREE ACT AND DEED OF SAID CO-PARTNERSHIP.

STATE OF MINNESOTA) (SS  
COUNTY OF ANOKA)

ON THIS 10th DAY OF JUNE, 1969 A.D. BEFORE ME, A NOTARY PUBLIC WITHIN AND FOR SAID COUNTY AND STATE, PERSONALLY APPEARED WILFRID L. BEAUDRY TO ME PERSONALLY KNOWN, WHO BEING BY ME, DULY SWORN, DID SAY THAT HE IS THE PRESIDENT OF EV BUILDERS, INCORPORATED, THE CORPORATION NAMED IN THE FOREGOING INSTRUMENT; THAT THE SEAL AFFIXED TO SAID INSTRUMENT IS THE CORPORATION SEAL OF SAID CORPORATION, AND THAT SAID INSTRUMENT WAS SIGNED AND SEALED IN BEHALF OF SAID CORPORATION BY AUTHORITY OF ITS BOARD OF DIRECTORS AND SAID WILFRID L. BEAUDRY ACKNOWLEDGES SAID INSTRUMENT TO BE THE FREE ACT AND DEED OF SAID CORPORATION.

STATE OF MINNESOTA) (SS  
COUNTY OF HENNEPIN)

ON THIS 10th DAY OF June, 1969 A.D. BEFORE ME, A NOTARY PUBLIC WITHIN AND FOR SAID COUNTY AND STATE, PERSONALLY APPEARED CHESTER N. EGGEN AND H. MICHAEL MULLINIX TO ME PERSONALLY KNOWN, WHO BEING BY ME, EACH DULY SWORN, DID SAY THAT THEY ARE, RESPECTIVELY, THE EXECUTIVE VICE PRESIDENT AND VICE PRESIDENT OF RICHFIELD BANK AND TRUST COMPANY, THE CORPORATION NAMED IN THE FOREGOING INSTRUMENT; THAT THE SEAL AFFIXED TO SAID INSTRUMENT IS THE CORPORATION SEAL OF SAID CORPORATION, AND THAT SAID INSTRUMENT WAS SIGNED AND SEALED IN BEHALF OF SAID CORPORATION BY AUTHORITY OF ITS BOARD OF DIRECTORS AND SAID CHESTER N. EGGEN AND H. MICHAEL MULLINIX ACKNOWLEDGE SAID INSTRUMENT TO BE THE FREE ACT AND DEED OF SAID CORPORATION.

IN THE PRESENCE OF:

SIGNED:

MAYBAN  
A CO-PARTNERSHIP  
BY Horace M. Mayo  
HORACE M. MAYO  
PARTNER  
AND Charles E. Banky  
CHARLES E. BANKY  
PARTNER

EV BUILDERS, INCORPORATED  
A MINNESOTA CORPORATION  
BY Wilfrid L. Beaudry  
WILFRID L. BEAUDRY  
PRESIDENT

RICHFIELD BANK AND TRUST COMPANY  
A MINNESOTA CORPORATION  
BY Chester N. Eggen  
CHESTER N. EGGEN  
EXECUTIVE VICE PRESIDENT  
AND H. Michael Mullinix  
H. MICHAEL MULLINIX  
VICE PRESIDENT

WITNESSES:  
Rosemary Whitten WITNESS  
Wanda L. Mayo WITNESS  
Rosemary Whitten WITNESS  
Janice A. Banky WITNESS  
John A. Ahlstrom WITNESS  
Evelyn Beaudry WITNESS  
Rosemary Whitten WITNESS  
Janice A. Banky WITNESS  
Rosemary Whitten WITNESS  
Janice A. Banky WITNESS

THE ANNEXED PLAT OF CEDAR CREST ESTATES WAS APPROVED BY THE TOWN BOARD OF THE TOWNSHIP OF GROW AT A REGULAR MEETING HELD THIS 10 DAY OF June, 1969 A.D.  
BY Lois Gaylor CHAIRMAN OF TOWN BOARD  
AND John Good CLERK OF TOWN BOARD

THIS PLAT WAS APPROVED AND ACCEPTED BY THE BOARD OF COUNTY COMMISSIONERS OF THE COUNTY OF ANOKA, STATE OF MINNESOTA, AT A REGULAR MEETING HELD THIS 24th DAY OF June, 1969 A.D.

THIS PLAT WAS APPROVED AS TO FORM AND EXECUTION ON THIS 2nd DAY OF July, 1969 A.D.

THIS PLAT WAS CHECKED AND APPROVED ON THIS 24th DAY OF June, 1969 A.D.

RECOMMENDED FOR APPROVAL THIS 24th DAY OF June, 1969 A.D.

I DO HEREBY CERTIFY THAT I HAVE SURVEYED AND PLATTED THE PROPERTY DESCRIBED ON THIS PLAT AS CEDAR CREST ESTATES; THAT THIS IS A CORRECT REPRESENTATION OF SAID SURVEY; THAT ALL DISTANCES ARE CORRECTLY SHOWN ON SAID PLAT IN FEET AND DECIMALS OF A FOOT; THAT ALL MONUMENTS HAVE BEEN CORRECTLY PLACED IN THE GROUND AS SHOWN ON THE PLAT; THAT THE OUTSIDE BOUNDARY LINES ARE CORRECTLY DESIGNATED ON THE PLAT; AND THERE ARE NO WET LANDS OR PUBLIC HIGHWAYS TO BE DESIGNATED ON SAID PLAT OTHER THAN SHOWN THEREON.

STATE OF MINNESOTA) (SS  
COUNTY OF ANOKA)

ABOVE CERTIFICATE SUBSCRIBED AND SWORN TO BEFORE ME, A NOTARY PUBLIC WITHIN AND FOR SAID COUNTY AND STATE ON THIS 10th DAY OF June, 1969 A.D.  
BY Rosemary B. Linger  
ROSEMARY B. LINGER  
NOTARY PUBLIC, ANOKA COUNTY, MINNESOTA  
MY COMMISSION EXPIRES March 10, 1976

TAXES PAID  
This 9th day of July, 1969  
By Kenneth W. Campbell  
Auditor, Anoka County, Minn.  
By Mary Beaudry Deputy

