

CEMSTONE ADDITION

BOOK 76 Page 4
ABST

CITY OF BLAINE
COUNTY OF ANOKA
Sec. 32, Twp. 31, Rge. 23

2025896.001

Office of RECORDER/REGISTRAR

OF TITLES

STATE OF MINNESOTA COUNTY OF ANOKA

I hereby certify that the within instrument was filed in

this office for record on the 2nd day of

December 2011 at 12:51 o'clock AM

and was duly recorded in Book 76 page

4

Larry W. Dalren
Recorder/Registrar of Titles

By MLC
Deputy

I HEREBY CERTIFY THAT THE CURRENT AND DELINQUENT TAXES ON THE LANDS DESCRIBED WITHIN ARE PAID AND THE TRANSFER IS ENTERED <u>December 2, 2011</u>	
<u>Larry W. Dalren</u>	
PROPERTY TAX ADMINISTRATOR	
BY <u>MLC</u>	DEPUTY

KNOW ALL PERSONS BY THESE PRESENTS: That Cemstone Products Company, a Minnesota corporation, owner of the following described property:

Lots 65, 66 and 67, SPRING LAKE PARK SHORES, Anoka County, Minnesota.

AND

That part of Lot 110, SPRING LAKE PARK SHORES, Anoka County, Minnesota, lying Southerly of the following described line: Beginning at the Northeast corner of said Lot 110, for the purpose of this description the East line of said Lot 110 is assumed to bear South 00 degrees 29 minutes 05 seconds West; thence South 88 degrees 14 minutes 56 seconds West a distance of 294.02 feet more or less to the Westerly line of said Lot 110, said line there terminating.

Has caused the same to be surveyed and platted as CEMSTONE ADDITION and does hereby dedicate to the public for public use the public ways and the drainage and utility easements as shown on this plat.

In witness whereof said Cemstone Products Company, a Minnesota corporation, has caused these presents to be signed by its proper officer this 20 day of October, 2011

Signed: Cemstone Products Company

Timothy A. Becken
Timothy A. Becken, as Vice President

STATE OF MINNESOTA
COUNTY OF Dakota

This instrument was acknowledged before me on October 26, 2011 by Timothy A. Becken, Vice President, of Cemstone Products Company, a Minnesota corporation, on behalf of the corporation.

Cheryl M. Froseth
Cheryl M. Froseth
Notary Public, Dakota
My commission expires 1-31-16

I Thomas R. Balluff do hereby certify that this plat was prepared by me or under my direct supervision; that I am a duly Licensed Land Surveyor in the State of Minnesota; that this plat is a correct representation of the boundary survey; that all mathematical data and labels are correctly designated on this plat; that all monuments depicted on this plat have been, or will be correctly set within one year; that all water boundaries and wet lands, as defined in Minnesota Statutes, Section 505.01, Subd. 3, as of the date of this certificate are shown and labeled on this plat; and all public ways are shown and labeled on this plat.

Dated this 25th day of October, 2011

Thomas R. Balluff
Thomas R. Balluff, Licensed Land Surveyor
Minnesota License No. 40361

STATE OF MINNESOTA
COUNTY OF Anoka

This instrument was acknowledged before me on October 25, 2011 by Thomas R. Balluff.

Kelly H. Street
KELLY H. STREET
Notary Public, Anoka County
My commission expires 1-31-2014

CITY COUNCIL, CITY OF BLAINE, MINNESOTA

This plat of CEMSTONE ADDITION was approved and accepted by the City Council of the City of Blaine, Minnesota at a regular meeting thereof held this 20th day of October, 2011, and said plat is in compliance with the provisions of Minnesota Statutes, Section 505.03, Subd. 2.

CITY COUNCIL, CITY OF BLAINE, MINNESOTA

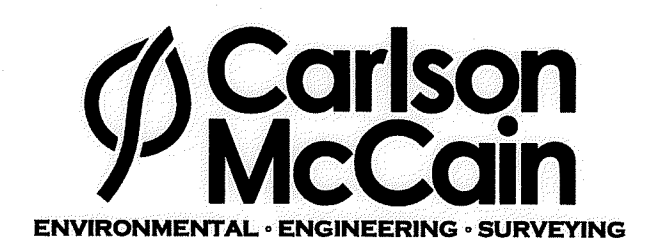
By: Tom Ryan, Mayor
By: Jane McCross, Clerk

COUNTY SURVEYOR

I hereby certify that in accordance with Minnesota Statutes, Section 505.021, Subd. 11, this plat has been reviewed and approved this 2nd day of DECEMBER, 2011.

By: Larry D. Holm
Larry D. Holm
Anoka County Surveyor

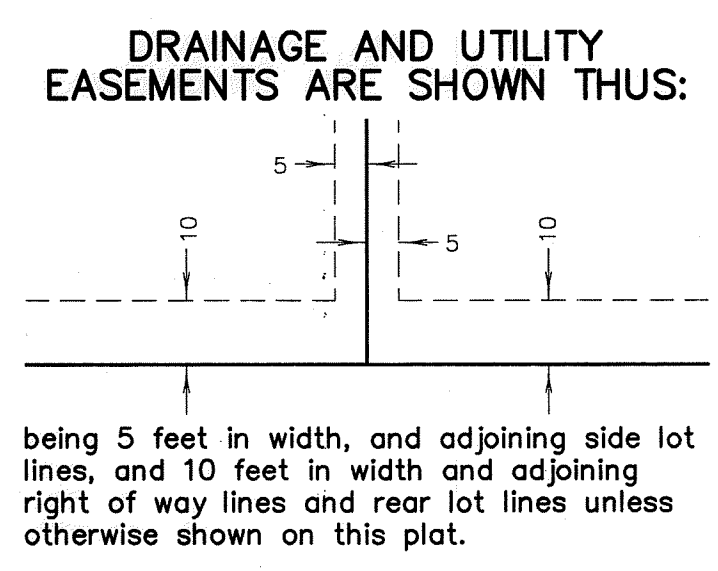
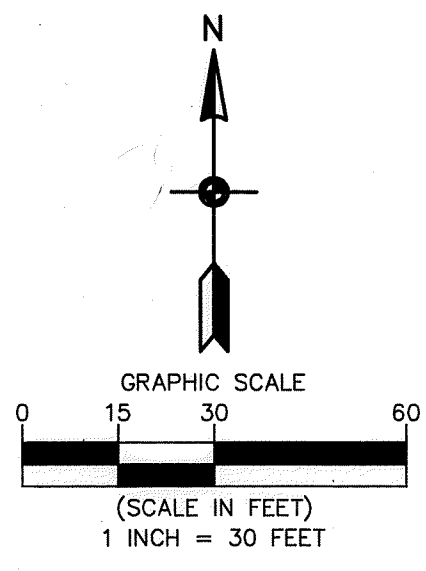
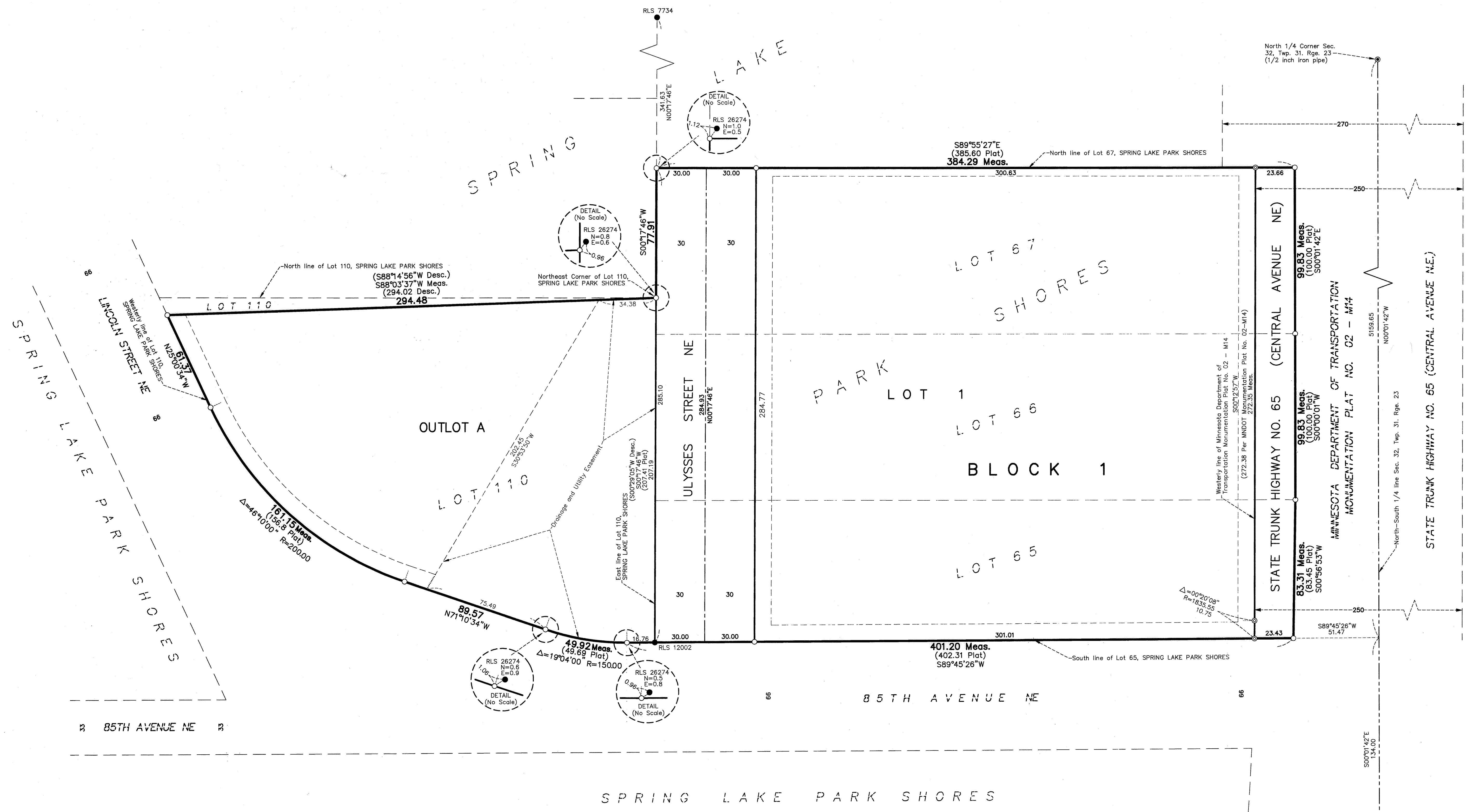
\$56.00



CEMSTONE ADDITION

Book 76 Page 4
ABST

CITY OF BLAINE
COUNTY OF ANOKA
Sec. 32, Twp. 31, Rge. 23



- Denotes 1/2 inch by 14 inch iron monument set or to be set within one year of recording of this plat and marked with license number 40361
- Denotes Found Iron Monument, as noted
- ⊙ Denotes Anoka County Section Corner
- ⊗ Denotes Found PK Nail

For the purposes of this plat, the north line of Lot 67, SPRING LAKE PARK SHORES, is assumed to have a bearing of South 89°55'27" East.

Plat - Denotes distance shown on the final plat of SPRING LAKE PARK SHORES

Desc.- Denotes distance per the legal description

Meas.- Denotes measured distance

