

CENTER HILLS FIRST ADDITION

City of Centerville
County of Anoka

KNOWN ALL MEN BY THESE PRESENTS: That R & R Leasing, Inc., a Minnesota Corporation, fee owner of the following described property situated in the State of Minnesota, County of Anoka, to-wit:

That part of the Southeast Quarter of the Southeast Quarter of Section 14, Township 31, Range 22, Anoka County, Minnesota described as follows: Beginning at the Southeast corner of said Southeast Quarter of the Southeast Quarter; thence on an assumed bearing of North 89 degrees 13 minutes 26 seconds West, along the South line of said Southeast Quarter of the Southeast Quarter, 1320.69 feet to the Southwest corner of said Southeast Quarter of the Southeast Quarter; thence North 0 degrees 12 minutes 29 seconds East, along the West line of said Southeast Quarter of the Southeast Quarter, 383.27 feet; thence South 89 degrees 47 minutes 31 seconds East 348.79 feet; thence North 81 degrees 45 minutes 56 seconds East 68.13 feet; thence South 79 degrees 26 minutes 29 seconds East 284.68 feet; thence North 83 degrees 34 minutes 53 seconds East 87.69 feet; thence South 89 degrees 13 minutes 26 seconds East 266.89 feet; thence North 73 degrees 44 minutes 37 seconds East 62.54 feet; thence South 89 degrees 51 minutes 29 seconds East 210.00 feet to the East line of said Southeast Quarter of the Southeast Quarter; thence South 0 degrees 08 minutes 31 seconds West, along the East line of said Southeast Quarter of the Southeast Quarter 380.66 feet to the point of beginning.

Have caused the same to be surveyed and platted as CENTER HILLS FIRST ADDITION and do hereby donate and dedicate to the public for the public use forever the Drive, Run, Avenues and Street as shown on this plat. Also dedicating to the County of Anoka the right of access from Lots 12, 13, 14, and 15, Block 3 to County State Aid Highway No. 21. Also dedicating to the public, the easements as shown on this plat for drainage and utility purposes only. In witness whereof said R & R Leasing, Inc., a Minnesota Corporation has caused these presents to be signed by its proper officer this 2 day of July, 1990.

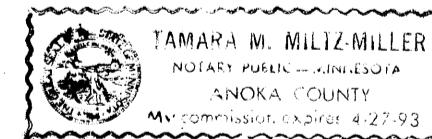
R & R LEASING, INC.

By Gordon Rabbin, its Pres.

STATE OF MINNESOTA
COUNTY OF Anoka

The foregoing instrument was acknowledged before me this 2nd day of July, 1990, by Gordon Rabbin, President of R & R Leasing, Inc., a Minnesota Corporation, on behalf of the corporation.

Tamara M. Millz-Miller
Notary Public, Anoka County, Minnesota
My Commission Expires 4-27-93



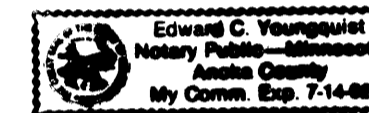
I hereby certify that I have surveyed and platted the property described on this plat as CENTER HILLS FIRST ADDITION that this plat is a correct representation of said survey; that all distances are correctly shown on the plat in feet and hundredths of a foot; that all monuments have been correctly placed in the ground as shown; that the outside boundary lines are correctly designated on said plat and that there are no wet lands or public highways to be designated other than as shown on said plat.

Ronald P. Alwin
Ronald P. Alwin, Land Surveyor
Minnesota Registration No. 17765

STATE OF MINNESOTA
COUNTY OF ANOKA

The foregoing Surveyor's Certificate was acknowledged before me this 27th day of JUNE, 1990, by Ronald P. Alwin, Minnesota Registration No. 17765.

Edward C. Janssen
Notary Public, Anoka County, Minnesota
My Commission Expires 7-14-92



This plat of CENTER HILLS FIRST ADDITION was approved by the City Council of Centerville, Minnesota at a regular meeting thereof held this 13th day of June, 1990 and if applicable, the written comments and recommendations of the Commissioner of Transportation and the County Highway Engineer have been received by the city or the prescribed 30 day period has elapsed without receipt of such comments and recommendations, as provided by Minnesota Statutes, Section 505.03, Subd. 2.

By George Haberwar Mayor

By Tamara M. Millz-Miller Clerk

This plat has been checked and approved this 5th day of July, 1990.

Marjorie D. Anderson
Anoka County Surveyor

"NO DELINQUENT TAXES AND TRANSFER ENTLED"

July 5 1990
Charles R. Pfeiffer
Auditor, Anoka County
Ronald P. Alwin
Deputy

I HEREBY CERTIFY THAT THE TAXES PAYABLE IN THE YEAR 1990 ON THE LANDS DESCRIBED WITHIN ARE PAID
Richard D. Deputy
Anoka County Treasurer

899034

OFFICE OF COUNTY RECORDER
STATE OF MINNESOTA, COUNTY OF ANOKA
I hereby certify that the within instrument was filed in this office for record on the JUL 5 A.D., 1990 3:30 o'clock P.M., and was duly recorded in book 12 of 125 page 21

Ted J. Randall
County Recorder
By Jack Kaye
Deputy

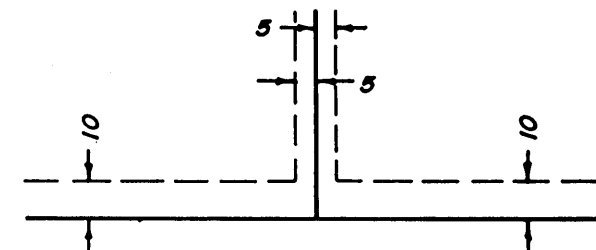


CENTER HILLS FIRST ADDITION

City of Centerville
County of Anoka

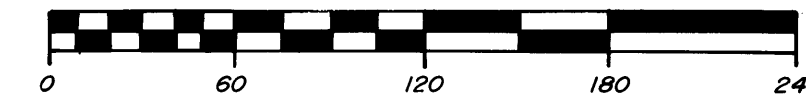
o Denotes Set 1/2" x 14" Iron
Monument Marked R.L.S. 17765,
unless otherwise shown on plat.

Drainage and Utility Easements shown thus:



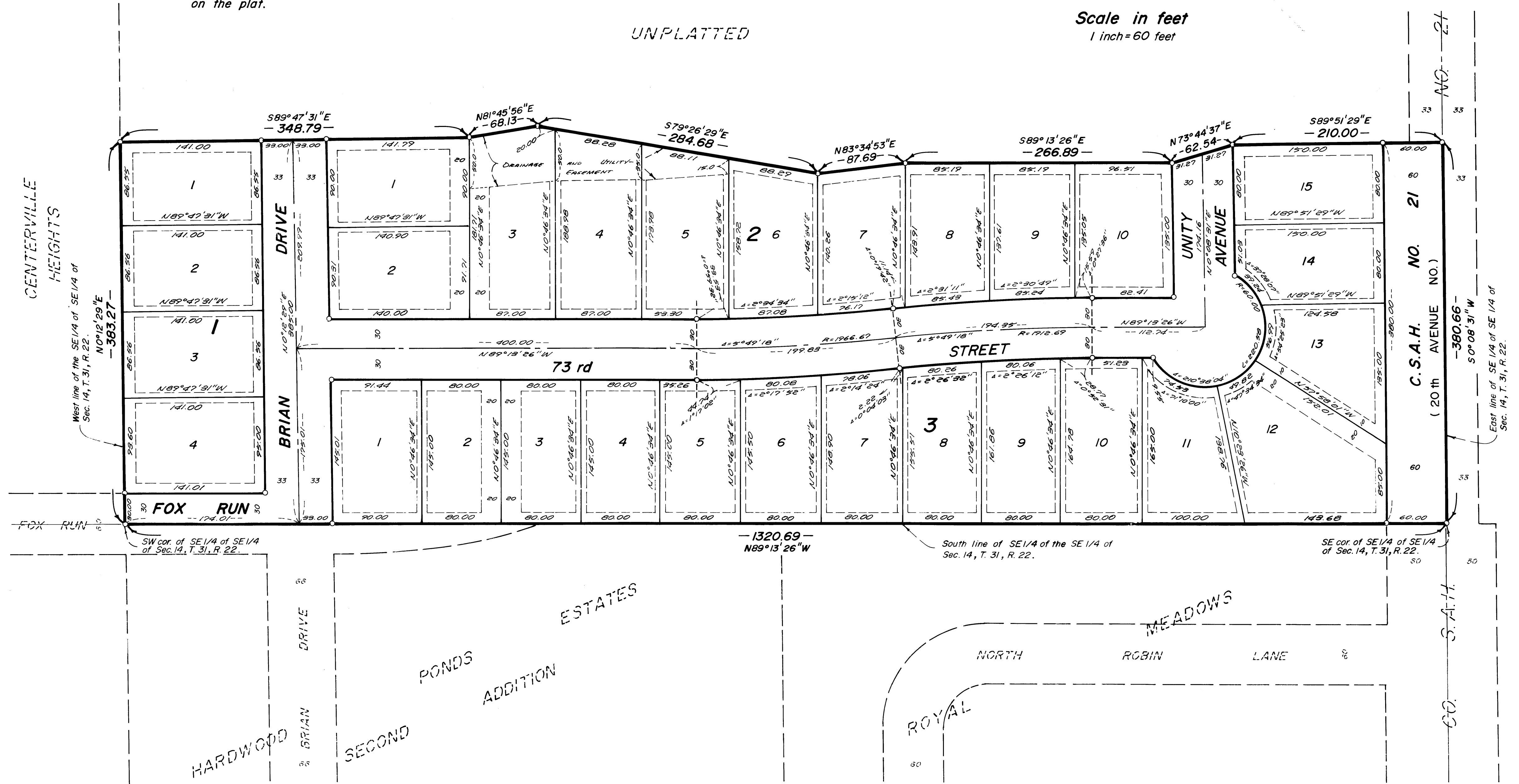
Being 5 feet in width and adjoining side lot
lines, and 10 feet in width and adjoining street
lines and rear lot lines, unless otherwise shown
on the plat.

For the purposes of this plat, the
South line of the SE 1/4 of the
SE 1/4 of Sec. 14, T. 31, R. 22
has an assumed bearing of N89°
13'26" W.



Scale in feet
1 inch = 60 feet

UNPLATTED



UNPLATTED