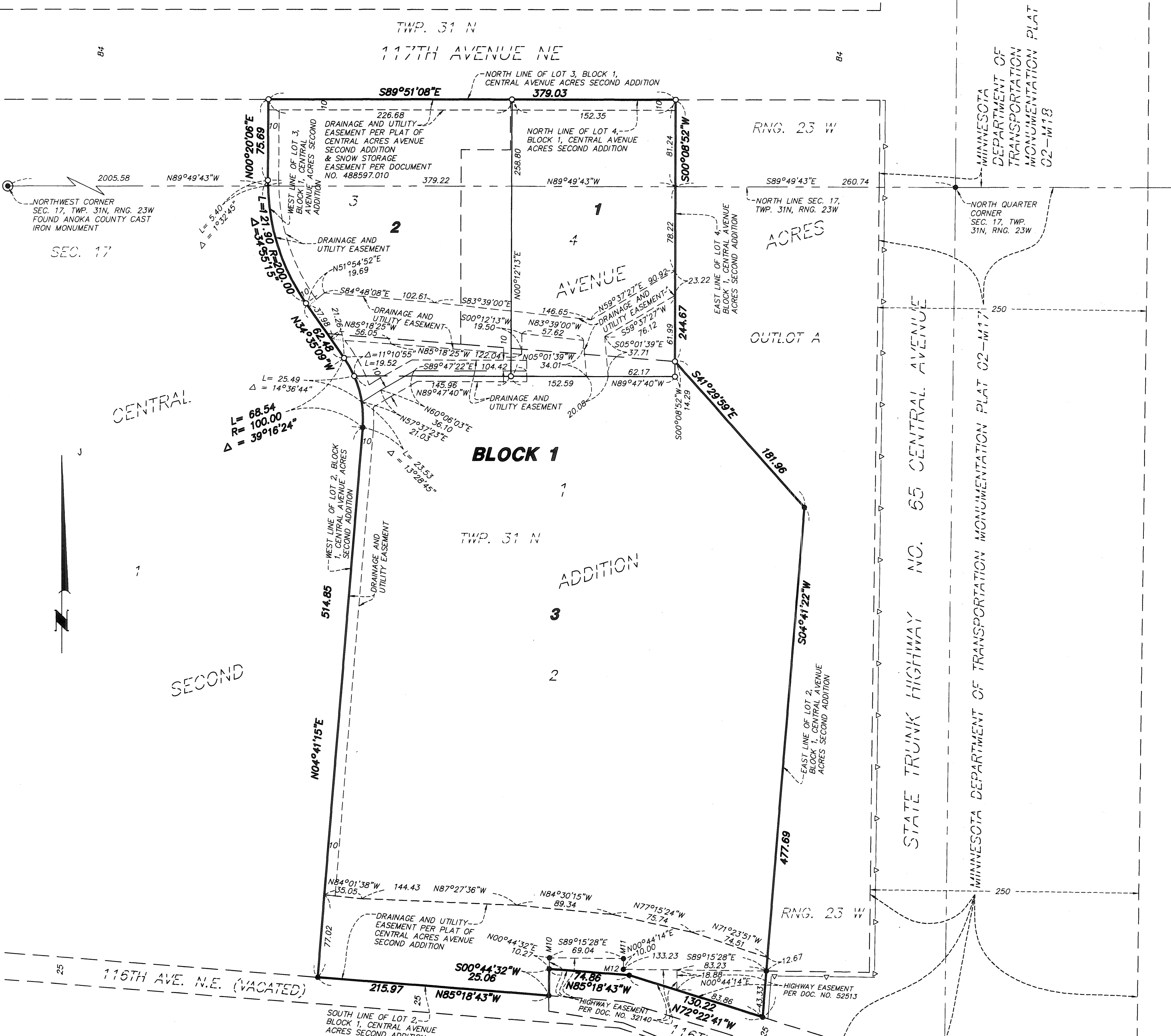


# CENTRAL AVENUE ACRES THIRD ADDITION

SEC. 8

NORTH CENTRAL COMMONS



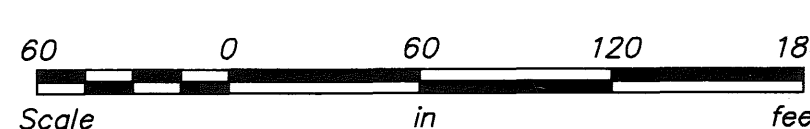
CENTRAL  
SECOND

BLOCK 1  
ADDITION

STATE TRUNK HIGHWAY NO. 65 CENTRAL AVENUE

MINNESOTA  
DEPARTMENT OF  
TRANSPORTATION  
MONUMENTATION PLAT  
02-M113

For the purposes of this plat, the north line of Lot 3, Block 1, CENTRAL AVENUE ACRES SECOND ADDITION, is assumed to bear S89°51'08"E.



- Denotes 1/2 inch by 14 inch iron monument set and marked by License No. 45873
- Denotes found Anoka County cast iron monument
- Denotes found iron monument
- M10 Denotes monument No. per MNDOT MONUMENTATION PLAT 02-M17
- △ Denotes restricted access dedicated to the state of Minnesota per MNDOT MONUMENTATION PLAT 02-M17

499753.001  
Office of REGISTER OF TITLES  
STATE OF MINNESOTA  
COUNTY OF ANOKA  
I hereby certify that the within instrument was filed in this office on Oct. 23, 2009 at 2:55 PM.  
Maureen J. Beron, Register of Titles  
Deputy Register of Titles

I HEREBY CERTIFY THAT THE CURRENT AND DELINQUENT TAXES ON THE LANDS DESCRIBED WITHIN ABE PAID AND THE TRANSFER IS ENTERED 10/23/09  
MAUREEN J. BERON  
PROPERTY TAX ADMINISTRATOR  
COUNTY OF ANOKA  
DEPUTY PROPERTY TAX ADMINISTRATOR

KNOW ALL MEN BY THESE PRESENTS: That Ryan Companies US, Inc., a Minnesota corporation, fee owner and U.S. Bank National Association, a national banking association, mortgagee of the following described property situated in the County of Anoka, State of Minnesota, to wit:

Lots 2, 3 and 4, Block 1, CENTRAL AVENUE ACRES SECOND ADDITION, according to the recorded plat thereof, Anoka County, Minnesota.

Have caused the same to be surveyed and platted as CENTRAL AVENUE ACRES THIRD ADDITION and do hereby donate and dedicate to the public for public use forever the easements shown on this plat for drainage and utility purposes only.

In witness whereof said Ryan Companies US, Inc., a Minnesota corporation, has caused these presents to be signed by its proper officer this 23 day of October, 2009.

SIGNED: RYAN COMPANIES US, INC.

By Molly R Carson as VP and

STATE OF MINNESOTA  
COUNTY OF Hennepin

The foregoing instrument was acknowledged before me this 23 day of October, 2009, by Molly R Carson as VP of Ryan Companies US, Inc., a Minnesota corporation, on behalf of the corporation.

Julie A. Henneman  
Notary Public, Hennepin County, Minnesota  
My Commission Expires 11/3/2010

In witness whereof said U.S. Bank National Association, a national banking association, has caused these presents to be signed by its proper officer this 23 day of October, 2009.

SIGNED: U.S. BANK NATIONAL ASSOCIATION

By Paul F Berg as Vice President

STATE OF MINNESOTA  
COUNTY OF Hennepin

The foregoing instrument was acknowledged before me this 23 day of October, 2009, by Paul F Berg as Vice President of U.S. Bank National Association, a national banking association, on behalf of the association.

Julie A. Henneman  
Notary Public, Hennepin County, Minnesota  
My Commission Expires 11/3/2010

I, Nathan H. Carlson, a duly Licensed Land Surveyor under the laws of the State of Minnesota, do hereby certify that I have surveyed or directly supervised the survey of the property described on this plat; prepared this plat or directly supervised the preparation of this plat of CENTRAL AVENUE ACRES THIRD ADDITION; that this plat is a correct representation of the boundary survey; that all mathematical data and labels are correctly designated on this plat; that all monuments depicted on the plat have been, or will be correctly set within one year as indicated on this plat; that all water boundaries and wet lands, as defined in Minnesota Statutes, Section 505.01, Subd. 3, as of the date of this certificate are shown and labeled on this plat; and all public ways are shown and labeled on this plat.

Dated this 21<sup>st</sup> day of OCTOBER, 2009.

Nathan H. Carlson  
Nathan H. Carlson, Professional Land Surveyor  
Minnesota License No. 45873

STATE OF MINNESOTA  
COUNTY OF Stearns

The foregoing surveyor's certificate was acknowledged before me this 21<sup>st</sup> day of October, 2009, by Nathan H. Carlson, Professional Land Surveyor, Minnesota License No. 45873.

Betty McGeary  
Notary Public, Stearns County, Minnesota  
My Commission Expires 11/3/2010

CITY COUNCIL  
CITY OF BLAINE, MINNESOTA

This plat of CENTRAL AVENUE ACRES THIRD ADDITION was approved and accepted by the City Council of the City of Blaine, Minnesota at a regular meeting thereof held this 20<sup>th</sup> day of August, 2009, and said plat is in compliance with the provisions of Minnesota Statutes, Section 505.03, Subdivision 2.

By Conor Ryan Mayor By Catherine Ekstrand Deputy Clerk

ANOKA COUNTY SURVEYOR

This plat has been checked and approved this 28<sup>th</sup> day of OCTOBER, 2009.

By Larry D. Holm  
Larry D. Holm, Anoka County Surveyor

Westwood  
Professional Services, Inc.

\$56.00