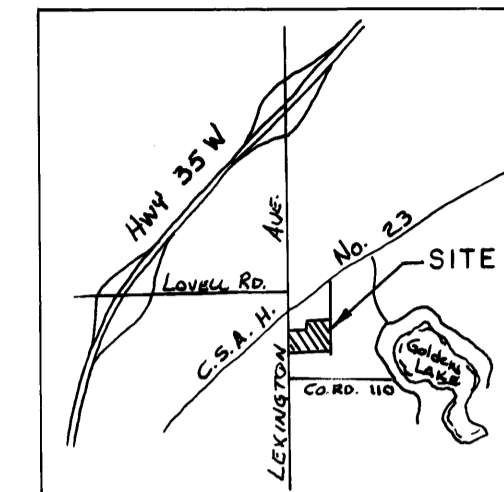


# CENTRAL BUSINESS DISTRICT

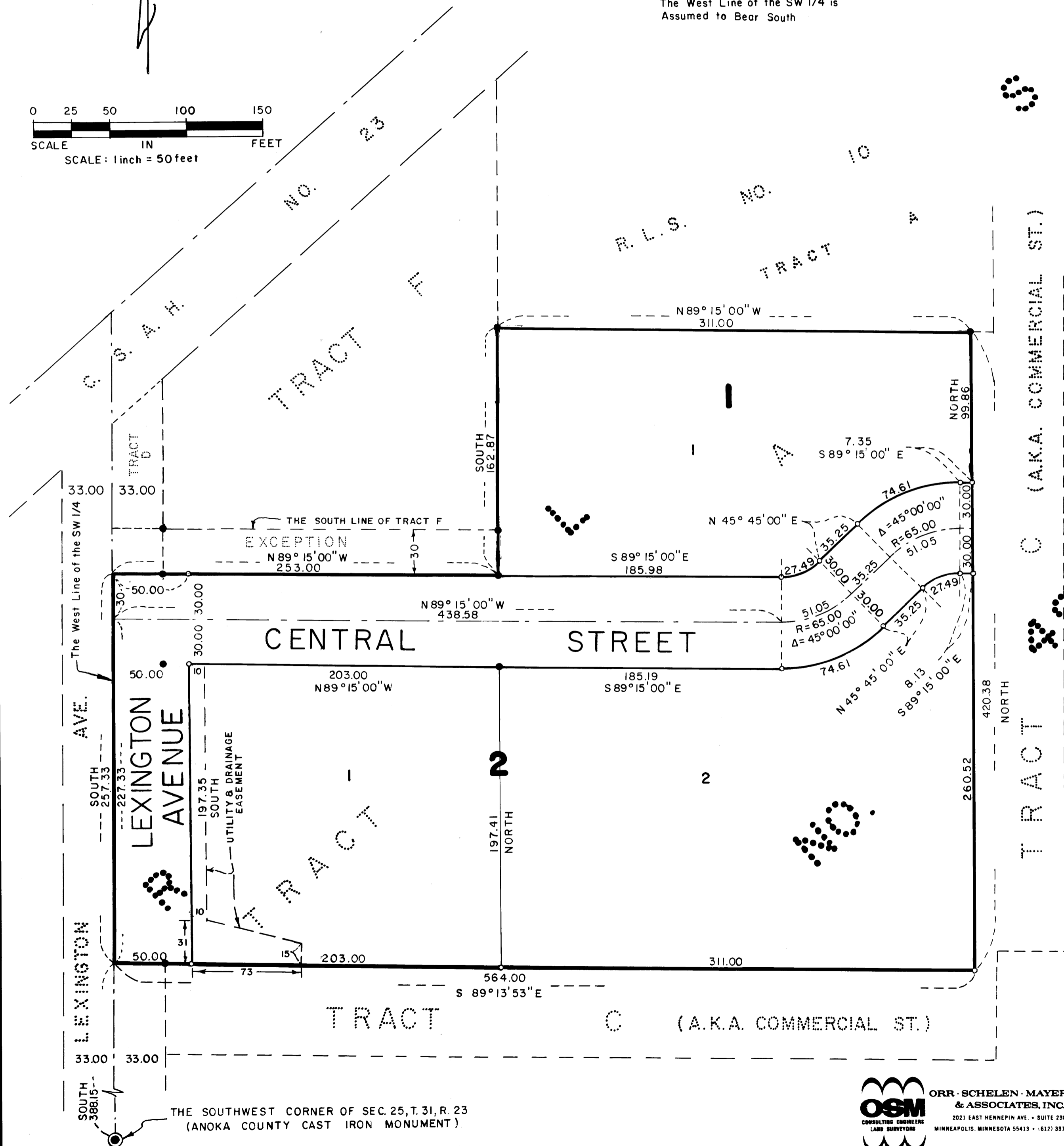
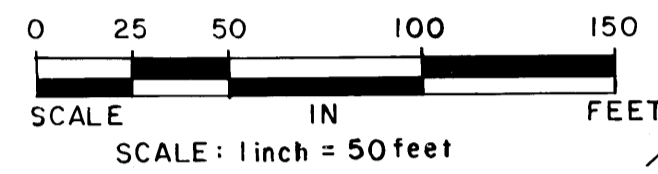
125596

Official Record of Plat  
 MAR 28 1983  
 Notary Public  
 Anoka County, Minnesota  
 My Commission Expires: FEB 27 1985

○: Denotes 1/2" Iron Pipe Set,  
Copped R.L.S. No. 11394  
 ●: Denotes Monument Found  
 The West Line of the SW 1/4 is  
Assumed to Bear South



LOCATION MAP  
(NO SCALE)



Know All Persons By These Presents: that the City of Circle Pines, a Minnesota Municipal Corporation, fee owners of the following described property situated in the County of Anoka, and State of Minnesota to wit:

Tract A, Registered Land Survey No. 49, files of the Registrar of Titles, Anoka County, Minnesota:

Except that part of said Tract A which lies westerly of the southerly extension of the east line of Tract F, Registered Land Survey No. 49, and northerly of a line 30 feet southerly of, measured at a right angle to and parallel with, the southerly line of said Tract F, Registered Land Survey No. 49.

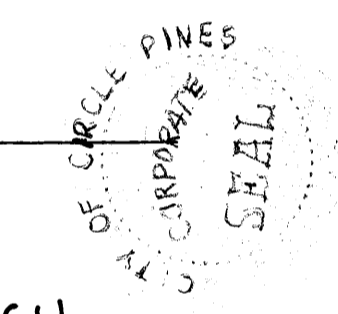
Have caused the same to be surveyed and platted as CENTRAL BUSINESS DISTRICT and do hereby dedicate to the public for public use forever the street, avenue, utility and drainage easements as shown on this plat.

In witness whereof said City of Circle Pines, a Minnesota Municipal Corporation, has caused these presents to be signed by its proper officers and its corporate seal to be hereunto affixed this 8<sup>th</sup> day of MARCH, 1983.

CITY OF CIRCLE PINES

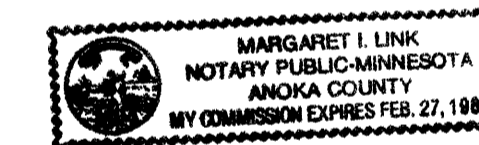
Marshall Dahl  
 Marshall Dahl, Mayor

Craig R. Rapp  
 Craig Rapp, City Clerk



STATE OF MINNESOTA )  
 COUNTY OF ANOKA )

The foregoing instrument, A.K.A. Marshall N. Dahl, A.K.A. Craig R. Rapp, was acknowledged before me this 24<sup>th</sup> day of MARCH, 1983, by Marshall Dahl, Mayor, and Craig Rapp, City Clerk, of the City of Circle Pines, a Minnesota Municipal Corporation, on behalf of the corporation.



Margaret I. Link  
 Notary Public, Anoka County, Minnesota  
 My Commission Expires: FEB 27 1985

I, D. Edward Ames, hereby certify that I have surveyed and platted the property described in the dedication of this plat as CENTRAL BUSINESS DISTRICT, that this plat is a correct representation of said survey, that all distances are correctly shown on the plat in feet and hundredths of a foot, that all monuments have been correctly placed in the ground as shown; and that the outside boundary lines are correctly designated on the plat, and that there are no wetlands to be designated on the plat.

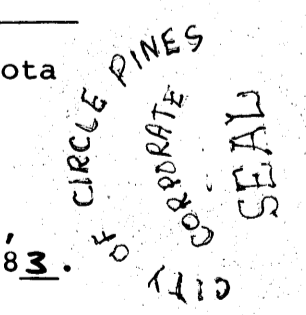
D. Edward Ames  
 D. Edward Ames, Land Surveyor  
 Minnesota Registration No. 11394

STATE OF MINNESOTA )  
 COUNTY OF HENNEPIN )

The foregoing instrument was acknowledged before me this 21<sup>st</sup> day of February, 1983, by D. Edward Ames, Land Surveyor.



David P. Asplund  
 David P. Asplund  
 Notary Public, Hennepin County, Minnesota  
 My Commission Expires: April 4, 1983



CIRCLE PINES, MINNESOTA

This plat was approved and accepted by the City Council of the City of Circle Pines, Minnesota at a regular meeting thereof held this 25<sup>th</sup> day of January, 1983.

CITY COUNCIL OF THE CITY OF CIRCLE PINES, MINNESOTA

Marshall Dahl, Mayor      Craig R. Rapp, Clerk  
 ANOKA COUNTY SURVEYOR

This plat was checked and approved on the 24<sup>th</sup> day of March, 1983.

Robert W. Anderson  
 County Surveyor, Anoka County, Minnesota

"NO DELINQUENT TAXES  
 AND TRANSFER ENTERED"

March 28 1983

Charles R. Lyfelson  
 Auditor, Anoka County

By Larry W. Dalen  
 Deputy

