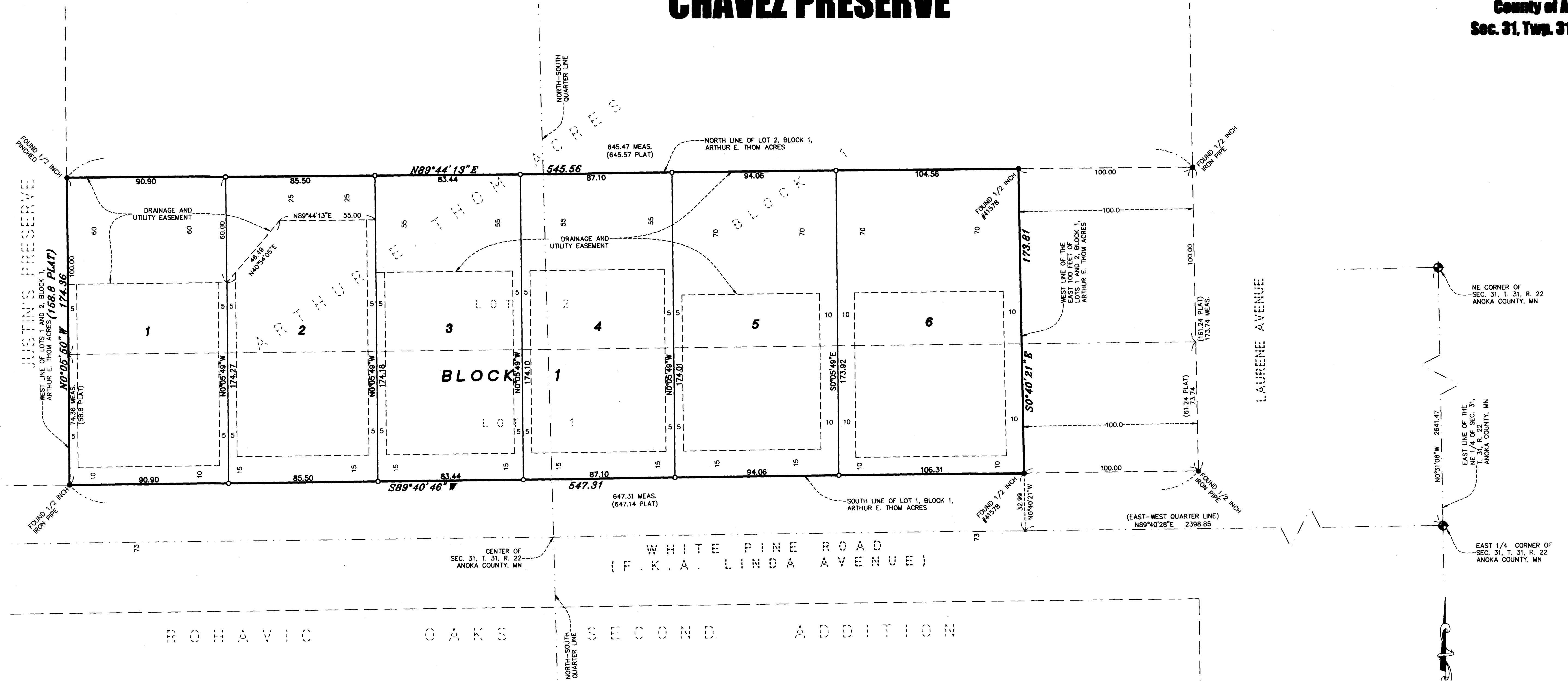


# CHAVEZ PRESERVE

City of Lino Lakes  
County of Anoka  
Sec. 31, Twp. 31, Rge. 22



KNOW ALL PERSONS BY THESE PRESENTS: That Royal Oaks Realty, Inc., a Minnesota corporation, owner of the following described property:

That part of Lots 1 and 2, Block 1, ARTHUR E. THOM ACRES, Anoka County, Minnesota, lying westerly of the East 100 feet thereof.

Has caused the same to be surveyed and platted as CHAVEZ PRESERVE and does hereby dedicate to the public for public use the drainage and utility easements as shown on this plat.

In witness whereof said Royal Oaks Realty, Inc., a Minnesota corporation, has caused these presents to be signed by its proper officer this 2nd day of August, 2017.

Royal Oaks Realty, Inc.

Marcel Eibensteiner  
Marcel Eibensteiner, President

STATE OF Minnesota  
COUNTY OF Ramsey

This instrument was acknowledged before me this 2nd day of August, 2017, by Marcel Eibensteiner, President of Royal Oaks Realty, Inc., a Minnesota corporation, on behalf of the corporation.

Caylani E. Galvin  
Caylani E. Galvin  
Notary Public, Anoka County, Minnesota  
My Commission Expires January 31, 2021

I Daniel W. Obermiller do hereby certify that this plat was prepared by me or under my direct supervision; that I am a duly Licensed Land Surveyor in the State of Minnesota; that this plat is a correct representation of the boundary survey; that all mathematical data and labels are correctly designated on this plat; that all monuments depicted on this plat have been, or will be correctly set within one year; that all water boundaries and wet lands, as defined in Minnesota Statutes, Section 505.01, Subd. 3, as of the date of this certificate are shown and labeled on this plat; and all public ways are shown and labeled on this plat.

Dated this 2nd day of August, 2017.

Daniel W. Obermiller  
Daniel W. Obermiller, Licensed Land Surveyor  
Minnesota License No. 25341

STATE OF MINNESOTA  
COUNTY OF Anoka

This instrument was acknowledged before me this 2nd day of August, 2017, by Daniel W. Obermiller.

Nicole A. Johnson  
Nicole A. Johnson  
Notary Public, Anoka County, Minnesota  
My Commission Expires January 31, 2020

CITY COUNCIL, CITY OF LINO LAKES, MINNESOTA

This plat of CHAVEZ PRESERVE was approved and accepted by the City Council of the City of Lino Lakes, Minnesota at a regular meeting thereof held this 10th day of July, 2017 and said plat is in compliance with the provisions of Minnesota Statutes, Section 505.03, Subd. 2.

CITY COUNCIL, CITY OF LINO LAKES, MINNESOTA

By [Signature] Mayor  
By [Signature] Clerk

COUNTY SURVEYOR

I hereby certify that in accordance with Minnesota Statutes, Section 505.021, Subd. 11, this plat has been reviewed and approved this 10th day of August, 2017.

Larry D. Hoium by Charles F. Gutzen, Deputy  
Larry D. Hoium  
Anoka County Surveyor

COUNTY AUDITOR/TREASURER

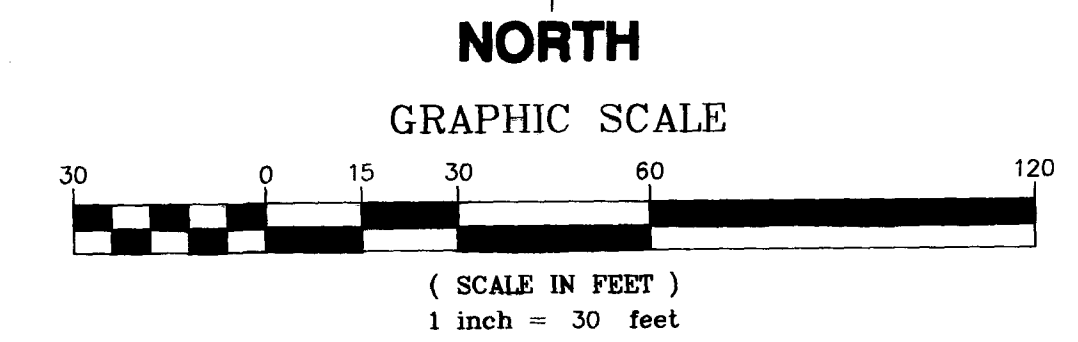
Pursuant to Minnesota Statutes, Section 505.021, Subd. 9, taxes payable in the year 2017 on the land hereinbefore described have been paid. Also, pursuant to Minnesota Statutes, Section 272.12, there are no delinquent taxes and transfer entered this 10th day of August, 2017.

Jonell M. Sawyer  
Jonell M. Sawyer  
Property Tax Administrator  
By [Signature] Deputy

COUNTY RECORDER/REGISTRAR OF TITLES  
COUNTY OF ANOKA, STATE OF MINNESOTA

I hereby certify that this plat of CHAVEZ PRESERVE was filed in the office of the County Recorder/Registrar of Titles for public record on this 10th day of August, 2017, at 2:26 o'clock P.M. and was duly recorded as Document Number 2178079.001.

Jonell M. Sawyer  
Jonell M. Sawyer  
County Recorder/Registrar of Titles  
By [Signature] Deputy



- LEGEND**
- DENOTES IRON MONUMENT FOUND AS LABELED
  - DENOTES 1/2 INCH BY 14 INCH IRON PIPE SET, MARKED RLS NO. 25341
  - ⊕ DENOTES ANOKA COUNTY CAST IRON MONUMENT
  - (647.14 PLAT) DENOTES DIMENSION FROM PLAT OF ARTHUR E. THOM ACRES

For the purposes of this plat, the East line of the Northeast Quarter of Section 31, Township 31, Range 22, Anoka County, Minnesota is assumed to have a bearing of North 0 degrees 31 minutes 08 seconds West.

