

CHERI PARK ADDITION

City of Fridley
County of Anoka
Sec. 23, T30, R24

KNOW ALL PERSONS BY THESE PRESENTS: That the City of Fridley, a Minnesota municipal corporation, under the laws of the State of Minnesota, owner of the following described property:

All of those parts of Lots 8, 9 and 10 in AUDITORS SUBDIVISION NO. 155 lying East of the extension northerly of the East line of TEMPLE TERRACE, PLAT NO. 2; and lying East and South of MURDIX PARK; and lying West of the following described line:

beginning at the Northeast corner of Temple Terrace, Plat 2; thence East along the South line of said Lot 10 a distance of 18 feet to the actual point of beginning of said described line; thence Northeast at an angle to the left of 84°39'40" a distance of 39.98 feet; thence on a tangential curve to the right with a radius of 314.94 feet and a delta angle of 10°52'58" a distance of 59.82 feet; thence Northeast on a tangential curve to the right with a radius of 247.28 feet and a delta angle of 40° a distance of 172.63 feet; thence Northeast on a tangent to last described curve a distance of 130 feet; thence northerly on a tangential curve to the left with a radius of 27.63 feet and a delta angle of 57° a distance of 27.49 feet to a point on the North line of said Lot 10 and 50 feet East of the West line of the Southeast Quarter of the Southeast Quarter of Section 23, Township 30, Range 24; thence North on a line parallel to said West line to the right-of-way line of Interstate Highway No. 694 as the same now exists, and there terminating.

Has caused the same to be surveyed and platted as CHERI PARK ADDITION and does hereby dedicate to the public for public use the public way and the drainage and utility easements as shown on this plat.

In witness whereof said City of Fridley, a Minnesota municipal corporation under the laws of the State of Minnesota, has caused these presents to be signed by its proper officers this 22nd day of August, 2022.

CITY OF FRIDLEY

By Scott J. Lund Mayor

By Melissa Moore Clerk

STATE OF MINNESOTA

COUNTY OF Anoka

This instrument was acknowledged before me this 22nd day of August, 2022 by Scott Lund as Mayor, and Melissa Moore as City Clerk of the City of Fridley, a Minnesota municipal corporation, under the laws of the State of Minnesota, on behalf of the corporation.

(Signature) Roberta S. Collins

(Print Name) Roberta S. Collins

Notary Public, Anoka County, Minnesota

My Commission Expires 11/31/2025

I Daniel W. Obermiller do hereby certify that this plat was prepared by me or under my direct supervision; that I am a duly Licensed Land Surveyor in the State of Minnesota; that this plat is a correct representation of the boundary survey, that all mathematical data and labels are correctly designated on this plat; that all monuments depicted on this plat have been, or will be correctly set within one year; that all water boundaries and wet lands, as defined in Minnesota Statutes, Section 505.01, Subd. 3, as of the date of this certificate are shown and labeled on this plat; and all public ways are shown and labeled on this plat.

Dated this 8th day of August, 2022.

Daniel W. Obermiller

Daniel W. Obermiller, Licensed Land Surveyor
Minnesota License No. 25341

STATE OF MINNESOTA

COUNTY OF Anoka

This instrument was acknowledged before me this 8th day of August, 2022 by Daniel W. Obermiller.

(Signature) Lavae Mack

(Print Name) Lavae Mack

Notary Public, Anoka County, Minnesota

My Commission Expires January 31, 2027

CITY COUNCIL, CITY OF FRIDLEY, MINNESOTA

This plat of CHERI PARK ADDITION was approved and accepted by the City Council of the City of Fridley, Minnesota at a regular meeting thereof held this 22nd day of August, 2022 and said plat is in compliance with the provisions of Minnesota Statutes, Section 505.03, Subd. 2.

City Council, City of Fridley, Minnesota

By Scott J. Lund Mayor

By Melissa Moore Clerk

County Surveyor

I hereby certify that in accordance with Minnesota Statutes, Section 505.021, Subd. 11, this plat has been reviewed and approved this 1st day of September, 2022

David M. Ziegler

David M. Ziegler
Anoka County Surveyor

COUNTY AUDITOR/TREASURER

Pursuant to Minnesota Statutes, Section 505.021, Subd. 9, taxes payable in the year 2022 on the land hereinbefore described have been paid. Also, pursuant to Minnesota Statutes, Section 272.12, there are no delinquent taxes and transfer entered this 1st day of September, 2022

Pamela J. LoBlanc

Property Tax Administrator

By [Signature] Deputy

COUNTY RECORDER/REGISTRAR OF TITLES

COUNTY OF ANOKA, STATE OF MINNESOTA

I hereby certify that this plat of CHERI PARK ADDITION was filed in the office of the County Recorder/Registrar of Titles for public record on this 1st day of sep, 2022 at o'clock 9:37 A.M. and was duly recorded as Document Number 2374738.001

Pamela J. LoBlanc

County Recorder/Registrar of Titles

By [Signature] Deputy

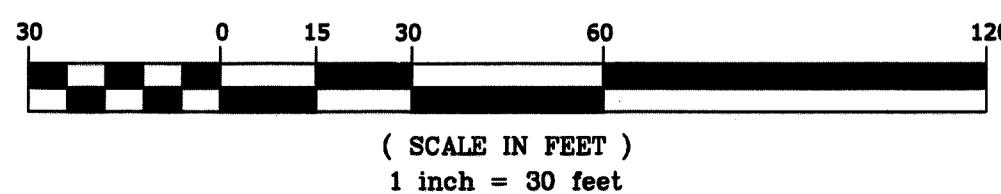
By [Signature] Deputy

E. G. RUD & SONS, INC.
EST. 1877
Professional Land Surveyors

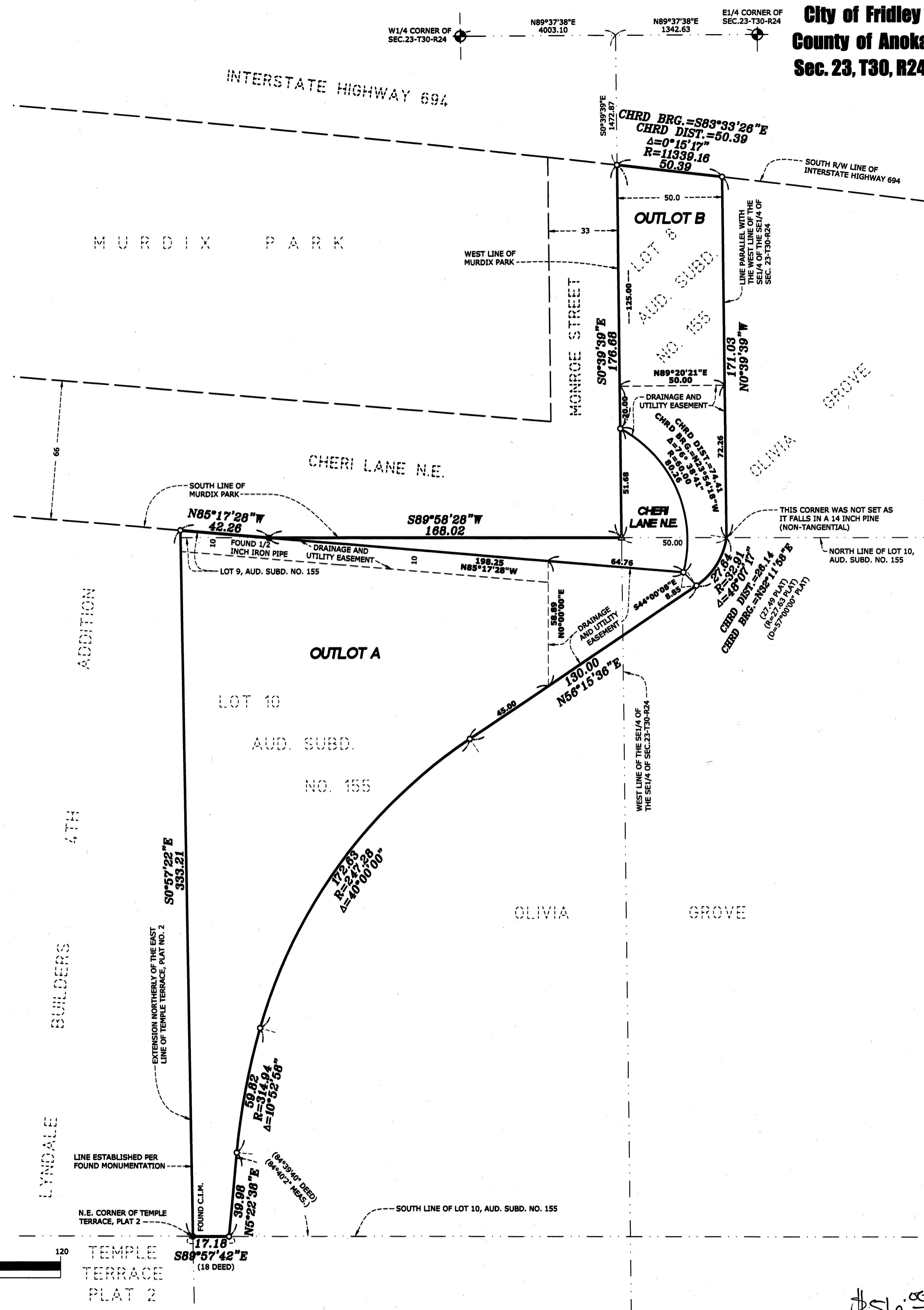
FOR THE PURPOSES OF THIS PLAT THE WEST LINE OF MURDIX PARK IS ASSUMED TO HAVE A BEARING OF SOUTH 00 DEGREES 39 MINUTES 39 SECONDS EAST.

LEGEND

- DENOTES IRON MONUMENT FOUND AS LABELED
- DENOTES 1/2 INCH BY 14 INCH IRON PIPE, MARKED RLS NO. 25341
- △ DENOTES ANOKA COUNTY CAST IRON MONUMENT
- ▲ DENOTES SET PKNAIL



NORTH



\$56.00