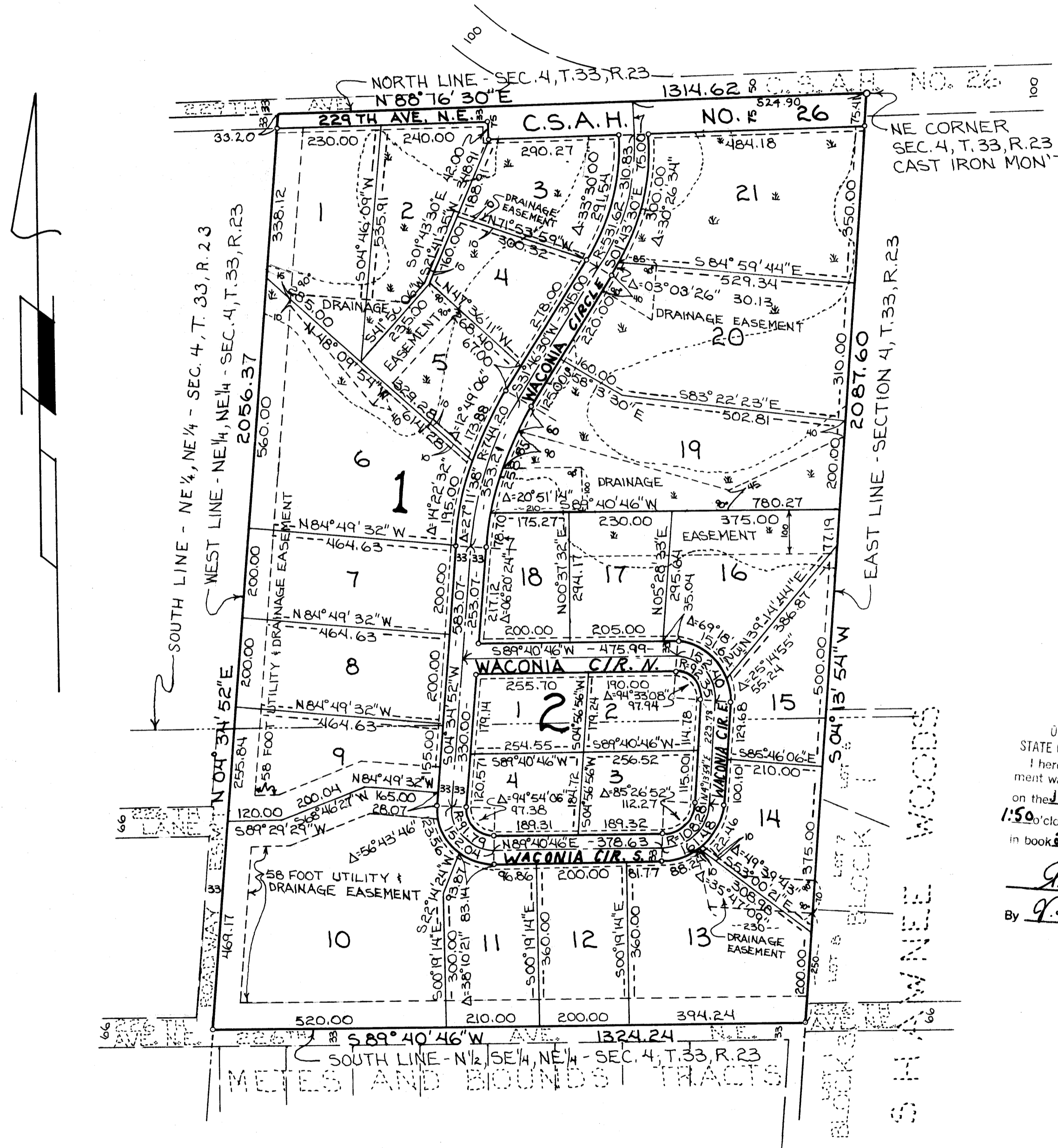


CHEYENNE

CITY OF EAST BETHEL - ANOKA COUNTY, MN.



SCALE: 1 INCH = 200 FEET

ALL BEARINGS ARE ON AN ASSUMED DATUM

o INDICATES IRON MONUMENT CAPPED MINNESOTA REGISTRATION NUMBER 5332

10 FOOT UTILITY EASEMENTS ADJOINING ALL LOT AND RIGHT-OF-WAY LINES AND SHOWN THUS: UNLESS OTHERWISE SHOWN ON THE PLAT

* INDICATES LOW LAND

----- INDICATES EDGE OF LOW LAND

KNOW ALL PERSONS BY THESE PRESENTS: That El Rehbein and Son, Incorporated, a Minnesota corporation, owners and proprietors, and William J. Cooper and Laura M. Cooper, husband and wife, mortgagees of the following described property situated in the County of Anoka, State of Minnesota to wit:

The North One Half of the Southeast Quarter of the Northeast Quarter, and the Northeast Quarter of the Northeast Quarter, all in Section 4, Township 33, Range 23, Anoka County, Minnesota

Have caused the same to be surveyed and platted as CHEYENNE and do hereby donate and dedicate to the public, for public use forever, the street, avenue, highway and easements for drainage and utility purposes as shown on the annexed plat. Also dedicating to the County of Anoka the right to access to Lot 3 and Lot 21, Block 1, as shown on the annexed plat.

In witness whereof El Rehbein and Son, Incorporated, a Minnesota corporation, has caused these presents to be signed by its proper officers and its corporate seal to be affixed this 17th day of May, 1978.

In witness whereof William J. Cooper and Laura M. Cooper, husband and wife, have hereunto set their hands this 16th day of August, 1978.

EL REHBEIN AND SON, INCORPORATED

Elsworth H. Rehbein

Elsworth H. Rehbein, President

William J. Cooper

William J. Cooper

Kenneth E. Rehbein

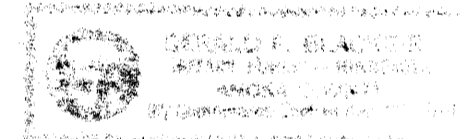
Kenneth E. Rehbein, Vice President

Laura M. Cooper

Laura M. Cooper

STATE OF MINNESOTA
COUNTY OF Anoka

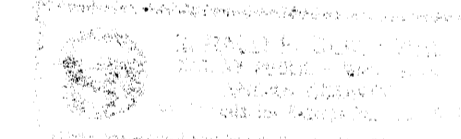
The foregoing instrument was acknowledged before me this 17th day of May, 1978 by Elsworth H. Rehbein, President and Kenneth E. Rehbein, Vice President of El Rehbein and Son, Incorporated, a Minnesota corporation, on behalf of the corporation.



Gerald F. Blackbird
Notary Public, Anoka County, Minnesota
My commission expires Dec. 20, 1979

STATE OF MINNESOTA
COUNTY OF Anoka

The foregoing instrument was acknowledged before me this 16th day of August, 1978 by William J. Cooper and Laura M. Cooper, husband and wife.



Gerald F. Blackbird
Notary Public, Anoka County, Minnesota
My commission expires Dec. 20, 1979

I hereby certify that I have surveyed and platted the property described on the plat as CHEYENNE; that this plat is a correct representation of said survey; that all distances are correctly shown on the plat in feet and hundredths of a foot; that the monuments for the guidance of future surveys have been correctly placed in the ground as shown on the plat; that the outside boundary lines are correctly designated on the plat, and that there are no wet lands or public highways to be designated on the plat other than as shown.

James L. Kurth

James L. Kurth, Land Surveyor
Minnesota Registration No. 5332

STATE OF MINNESOTA
COUNTY OF ANOKA

Above certificate subscribed and sworn to before me this 8th day of August, 1978 by James L. Kurth.

Jeanne M. Kurth

Jeanne M. Kurth, Notary Public, Anoka Co., Minnesota
My commission expires March 13, 1984

Approved by the City Council of the City of East Bethel, Minnesota this 6th day of September, 1978.

CITY COUNCIL OF EAST BETHEL, MINNESOTA

Wayne E. Anderson
Mayor

Shawn Schulte
City Clerk

Checked and approved this 24th day of January, 1979.

Roland W. Anderson
Roland W. Anderson, County Surveyor
Anoka County, Minnesota

518212
OFFICE OF COUNTY RECORDER
STATE OF MINNESOTA, COUNTY OF ANOKA
I hereby certify that the within instrument was filed in this office for record on the JAN 25 1979 A.D., 1979 at 1:50 o'clock P.M., and was duly recorded in book 89 of Plans, page 39
Red J. Pundall
County Recorder
By P. J. Hallman
Deputy

DELINQUENT TAXES
AT TRANSFER ENTERED
Jan 25 1979
Charles R. Linder
Auditor, Anoka County
By J. J. [Signature]