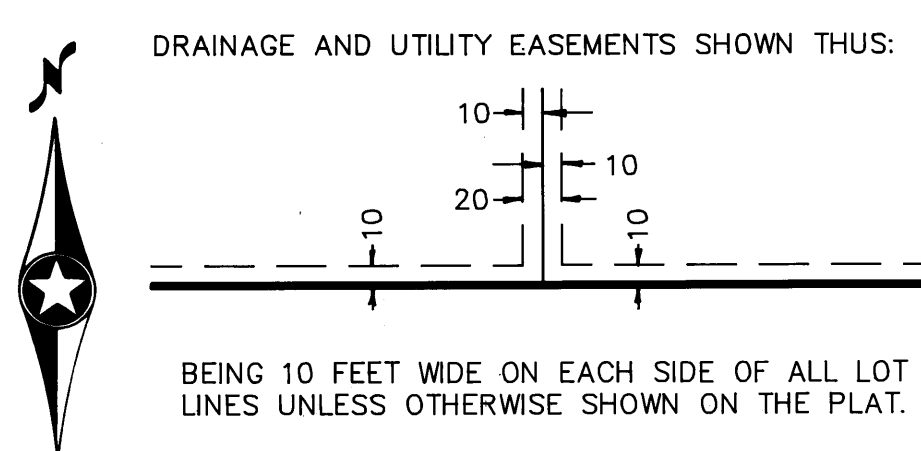
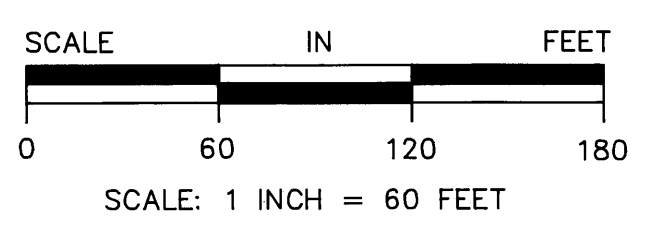
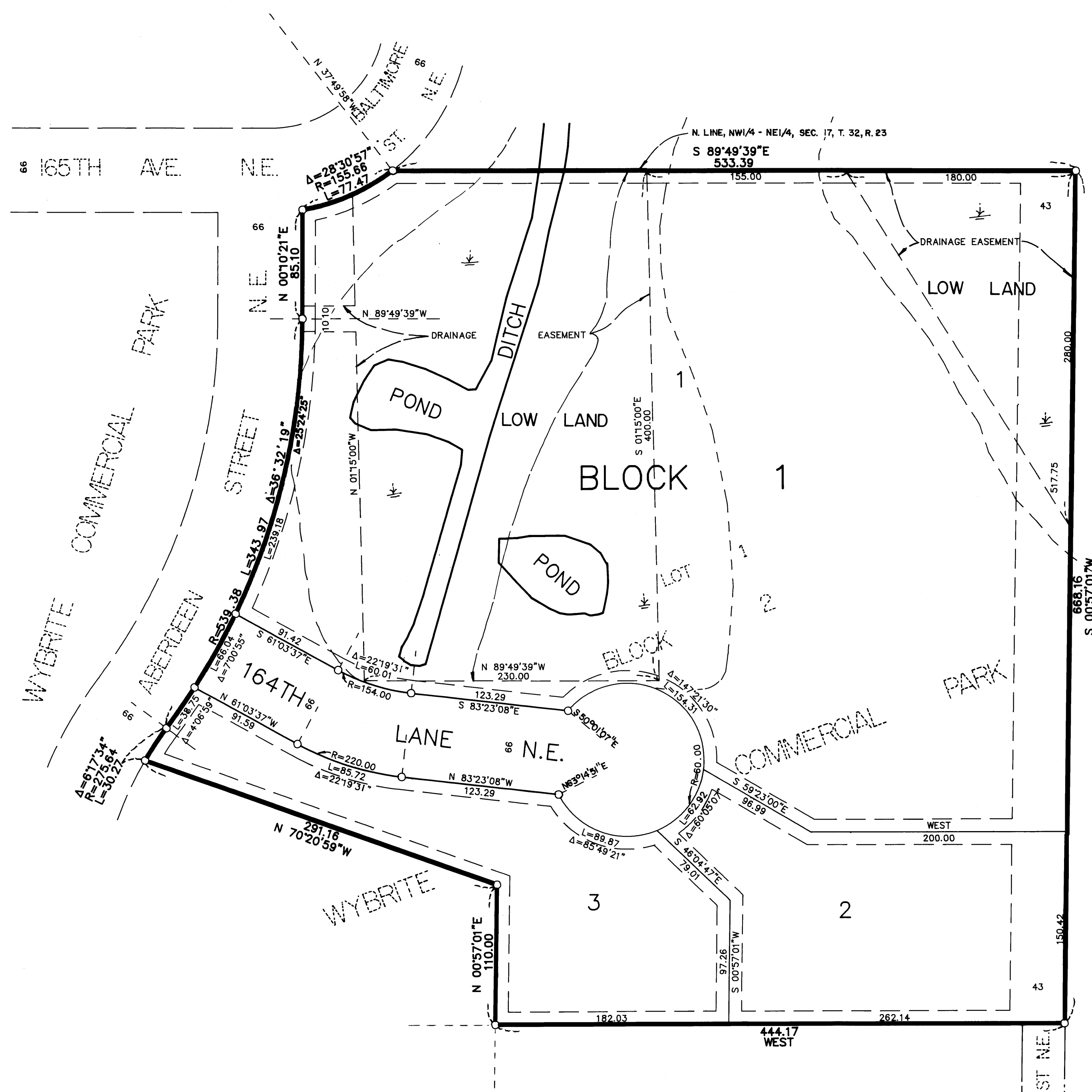


CHRISTENSEN COMMERCIAL PARK

CITY OF HAM LAKE COUNTY OF ANOKA



NOTE: FOR THE PURPOSES OF THIS PLAT, THE MOST SOUTHERLY LINE OF LOT 1, BLOCK 2, WYBRITE COMMERCIAL PARK IS ASSUMED TO HAVE A BEARING OF WEST.

KNOW ALL PERSONS BY THESE PRESENTS: That Daniel L. Christensen and Dixie L. Christensen, husband and wife, owners and proprietors, and First State Bank of Spring Lake Park, a Minnesota corporation, mortgagee of the following described property situated in the County of Anoka, State of Minnesota, to-wit:

Lot 1, Block 2, WYBRITE COMMERCIAL PARK, according to the recorded plat thereof, Anoka County, Minnesota.
Have caused the same to be surveyed and platted as CHRISTENSEN COMMERCIAL PARK and do hereby donate and dedicate to the public for public use forever the Avenue as shown on the plat. Also dedicating the drainage and/or utility easements as shown on the plat. In witness whereof said Daniel L. Christensen and Dixie L. Christensen, have hereunto set their hands this 27 day of July, 1990. Also in witness whereof said First State Bank of Spring Lake Park, has caused these presents to be signed by its proper officers this 27 day of July, 1990.

SIGNED:
Daniel L. Christensen Daniel L. Christensen
Dixie L. Christensen Dixie L. Christensen

FIRST STATE BANK OF SPRING LAKE PARK:
Carl A. Martson, Title Pres.
Mark Stinch, Title Cashier

STATE OF MINNESOTA) The foregoing instrument was acknowledged before me this 27th day of July
COUNTY OF Anoka) 1990, by Daniel L. Christensen and Dixie L. Christensen, husband and wife.

James J. Richards
Notary Public, Anoka County, Minnesota
My Commission expires June 14, 1992

STATE OF MINNESOTA) The foregoing instrument was, acknowledged before me this 27th day of July
COUNTY OF Anoka) 1990, by Carl A. Martson, Pres., and Mark Stinch,
Cashier of First State Bank of Spring Lake Park, a Minnesota corporation, on behalf of the corporation.

James J. Richards
Notary Public, Anoka County, Minnesota
My Commission expires June 14, 1992

I hereby certify that I have surveyed and platted the land described in the dedication on this plat as CHRISTENSEN COMMERCIAL PARK; that the plat is a correct representation of said survey; that all distances are correctly shown on said plat in feet and hundredths of a foot; that the monuments have been correctly placed in the ground as shown; that the outside boundaries are correctly designated on said plat; and that there are no wet lands or public highways to be designated on said plat other than as shown thereon.

Jeffrey N. Caine
Jeffrey N. Caine, Registered Land Surveyor
Minnesota Registration No. 12251

STATE OF MINNESOTA) The surveyors certificate was acknowledged before me a Notary Public, this 27th day of
COUNTY OF ANOKA) July, 1990, by Jeffrey N. Caine, Land Surveyor.

Jeffrey N. Caine
Notary Public, Anoka County, Minnesota
My Commission expires 9-22-92

CITY OF HAM LAKE
We hereby certify that the City Council of the City of Ham Lake, Anoka County, Minnesota, duly accepted and approved the plat of CHRISTENSEN COMMERCIAL PARK at a regular meeting held this 16th day of July, 1990. If applicable, the written comments and recommendations of the Commissioner of Transportation and the County Highway Engineer have been received by the city or the prescribed 30 day period has elapsed without receipt of such comments and recommendations, as provided by Minn. Statutes, Section 505.03, Subd. 2.

By Barilyn Schutt Mayor By Floris A. Nivala Clerk 902278
Checked and approved this 1st day of Aug., 1990.

By Wald D. And
Anoka County Surveyor

NO DELINQUENT TAXES AND TRANSFER ENTRIES
August 1, 1990
Charles J. Jelebrg
Auditor, Anoka County
Jorell M. Sawyer
Deputy

LANDS CERTIFIED THAT THE TAXES PAYABLE IN THE YEAR 1990 ON THE LANDS DESCRIBED WITHIN ARE PAID
Ronald C. Bailey
Anoka County Treasurer
Mary Ann Muller Deputy

OFFICE OF COUNTY RECORDER
STATE OF MINNESOTA, COUNTY OF ANOKA
Aug 1 1990
3:05 P.M.
42 of Plots 32
Ted J. Randall
By Breta Kay Ege

CITY OF HAM LAKE, MINNESOTA
CAINE & ASSOCIATES
LAND SURVEYORS, INC.