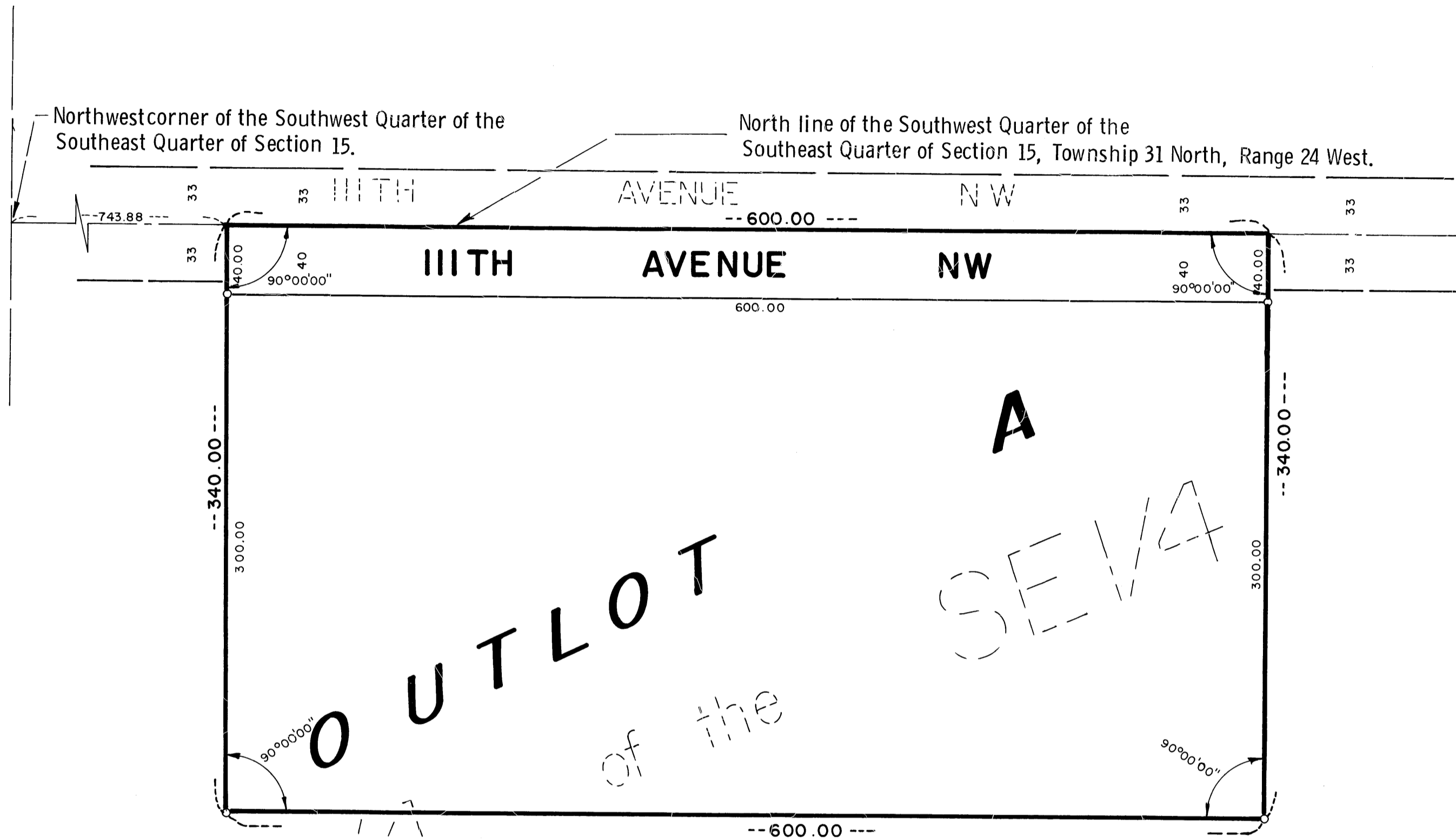


CHURCH OF THE EPIPHANY CEMETERY

EGAN, FIELD & NOWAK, INC.
SURVEYORS

CITY OF COON RAPIDS
COUNTY OF ANOKA

JULY, 1976



Know all men by these presents that The Church of the Epiphany, a Minnesota corporation, owner and proprietor of the following described property situated in the State of Minnesota and County of Anoka to wit: That part of the Southwest Quarter of the Southeast Quarter of Section 15, Township 31 North, Range 24 West of the Fourth Principal Meridian described as follows: Beginning at a point in the North line of said Southwest Quarter of the Southeast Quarter distant 743.88 feet East, as measured along said North line, from the Northwest corner of said Southwest Quarter of the Southeast Quarter; thence continuing East along said North line a distance of 340 feet to the point of beginning, has caused the same to be surveyed and platted as CHURCH OF THE EPIPHANY CEMETERY and does hereby donate and dedicate to the public for public use forever the avenue as shown on the plat. In witness whereof said The Church of the Epiphany has caused these presents to be signed by its proper officers this 17th day of December, A. D. 1976.

THE CHURCH OF THE EPIPHANY
by Bernard A. Reiser vice-president
by Edward P. Hodapp secretary

STATE OF MINNESOTA
COUNTY OF ANOKA The foregoing instrument was acknowledged before me this 14 day of December, 1976, by Bernard A. Reiser, vice-president and Edward P. Hodapp, secretary of The Church of the Epiphany, a Minnesota corporation, on behalf of the corporation.

Vernon R. Plaisance
Vernon R. Plaisance
Notary Public, Anoka County, Minnesota
My commission expires October 12, 1977

I hereby certify that I have surveyed and platted the property described on this plat as CHURCH OF THE EPIPHANY CEMETERY; that this plat is a correct representation of said survey; that all distances are correctly shown on the plat in feet and hundredths of a foot; that all monuments have been correctly placed in the ground as shown; that the outside boundary lines are correctly designated on the plat and that there are no wet lands or public highways to be designated on said plat other than as shown thereon.

Vernon A. Nickols
Vernon A. Nickols, Land Surveyor
Minnesota Registration No. 9053

STATE OF MINNESOTA
COUNTY OF HENNEPIN The foregoing instrument was acknowledged before me this 3rd day of DECEMBER, 1976, by Vernon A. Nickols, Land Surveyor.

Chris Kuntz
CHRIS KUNTZ, Notary Public, Hennepin County, Minnesota
My commission expires March 4, 1982.

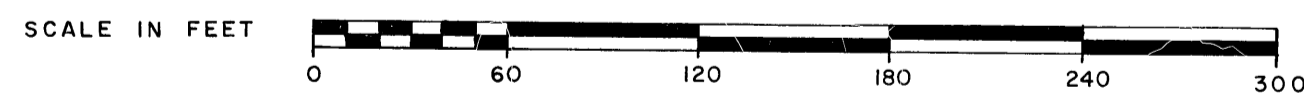
This plat of CHURCH OF THE EPIPHANY CEMETERY was approved and accepted by the City Council of Coon Rapids, Minnesota at a regular meeting thereof held this 5th day of September, A. D. 1976.

CITY COUNCIL OF COON RAPIDS, MINNESOTA
by George J. L. BB mayor
by Betty Bell clerk

This plat of CHURCH OF THE EPIPHANY CEMETERY was approved by the Planning and Zoning Commission of the City of Coon Rapids, Minnesota at a regular meeting thereof held this 19th day of August, A. D. 1976.

PLANNING AND ZONING COMMISSION OF COON RAPIDS, MINNESOTA
by Donald W. Olson chairman
by William J. McLean Jr. clerk

Checked and approved by me this 11th day of January, A. D. 1977.
Roland W. Anderson
Roland W. Anderson, Anoka County Surveyor



o Denotes Iron Monument
SCALE: 1 inch equals 60 feet

"NO DELINQUENT TAXES
& NO TRANSFER ENTERED"

Jan 11 1977
Charles R. Lefebvre
Auditor, Anoka County

J. Olson
Deputy

460388

OFFICE OF COUNTY RECORDER
STATE OF MINNESOTA, COUNTY OF ANOKA
I hereby certify that the within instrument was filed in this office for record on the 11 day of January, A. D. 1977 at 3:05 o'clock P.M., and was duly recorded in book 224 page 4

Ted J. Amundahl
County Recorder
By V. L. Holmberg
Deputy