



OFFICIAL PLAT

BK 6 of CIC, pg 14

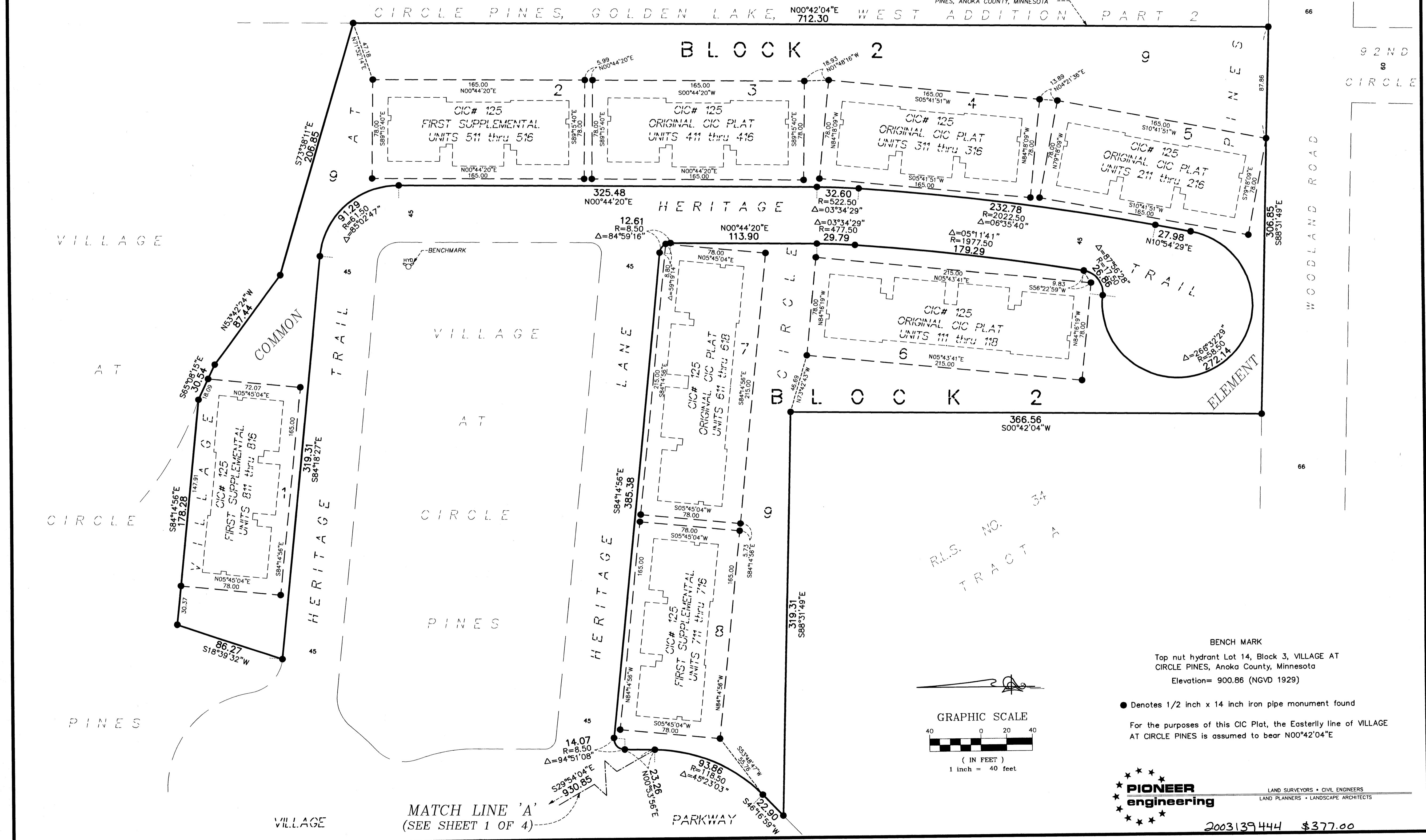
C.R. DOC. NO. 447853

# CIC NUMBER 125

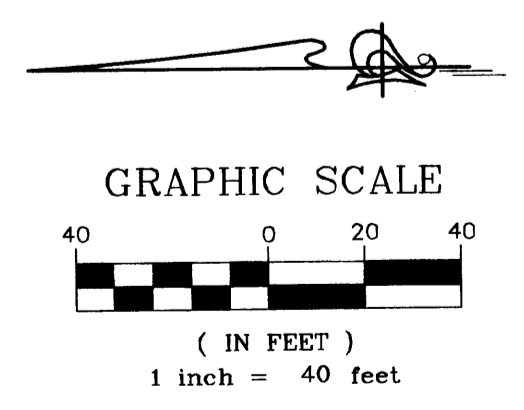
## VILLAGE AT CIRCLE PINES, A CONDOMINIUM

### FIFTH SUPPLEMENTAL CIC PLAT

CITY OF CIRCLE PINES  
COUNTY OF ANOKA  
SEC. 25, TWP. 31, RGE. 23



RLS. NO. 34  
TRACT 7



BENCH MARK  
Top nut hydrant Lot 14, Block 3, VILLAGE AT CIRCLE PINES, Anoka County, Minnesota  
Elevation= 900.86 (NGVD 1929)

● Denotes 1/2 inch x 14 inch iron pipe monument found

For the purposes of this CIC Plat, the Easterly line of VILLAGE AT CIRCLE PINES is assumed to bear N00°42'04"E

**PIONEER engineering**  
LAND SURVEYORS • CIVIL ENGINEERS  
LAND PLANNERS • LANDSCAPE ARCHITECTS

2003139444 \$377.00

OFFICIAL PLAT

BK. 6 of CIC, pg 14

SITE PLAN (AS-BUILT)

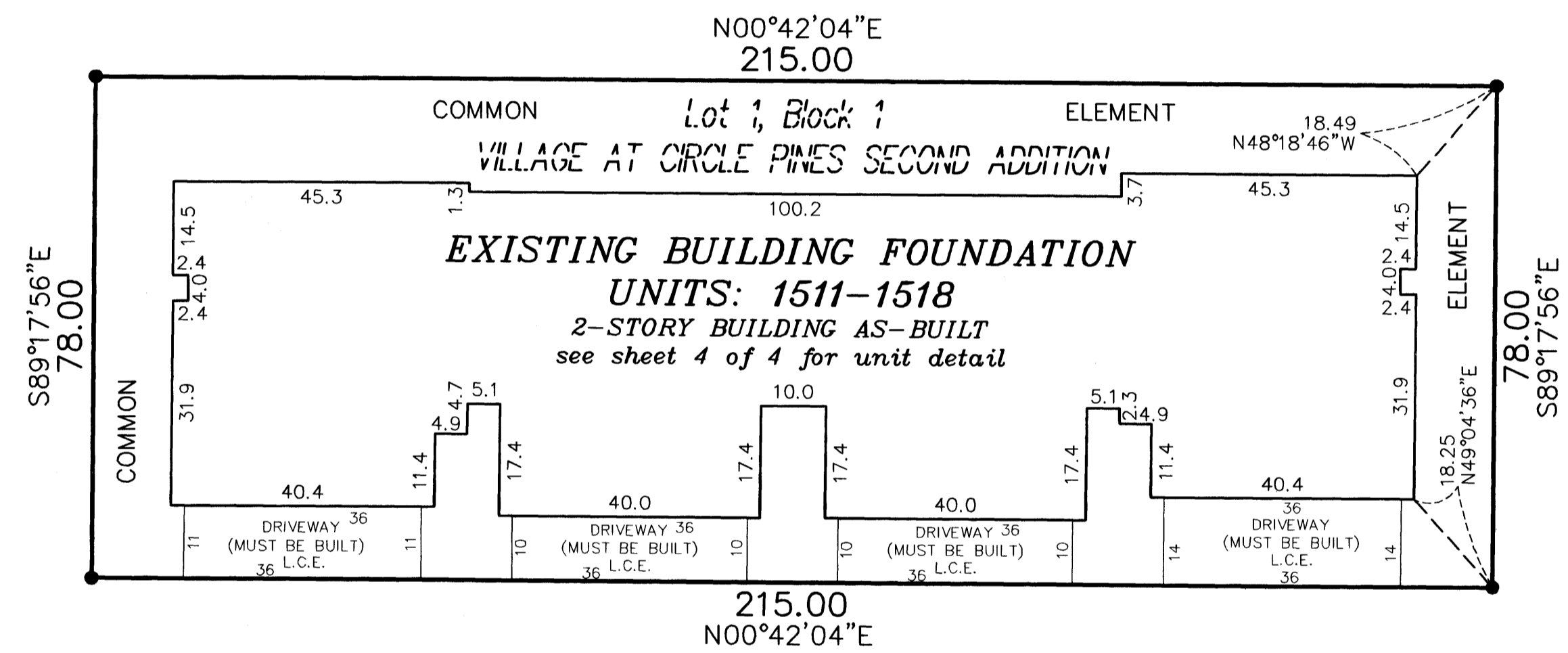
C.R. DOC. NO. 447853

# COMMON INTEREST COMMUNITY NUMBER 125

## VILLAGE AT CIRCLE PINES, A CONDOMINIUM

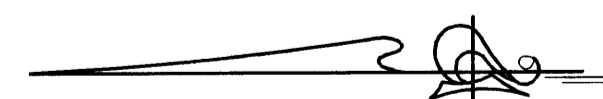
### FIFTH SUPPLEMENTAL CIC PLAT

CITY OF CIRCLE PINES  
COUNTY OF ANOKA  
SEC. 25, TWP. 31, RGE. 23

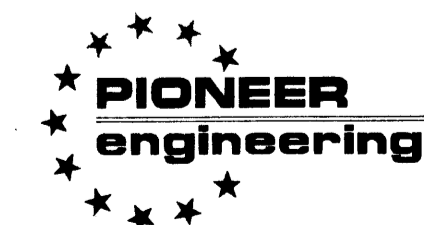


● Denotes Monument Found

For the purposes of this CIC Plat, the Easterly line of VILLAGE AT CIRCLE PINES is assumed to bear N00°42'04"E



( IN FEET )  
1 inch = 20 feet



LAND SURVEYORS • CIVIL ENGINEERS  
LAND PLANNERS • LANDSCAPE ARCHITECTS

2003139444 \$377.00

UNIT DETAIL  
(AS-BUILT)

OFFICIAL PLAT

# COMMON INTEREST COMMUNITY NUMBER 125

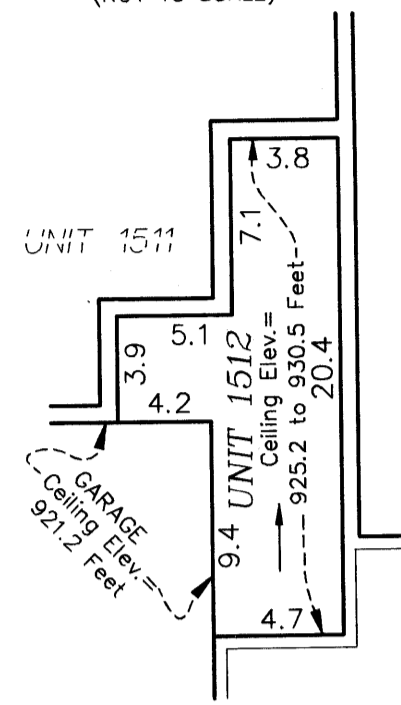
## VILLAGE AT CIRCLE PINES, A CONDOMINIUM

### FIFTH SUPPLEMENTAL CIC PLAT

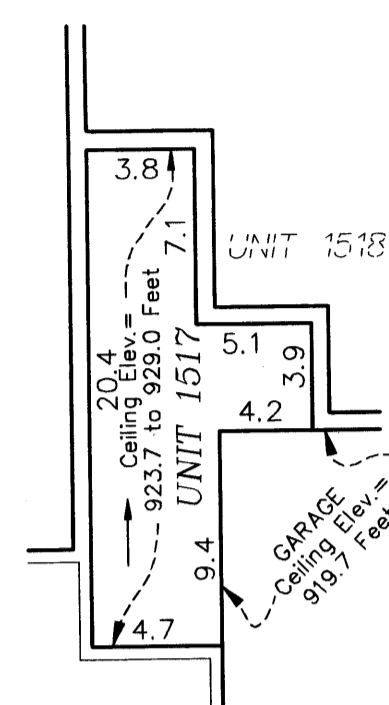
C.R. DOC. NO. 447853

CITY OF CIRCLE PINES  
COUNTY OF ANOKA  
SEC. 25, TWP. 31, RGE. 23

Detail A:  
(NOT TO SCALE)



Detail B:  
(NOT TO SCALE)



#### Lower Level Elevations

Units 1511 and 1512 garage floor elevation = 911.5 feet  
Units 1511 and 1512 garage ceiling elevation = 921.2 feet  
Units 1511 and 1512 lower level floor elevation = 912.2 feet  
Unit 1511 lower level ceiling elevation = 921.2 feet  
Unit 1512 lower level ceiling elevation varies from 925.2 feet to 934.8 feet  
Units 1513, 1514, 1515, and 1516 garage floor elevation = 910.8 feet  
Units 1513, 1514, 1515, and 1516 garage ceiling elevation = 920.5 feet  
Units 1513, 1514, 1515, and 1516 lower level floor elevation = 911.5 feet  
Units 1513, 1514, 1515, and 1516 lower level ceiling elevation varies from 920.5 feet to 929.8 feet  
Units 1517 and 1518 garage floor elevation = 910.0 feet  
Units 1517 and 1518 garage ceiling elevation = 919.7 feet  
Units 1517 and 1518 lower level floor elevation = 910.7 feet  
Unit 1517 lower level ceiling elevation varies from 923.7 feet to 933.3 feet  
Unit 1518 lower level ceiling elevation = 919.7 feet

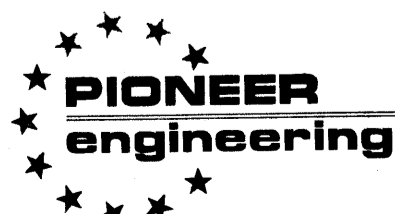
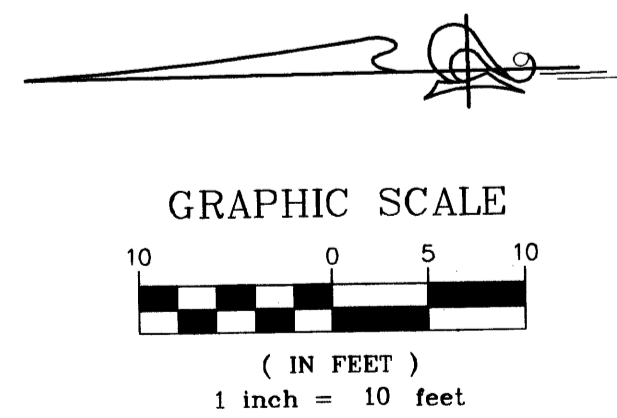
#### Upper Level Elevations

Unit 1512 upper level floor elevation = 922.4 feet  
Unit 1512 upper level ceiling elevation varies from 925.2 feet to 934.8 feet  
Units 1513, 1514, 1515, and 1516 upper level floor elevation = 921.7 feet  
Units 1513, 1514, 1515, and 1516 upper level ceiling elevation = 929.8 feet  
Unit 1517 upper level floor elevation = 920.9 feet  
Unit 1517 upper level ceiling elevation varies from 923.7 feet to 933.3 feet

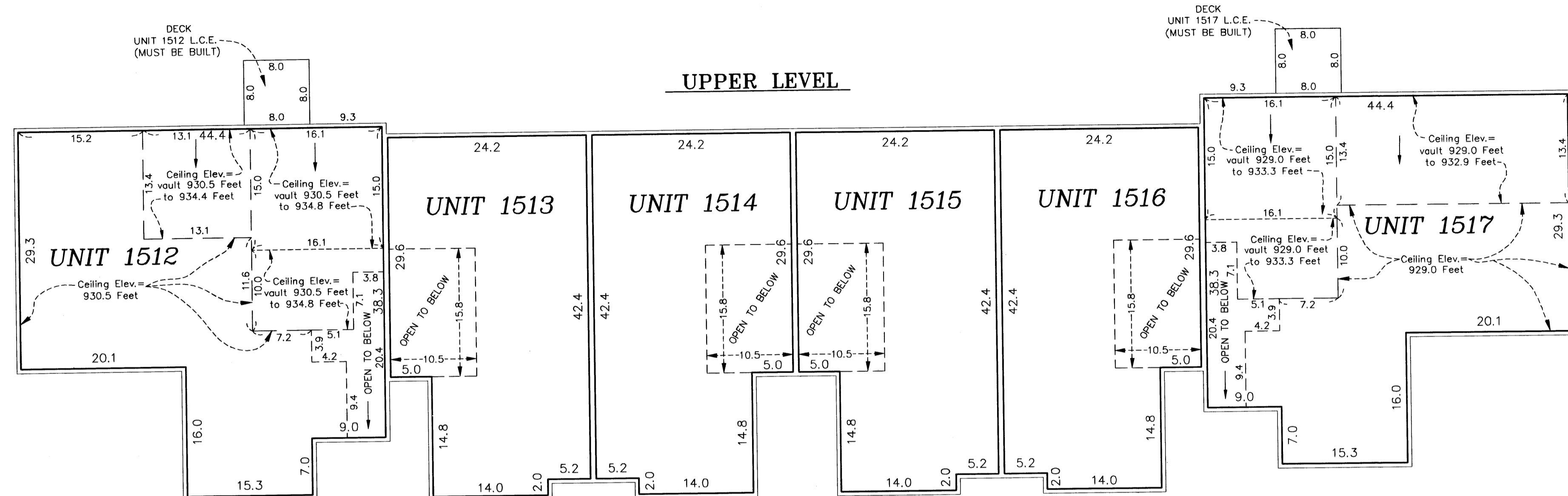
Elevations are referred to a benchmark as noted on the site plan on Sheet 1 of 4 Sheets and are shown in feet and tenths of a foot.

L.C.E. = Limited Common Element

Interior dimensions shown are measured to the unfinished surface of the walls, floors and ceiling.



#### UPPER LEVEL



#### LOWER LEVEL

